



Human Nature Collection

Interface®

Human Nature™ Collection

It's human nature to be creative. As designers we know that when we follow nature's example, designing spaces that ignite our senses through light, color, texture and detail, we also spark the creative spirit in each of us.

Human Nature Collection was designed as a beautiful foundation for those spaces, made up of five different textures in 25cm x 1m skinny planks. Borrowing from natural elements, HN810™, HN850™ and HN840™ placed in sequence blend seamlessly in an organic movement that shows no hint of the corners or edges of the tile. HN820™ and HN830™ extend the range from very low profile to wildly-full and neutral to colorful.

Like everything in the natural world, transitions are varied. The skinny plank format lends itself to fluid transitions with its graceful, elongated dimensions. More dynamic connections are made when mixing hues and textures with the bold geometry of the tile.

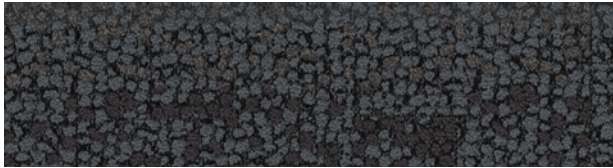
Of course, Human Nature Collection is made of up to 81% total recycled content, including 100% recycled nylon made in part from reclaimed fishing nets. And when its useful life is through, it can be recycled through Interface's ReEntry® 2.0 recycling process.

Your turn. Be creative – it's in your nature.

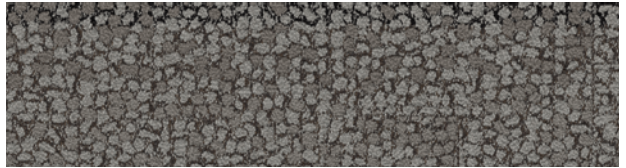




HN840™ Colorline



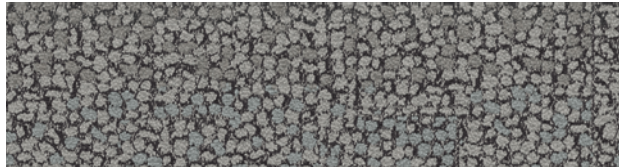
104221 FLINT



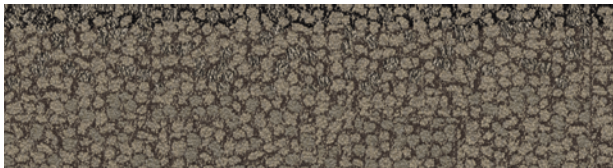
104222 NICKEL



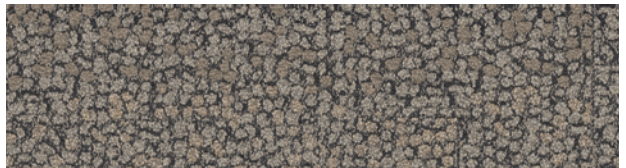
104223 SLATE



104224 LIMESTONE



104225 PUMICE



104226 SHALE



104227 EARTH



104228 TRAVERTINE

Specifications **i2**

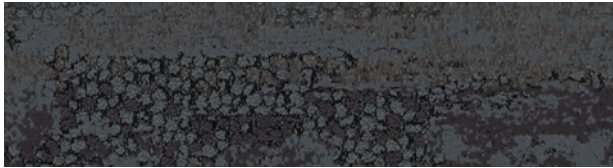
| | |
|-------------------------|------------------------------------|
| Modular, 25cm x 1m | 127620AK0H |
| Backing System | GlasBac®RE Tile |
| Yarn Manufacturer | Aquafil |
| Yarn System | 100% Recycled Content Type 6 Nylon |
| Color System | 100% Solution Dyed |
| Construction | Tufted Pattern Loop |
| Preservative Protection | Intersept® |
| Soil/Stain Protection | Protekt ² ® |
| Pile Thickness | 0.202 in., 5.1 mm |
| Pile Density | 5,168 |
| Total Recycled Content | 92% |
| Indoor Air Quality | CRI Green Label Plus #GLP0820 |



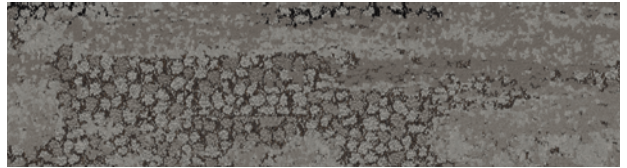


PRODUCT HN850 COLOR 104207 SLATE INSTALLED ASHLAR

HN850™ Colorline



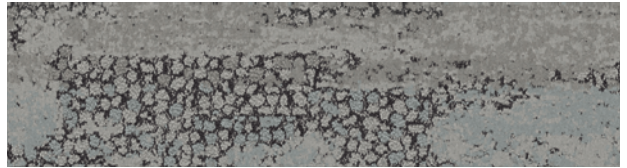
104205 FLINT



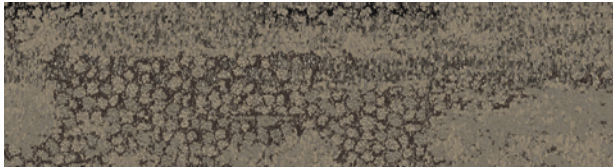
104206 NICKEL



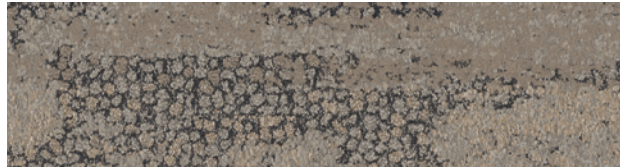
104207 SLATE



104208 LIMESTONE



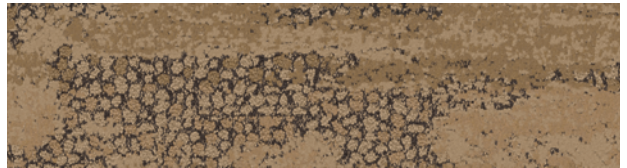
104209 PUMICE



104210 SHALE



104211 EARTH



104212 TRAVERTINE

Specifications **i2**

| | |
|-------------------------|------------------------------------|
| Modular, 25cm x 1m | 127600AK0H |
| Backing System | GlasBac®RE Tile |
| Yarn Manufacturer | Aquafil |
| Yarn System | 100% Recycled Content Type 6 Nylon |
| Color System | 100% Solution Dyed |
| Construction | Tufted Sheared |
| Preservative Protection | Intersept® |
| Soil/Stain Protection | Protekt2® |
| Pile Thickness | 0.194 in., 4.9 mm |
| Pile Density | 5,938 |
| Total Recycled Content | 92% |
| Indoor Air Quality | CR1 Green Label Plus #GLP0820 |



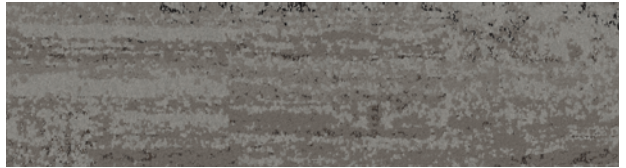


PRODUCT HN810 COLOR 104216 LIMESTONE INSTALLED HERRINGBONE

HN810™ Colorline



104213 FLINT



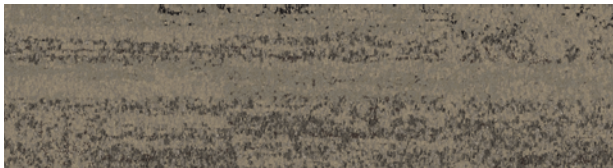
104214 NICKEL



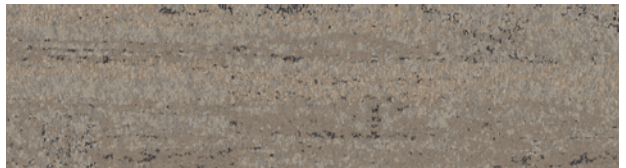
104215 SLATE



104216 LIMESTONE



104217 PUMICE



104218 SHALE



104219 EARTH



104220 TRAVERTINE

Specifications **i2**

| | |
|-------------------------|------------------------------------|
| Modular, 25cm x 1m | 127610AK0H |
| Backing System | GlasBac®RE Tile |
| Yarn Manufacturer | Aquafil |
| Yarn System | 100% Recycled Content Type 6 Nylon |
| Color System | 100% Solution Dyed |
| Construction | Tufted Sheared |
| Preservative Protection | Intersept® |
| Soil/Stain Protection | Protekt2® |
| Pile Thickness | 0.212 in., 5.4 mm |
| Pile Density | 5,774 |
| Total Recycled Content | 92% |
| Indoor Air Quality | CR1 Green Label Plus #GLP0820 |

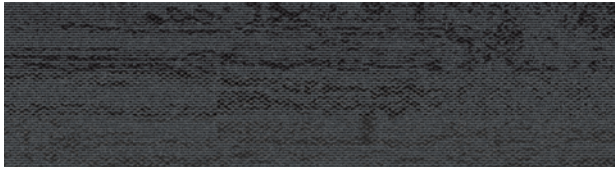


ASHLAR

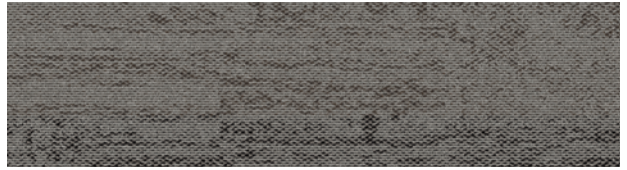
HERRINGBONE



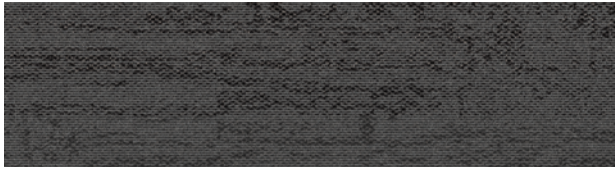
HN820™ Colorline



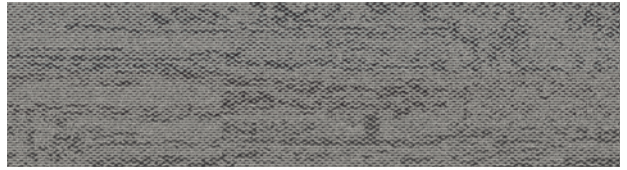
104229 FLINT



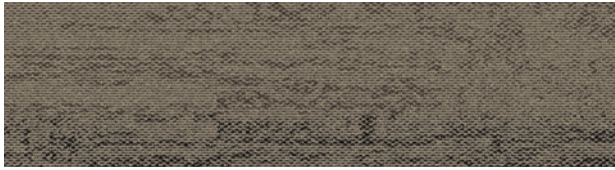
104230 NICKEL



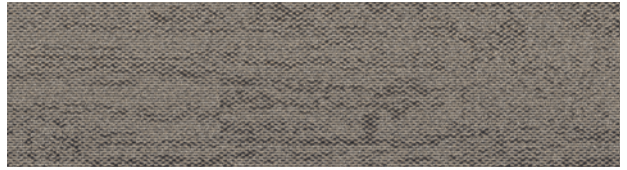
104231 SLATE



104232 LIMESTONE



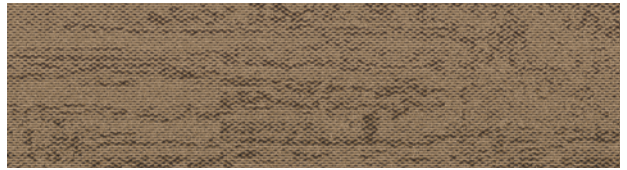
104233 PUMICE



104234 SHALE



104235 EARTH



104236 TRAVERTINE

Specifications

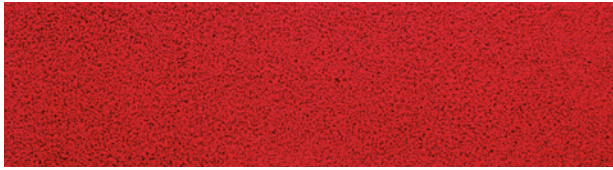
| | |
|-------------------------|------------------------------------|
| Modular, 25cm x 1m | 124980AK0H |
| Backing System | GlasBac®RE Tile |
| Yarn Manufacturer | Aquafil |
| Yarn System | 100% Recycled Content Type 6 Nylon |
| Color System | 100% Solution Dyed |
| Construction | Tufted Cut & Loop |
| Preservative Protection | Intersept® |
| Soil/Stain Protection | Protekt2® |
| Pile Thickness | 0.124 in., 3.1 mm |
| Pile Density | 6,387 |
| Total Recycled Content | 92% |
| Indoor Air Quality | CR1 Green Label Plus #GLP0820 |





PRODUCT HN830 COLOR 104242 KIWI INSTALLED ASHLAR

HN830™ Colorline



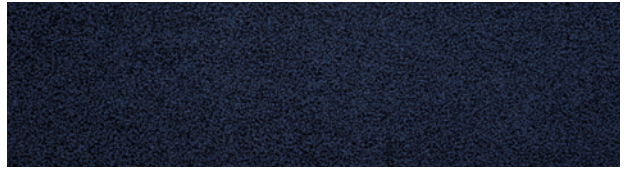
104237 PERSIMMON



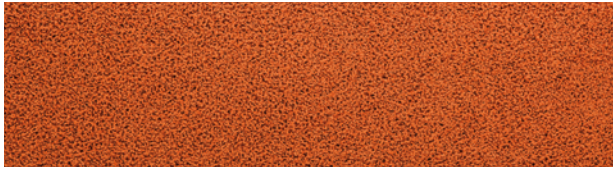
104238 MAIZE



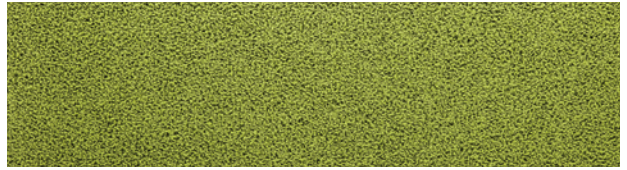
104239 BLACK



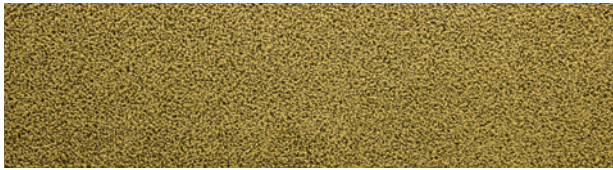
104240 COBALT



104241 CLEMENTINE



104242 KIWI



104243 PISTACHIO



104244 BONE

Specifications

| | |
|-------------------------|------------------------------------|
| Modular, 25cm x 1m | 126020AK00 |
| Backing System | GlasBac® Tile |
| Yarn Manufacturer | Aquafil |
| Yarn System | 100% Recycled Content Type 6 Nylon |
| Color System | 100% Solution Dyed |
| Construction | Tufted Cut Pile |
| Preservative Protection | Intersept® |
| Soil/Stain Protection | Protekt2® |
| Pile Thickness | 0.309 in., 7.8 mm |
| Pile Density | 4,893 |
| Total Recycled Content | 79% |
| Indoor Air Quality | CRI Green Label Plus #GLP0820 |



Why Our Modular Flooring?



Modular Flooring

Performance and flexibility. Interface's standard backing systems set the industry standard for modular performance. Tiles stay on the floor with no upcurl, no tapping and no rippling effect, yet are easy to selectively replace. Our modular carpet is easier to handle than bulky roll carpet and produces an average of just 3-4% waste compared to roll carpet's average of 14%. And it installs seamlessly with our LVT, no transition strips needed.



Carbon Neutral Floors™

Create a climate fit for life. All Interface flooring sold globally is third party verified carbon neutral. We've taken a holistic approach to achieve carbon neutrality, first through reducing the carbon footprint of our products and then using carbon offsets for the remainder, including the emissions from raw materials, our manufacturing processes and product use to end of life.



TacTiles®

No glue installation. Our revolutionary TacTiles installation system eliminates the need for glue, adhering tiles securely together to form a floor that "floats" for greater flexibility, easier replacement and long-term performance. The result? Less mess, less waste and virtually no VOCs, not to mention an environmental footprint that is over 90% lower than that of traditional glue adhesives.

Samples

Order samples at www.interface.com. You'll receive email order confirmations, 24/7 access to order status and more. Not near a computer? You can also request samples by calling one of the numbers below.

| | |
|---------------------------------|------------------------------------|
| United States 1.877.605.1500 | Canada 1.866.398.3192 |
| Brazil + 55 11 2196 0900 | Latin America + 52 55 6395 5100 |

www.interface.com

Register at www.interface.com to:

- Browse products and order samples
- View carpet in a variety of room scenes
- Browse floor designs, change colors, view as a grid or in a room, download and share
- Use our LEED Calculator
- Check order status and inventory availability
- Sign up to get the latest information on Interface products and news

InterCircle™ Sample Return

Help us close the loop on the carpet sampling process. Through our InterCircle Sample Return program, sample materials stay out of the landfill and are re-used as samples until it is time to recycle them into new carpet. By reducing sample production material and diverting old materials from the landfill, we can reduce our overall environmental footprint.

Call 1.877.605.1500 (U.S.) or 1.866.398.3192 (Canada) to order a sample return bag with a prepaid return label.

Third Party Certification



Bureau Veritas – All Interface flooring sold globally is third party verified carbon neutral.



Environmental Product Declaration (EPD) – A statement of product ingredients and environmental impacts over the entire life cycle of a product. A comprehensive life cycle assessment (LCA) is performed to ISO standards to develop an EPD, after which both the EPD and LCA must be third party verified.



Sustainable Assessment for Carpet – The only carpet sustainability standard in North America that evaluates the environmental impact of carpet for its entire lifecycle.



CRI Green Label Plus – An independent testing program that identifies carpet and adhesives with very low emissions of VOCs to help improve indoor air quality.



Intersept®

Mold protection. Our proprietary preservative, Intersept, protects our modular carpet against mold growth and odor-causing bacteria—guaranteed. Intersept treated carpet, with proper maintenance, shows no mold or bacterial growth when tested per the ASTM E2471 Standard Test Method. Intersept is EPA approved for safe use in carpet, water insoluble and contains no halogens, heavy metals, phenols or formaldehyde.



ReEntry®

Recyclable is now a reality. Through our ReEntry program and partnerships with our fiber suppliers and recycling centers throughout North America, separated Type 6 and 6,6 nylon are recycled into new 6 and 6,6 nylon while separated GlasBac®, GlasBacRE and similar competitor backings are recycled into new GlasBacRE non-virgin PVC backing using our Cool Blue™ technology. The result? Products with up to 89% total recycled content, including as much as 27% post-consumer content.



Sustainable Choice

Environmental responsibility. More than 95% of Interface products manufactured in the Americas carry the GreenCircle Certified Environmental Facts label, which has verified that standard Interface products are manufactured using 99% renewable energy and offer a minimum of 66% and 80% total recycled content when backed with GlasBac and GlasBacRE backing respectively.

Transparency and certified sustainability leadership come standard on all Interface products, including published ingredients in HPDs (Health Product Declarations) or Declare Labels. In addition, more than 99% of our products globally have a published EPD (Environmental Product Declaration), which evaluates consistent factors based on full life cycle assessment (LCA). And, all Interface products with GlasBacRE backing are certified to the Platinum level of the NSF/ANSI 140 Sustainable Assessment for Carpet. GlasBac backed products meet the Gold level. NSF/ANSI 140 certified products contribute toward a USGBC or CaGBC LEED credit.



All product specifications reflect averages derived from product sample testing, are subject to normal manufacturing and testing tolerances and inherent pattern variances, and may be changed without notice. For more information about these and other important attributes of the product(s) described herein, including recycled content and product warranty information, please see www.interface.com/disclaimer.

Printed on 50% post consumer waste (PCW) fiber manufactured using wind power.

We have tried our very best to accurately represent product colors. However, due to the nature of printed materials, color of actual products may vary slightly. Please request a sample to see actual product color.

www.interface.com

United States Headquarters

1503 Orchard Hill Road
LaGrange, GA 30240
1.800.336.0225 ext.56511

Canadian Headquarters

233 Lahr Drive
Belleville, ON K8N 5S2
1.800.267.2149 ext.52128

Brazilian Headquarters

Rua Surubim, 577 - Conjuntos
73/74 7º Andar
04571-050 - São Paulo - SP
+ 55 11 2196 0900

Latin American Headquarters

Montes Urales # 415 Piso 6
Col. Lomas de Chapultepec
México City, D.F. 11000
Mexico
+ 52 55 6395 5100

10/2018



Climate change is undeniable. And reversible. Our mission is to prove it. **Join the #ClimateTakeBack and help create a climate fit for life.**