

The image shows a modern office space. In the foreground, a light-colored wooden desk is partially visible, with a silver computer monitor, a glass bottle of water, and some papers on it. The floor is covered with a large, patterned carpet in shades of brown, orange, and grey. In the background, there is a whiteboard and a corkboard with various papers pinned to it. The overall aesthetic is clean and professional.

**Interface®**

TOP 3  
COLOUR  
TRENDS IN  
WORKPLACE  
DESIGN 2020

---



---

# A SOURCEBOOK OF INSPIRATION, SELECTED FOR WORKPLACES

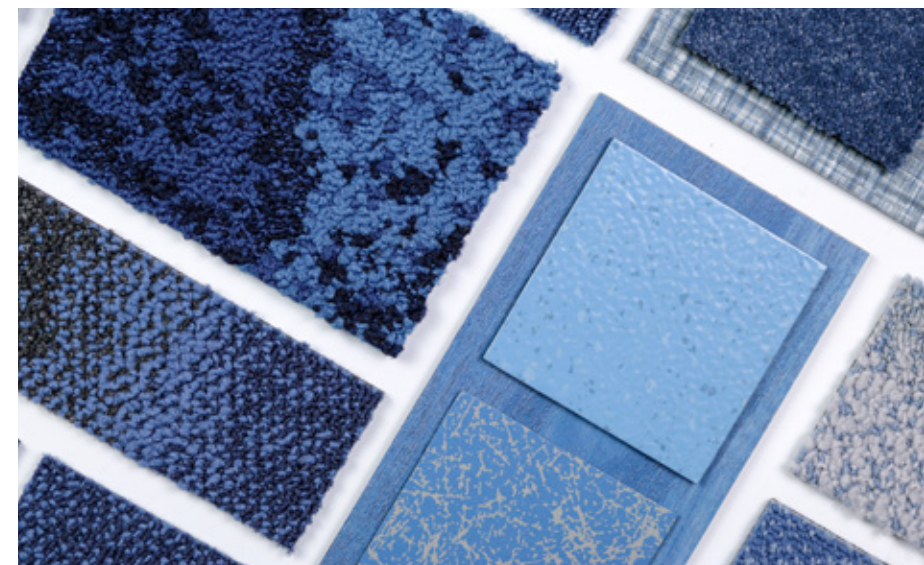
---

You want to create a workplace environment that will help people to work in a way that best suits their needs. Which is why the choice of colour is so important.

With its natural ability to alter our behaviour and mood, colour plays a vital role in workplace design. Creating spaces that are conducive to concentration and focus, along with environments that feel uplifting, sociable and inclusive.

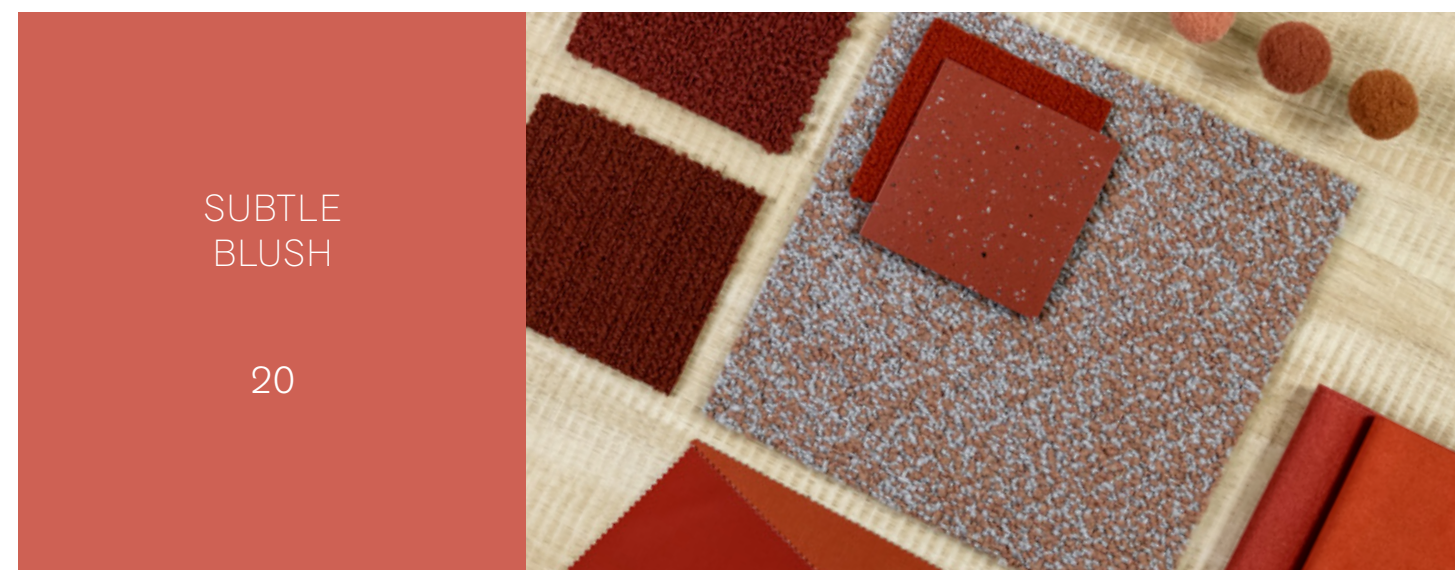
To inspire your creative vision, we've put together a series of palettes to highlight the top 3 colours influencing workplace design. Exploring the type of mood and experiences they evoke, and the kind of behaviour and activity they support.

Whatever the size and scale of your workplace, our visual sourcebook will help you to select the colours, patterns and textures that are guaranteed to set the right tone.



INTO  
THE BLUE

04



SUBTLE  
BLUSH

20



GOLDEN  
OCHRE

34





Human Nature - HN830  
608004 *Cobalt*  
Drawn Lines  
A00907 *Onyx*

---

# INTO THE BLUE

---

Taking a deep dive into the naturally soothing shades of indigo, denim and lavender blue, our palette spans dark, rich mid-tones and pale hues and provides a reassuring and comforting backdrop to the workplace.

Rich and intense tones emulate the velvet inkiness and intensity of the deep pacific ocean, while crisp, light and bright shades of powder blue remind us of expansive clear blue skies and the wonder of cloud formations.

Frosted lilac, violet and blueberry tinged with lavender, signal a significant shift from the true blues that have dominated in recent seasons. Providing a new and perhaps unexpected shade to see in the workplace.





## A 5x5 grid of 25 images related to the color blue. The images include: a night sky with a meteor, blue foliage, various blue fabric textures, abstract blue and yellow shapes, a blue ocean horizon, a close-up of a blue rock, a blue mosaic tile pattern, a blue geometric structure, a blue sky with clouds, a blue textured surface, a blue interior with a wooden shelf, a blue abstract pattern, a blue sky with a white contrail, a blue textured surface, a blue abstract pattern, a blue interior with a wooden shelf, a blue abstract pattern, a blue sky with a white contrail, a blue textured surface, a blue abstract pattern, a blue interior with a wooden shelf, a blue abstract pattern, a blue sky with a white contrail, a blue textured surface, a blue abstract pattern, a blue interior with a wooden shelf, a blue abstract pattern.

Perhaps it's because blue is a colour that has so many positive associations in the natural world; reminding us of bright, expansive blue skies and warm, calm seas. It is also said to imbue a sense of peace and tranquillity. Indigo in particular is often referred to as the 'third eye', inspiring contemplation, mindfulness, serenity and calm.

Blending comfortably into this palette are subtle, chalky shades of purple, mixed with blue and grey for intensity and depth. These paler hues represent the transition from Ultra Violet, which was Pantone's colour of the year back in 2018, towards paler, cooler, more liveable shades.

INTO THE BLUE | 07



---

# INTERIORS INSPIRATION

---

Indigo, denim and lavender were prevalent in Milan, with many of the most notable designers and leading furniture brands sharing collections in these shades.

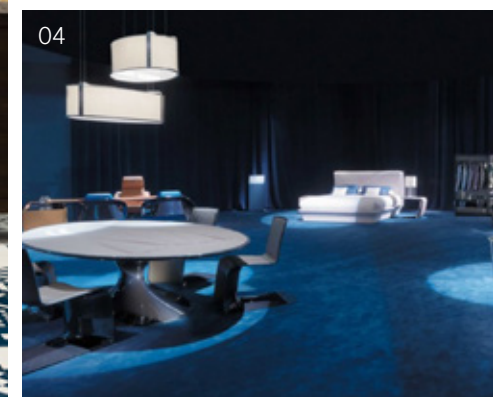
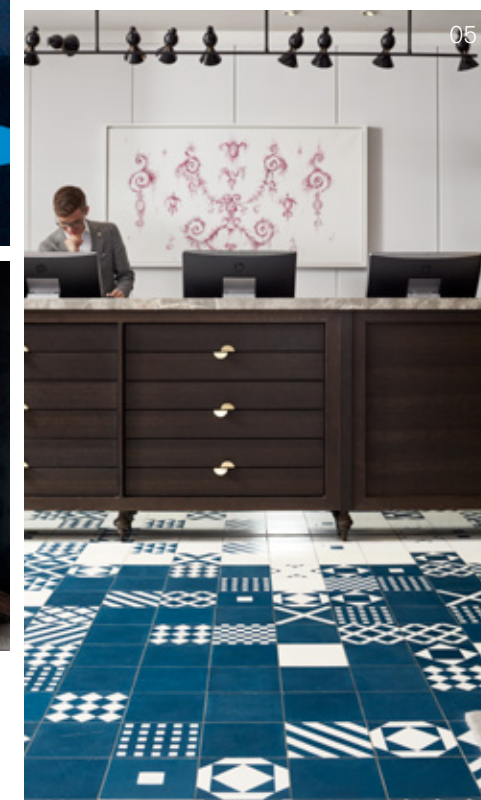
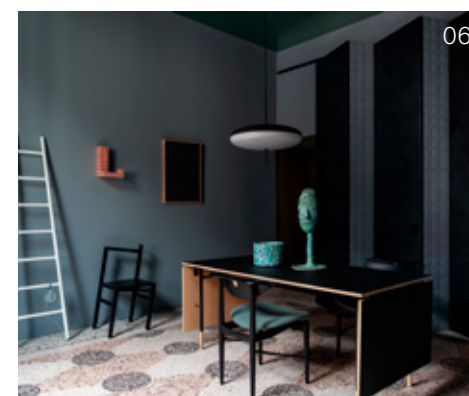
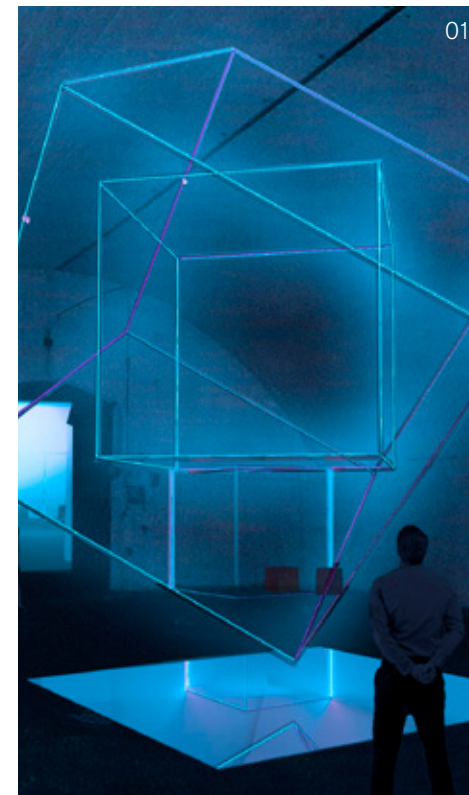
Celebrating the beauty of denim in all its glory, the Indigo Experience Lab by Moooi, in partnership with ECCO leather, Shin-Denim and Denim City, invited visitors to take part in interactive workshops and get acquainted with some of the new materials and methods the brand has been experimenting with.

The apartment installation named 'Perfect Darkness' was purposefully designed as the antithesis of the "cold" showroom, with every room in the apartment decorated in rich and intense shades.

As our affection for this colour strengthens, we're beginning to see these hues filter into our homes.

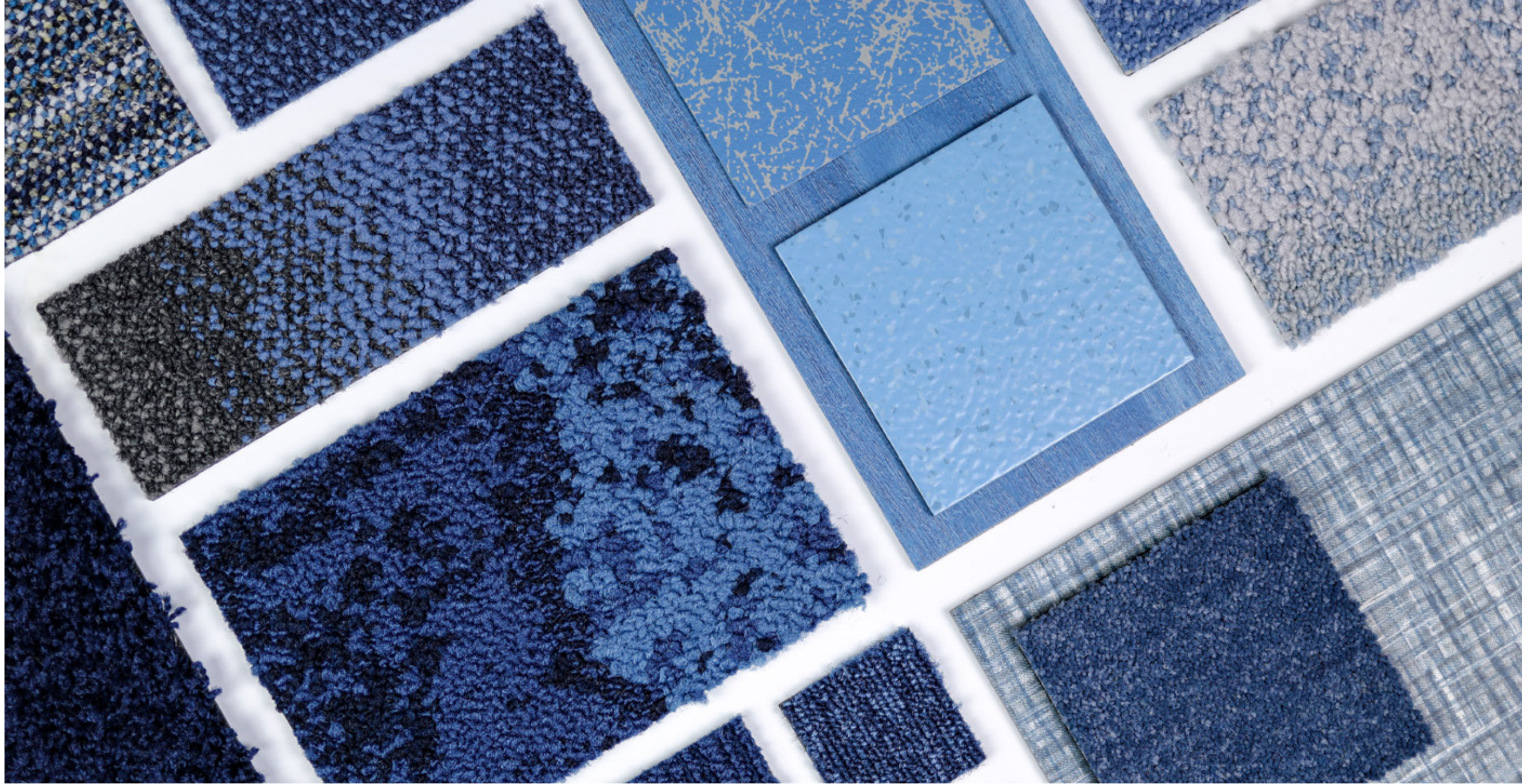
Ripples of blue have become a recurring theme in bathroom design, as watery and inky-tones create deeply relaxing and luxurious spaces.

Bolder blues are also adding character to kitchen design, with many designers opting for variations in tone, with irregular finishes or a mix of materials in the same shade. Flashes of bright white and metallics shine particularly well when backed by blue.



SEE PAGE 51 FOR PHOTOGRAPHY REFERENCE DETAILS





---

## COMBINATIONS

---

Our colour palette reflects the differences between night and day, emulating the feelings and mood they create. From crisp and light tones that awaken our minds, to warm inky-tones which naturally aid concentration.





01



02

01  
Composure  
4169060 *Sailing*

02  
Net Effect  
B601 - 332906 *Pacific*  
B602 - 332914 *Pacific*  
B603 - 332922 *Pacific*

03  
Heuga 530 II  
4288017 *Dove Blue*  
Level Set - Natural Stones  
A00103 *Cool Impala Marble*



03

Brighter, lighter shades of blue pave the way for fresh thinking by creating an uplifting workplace that helps us to think calmly and clearly.





01

Swathes of deep, intense colour set the scene for more focused concentration and discussion.

A heavy dose of navy or indigo add a sense of depth, while clearly defining the space - ideal for open-plan areas.

Layer differently textured surfaces in these eye-catching hues to add further depth.



02

01

Polichrome

4266010 Distant

4265014 Infinity

4265003 Caviar

4266004 Liquorice

02

Case Study: Dimension Data - Belgium

Heuga 727

03

Look Both Ways - Step in Time

9403005 Indigo

Walk the Aisle

A01303 Cool Ash



03



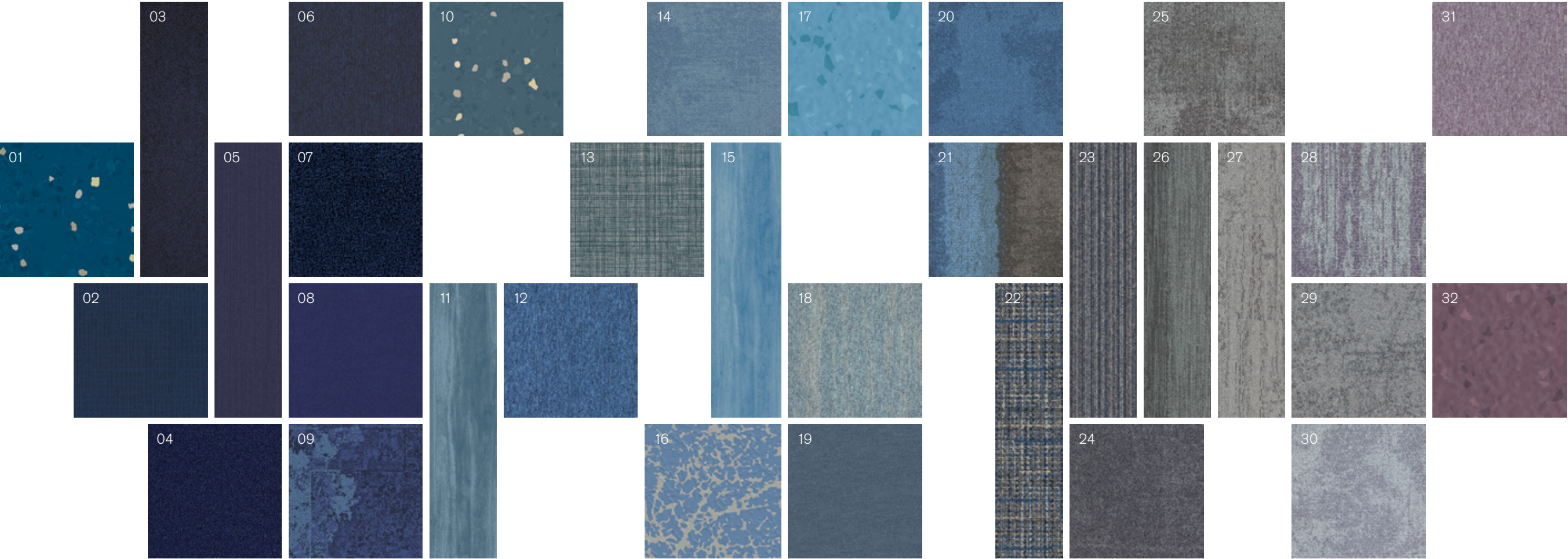


- 01  
Employ Loop  
4197023 *Lavender*  
Works Hype  
4275005 *Violet*
- 02  
Radial  
4272010 *Projection*  
4272007 *Vertex*  
4272005 *Atomized*
- 03  
Composure  
4169063 *Aubergine*  
4169062 *Lavender*  
4169061 *Pewter*



Soothing shades of lilac, violet and lavender blue combine with pewter and neutral tones to create a calming environment with an unexpected twist.





01 noraplan® signa 7077 Rubber Flooring	05 On Line 7335027 Cobalt Carpet Tile	09 Net Effect - B602 332914 Pacific Carpet Tile	13 Native Fabric A00807 Bluegrass LVT	17 norament® 926 satura 5122 Rubber Flooring	21 Composure Edge 4274006 Sapphire/Diffuse Carpet Tile	25 Composure 4169016 Reserved Carpet Tile	29 Ice Breaker 4282004 Chalk Carpet Tile
02 Monochrome 346708 Lobelia Carpet Tile	06 Employ Loop 4197020 Oxford Carpet Tile	10 noraplan® signa 7046 Rubber Flooring	14 Composure 4169059 Marine Carpet Tile	18 Works Flow 4276012 Cobalt Carpet Tile	22 World Woven - WW895 8114003 Highland Weave Carpet Tile	26 Touch of Timber 4191009 Blue Spruce Carpet Tile	30 Composure 4169061 Pewter Carpet Tile
03 Human Nature - HN830 608004 Cobalt Carpet Tile	07 Touch & Tones 103 4176013 Ultra Marine Carpet Tile	11 Studio Set A00713 Slate LVT	15 Studio Set A00709 Ocean LVT	19 Polichrome 4266014 Powderblue Carpet Tile	23 World Woven - WW895 8110003 Highland Warp Carpet Tile	27 Human Nature - HN820 308064 Limestone Carpet Tile	31 Heuga 530 II 4288016 Frosted Lilac Carpet Tile
04 Touch & Tones 101 4174013 Ultra Marine Carpet Tile	08 Polichrome 4266015 Blue Nights Carpet Tile	12 Heuga 530 II 4288020 Blue Moon Carpet Tile	16 noraplan® Iona 6918 Rubber Flooring	20 Composure 4169058 Sapphire Carpet Tile	24 Ice Breaker 4282002 Granite Carpet Tile	28 Works Flow 4276011 Violet Carpet Tile	32 norament® 926 satura 5122 Rubber Flooring





## SUBTLE BLUSH

Our warm and nurturing palette creates a welcoming and familiar working environment that has a softened tone.

A calm and serene mix of pale plaster-like pink, salmon and rose blush bring a sense of revitalisation and new-beginnings, creating spaces that feel sociable and spirited.

In contrast, sumptuous colours of the earth including red clay, terracotta, burnt umber and russet tones, radiate a sense of nostalgia for simpler times.

Collectively, these shades create workplaces that feel both uplifting and nourishing - inviting people to settle into their work with comfort and buoyancy.





---

# ORIGINS & INFLUENCES

---

Building on the seemingly unstoppable rise of Millennial Pink, Pantone's selection of Living Coral as their colour of the year in 2019 further amplified the popularity of these feminine shades.

For 2020, we see a natural evolution of these light-hearted and vivacious hues towards an altogether more grounded collection of muted, chalky and softened tones.

The naturally heart-warming qualities of this colour palette resonates very deeply with consumers today, many of whom are seeking the antidote to their digital lives and craving authentic, personal connection.

The fashion catwalks of London, Paris and New York were ablaze with rich, burnished shades of terracotta and muted clay, as many of the most influential designers shared their AW20 collections.

It's interesting to note the translation of these hues into restaurant and hotel design, with two of the most luxurious and iconic hotels in London - The Berkeley and The Connaught - recently unveiling new restaurant and bar concepts enriched with shades of salmon and dusty pink.

Equally, in retail design, these shades create an vibrant yet comforting space, with Gina Tricot in Stockholm and Le Cube skate bowl installation in Le Bon Marche, proving that pink isn't just for girls.







01



02



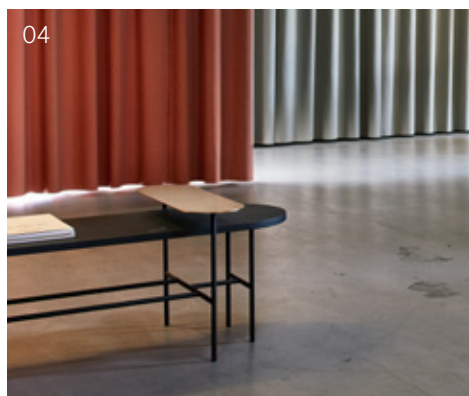
03



06



05



04

# INTERIORS INSPIRATION

Ever the barometer of what's to come, Milan Design Week 2019 was rich with references to this light-spirited palette. Not only in the design of the furniture on display, but in the set-design of the exhibits.

The 'Tell Me More' installation explored the intersection of spatial experience and emotional connection. Inspired by the feeling of entering a beloved space, the two-part installation consists of an arrival chamber and expansive lounge, which served as a backdrop to explore human connection.

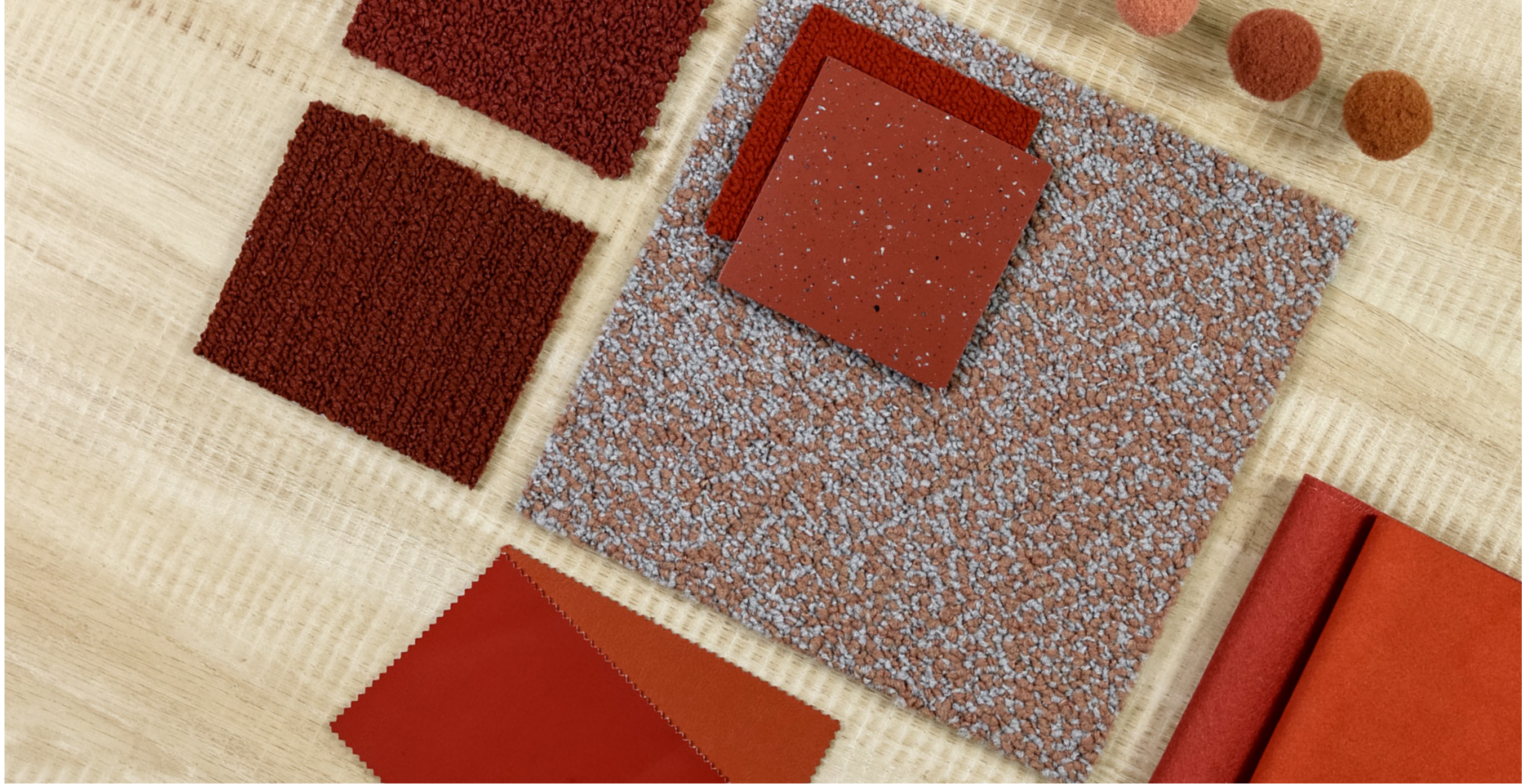
It seems that interior designers are also rapidly falling for these shades, bringing this powdery palette into the comfort of our own homes.

At one end of the spectrum, designers like Bergman & Co. are adding a burst of sunshine to bathroom design and creating a statement with hedonistic colours and a vibrant cocktail of shades.

Taking a more reserved approach, 'Rosa Perlino' tumbled marble brings a subtle rosy glow into kitchen design with putty and clay tones. Used sparingly, a barely-there blush provides a delicate, grown-up glow to contemporary kitchen design.

SEE PAGE 51 FOR PHOTOGRAPHY REFERENCE DETAILS





---

## COMBINATIONS

---

Louder than pink and softer than red, our colour palette creates a refreshingly different workspace environment.





01  
Radial  
4272004 Signal

02  
Composure  
4169011 Soothe  
Human Nature - HN840  
308076 Shale  
Human Nature - HN830  
608008 Bone



The lighter hues in our colour palette combine together to create an uplifting workplace that feels calm and serene.

To complete this look, explore tone-on-tone patterns, along with a thoughtful and considered selection of tactile and textural fabrics and materials.





01



Transform spaces into striking statement pieces by introducing playful accents and highlights.

Not only will this help to create distinct zones, it will naturally introduce character and warmth.



02

01

Look Both Ways - Step it Up

9406006 Sienna

Look Both Ways - Step in Time

9403003 Ebony

02

Case Study: Microsoft, Russia

Transormation

1628024 Lava

Off Line

7559001 Mushroom/Biscuit

03

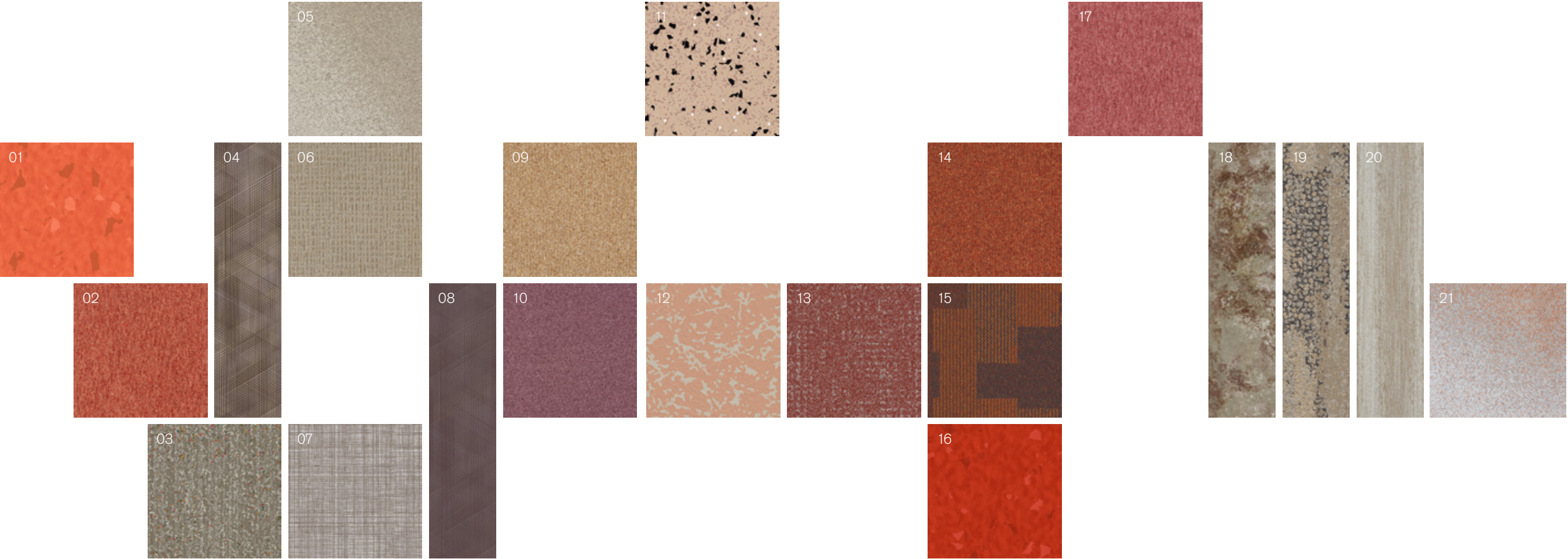
Heuga 530 II

4288014 Terracotta



03





01  
norament® 926 satura  
5120  
*Rubber Flooring*

02  
Heuga 530 II  
4288014 Terracotta  
*Carpet Tile*

03  
Look Both Ways - Step Aside  
9404001 Alba  
*Carpet Tile*

04  
Drawn Lines  
A00904 Smokey Quartz  
*LVT*

05  
Radial  
4272001 Axis  
*Carpet Tile*

06  
Monochrome  
346722 Malt  
*Carpet Tile*

07  
Native Fabric  
A00801 Flax  
*LVT*

08  
Drawn Lines  
A00911 Amethyst  
*LVT*

09  
Heuga 727  
672715 Camel  
*Carpet Tile*

10  
Polichrome  
4265024 Mulberry  
*Carpet Tile*

11  
noraplan® ultra grip  
6021  
*Rubber Flooring*

12  
noraplan® Iona  
6915  
*Rubber Flooring*

13  
Look Both Ways - Step it Up  
9406006 Sienna  
*Carpet Tile*

14  
Heuga 727  
672718 Paprika  
*Carpet Tile*

15  
Transformation  
1628024 Lava  
*Carpet Tile*

16  
norament® 926 satura  
5119  
*Rubber Flooring*

17  
Heuga 530 II  
4288015 Dusty Rose  
*Carpet Tile*

18  
Boundary Metallics  
A00605 Fawn  
*LVT*

19  
Human Nature - HN850  
308086 Shale  
*Carpet Tile*

20  
Touch of Timber  
4191003 Oak  
*Carpet Tile*

21  
Radial  
4272004 Signal  
*Carpet Tile*





World Woven - WW895  
8114006 Autumn Weave  
Level Set Natural Woodgrains  
A00214 Bamboo

## GOLDEN OCHRE

A palette of classic new neutrals are uplifted with a dollop of spice to create an energising workplace.

Warm sunbeams of golden yellow, mimosa and citrine combine with a pinch of mustard to add a playful twist to softer shades of cream, barley, and cashew.

While a delicious mix of earthy and rich terracotta, saffron and tumeric creates spaces that ooze warmth and comfort.

These gleaming golden and ochre-based tones are guaranteed to take the edge of a stressful working day.





## A 5x5 grid of 25 images and color swatches. The images include architectural details like a perforated metal screen, a building facade with windows, and a courtyard. Nature scenes include autumn trees, a bird in flight, and a person on a rooftop. Other images show a close-up of a flower, a person on a rooftop, a close-up of a flower, and a close-up of a flower. The bottom row consists of 25 solid color swatches in various shades of yellow, orange, and brown.

These golden shades instil a much-needed sense of light-heartedness within retail environments, with precious yellow onyx and inserts of gold leaf adding glimmers of warmth to the Forte Forte store in Chelsea, and homely pastel tones infused with bursts of sunshine yellow in the Ganni store in Soho, London.



---

# INTERIORS INSPIRATION

---

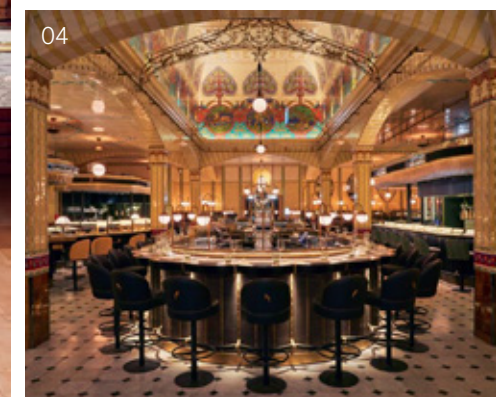
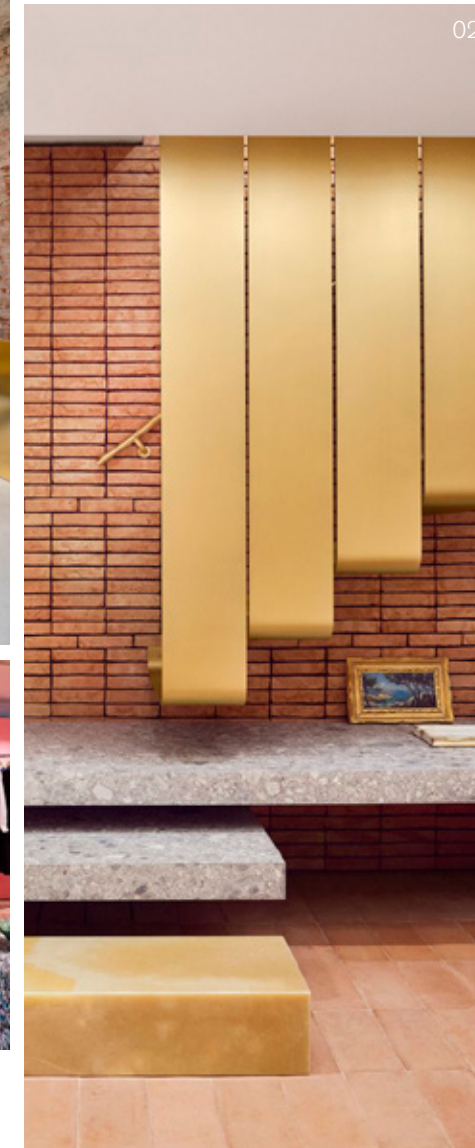
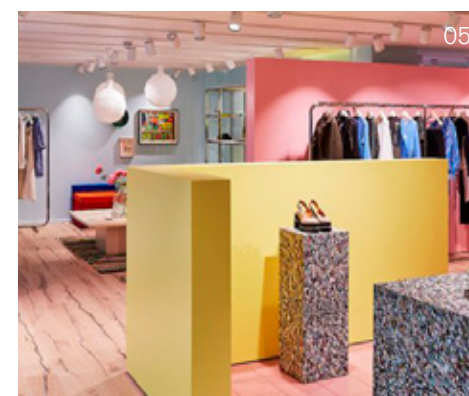
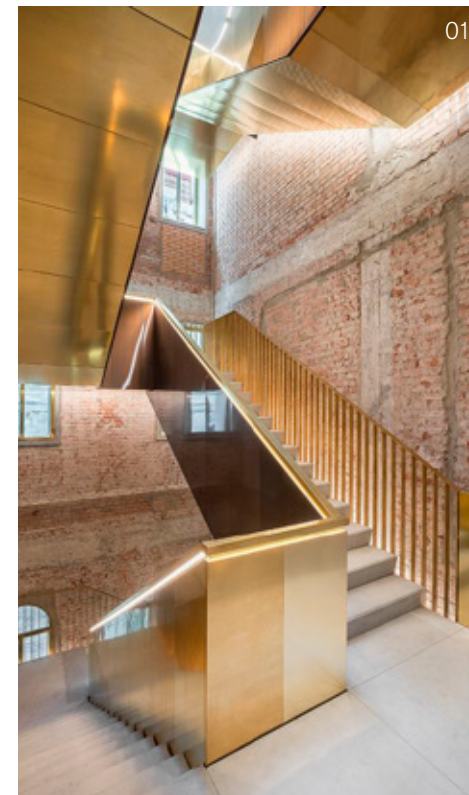
Golden, buttery tones are an instant way to energise interiors and lift our moods.

Many designers are opting for a single shade and sticking to it, using it over as big a space as they dare. Pairing with neutral accents, or picking out the same bright hue on patterned tiles.

Vogue Italia opened its office to a host of designers, who gave the Milan headquarters a temporary makeover for the city's annual design festival. The exhibition, called 'Life in Vogue', saw eight creatives reinterpret the interiors of the magazine's editorial offices, including JW Anderson who painted the fashion editor's room in a vibrant shade of yellow typically found in British stately homes.

These tones of mustard, ochre and burnished bronze are also overwhelmingly popular in furniture design, as almost all of the most notable brands have embraced these hues.

Reflecting the more earthy and neutral shades of our colour palette, the pared-back gallery and workspace for Kinfolk magazine in Copenhagen perfectly illustrates how a lightness of touch can create a calm yet uplifting environment.



SEE PAGE 51 FOR PHOTOGRAPHY REFERENCE DETAILS





# COMBINATIONS

Whether used in moderation - with just a dollop of spice or a burst of bright - or embraced in it's entirety, our warming palette has the potential to create an energising and upbeat workplace.





01



02

01  
Polichrome  
4266018 *Mimosa*  
On Line  
7335004 *Sage*  
Off Line  
7559004 *Sage/Canary*

02  
Urban Retreat - UR501  
327500 *Gold*  
327514 *Granite*

03  
Off Line  
7559004 *Sage/Canary*  
On Line  
7335005 *Canary*  
7335004 *Sage*



03

Nuggets of gold, saffron and mustard spice up an otherwise neutral interiors scheme.





01



02

Sunbeams of golden tones add a burst of brightness to workplace environments and zone areas in a playful, energetic way.



03

01  
Visual Code - Circuit Board  
9280002 Yellow Circuit

02  
Composure  
4169073 Sunburst  
4169017 Seclusion  
Composure Edge  
4274004 Sunburst/Seclusion

03  
Superflor  
9101 Yippee  
9169 Siberian Frost

04  
Level Set - Natural Woodgrains  
A00214 Bamboo



04





01  
Native Fabric  
A00804 *Straw*

02  
On Line  
7335003 *Mustard*

03  
Radial  
4272003 *Rays*  
Level Set - Textured Stones  
A00301 *Polished Cement*

04  
World Woven - WW865  
8110006 *Autumn Warp*

01



02



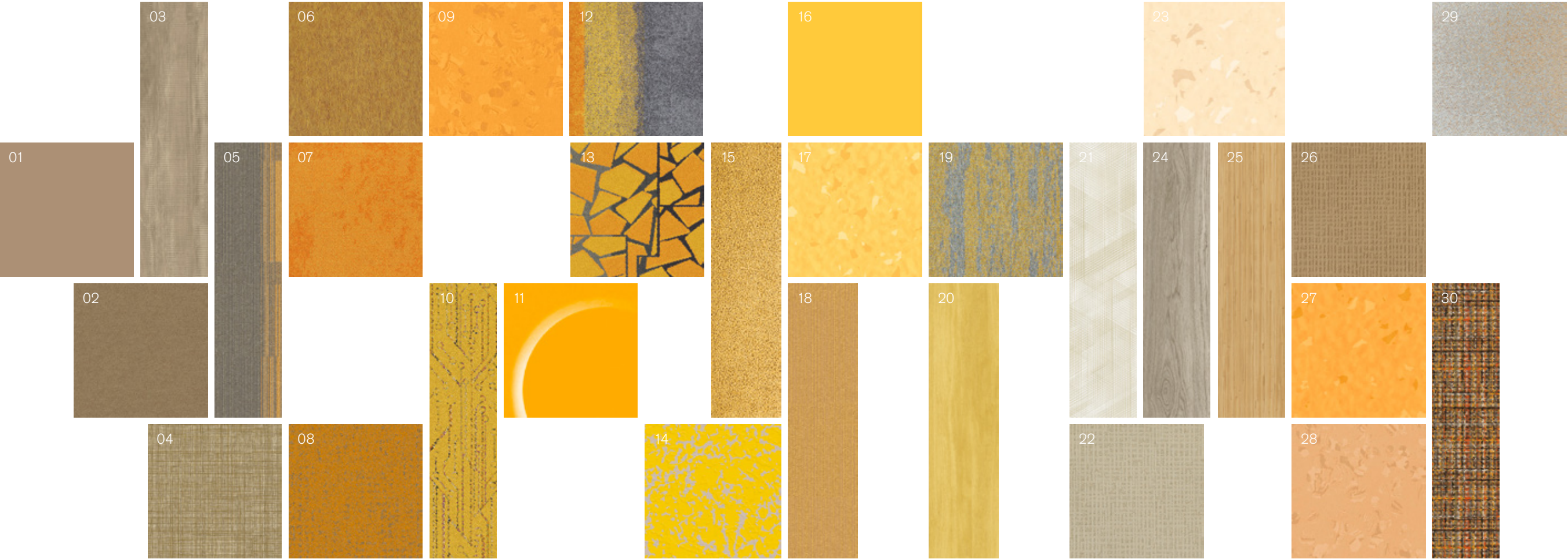
03



04

Warming shades of straw, opal and ginger provide a natural glow.





01 noraplan® uni 2144 <i>Rubber Flooring</i>	05 Off Line 7559004 Sage/Canary <i>Carpet Tile</i>	09 noraplan® sentica 6513 <i>Rubber Flooring</i>	13 Human Connections - Rue 8344004 Yellow <i>Carpet Tile</i>	17 norament® 926 satura 5124 <i>Rubber Flooring</i>	21 Drawn Lines A00910 Opal <i>LVT</i>	25 Level Set - Natural Woodgrains A00214 Bamboo <i>LVT</i>	29 Radial 4272003 Rays <i>Carpet Tile</i>
02 Polichrome 4266021 Marzipan <i>Carpet Tile</i>	06 Superflor 9101 Yippee <i>Carpet Tile</i>	10 Visual Code - Circuit Board 9280002 Yellow Circuit <i>Carpet Tile</i>	14 noraplan® Iona 6920 <i>Rubber Flooring</i>	18 On Line 7335005 Canary <i>Carpet Tile</i>	22 Monochrome 346726 Cream <i>Carpet Tile</i>	26 Monochrome 346730 Barley <i>Carpet Tile</i>	30 World Woven - WW895 8114006 Autumn Weave <i>Carpet Tile</i>
03 Level Set - Textured Woodgrains A00421 Rustic Oak <i>LVT</i>	07 Composure 4169073 Sunburst <i>Carpet Tile</i>	11 norament® 926/825 6191 <i>Rubber Flooring</i>	15 Human Nature - HN830 608002 Maize <i>Carpet Tile</i>	19 Works Flow 4276007 Canary <i>Carpet Tile</i>	23 norament® 926 satura 5101 <i>Rubber Flooring</i>	27 norament® 926 satura 5123 <i>Rubber Flooring</i>	
04 Native Fabric A00804 Straw <i>LVT</i>	08 Look Both Ways - Step it Up 9406004 Citrine <i>Carpet Tile</i>	12 Composure Edge 4274004 Sunburst/Seclusion <i>Carpet Tile</i>	16 noraplan® uni 6179 <i>Rubber Flooring</i>	20 Studio Set A00712 Marigold <i>LVT</i>	24 Level Set - Natural Woodgrains A00207 Washed Wheat <i>LVT</i>	28 noraplan® sentica 6536 <i>Rubber Flooring</i>	



---

# REFERENCES

---

## INTO THE BLUE

pg 09

---

01. Aria installation at Ventura Centrale  
[www.dezeen.com/2019/02/26/ventura-future-ventura-centrale-milan-design-week-2019/](http://www.dezeen.com/2019/02/26/ventura-future-ventura-centrale-milan-design-week-2019/)
02. Bakken & Bæck HQ, Design by Kvistad  
[www.dezeen.com/2019/10/10/scandinavian-spaceship-office-interiors-kvistad/](http://www.dezeen.com/2019/10/10/scandinavian-spaceship-office-interiors-kvistad/)
03. The Office Group, Summit House  
[www.theofficegroup.com/uk/summit-house](http://www.theofficegroup.com/uk/summit-house) Bugatti Home
04. Bugatti Home Collection  
[newsroom.bugatti.de/pressemeldungen/salone-internazionale-del-mobile-2016-milan-](http://newsroom.bugatti.de/pressemeldungen/salone-internazionale-del-mobile-2016-milan-)
05. Kimpton De Witt. Amsterdam  
[www.kimptondewitthotel.com/us/en/index.html?cm\\_mmc=GoogleMaps\\_-\\_NLD\\_-\\_AMSNL](http://www.kimptondewitthotel.com/us/en/index.html?cm_mmc=GoogleMaps_-_NLD_-_AMSNL)
06. Perfect Darkness installation  
[www.dezeen.com/2019/04/18/ho-perfect-darkness-tiles-exhibition-interior-design-milan/](http://www.dezeen.com/2019/04/18/ho-perfect-darkness-tiles-exhibition-interior-design-milan/)

## SUBTLE BLUSH

pg 24

---

01. Rapt Studio's Tell Me More installation  
[design-milk.com/ventura-projects-returns-to-milan-design-week-with-its-future-and-centrale-exhibitions/](http://design-milk.com/ventura-projects-returns-to-milan-design-week-with-its-future-and-centrale-exhibitions/)
02. Introvert Extrovert Pendant, Haberdashery  
[www.haberdashery.com/work/introvert-extrovert/](http://www.haberdashery.com/work/introvert-extrovert/)
03. The Office Group, Summit House, London  
[www.theofficegroup.com/uk/summit-house](http://www.theofficegroup.com/uk/summit-house)
04. & Tradition, Copenhagen  
[www.andtradition.com/](http://www.andtradition.com/)
05. The Berkeley Bar, London  
<https://www.dezeen.com/2019/07/16/berkeley-bar-terrace-interiors-bryan-osullivan-studio/>
06. The Office Group, Summit House, London  
[www.theofficegroup.com/uk/summit-house](http://www.theofficegroup.com/uk/summit-house)

## GOLDEN OCHRE

pg 39

---

01. Fondaco dei Tedeschi, Milan  
[www.designboom.com/architecture/rem-koolhaas-oma-fondaco-dei-tedeschi-venice-department-store-06-0](http://www.designboom.com/architecture/rem-koolhaas-oma-fondaco-dei-tedeschi-venice-department-store-06-0)
02. Forte Forte, London  
<https://www.dezeen.com/2019/12/11/forte-forte-london-shop-interiors/>
03. JNYB Home, China  
[www.frameweb.com/news/greyoffice-jnbyhome-makers-grocery-store-hangzhou](http://www.frameweb.com/news/greyoffice-jnbyhome-makers-grocery-store-hangzhou)
04. Harrods Food Hall, London  
[www.bighospitality.co.uk/Article/2019/06/25/Harrods-unveils-Dining-Hall-concept](http://www.bighospitality.co.uk/Article/2019/06/25/Harrods-unveils-Dining-Hall-concept)
05. Ganni, London  
[www.dezeen.com/2019/08/19/ganni-beak-street-london-store-interiors/](http://www.dezeen.com/2019/08/19/ganni-beak-street-london-store-interiors/)





## Carbon Neutral Floors™

Create a climate fit for life. All Interface flooring sold globally is third party verified carbon neutral. See more at [interface.com](http://interface.com)

### Europe, Middle East & Africa

AE	+971 (0)4 8189077
AT	+43 1 8102839
BA	+387 33 522 534
BE	+32 2 475 27 27
BG	+359 2 808 303
BY	+375 17 226 75 14
CH	+41 44 913 68 00
CZ	+42 0 233 087 111
DE	+49 2151 3718 0
DK	+45 33 79 70 55
ES	+34 932 418 750
EG	+(202) 3760 7818
FR	+33 1 58 10 20 20
GR	+30 211 2120820
HR	+385 14 62 30 63
HU	+36 1 349 6545
IE	+353 1 679 8466
IL	+972 546602102
IT	+39 02 890 93678
KZ	+7 495 234 57 27
NL	+31 33 277 5555
ME	+381 11 414 92 00
MK	+389 2 323 01 89
NO	+47 23 12 01 70
PL	+48 500 151 101
PT	+351 217 122 740
RO	+40 21 317 12 40/42/43/44
RS	+381 11 414 92 00
RU	+7 495 234 57 27
SA	+966 554622263
SE	08-241 230
SK	+421 911 104 073
SI	+386 1 520 0500 +386 8 20 54 007
TR	+90 212 365 5506
UA	+38(044)238 27 67
UK	+44 (0)800 3134465
ZA	+27 11 6083324

