



Interface®

Enhancing the learning environment.

Modular flooring for higher education



Teeside University
Products shown - Straightforward II, Touch & Tones

When students make
choices, **make sure**
they choose you.



Interface modular flooring helps you design the perfect setting for all kinds of students, supporting their well-being and progress. We give you the variety, flexibility and durability you need – cost-effectively and sustainably.



Designed to be practical.

Product Benefits

- **Superior Acoustics**
- **Easy Installation**
- **Less installation waste than broadloom carpet**
- **Easy cleaning and maintenance**
- **Durability**
- **Extensive selection of ranges and colourways**
- **Compatible formats - Skinny Planks and Square options**
- **Create Carpet and LVT designs without transition strips, connectors or bridges**
- **QuickShip, 24 hour dispatch of selected ranges**
- **15 Years Warranty**
- **All products Carbon Neutral Floors™**

Needs change. Your floor can, too.

As student life involves such a wide range of activities, it demands a variety of spaces, all capable of responding as things change. We offer the choice of colours, patterns, textures and formats to help create these spaces, and the flexibility to adapt them quickly and cost-effectively.

Whether it's lecture halls, teaching rooms, libraries, corridors, student accommodation or social areas, modular flooring helps you meet the evolving needs of students and staff – simply because it's based on interchangeable components, which are easy to reconfigure.

And with Interface, these components include carpet tiles and LVT luxury vinyl tiles that work perfectly together without transition strips, connectors or bridges. Plus, you can combine our 50 x 50cm squares and 100 x 25cm Skinny Planks, multiplying your design options even further.

Economical in many ways.

With modular flooring, the savings start during installation – by saving waste. In a typical room, fitting broadloom carpet generates 10-15% waste, whereas with carpet tiles, that drops to 3-4%. And it's only 1-2% with our random or non-directional designs. You buy less because you throw less away.

You see further savings because our flooring is hardwearing and easy to maintain. All our products carry a 15-year warranty – and with proper care and maintenance, they'll keep looking fresh for many years more. And when you do need to replace any flooring, it's unlikely to affect an entire room. In most spaces, 20% of the floor gets 80% of the wear. With modular flooring, that's all you need to replace.

Keeping noise down, and concentration up

Students need to listen, read and think without noisy distractions. They also need a good night's sleep. We can help you control sound levels in lecture halls, teaching rooms, libraries and student accommodation – through the right choice of flooring. Our modular carpet helps reduce the disruption of poor acoustics, and our SONE and Interlay resilient underlays provide even greater protection. And with our LVT, the integrated Sound Choice acoustic backing has gained an award from Quiet Mark, an international programme supporting low-noise technology.







Concept Design

Designing for Higher Education

How we can help?

During the initial consultation we seek to understand your space and the needs of your students, making sure we can create the most inspiring design possible.

Consultation

As a team, we combine our insights with market trends to start building a concept for you.

Ideation

Development

Detailing

Final Design

With the help of our in-house artworkers we develop the concept using many tools including 2D floor layout and 3D visuals

We define a suite of Interface products that will meet your needs on a practical as well as design level. A finished plan is created and can be used by our supply and fit team for installation.



Creative support from our concept design team.

You know what you want from a space, and we can help you make the most of our products to achieve the right results, within budget. Our Concept Designers look at the potential uses – and any particular challenges – of each area, and propose distinctive floor designs to create the best learning and social environment for your students.

Is it a space for technology? For creativity? For independent or collaborative work? Beginning with the floor, we can create spaces – and spaces within spaces – to support different activities. And when we team up carpet tiles and LVT, the possibilities are virtually endless.

Our support includes creating custom colours or mood boards, presented in 2D and 3D visualisations. We can also provide a design guide to make installation quick and easy.



Concept Design in action:

**Oxford Brookes
University.**



An ambition to provide an all-round learning and life experience for students was fundamental to Oxford Brookes University's recent redevelopment of its Clerici Building. The project involved transforming it for various uses: the Oxford Brookes Business School; a range of teaching rooms; and the Sir Kenneth Wheare Hall, a flexible space for teaching, events and graduations.





If our students like being in these spaces, we've done our job."

Drew Hardie,
Head of Space Planning,
Oxford Brookes

Our Concept Design team worked closely with Oxford Brookes, using some of our nature-inspired collections to create welcoming, multi-use spaces. As Laura Light, one of our Concept Designers, said, "We knew we needed to be flexible, while maintaining impact across wide spaces. We also needed to add a lot of diversity, so used several ranges to complete the overall effect."

In the Sir Kenneth Wheare Hall, our Human Nature range is ideal for the main auditorium, which is also a light, airy walkway. We complemented this with our Composure range to provide subtle wayfinding. Composure also features in the main entrance and learning spaces, where three designs from the range create variations in texture and pattern, defining different areas. Our Urban Retreat 103, Infuse and Equilibrium ranges add further interest throughout the building, with skinny planks in Kiwi maintaining a strong colour theme.

Drew Hardie, Head of Space Planning at Oxford Brookes, said: "Clerici is a key building, used for social learning, teaching, meeting academics and research. If our students stay here because they like being in these spaces, we've done our job." Tracy Panther, Associate Dean of Student Experience at the Business School, agrees: "It's been absolutely fantastic to see students move in so quickly and use every inch of the building. They're spending more time here because it's homely and comfortable."

Taking care of your whole flooring project our supply & fit service.

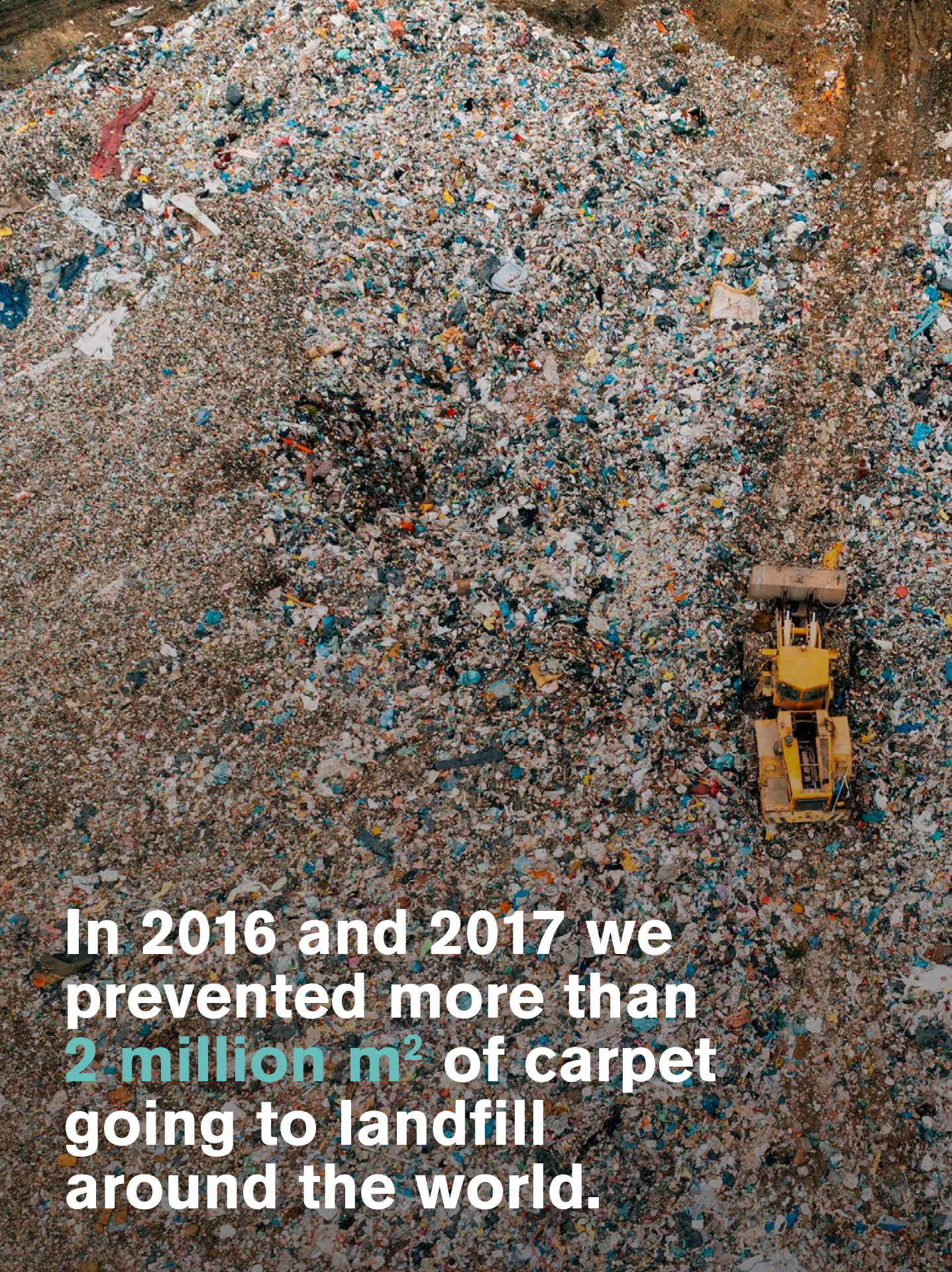
When you choose Interface flooring, you know you're choosing excellent products. You can have the same high standards when it comes to installation.

With Supply and Fit, you select from our extensive range of carpet tiles and LVT luxury vinyl tiles, and our experienced installation teams fit it for you – quickly, efficiently, and with the minimum disruption.

No matter where you are in the UK, we'll take care of everything. Even if you need new flooring at several sites, you deal with a single point of contact – to buy your flooring, arrange fitting, and deal responsibly with your old carpet.

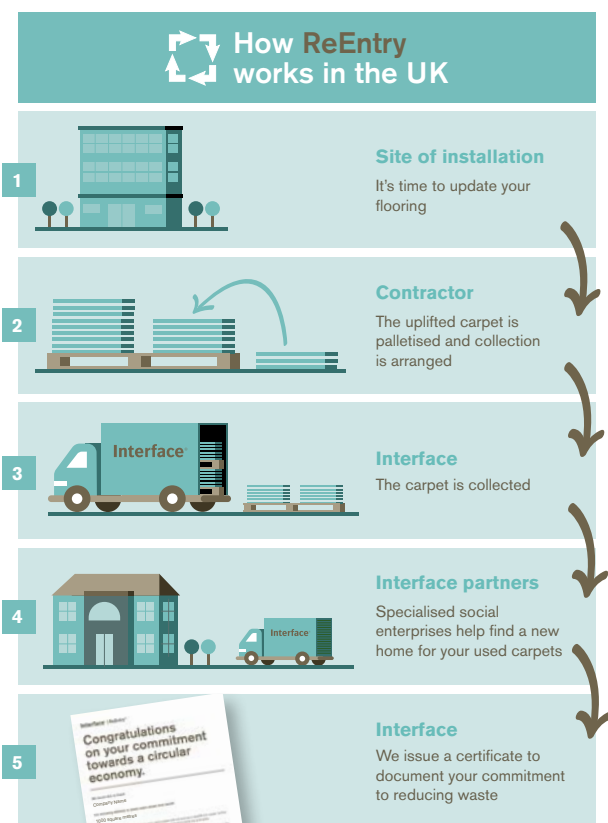


Interface®



In 2016 and 2017 we
prevented more than
2 million m² of carpet
going to landfill
around the world.

Giving new life to old carpets, with ReEntry.



We won't let all the hard work and precious resources that make a carpet go to waste. With ReEntry®, we create more value from your flooring.

We take care of collecting your used carpet tiles, which saves you a lot of hassle. And we put them to good use – in one of four ways.

If they're still in fair condition, we pass them to social enterprises, who reuse them in homes or community spaces. If that's not appropriate, we convert them into other products, or recycle them into new carpet. Or, if they can't be reused, converted or recycled, we send them to a waste-to-energy facility.

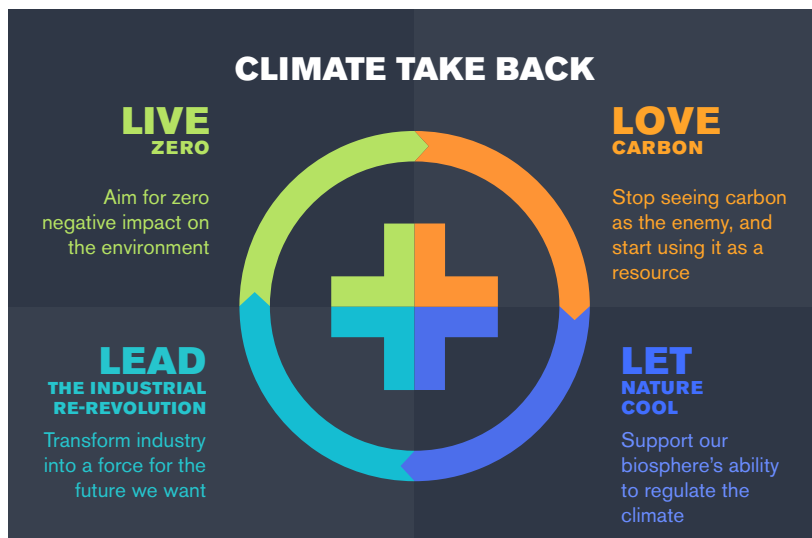
Whatever happens, it's good for communities, the environment, or both – and you receive a certificate, documenting your commitment to reducing waste.

Our next environmental mission: **Climate Take Back.**

At Interface, we're convinced a fundamental shift needs to happen in our global response to climate change. We need to stop just thinking about how to limit the damage caused by climate change – and start thinking about how to create a climate fit for life.

After decades of hard work, we are poised to reach our Mission Zero® goal of eliminating any negative impact our company has on the environment by 2020.

Now, Climate Take Back™ is our new mission. We commit to running our business in a way that has a positive impact on the environment – and we call on others to do the same.





Lancaster University
Product shown - Urban Retreat - UR501



Working with the EAUC.



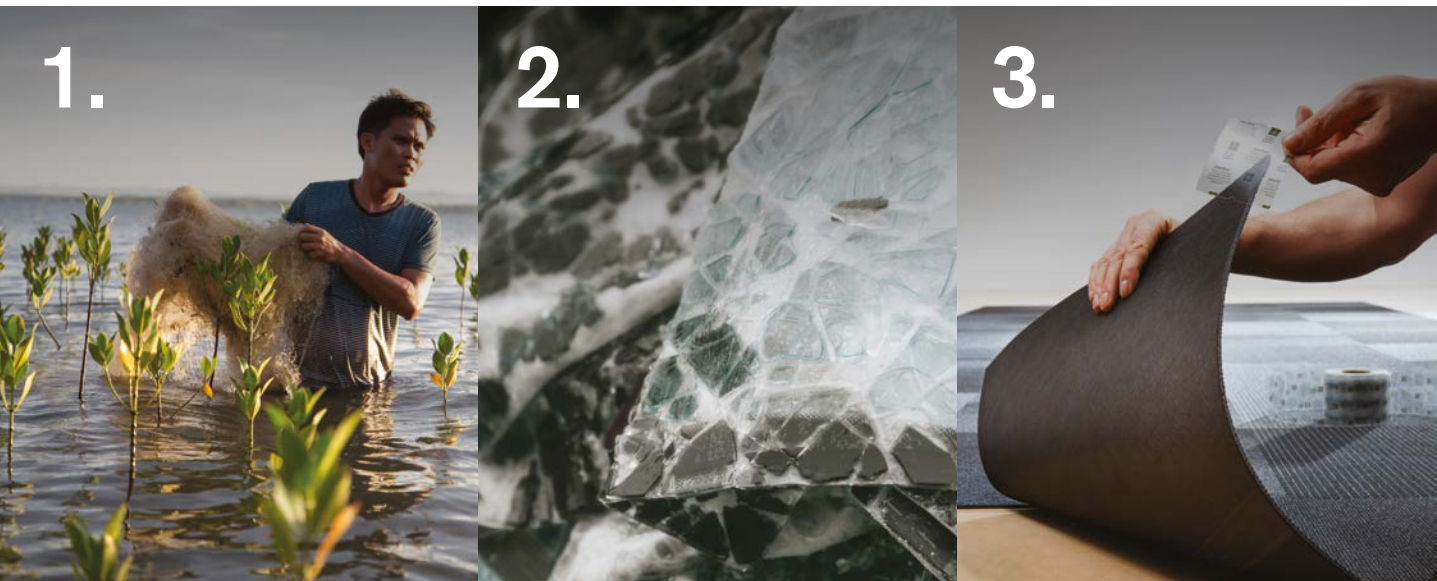
Environmental Association For Universities And Colleges (eauc)

In all our initiatives to build sustainability into our business, we have a particular focus on higher education. We're proud to be the only flooring specialist associated with the EAUC, the sustainability champion for universities and colleges in the UK. As a platinum sponsor, we work with the EAUC's members (more than 300) to help create increasingly sustainable learning environments.

We partner with many other like-minded organisations globally, to exchange knowledge and progress together.

For our products, we support transparency through Environmental Product Declarations, and test them to the strictest standards for good indoor air quality. All our products will help contribute to leading green building schemes such as BREEAM, LEED, SKA and WELL.

Helping protect the environment - **steps we are taking.**



1. Net-Works® Net-Works is a collaborative initiative formed by Interface and conservation charity, the Zoological Society of London (ZSL) designed to tackle the growing environmental problem of discarded fishing nets in some of the world's poorest coastal communities.

2. PVB Interface has partnered with the glass recycling supply chain to process the laminate material, Poly Vinyl Butral (PVB), from broken car windscreens and use it in the production of carpet tiles. This means we are able to reduce the carbon footprint of our carpet tiles and extend the useful life of PVB at the same time.

3. TacTiles® With over 40 million square metres installed since 2006, TacTiles are the proven glue-free and sustainable way to install Interface modular flooring. TacTiles emit virtually no VOCs, and are completely odour free and are compliant with all current green building schemes.

Our aim is always to develop products that have a positive impact on people's lives, their spaces and the planet. Here are just some of the ways we're doing this.



4. ReEntry® We offer a range of options to create the most social and environmental value from your used carpets. Through this service, you're helping local communities, the environment, or both – and enhancing your organisation's sustainability credentials.

5. CircuitBac Green® Our latest backing innovation for carpet tiles, CircuitBac Green uses a mix of bio-plastics and mineral filler. This bio-based content provides a carbon-negative alternative to existing backing materials – which means it absorbs more carbon than it emits during its production.

6. Carbon Neutral Floors™ We're the first flooring company to ensure all our products across the world are carbon neutral. We achieved this by reducing the carbon footprint of our products by over 60% and using offsets to cover the remainder, supporting renewable energy and reforestation.



Avans Hogeschool, The Netherlands
Products shown - Composure & On Line

Learning
environments that
learn from nature.



Whether we realise it or not, we all have an innate desire to be connected to the natural world. This is called biophilia – and design that embraces biophilic principles, by bringing the outside inside, is probably one of the most powerful ways of enhancing a sense of well-being in learning environments.

It's proven to reduce stress and restore calm, lowering blood pressure and heart rate. Not surprisingly, this tends to make students and staff happier and more relaxed. They're more productive, can concentrate for longer, and find learning easier and more enjoyable.

At Interface, what we learn from nature is central to our way of thinking and designing. Our collections of carpet tiles and LVT feature many natural references in pattern, colour and texture, creating a feeling of closeness to nature, indoors.

Carpet + LVT = versatile spaces.

Because we've designed our LVT and carpet tiles to work as one, without transition strips, you have countless opportunities for creative combinations. Hard surfaces with soft textures. Subtle or strident pairings of pattern and colour. Our extensive collections give you enormous scope for truly distinctive flooring designs.

And with our format options – square tiles and Skinny Planks – you have yet more creative freedom and flexibility.

Most importantly in learning environments, where spaces need to perform several functions, our modular flooring lets you create zones, with each one clearly identified for a different use.

The versatility you need starts with the floor.





Defining multi-use spaces:

Nottingham University Business School.

“

Our students love using the space. We're thrilled with the end result.”

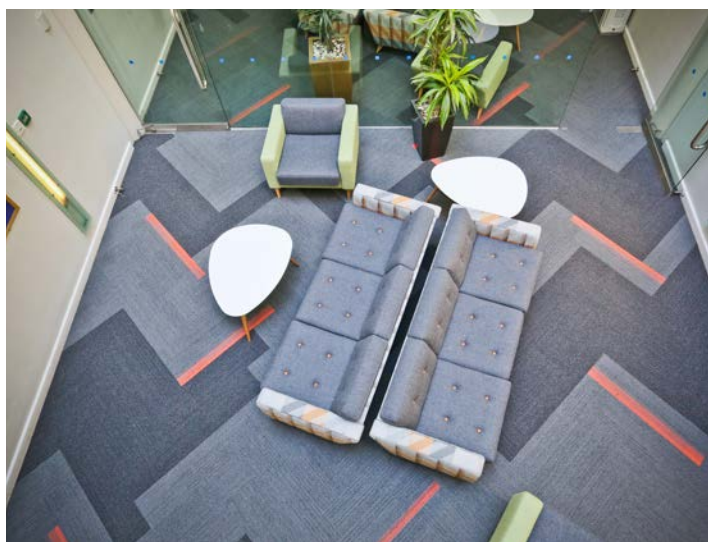
Stavros Pourikas, Capital Projects Officer,
University of Nottingham

When Nottingham University Business School wanted to transform its lobby into a much more welcoming space, we worked closely with fit-out specialists B+M Installations to help introduce a homely, calming feel to the business-like interior. The new flooring also had to help identify areas for different uses within the overall space.

Donna Dent, one of our Concept Designers, explains our approach: “We felt it was crucial to tap into the current trend for bringing artisanal fabrics, normally found in the domestic environment, into public spaces. This was our starting point for creating distinct zones.” The open-plan space now features breakout areas with flooring from our Scottish Sett collection, which has a tartan-like texture and tweed-inspired pattern. Also, our World Woven collection in charcoal tweed marks out workstations, helping separate these quieter study areas from those for group interaction.

A defined pathway runs between all the zones, guiding visitors from the doorway to the auditorium – and Skinny Planks from our On Line and Off Line collections create a striking focal point.

Stavros Pourikas, Capital Projects Officer at the University of Nottingham, was delighted with the refurbishment: “The design scheme really does create a warm, welcoming environment. Our students love using the space, and we're thrilled with the end result.”





We want to help you
create interior spaces
that **support learning.**



Attract more students, and make their time with you more enjoyable and rewarding. All while you save money and help care for the environment.

Want to know more about Interface?

If you have any questions, need samples or design support, or would like to visit one of our showrooms, we'd love to hear from you.

www.interface.com

This brochure is printed on 100% recycled paper

Europe, Middle East & Africa

AE	+971 (0)4 8189077
AT	+43 1 8102839
BA	+387 33 522 534
BE	+32 2 475 27 27
BG	+359 2 808 303
BY	+375 17 226 75 14
CH	+41 44 913 68 00
CZ	+42 0 233 087 111
DE	+49 2151 3718 0
DK	+45 33 79 70 55
ES	+34 932 418 750
EG	+(202) 3760 7818
FR	+33 1 58 10 20 20
GR	+30 211 2120820
HR	+385 14 62 30 63
HU	+36 1 349 6545
IE	+353 1 679 8466
IL	+972 546602102
IT	+39 02 890 93678
KZ	+7 495 234 57 27
NL	+31 33 277 5555
ME	+381 11 414 92 00
MK	+389 2 323 01 89
NO	+47 23 12 01 70
PL	+48 500 151 101
PT	+351 217 122 740
RO	+40 21 317 12 40/42/43/44
RS	+381 11 414 92 00
RU	+7 495 234 57 27
SA	+966 554622263
SE	08-241 230
SK	+421 911 104 073
SI	+386 1 520 0500 +386 8 20 54 007
TR	+90 212 365 5506
UA	+38(044)238 27 67
UK	+44 (0)1274 698503
ZA	+27 11 6083324

