

Interface®

Co-Working Spaces



- High Design Flexibility
- Standard Availability
- Easy on Pocket



The office environment will no doubt be changed as we advance out of the COVID-19 pandemic. While it is hard to know what the full impact of the coronavirus will be, it seems likely as business return to their workspaces or seek alternative co-working spaces there will be a renewed focus on wellbeing, physical and psychological security, and technology.

Design plays a huge role in incorporating these aspects into commercial real estate (CRE). The need for physical distancing will require some rethinking of office and co-working spaces designed for connection and collaboration between people. Leading real estate firm *JLL in India* is predicting a rise in the take up of co-working spaces and an increase in altered leasing models to support business as they come out of this challenging period.

So as Humans are social creatures, how can designers support CRE providers to facilitate interaction while keeping safety top-of-mind?

In co-working spaces modular flooring can play a pivotal role in helping to create zones for connection and wayfinding through the space without compromising the quality of the design. The floor is a major design element that can shape our *perception, experience* and behaviour. Businesses use floor design for aesthetics, branding and wayfinding, but now it will become more prominent in terms of safety. And as we're rethinking social norms, the visual cues provided by the floor can help us keep connected from a safe distance.

Here is some folio inspiration for creating boundaries, zones, and movement throughout various types of CRE to suit any price point.



Contents



Click the product name below to quickly navigate to your chosen product.

Works Eon **06**

Works Unite **14**

Coarse Change Etch **23**

Coarse Change Facet **30**

Coarse Change Trace **34**

Works Series

Works Eon

Works Eon is our latest addition to Works Series and is tied into that one vision – working smarter together for every space. Every detail of Works Series merges to give greater versatility and drive value, without costing the earth. Not only is it designed to look good, it's designed to last. With a minimalist profile achieved by a denser construction, it is engineered to deliver superior performance in areas of high footfall.



Cinder



Ebony



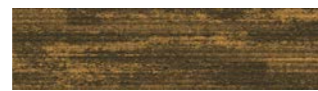
Cinder Lime



Ebony Lime



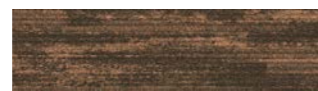
Cinder Mustard



Ebony Mustard



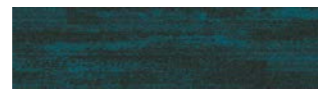
Cinder Orange



Ebony Orange



Cinder Teal



Ebony Teal

Product Construction Tufted Textured Loop
 Yarn/Fibre 100% Recycled content
 Machine Gauge 12th Gauge
 Pile Thickness 2.0mm
 Total Thickness 5.0mm
 Tile Size 25cm X 100cm
 Area of Use Commercial - Heavy Use
 Total Recycled Content 45-70%
 Installation Method Ashlar Herringbone





Works Eon Cinder & Cinder Orange



Works Eon Cinder & Cinder Mustard



Works Eon Cinder & Cinder Lime



Works Eon Cinder & Cinder Teal



Works Eon Ebony & Ebony Teal



Works Eon Ebony & Ebony Lime



Works Eon Ebony & Ebony Mustard



Works Eon Ebony & Ebony Orange



Works Eon Cinder & Cinder Teal



Works Eon Cinder & Cinder Orange



Works Eon Cinder & Cinder Mustard



Works Eon Cinder & Cinder Lime



Works Eon Ebony & Ebony Orange



Works Eon Ebony & Ebony Teal



Works Unite Mist & Mist Lime



Works Eon Ebony & Ebony Mustard



Works Eon Cinder & Cinder Teal



Works Eon Cinder & Cinder Lime



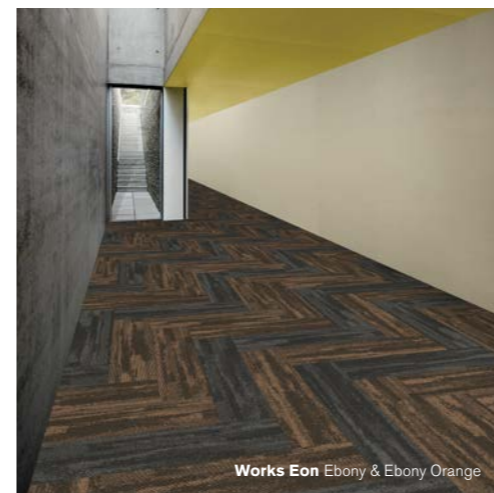
Works Eon Cinder & Cinder Mustard



Works Eon Cinder & Cinder Orange



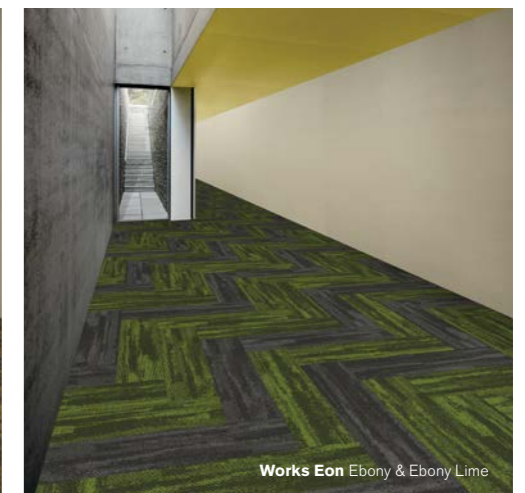
Works Eon Ebony & Ebony Teal



Works Eon Ebony & Ebony Orange



Works Eon Ebony & Ebony Mustard

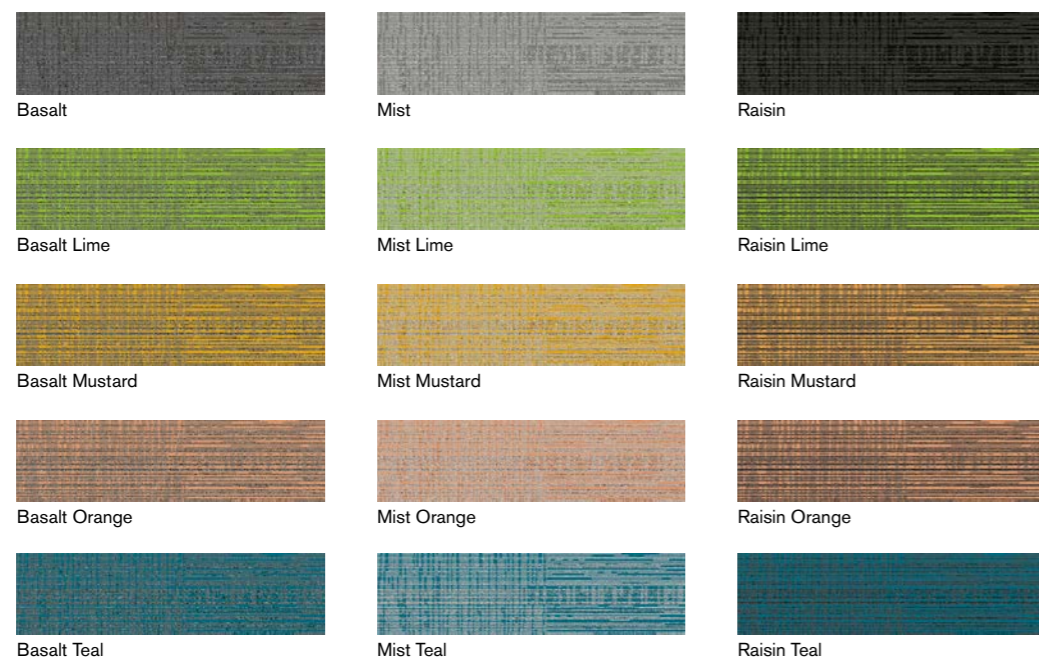


Works Eon Ebony & Ebony Lime

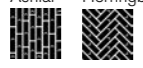
Works Series

Works Unite

Works Unite innovatively fuses contrasting, linear and organic patterns, seamlessly merging them into a plank format. Texture is grouped with height variation to create smart, layering effects and a sense of moving forward. Works Unite is the intuitive way of creating spaces where opposites attract, beautifully.



Product Construction Tufted Loop Pile
Yarn/Fibre BCF Nylon Type 6
Machine Gauge 12th Gauge
Pile Thickness 2.5mm
Total Thickness 5.5mm
Tile Size 25cm X 100cm
Area of Use Commercial - General Duty
Total Recycled Content 47-80%
Installation Methods Ashlar Herringbone

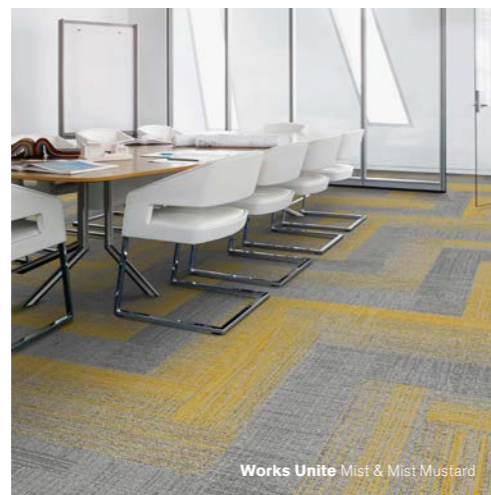




Works Unite Mist & Mist Teal



Works Unite Mist & Mist Lime



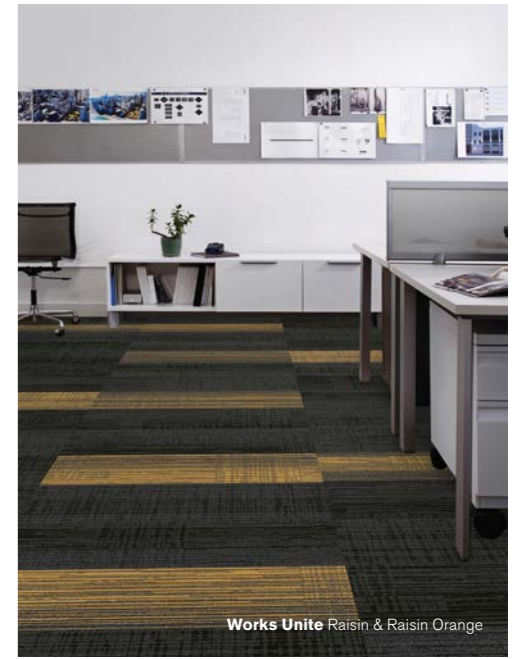
Works Unite Mist & Mist Mustard



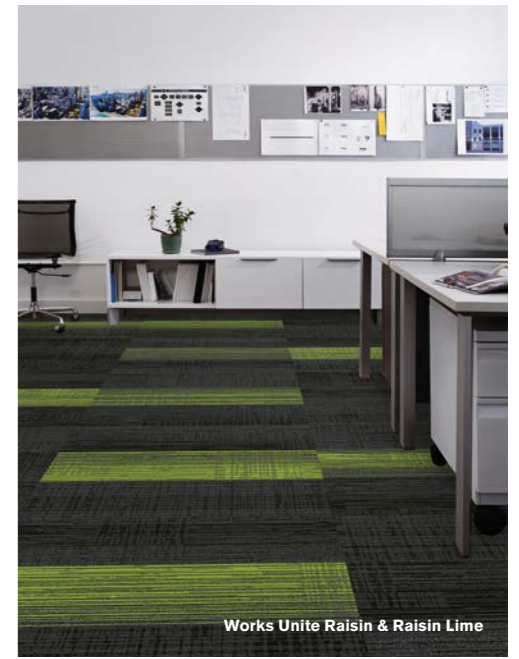
Works Unite Mist & Mist Orange



Works Unite Raisin & Raisin Orange



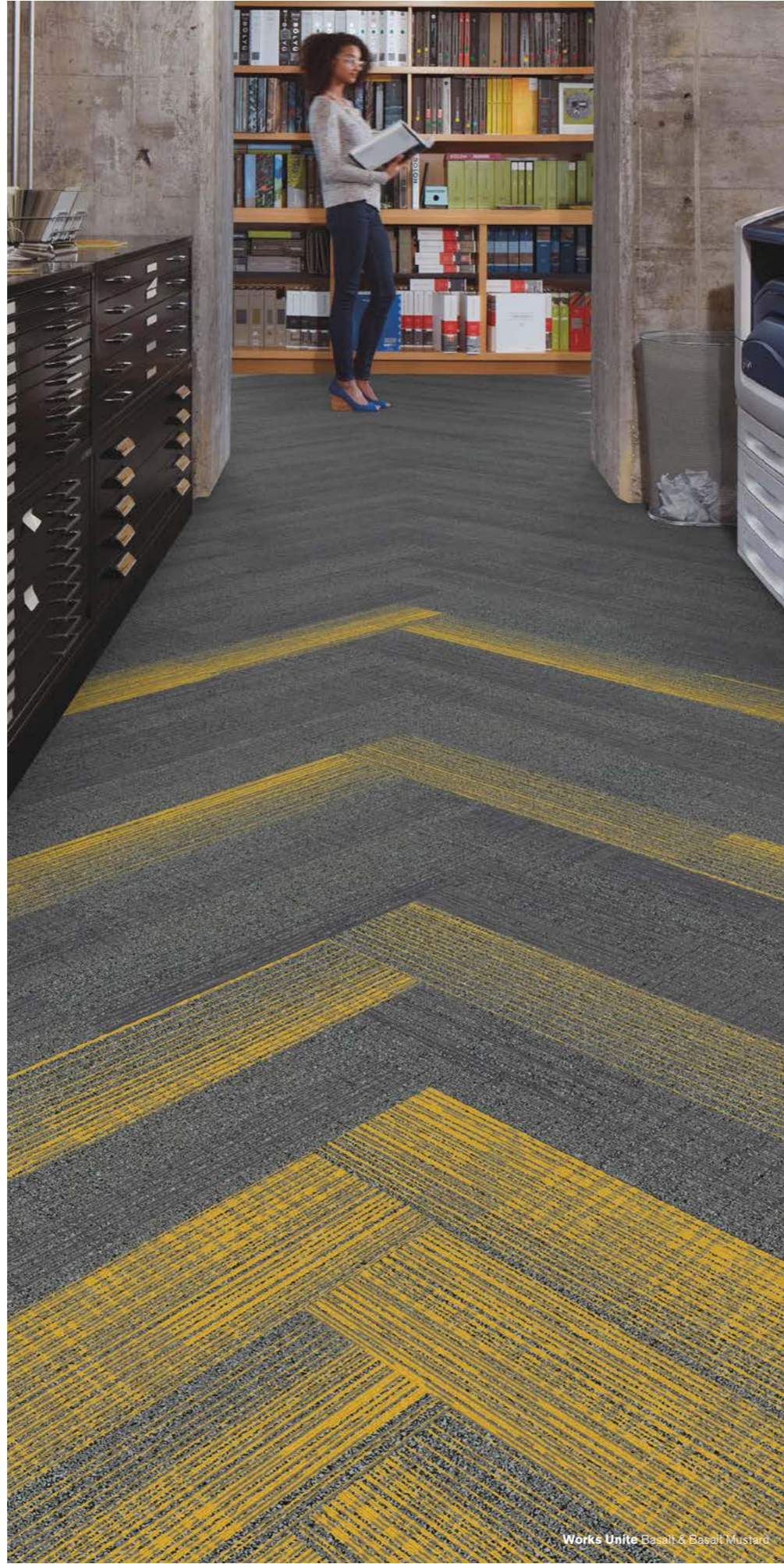
Works Unite Raisin & Raisin Orange



Works Unite Raisin & Raisin Lime



Works Unite Raisin & Raisin Teal





Works Unite Raisin & Raisin Lime



Works Unite Raisin & Raisin Mustard



Works Unite Raisin & Raisin Orange



Works Unite Raisin & Raisin Teal



Works Unite Basalt & Basalt Orange



Works Unite Mist & Mist Teal



Works Unite Mist & Mist Lime

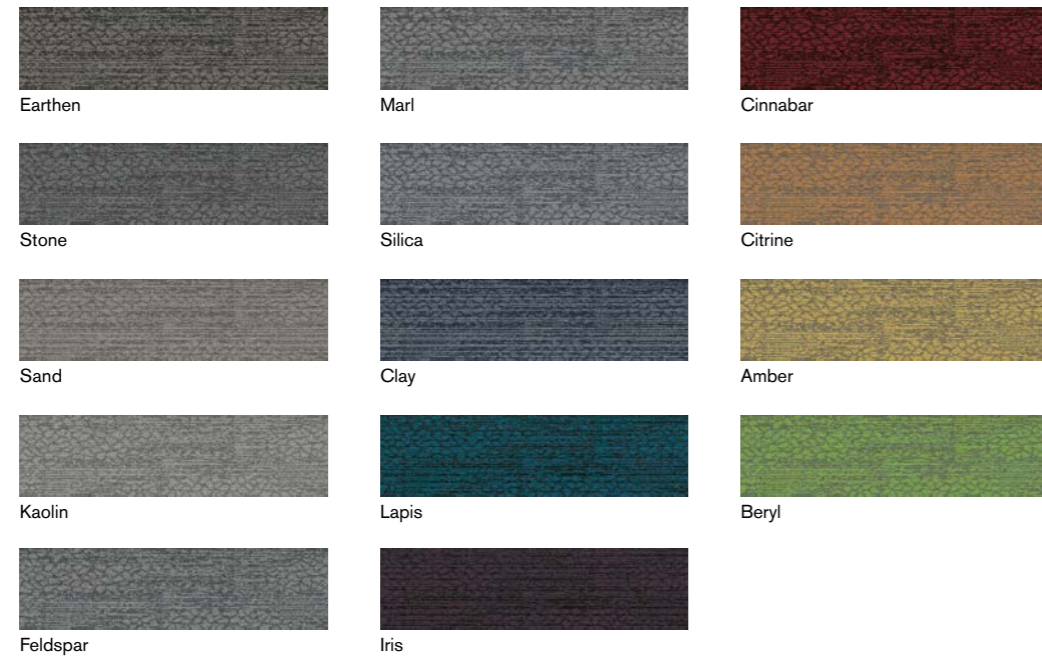


Works Unite Basalt & Basalt Mustard

Coarse Change™ Collection

Etch

Coarse Change is a collection of three products designed to explore the textural nature of ceramics. Etch, inspired by the firing process that fuses materials together to create a new form, allowing organic and linear patterns to blend together.



Product Construction Tufted Textured Loop
 Yarn/Fibre 100% Solution Dyed Nylon
 Machine Gauge 1/12
 Pile Thickness 2.0mm
 Total Thickness 5.0mm
 Tile Size 25cm X 100cm
 Area of Use Commercial - Heavy Use
 Installation Method Ashlar





Etch Earthen



Etch Stone



Etch Sand



Etch Kaolin



Etch Feldspar



Etch Marl



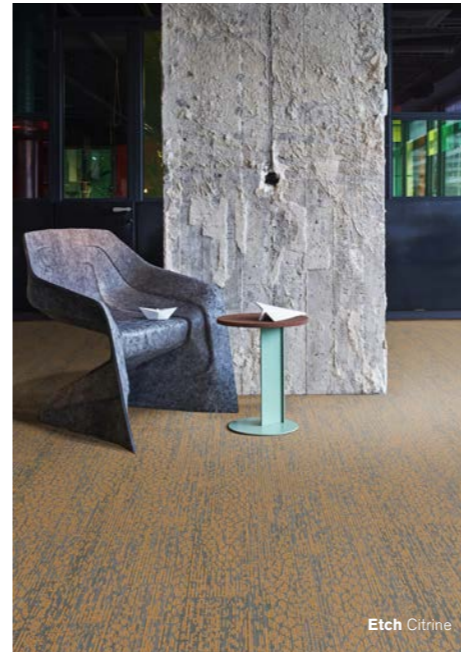
Etch Silica



Etch Clay



Etch Earthen
Facet Earthen



Coarse Change™ Collection

Facet

Stimulate the senses by creating an environment full of liveliness and curiosity. Encouraging a tactile experience, to feel the urge to explore your surroundings.

Facet, is an organic pattern that reveals how ceramics crack to create fine, delicate lines. that carve out new shapes and transform the coarse veneer.



Product Construction Tufted Textured Loop
 Yarn/Fibre 100% Solution Dyed Nylon
 Machine Gauge 1/12
 Pile Thickness 2.0mm
 Total Thickness 5.0mm
 Tile Size 25cm X 100cm
 Area of Use Commercial - Heavy Use
 Installation Method Ashlar





Facet Earthen



Facet Stone



Facet Sand



Facet Kaolin



Facet Feldspar



Facet Marl



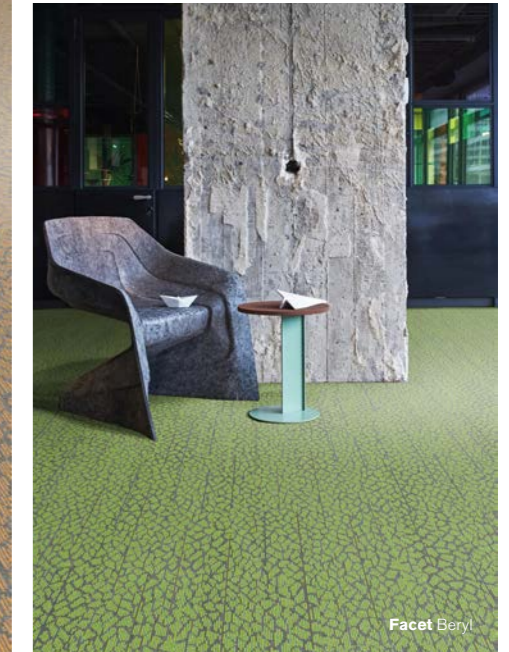
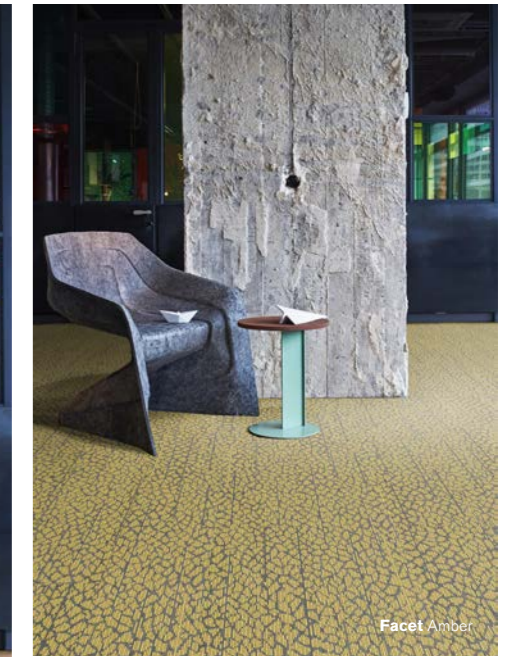
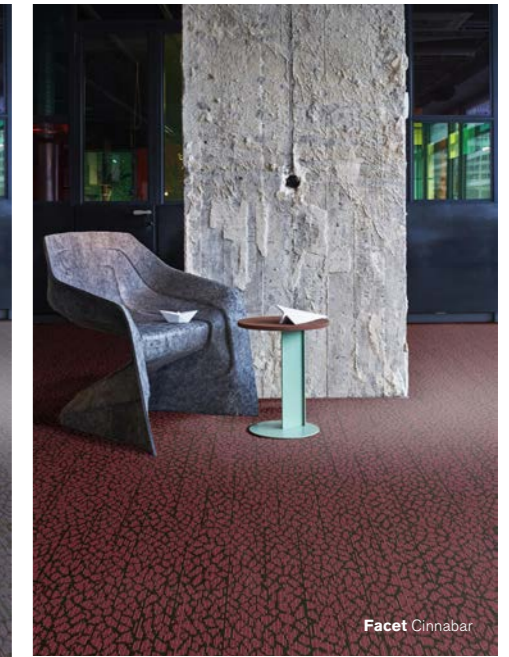
Facet Silica



Facet Clay



Facet Beryl
Trace Kaolin & Marl



Coarse Change™ Collection

Trace

Trace uses fragmented lines to show movement and flow, exploring how clay can be manipulated and sculpted, creating multiple design possibilities.



Product Construction Tufted Textured Loop
Yarn/Fibre 100% Solution Dyed Nylon
Machine Gauge 1/12
Pile Thickness 2.0mm
Total Thickness 5.0mm
Tile Size 25cm X 100cm
Area of Use Commercial - Heavy Use
Installation Method Ashlar





Trace Earthen



Trace Stone



Trace Sand



Trace Kaolin



Trace Feldspar



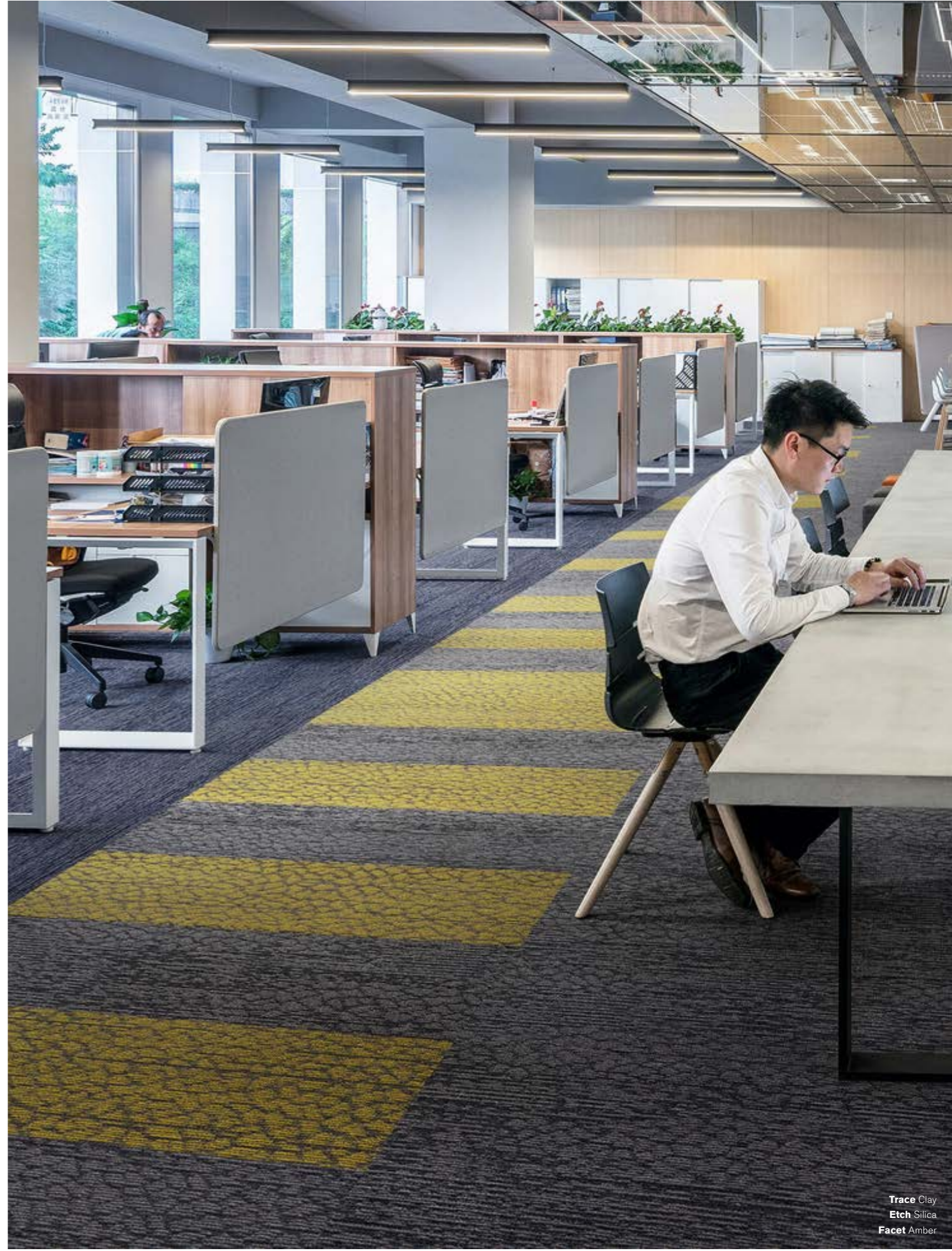
Trace Marl



Trace Silica



Trace Clay



Trace Clay
Etch Silica
Facet Amber



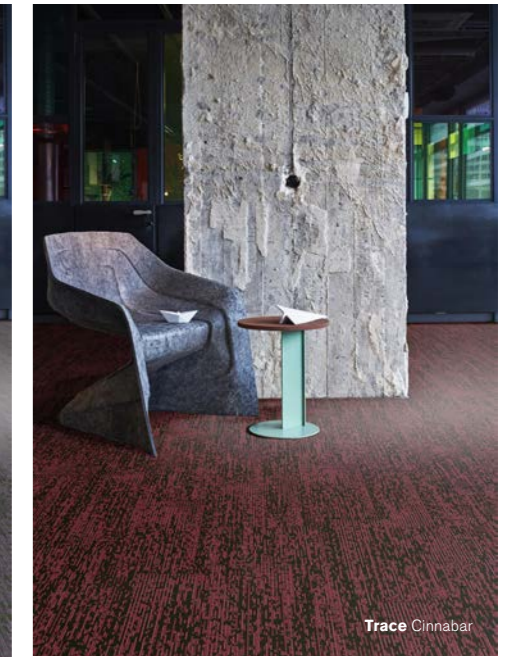
Facet Stone
Trace Stone
norament® 926 arago 5176



Trace Lapis



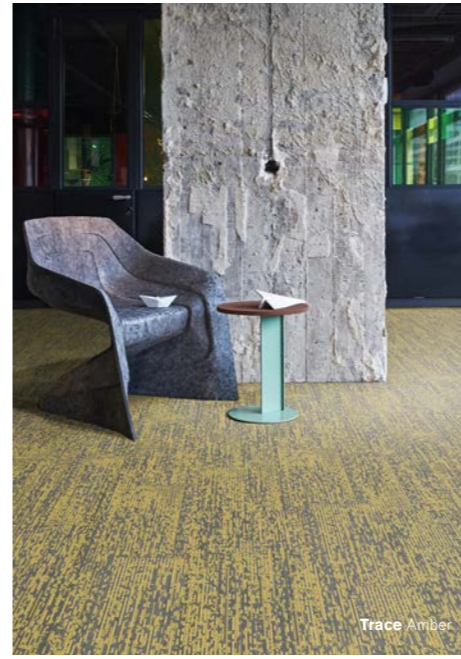
Trace Iris



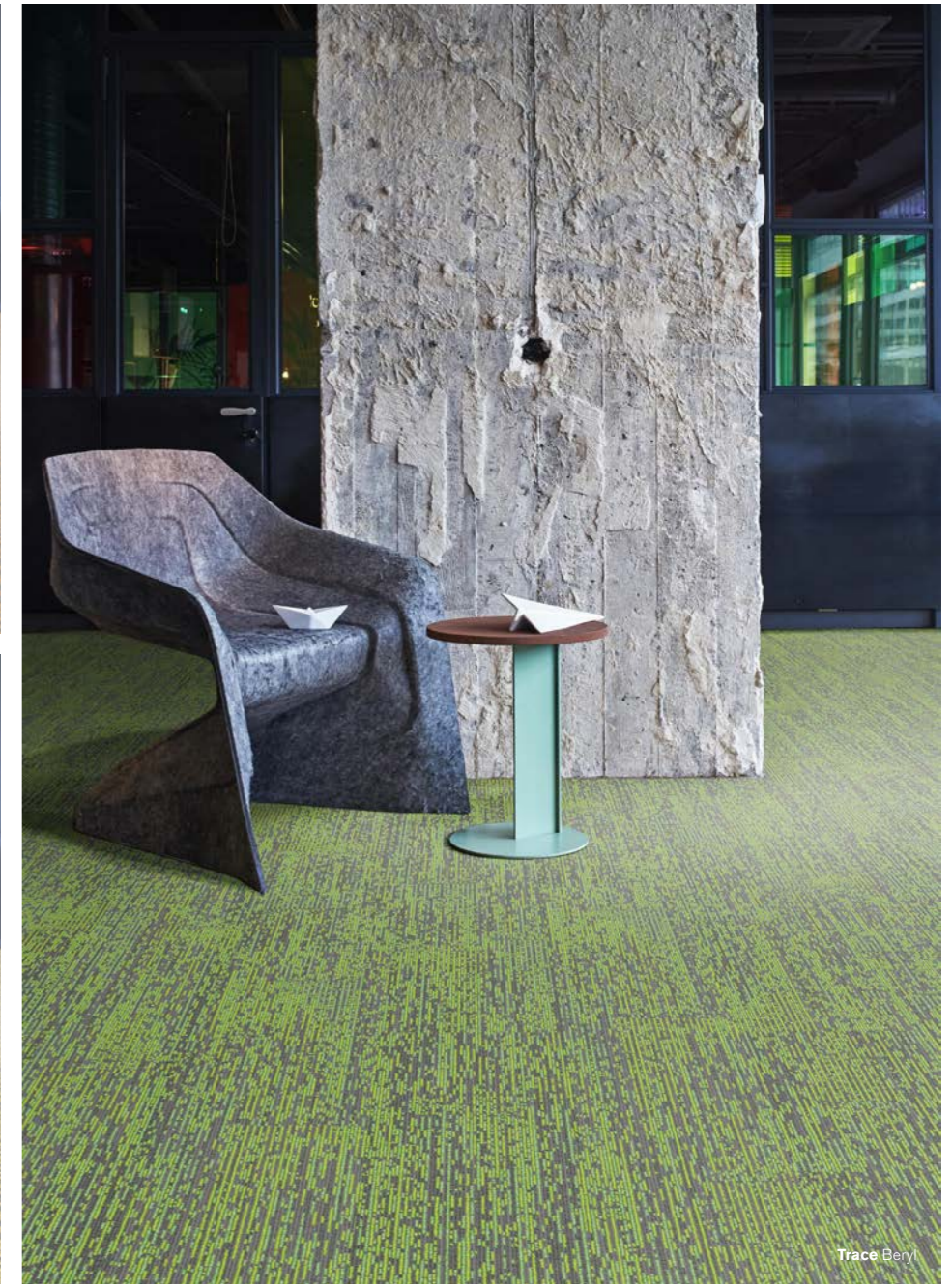
Trace Cinnabar



Trace Citrine



Trace Amber



Trace Beryl

Steady Stride™ Collection

A shrewd balance of design and performance, the Steady Stride™ Collection features a core group of LVT designs that you'll come back to again and again. Steady Stride Woodgrains introduce a slimmer dimension on the floor with its 12.5cm x 1m planks, while its classic Steady Stride Concretes come in our standard 50cm x 50cm square format.

Steady Stride™ Woodgrains



Biscuit



Bristle



Blonde



Copper Coin

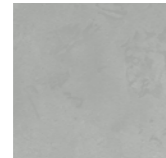


Elm

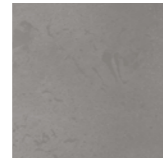


Mocha

Steady Stride™ Concretes



Dove



Iron

Product Construction

Classification

Wear Layer Thickness

Total Thickness

Finish

Nominal Dimensions (Steady Stride Woodgrains)

Nominal Dimensions (Steady Stride Concretes)

Indoor Air Quality

Environmental Certifications

Carbon Offsets

Reclamation

Warranty

Installation Method (Steady Stride Woodgrains)

Luxury Vinyl Tile

ASTM F1700 Class III Printed Vinyl Tile

0.5 mm

3.0 mm

Ceramic Coating

12.5cm x 1m

50cm x 50cm

GREENGUARD® Gold, FloorScore®, CDPH 01350 Certified for low VOC emissions

GreenTag Green Rate Level A, NSF/ANSI 332 Silver

Carbon Neutral Floors™

Recyclable through ReEntry®

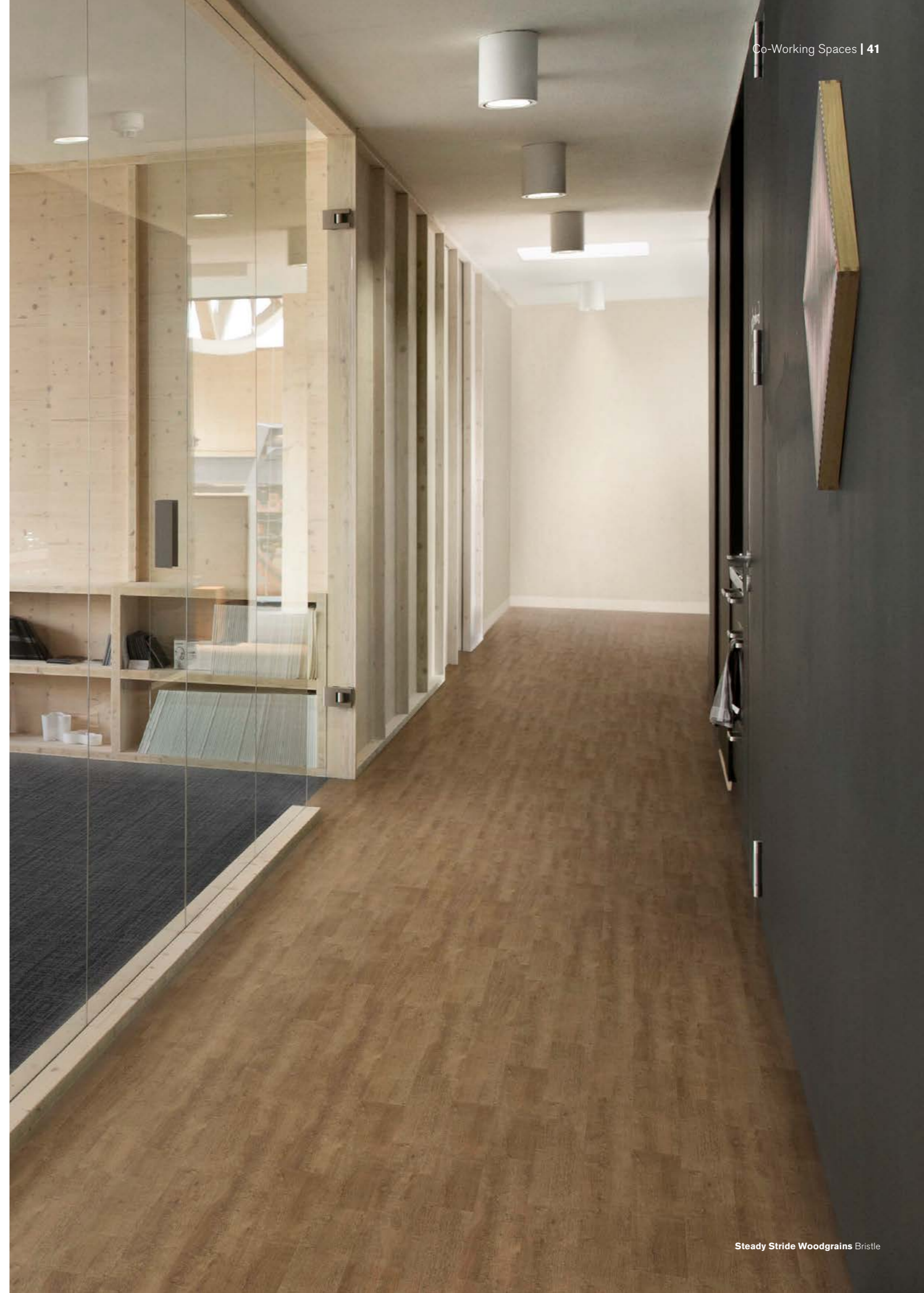
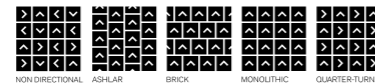
10 Year Standard LVT Product Warranty

Ashlar, Herringbone



Installation Method (Steady Stride Concretes)

Non-Directional, Ashlar, Brick, Monolithic, Quarter-Turn





Steady Stride Concretes Iron



Steady Stride Woodgrains Elm



Steady Stride Woodgrains Copper



Steady Stride Woodgrains Bristle



Steady Stride Concretes Dove



Carbon Neutral Floors™

www.interface.com

Australia

Interface Australia
local toll free: 1800 804 361

India

Interface India
tel: +91 80 4613 1313

South East Asia

Interface Asia
tel: +65 6478 1510

South Korea

Interface South Korea
tel: +82 2 555 1734

Japan

Interface Japan
tel: +81 3 5733 5211

Beijing

Interface China
tel: +86 10 6590 7810

Hong Kong

Interface China
tel: +852 2802 0838

Shanghai

Interface China
tel: +86 21 6340 3868

www.interface.com



Climate change is undeniable. And reversible. Our mission is to prove it.
Join the #ClimateTakeBack and help create a climate fit for life.