

# World Woven One

Interface®

World Woven™ One

In Interface studios around the world, designers work together to decipher trend and interpret it through the lens of local textile histories – from Japan to the UK, the Americas to Australia. In this process, one thing becomes very clear: the most elegant solutions are often the simplest. World Woven Collection™, the 2016 addition to our global library of styles, is deeply influenced by this lesson.

Uncomplicated, hand crafted and imperfect are often the terms of beauty today. In a way, this seems more authentic and more accessible. Familiar objects conjure a sense of security, comfort and well-being. The World Woven Collection draws heavily from textile patterns and woven structures that embody all these things.

At the core of the collection are four patterns that were inspired by classic woolen textiles, rooted in the traditions of plain woven fabrics made for fashion, upholstery and home accessories that are still so essential today. The colors recall undyed wools with just a bit of contrast.

To complement this carefully curated set, are two color studies – one soft, less manicured and one flat and orderly. Following nature's method, each is comprised of many hues mingled together to create a more vivid rendering of color.

For the first time, we've attached three accent styles, designed especially for the World Woven Collection. Collins Cottage™ and Scottish Sett™ revive the noble houndstooth and plaid while Mod Café™ renews the playful and optimistic patterns of the 1950s. These complimentary patterns can be included in a floor composition to define space, create area rugs or combine with the balance of the collection to add interest and detail.

World Woven Collection is six Skinny Planks™ and three accent styles, each with 8 colors and made with 100% recycled content nylon. All nine styles weave together our current predilections with memories we share of some of the most enduring textiles of the past. They are simple, elegant fabrics that keep us warm and lift our spirits.







[www.interface.com](http://www.interface.com)

PRODUCT WW870 COLOURS LINEN WEFT, FLANNEL WEFT INSTALLED PATTERN BY TILE



PRODUCT WW880 COLOUR BLACK LOOM  
PRODUCT WW890 COLOUR RAFFIA DOBBY INSTALLED PATTERN BY TILE





PRODUCT WW890 COLOUR NATURAL DOBEY INSTALLED ASILAR



[www.interface.com](http://www.interface.com)

PRODUCT WW880 COLOUR NATURAL LOOM  
PRODUCT SCOTTISH SETT™ COLOUR PLAID NATURAL INSTALLED PATTERN BY TILE



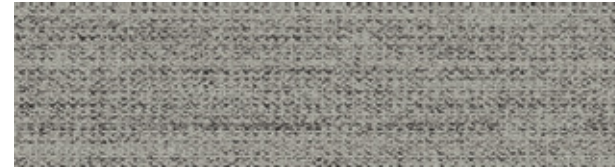
STERLING AND FRANCINE CLARK  
ART INSTITUTE  
OPENED MAY 17, 1993



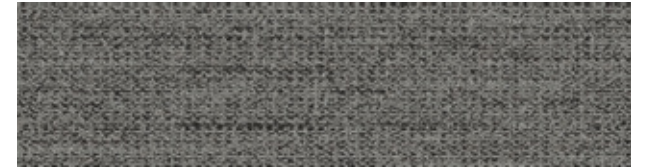
PRODUCT WW870 COLOUR FLANNEL WEFT INSTALLED PATTERN BY TILE

## WW870 Colourline

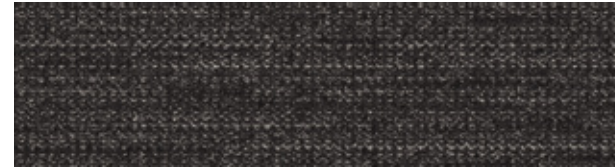
---



8111-001-000 Linen Weft



8111-002-000 Flannel Weft



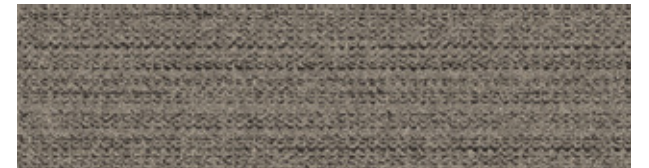
8111-003-000 Charcoal Weft



8111-004-000 Black Weft



8111-005-000 Brown Weft



8111-006-000 Natural Weft



8111-007-000 Raffia Weft



8111-008-000 Sisal Weft



PRODUCT WW880 COLOUR NATURAL LOOM INSTALLED ASHLAR

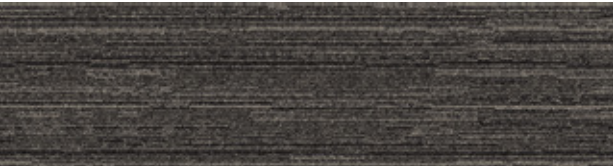
WW880 Colourline



8112-001-000 Linen Loom



8112-002-000 Flannel Loom



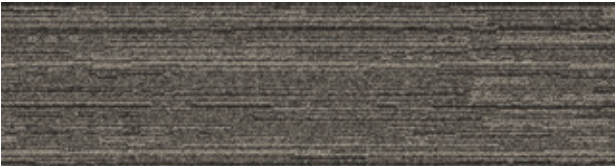
8112-003-000 Charcoal Loom



8112-004-000 Black Loom



8112-005-000 Brown Loom



8112-006-000 Natural Loom



8112-007-000 Raffia Loom



8112-008-000 Sisal Loom

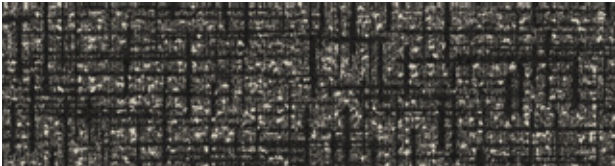
WW890 Colourline



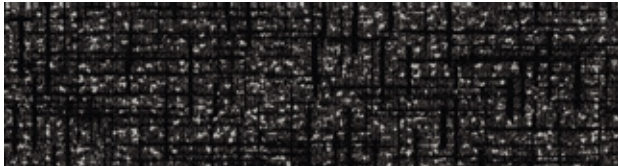
8113-001-000 Linen Dobby



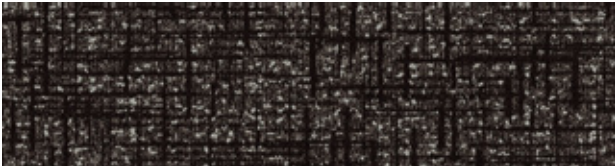
8113-002-000 Flannel Dobby



8113-003-000 Charcoal Dobby



8113-004-000 Black Dobby



8113-005-000 Brown Dobby



8113-006-000 Natural Dobby



8113-007-000 Raffia Dobby



8113-008-000 Sisal Dobby



PRODUCT WW890 COLOUR RAFFIA DOBBY INSTALLED ASHLAR





PRODUCT WW890 COLOUR LINEN DOBBY INSTALLED ASHLAR  
PRODUCT MOD CAFE™ COLOUR STAR CHARCOAL INSTALLED MONOLITHIC

[www.interface.com](http://www.interface.com)



PRODUCT WW865 COLOUR FUCHSIA WARP  
PRODUCT WW880 COLOUR BROWN LOOM INSTALLED PATTERN BY TILE

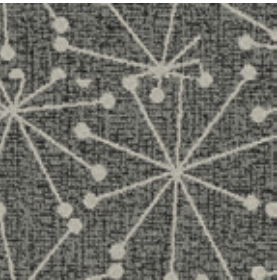




Mod Café™ Colourline



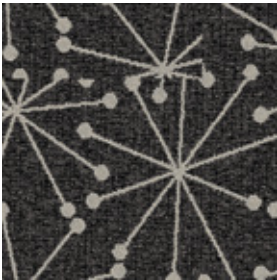
8150-001-000 Star Linen



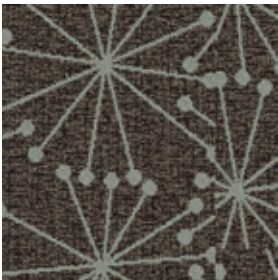
8150-002-000 Star Flannel



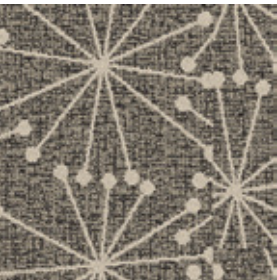
8150-003-000 Star Charcoal



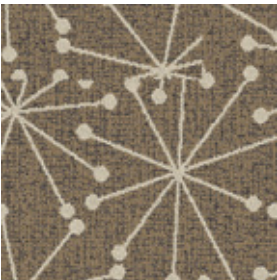
8150-004-000 Star Black



8150-005-000 Star Brown



8150-006-000 Star Natural



8150-007-000 Star Raffia

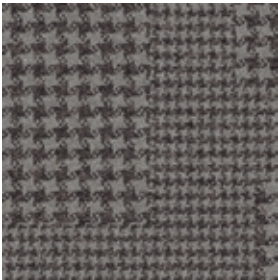


8150-008-000 Star Sisal

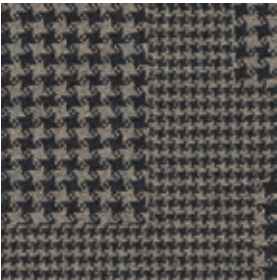
Collins Cottage™ Colourline



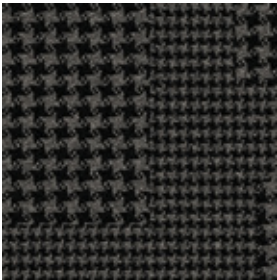
8152-001-000 Hound Linen



8152-002-000 Hound Flannel



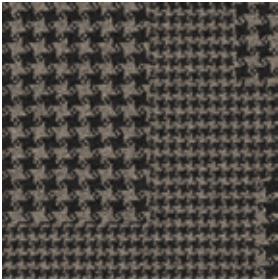
8152-003-000 Hound Charcoal



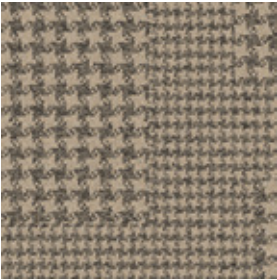
8152-004-000 Hound Black



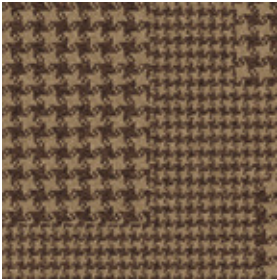
8152-005-000 Hound Brown



8152-006-000 Hound Natural

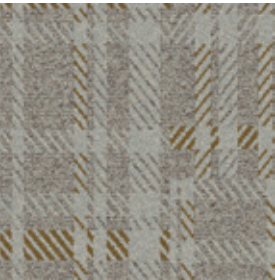


8152-007-000 Hound Raffia

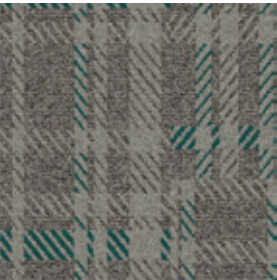


8152-008-000 Hound Sisal

Scottish Sett™ Colourline



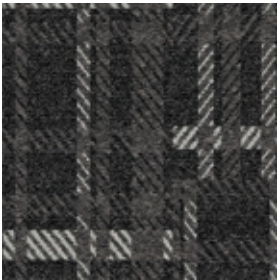
8151-001-000 Plaid Linen



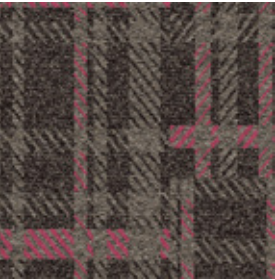
8151-002-000 Plaid Flannel



8151-003-000 Plaid Charcoal



8151-004-000 Plaid Black



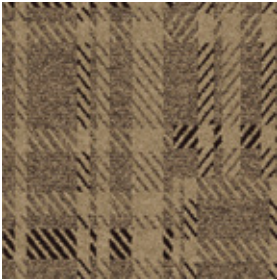
8151-005-000 Plaid Brown



8151-006-000 Plaid Natural

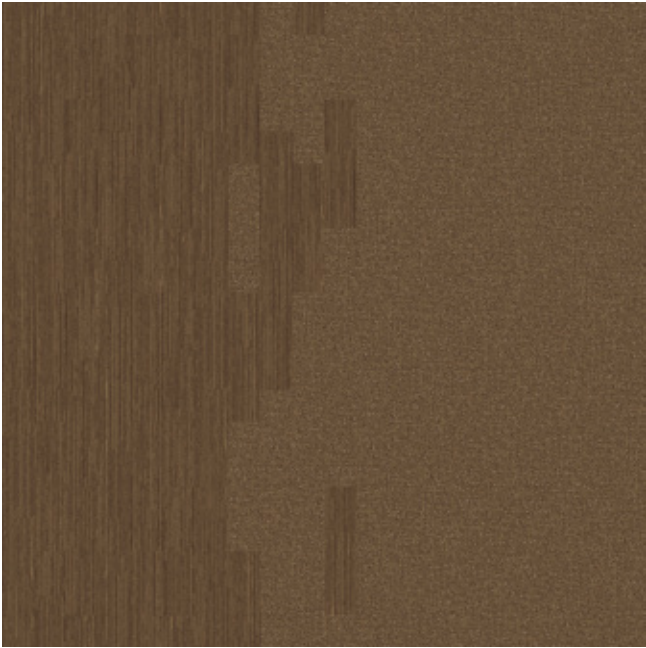


8151-007-000 Plaid Raffia

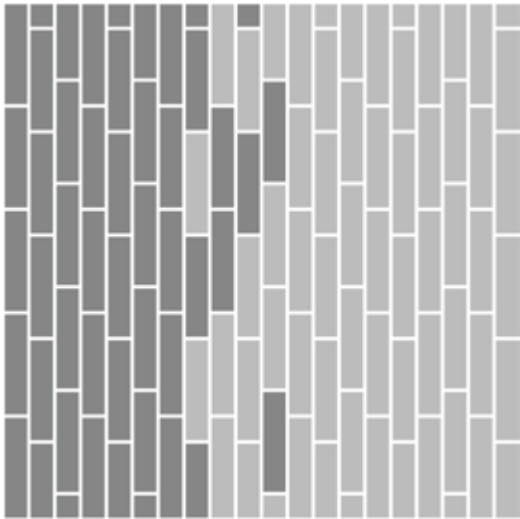


8151-008-000 Plaid Sisal

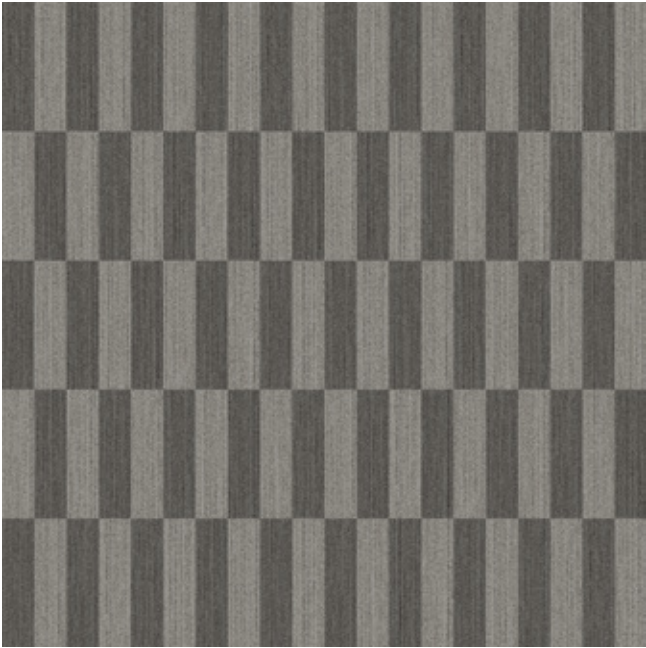
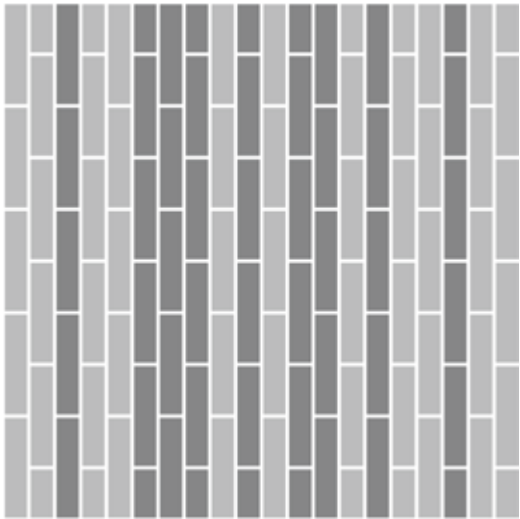
Design Ideas Below are floor layouts showing how to create the design ideas shared in several of the images featured in this brochure.



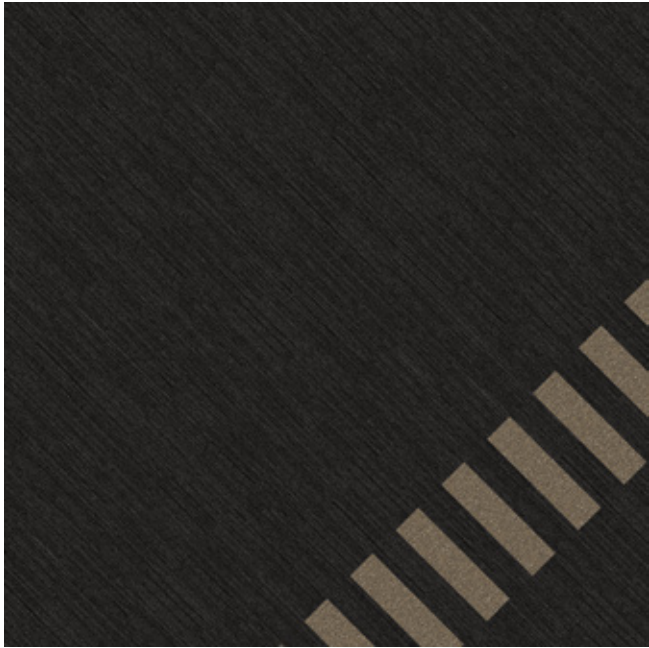
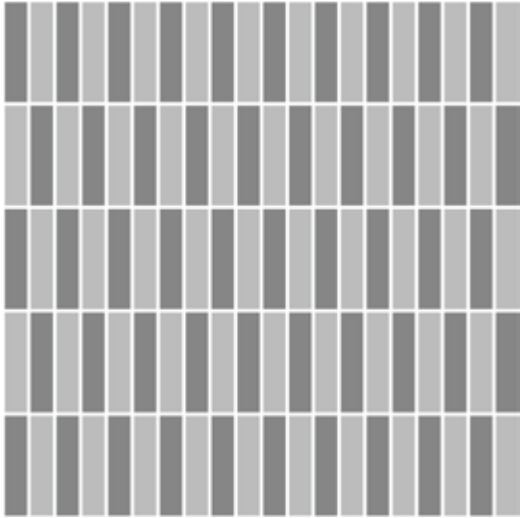
PRODUCT WW880 COLOUR SISAL LOOM  
PRODUCT WW890 COLOUR SISAL DOBBY INSTALLED PATTERN BY TILE



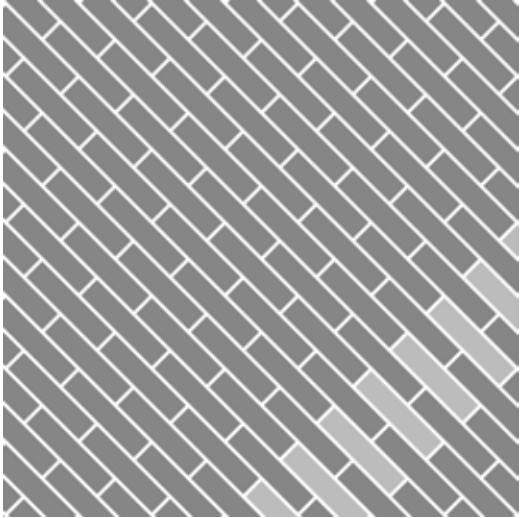
PRODUCT WW880 COLOUR LINEN LOOM  
PRODUCT WW890 COLOUR CHARCOAL DOBBY INSTALLED ASHLAR



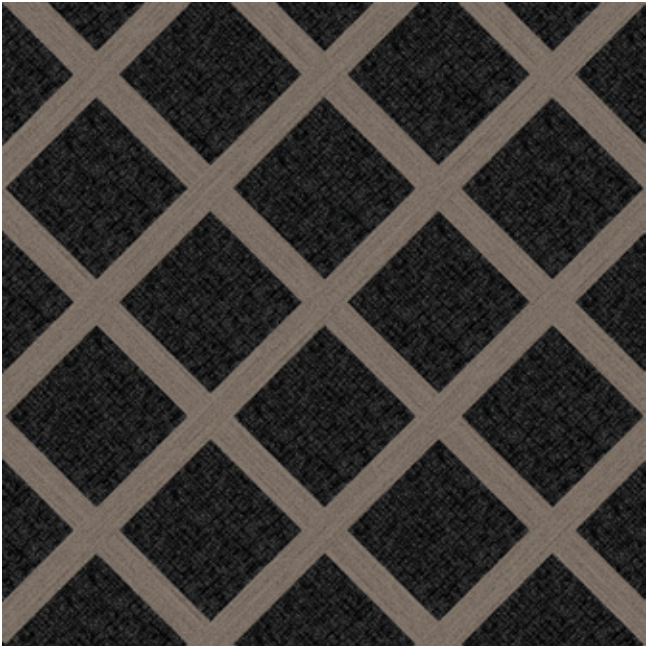
PRODUCT WW870 COLOURS LINEN WEFT, FLANNEL WEFT  
INSTALLED PATTERN BY TILE



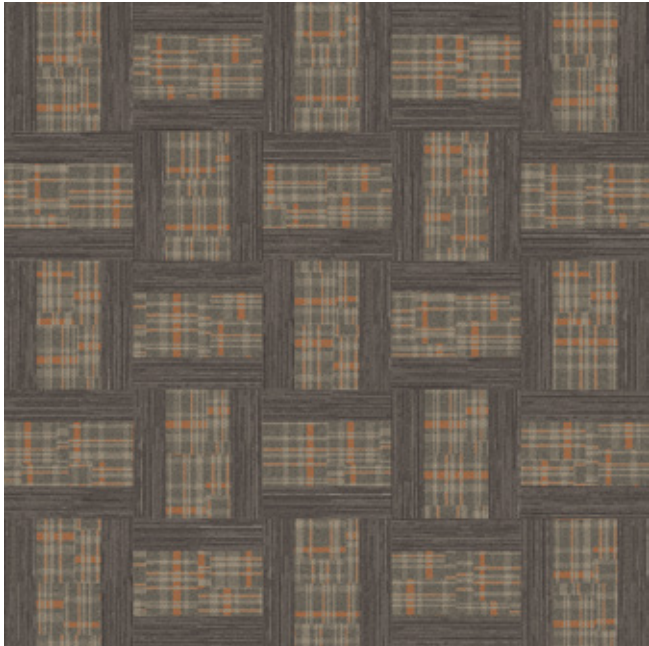
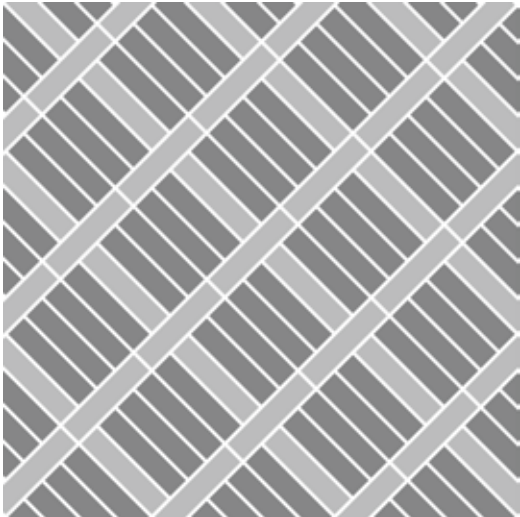
PRODUCT WW880 COLOUR BLACK LOOM  
PRODUCT WW890 COLOUR RAFFIA DOBBY INSTALLED PATTERN BY TILE



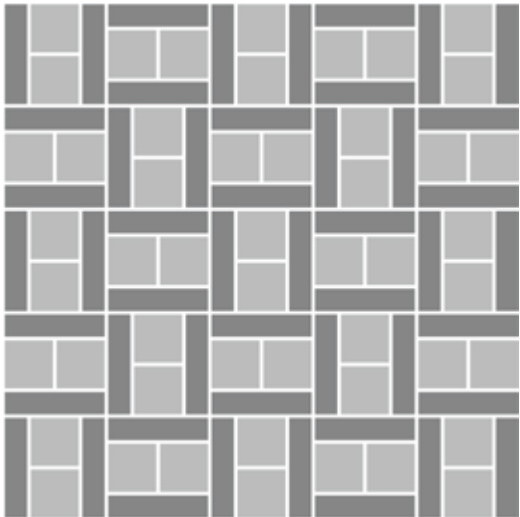
Design Ideas Below are floor layouts showing how to create the design ideas shared in several of the images featured in this brochure.



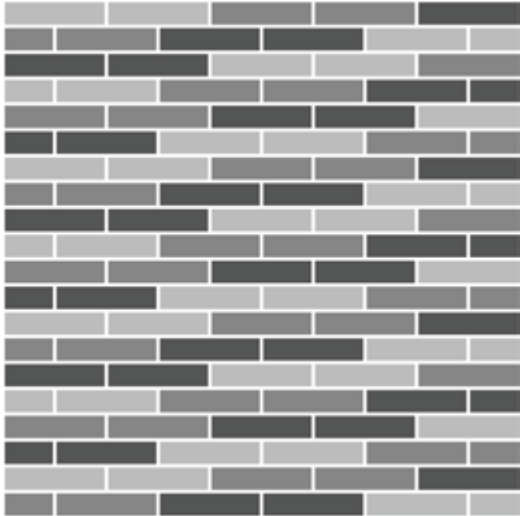
**PRODUCT** WW890 **COLOURS** BLACK DOBBY, NATURAL DOBBY  
**INSTALLED** PATTERN BY TILE



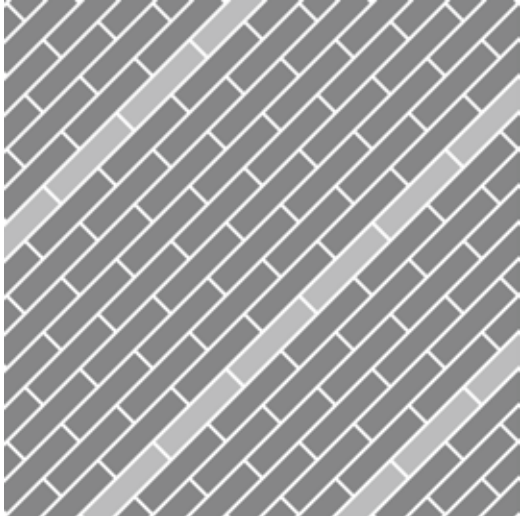
**PRODUCT** WW880 **COLOUR** NATURAL LOOM  
**PRODUCT** SCOTTISH SETT **COLOUR** PLAID NATURAL **INSTALLED** PATTERN BY TILE



**PRODUCT** WW870 **COLOURS** BROWN WEFT, SISAL WEFT  
**PRODUCT** WW895 **COLOUR** GLEN WEAVE **INSTALLED** ASHLAR



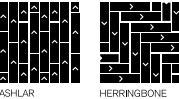
**PRODUCT** WW865 **COLOUR** FUCHSIA WARP  
**PRODUCT** WW880 **COLOUR** BROWN LOOM **INSTALLED** PATTERN BY TILE



Specifications

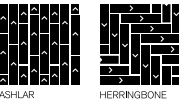
WW870™

Style Code	8111 Pattern 000
Product Construction	Tufted textured Loop
Yarn System	100% Recycled Solution Dyed Nylon
Machine Gauge	1/12
Pile Thickness	3.0mm +/- 0.5mm
Total Thickness	6.5mm +/- 0.5mm
Tile Size	25cm x 100cm
Area of Use	Commercial – Heavy Use
Lifetime Antimicrobial	Intersept®
Soil/Stain Protection	Protekt <sup>2</sup> ®
Installation Methods	Ashlar, Herringbone



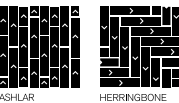
WW880™

Style Code	8112 Pattern 000
Product Construction	Tufted Tip Sheared Loop
Yarn System	100% Recycled Solution Dyed Nylon
Machine Gauge	1/10
Pile Thickness	4.0mm +/- 0.5mm
Total Thickness	7.5mm +/- 0.5mm
Tile Size	25cm x 100cm
Area of Use	Commercial – Heavy Use
Lifetime Antimicrobial	Intersept®
Soil/Stain Protection	Protekt <sup>2</sup> ®
Installation Methods	Ashlar, Herringbone



WW890™

Style Code	8113 Pattern 000
Product Construction	Tufted textured Loop
Yarn System	100% Recycled Solution Dyed Nylon
Machine Gauge	1/10
Pile Thickness	3.5mm +/- 0.5mm
Total Thickness	7.5mm +/- 0.5mm
Tile Size	25cm x 100cm
Area of Use	Commercial – Heavy Use
Lifetime Antimicrobial	Intersept®
Soil/Stain Protection	Protekt <sup>2</sup> ®
Installation Methods	Ashlar, Herringbone



Specifications

Mod Café™

Style Code	8150 Pattern 000
Product Construction	Tufted textured Loop
Yarn System	100% Recycled Solution Dyed Nylon
Machine Gauge	1/10
Pile Thickness	4.5mm +/- 0.5mm
Total Thickness	8.0mm +/- 0.5mm
Tile Size	50cm x 50cm
Area of Use	Commercial – General Use
Lifetime Antimicrobial	Intersept®
Soil/Stain Protection	Protekt <sup>2</sup> ®
Installation Methods	Monolithic



Collins Cottage™

Style Code	8152 Pattern 000
Product Construction	Tufted textured Loop
Yarn System	100% Recycled Solution Dyed Nylon
Machine Gauge	1/10
Pile Thickness	4.0mm +/- 0.5mm
Total Thickness	8.0mm +/- 0.5mm
Tile Size	50cm x 50cm
Area of Use	Commercial – General Use
Lifetime Antimicrobial	Intersept®
Soil/Stain Protection	Protekt <sup>2</sup> ®
Installation Methods	Non-directional



Scottish Sett™

Style Code	8151 Pattern 000
Product Construction	Tufted textured Loop
Yarn System	100% Recycled Solution Dyed Nylon
Machine Gauge	1/10
Pile Thickness	4.5mm +/- 0.5mm
Total Thickness	8.5mm +/- 0.5mm
Tile Size	50cm x 50cm
Area of Use	Commercial – General Use
Lifetime Antimicrobial	Intersept®
Soil/Stain Protection	Protekt <sup>2</sup> ®
Installation Methods	Non-directional



All Interface manufacturing facilities in the Asia Pacific region maintain registration to ISO 9001 Quality Management Systems and ISO 14001 Environmental Management Systems.

Production specifications are subject to normal manufacturing tolerances and may be changed without notice. Slight variation in colour among different production lots are normal and should be considered in the overall installation plan. Products covered by manufacturer's written warranty only. All other warranties, including without limitation any implied warranties of merchantability or fitness for particular purpose, are hereby disclaimed. Contact your representative for written warranty information.

**[www.interface.com](http://www.interface.com)**

**Australia**

Interface Australia  
local toll free: 1800 804 361

**India**

Interface India  
tel: +91 80 4613 1313

**South East Asia**

Interface Asia  
tel: +65 6478 1510

**South Korea**

Interface South Korea  
tel: +82 2 555 1734

**Japan**

Interface Japan  
tel: +81 3 5733 5211

**Beijing**

Interface China  
tel: +86 10 6590 7810

**Hong Kong**

Interface China  
tel: +852 2802 0838

**Shanghai**

Interface China  
tel: +86 21 6340 3868

02/2020  
SF0059T1



Climate change is undeniable. And reversible. Our mission is to prove it.  
**Join the #ClimateTakeBack and help create a climate fit for life.**