

As part of Interface's Mission Zero promise to eliminate any negative impact on the environment by 2020, we always consider the environment impact of every creative, manufacturing and building decision. This sample book is printed on recycled paper and with soy based ink. Twenty four virgin trees were saved from our use of 1725kg of recycled paper in the production of 5000 sample books. Energy intensity also decreased and greenhouse gases were reduced. The other reductions came from waste water and solid waste. Through our sample reclamation program, we help keep sample materials out of landfill by re-using them until it is time to recycle these sample materials.

www.interface.com

South East Asia

Interface Asia
tel: 65-6478 1510
www.interface.com

South Korea

tel: 82-2-555 1734
www.interface.com

Japan

Interface Japan
tel: 81-3-5733 5211
www.interface.com

India

Interface India
tel: 91 80 46131313
www.interface.com

Beijing Studio

Interface China
tel: 86-10-6590 7810
www.interface.com.cn

Hongkong Studio

Interface China
tel: 852-2802 0838
www.interface.com.cn

Shanghai Studio

Interface China
tel: 86-21-6340 3868
www.interface.com.cn

Australia

Interface Australia
local toll free: 1800 008 101
www.interface.com

08/2018
SF0110T0



Climate change is undeniable. And reversible. Our mission is to prove it.
Join the #ClimateTakeBack and help create a climate fit for life.

Studio Set | LVT



Interface®

Studio Set™

Every project is an opportunity for fresh ideas. Enter Studio Set. Thirteen hues selected to serve as your go-to source for colour in LVT. Studio Set is a spectrum of colours from super-saturated brights to ideal neutrals. Take note of the very subtle woodgrain pattern, but don't get stuck in conventional solutions. These Skinny Planks™ were meant to inspire you to design with pure colour, creating unique compositions or just making a singular bold choice, like a red floor.

Combine Studio Set with Interface carpet tiles side-by-side for an integrated flooring system of hard and soft tiles in Skinny Planks and squares. Interface modular floors allow you to move from surface to surface without the need for transition strips.

And, of course, we design all our products with the ability to feed our recycling program, ReEntry®. We're mindful of our commitment to continually minimize our environmental footprint.







LVT PRODUCT STUDIO SET COLOURS PEWTER, MANDARIN INSTALLED PATTERN BY TILE
CARPET PRODUCT AERIAL™ | NEIGHBORHOOD™ BLOCKS COLOUR PERSIMMON/BLOCKS INSTALLED ASHLAR
CARPET PRODUCT STEP REPEAT™ | SR799 COLOUR GRANITE INSTALLED QUARTER-TURN



PRODUCT STUDIO SET COLOURS PEWTER, SLATE INSTALLED PATTERN BY TILE



Specifications

Studio Set

Product Number	A007
Product Construction	High Performance Luxury Vinyl Plank
Wear Layer Thickness	0.55 mm
Total Thickness (Metric)	4.5 mm
Classification	EN 651 Class 33 (heavy contract) EN 651 Class 42 (light industrial general)
Acoustic Impact Noise Reduction	ISO 140.8 ΔL_w = 16dB
Finish	CERAMOR(tm) UV Stabilized Ceramic Bead Coating
Nominal Dimensions	25cm x 100cm

Performance Specifications

Critical Heat Flux	AS ISO 9239-1	>7kW/m²
Smoke Rate	AS ISO 9239-1	<750%.min
Size, Tolerance	ISO 24342	>400 mm < 0.35 mm
	ISO 24342	<400 mm < 0.25 mm
Dimensional Stability	ISO 23999	<0.25%
Thickness	ISO 24346	Average value + 0.20mm
Resistance to Light	ISO 105-B02	≥6
Resistance to Heat	ASTM F1514	ΔE < 8 avg Max
Resistance to Chemicals	EN-ISO 26987	Pass
Reaction to Fire	EN ISO 13501-1	Class BFI-S1
VOC Test	ISO 10580	Pass
Flexibility	ISO 24344 Method A	Pass
Static Load	ASTM F970	≤0.005" with 1500 psi
Castor chair	ISO 4918	Pass
Thermal Conductivity	EN 12667	0.16 W/mK
Static Electrical	EN 1815	<2kV
Slip Resistance	AS 4586:2014	R10

Environmental Specifications

Ingredients and Life Cycle Impacts	EPD for LVT
Sustainability Assessment	NSF/ANSI 332, Meets Certification Guidelines
LEED v4	Contributes to IEQ: Low Emitting Materials; M&R: EPD and EPR
End of Life	Fully Recyclable to carpet tile Backing Recycling

Technical Information

Installation	See Interface LVT Installation Guidelines online
Maintenance	See Interface LVT Maintenance Guidelines online
Reclamation	View details on our ReEntry® Program
Warranty	15 Year Standard LVT Product Warranty
Installation Methods	Ashlar, Herringbone



All product specifications reflect averages derived from product sample testing, are subject to normal manufacturing and testing tolerances and inherent pattern variances, and may be changed without notice. For more information about these and other important attributes of the product(s) described herein, including recycled content and product warranty information please see our full LVT product disclaimer.

Studio Set Colourline



A007-01 SILVERLIGHT



A007-02 PEWTER



A007-03 PEPPER



A007-04 ESPRESSO



A007-05 TITANIUM



A007-06 MUSHROOM



A007-07 LIME



A007-08 IRIS



A007-09 OCEAN



A007-10 POPPY



A007-11 MANDARIN

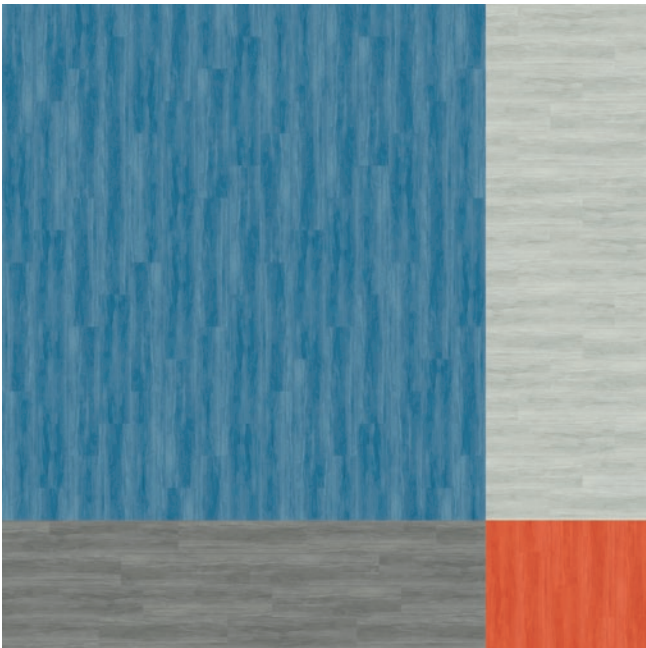


A007-12 MARIGOLD

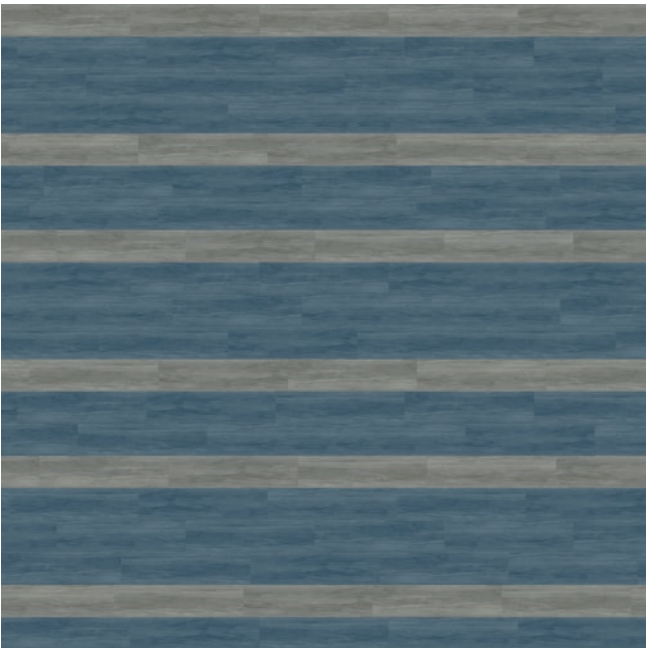
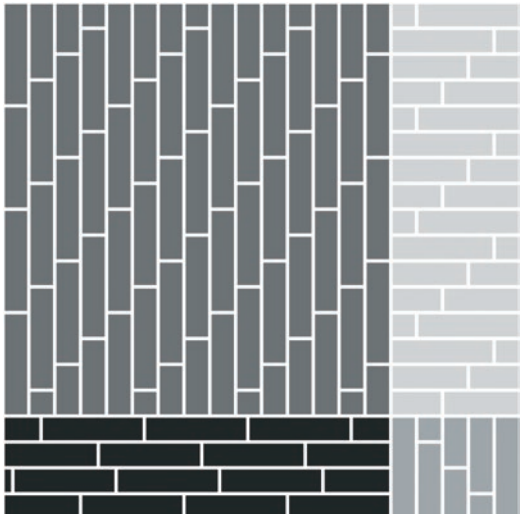


A007-13 SLATE

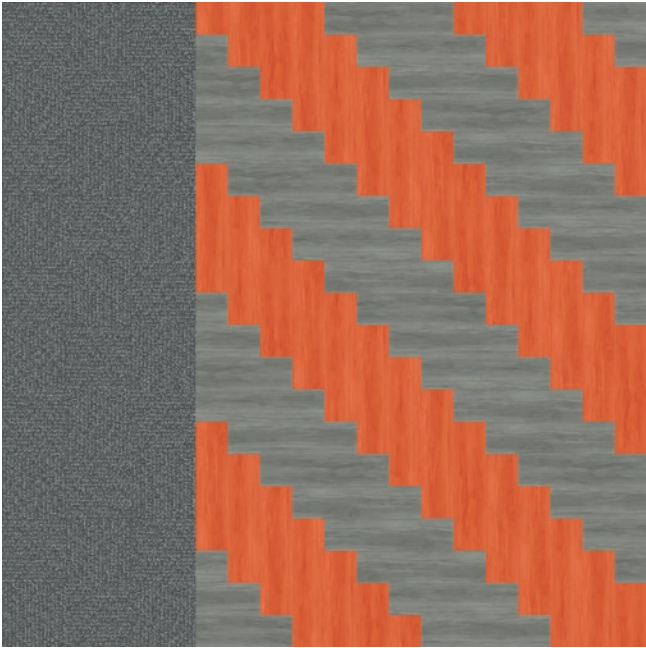
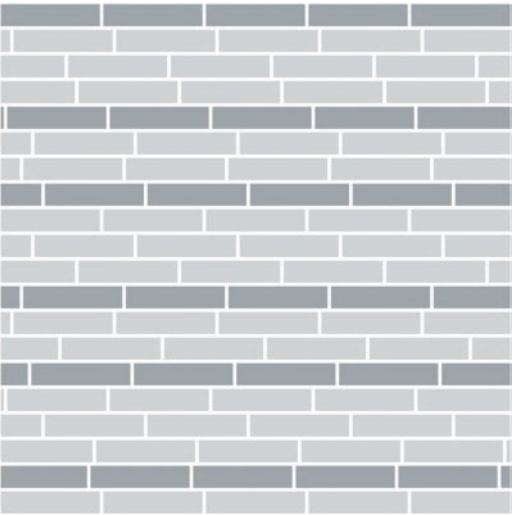
Design Ideas Below are floor layouts showing how to create the design ideas shared in several of the images featured in this brochure.



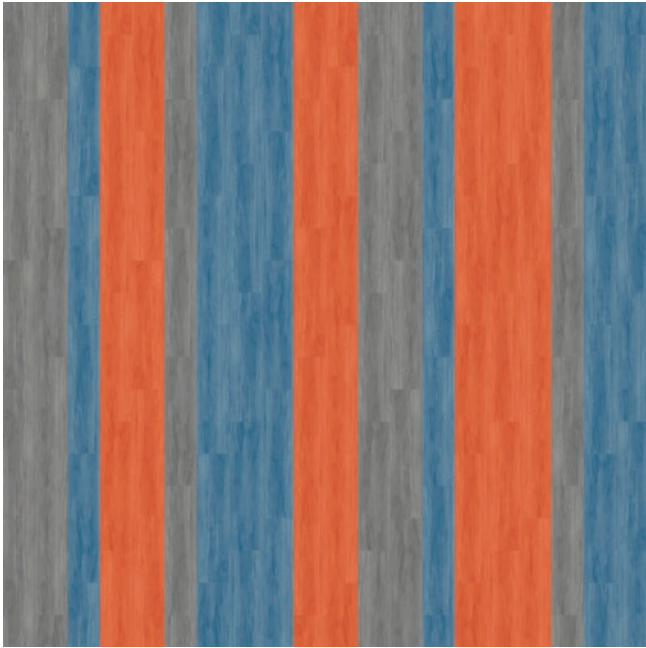
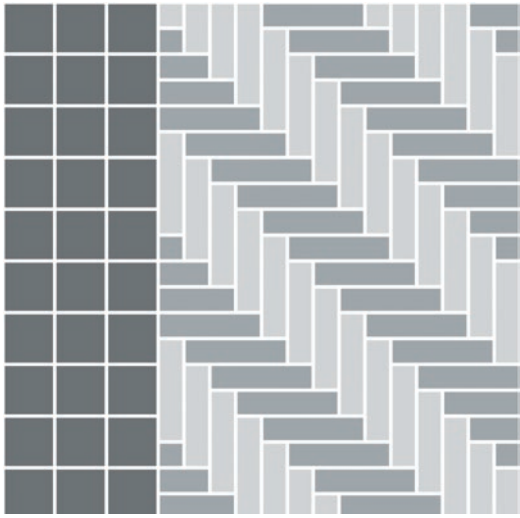
PRODUCT STUDIO SET **COLOURS** SILVERLIGHT, PEWTER, OCEAN, MANDARIN
INSTALLED PATTERN BY TILE (ASHLAR)



PRODUCT STUDIO SET **COLOURS** PEWTER, SLATE
INSTALLED PATTERN BY TILE (ASHLAR)



LVT PRODUCT STUDIO SET **COLOURS** PEWTER, MANDARIN
INSTALLED PATTERN BY TILE (HERRINGBONE) **CARPET PRODUCT** STEP REPEAT | SR799
COLOUR GRANITE **INSTALLED** QUARTER-TURN



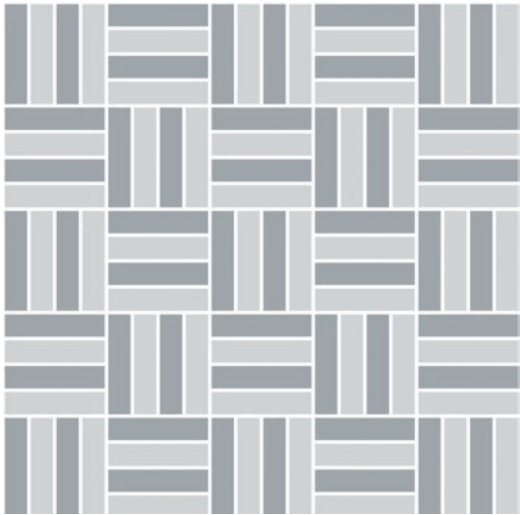
PRODUCT STUDIO SET **COLOURS** PEWTER, OCEAN, MANDARIN
INSTALLED PATTERN BY TILE (ASHLAR)



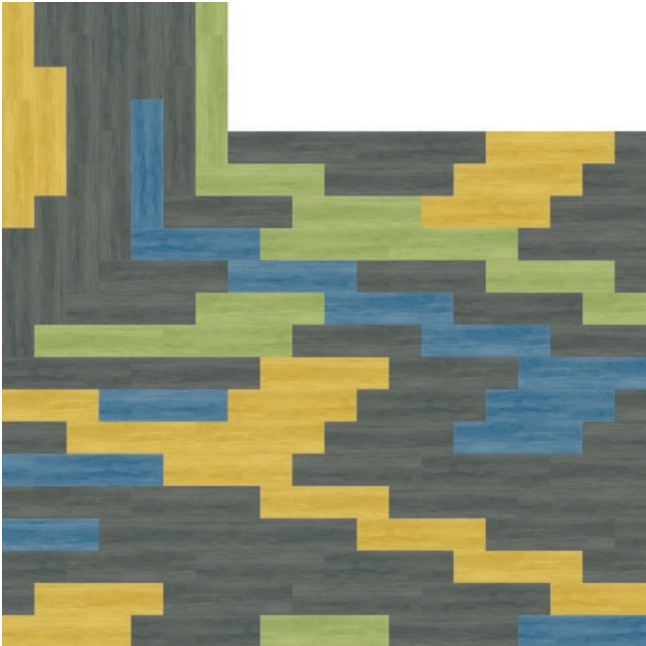
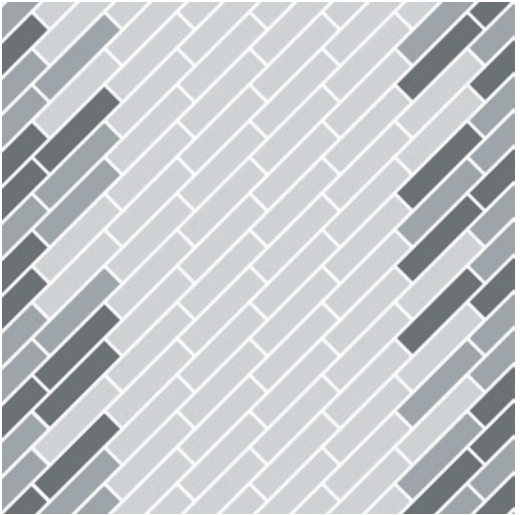
Design Ideas Below are floor layouts showing how to create the design ideas shared in several of the images featured in this brochure.



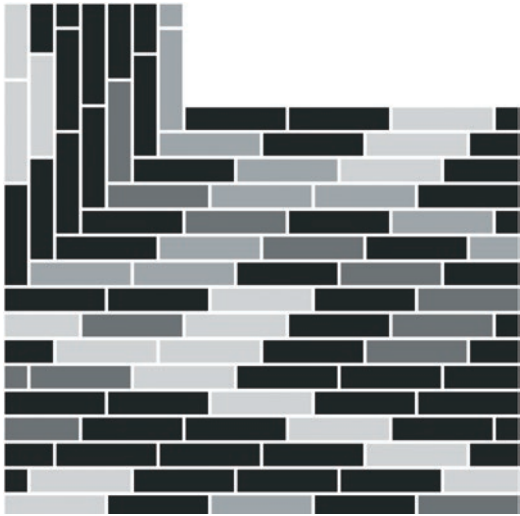
PRODUCT STUDIO SET COLOURS PEPPER, PEWTER INSTALLED PATTERN BY TILE



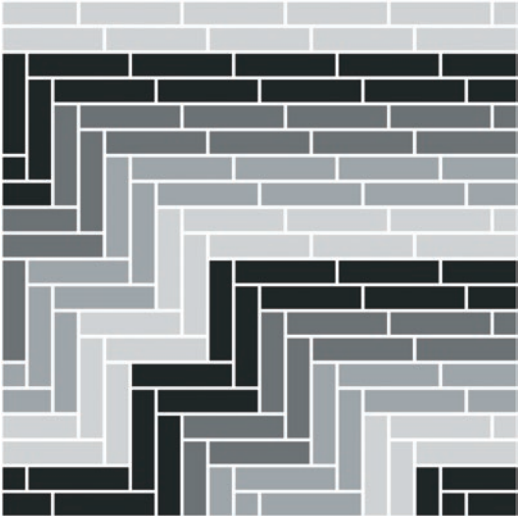
PRODUCT STUDIO SET COLOURS ESPRESSO, TITANIUM, POPPY
INSTALLED PATTERN BY TILE (ASHLAR)

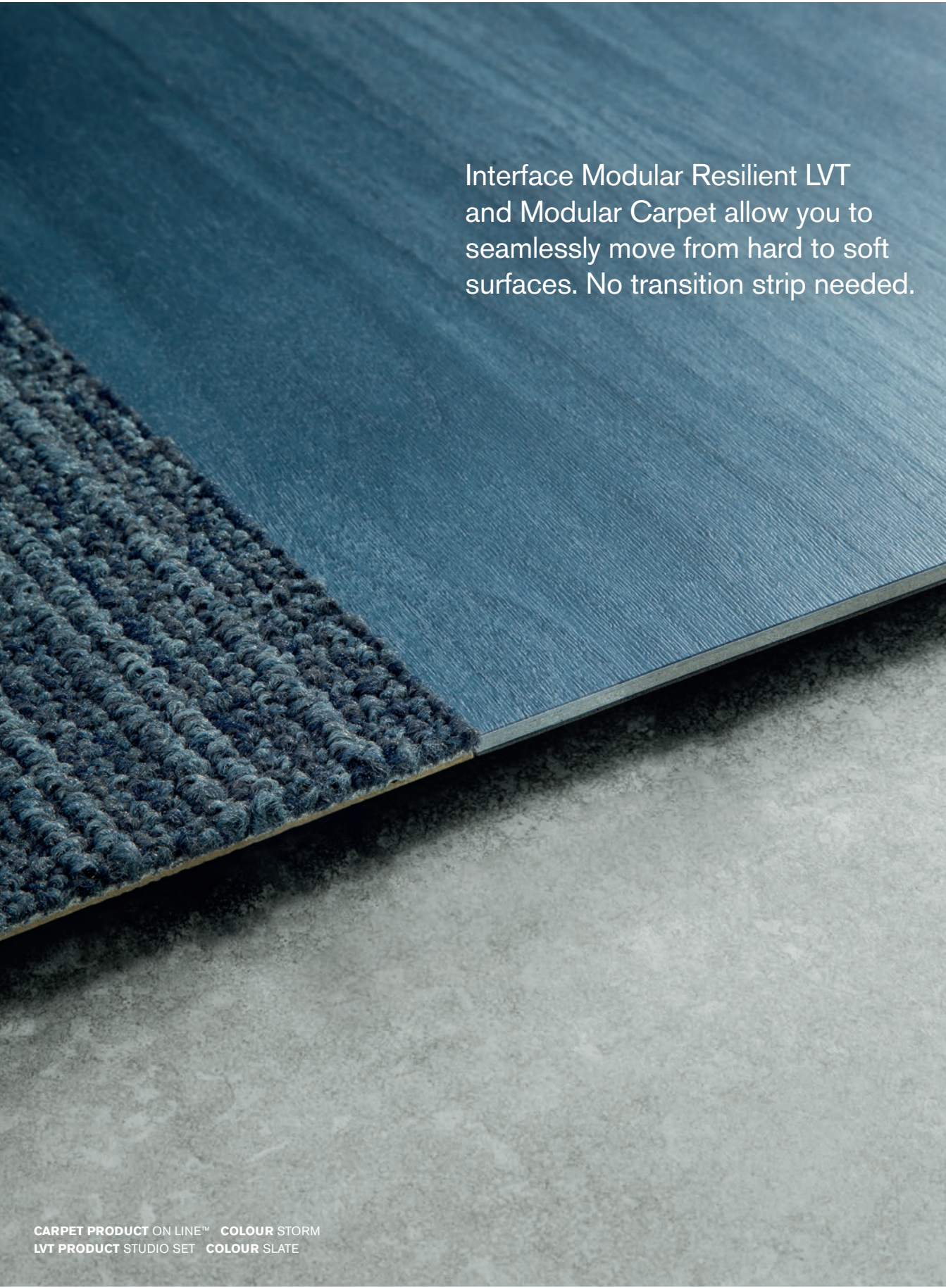


PRODUCT STUDIO SET COLOURS PEPPER, LIME, MARIGOLD, OCEAN
INSTALLED PATTERN BY TILE (ASHLAR)



PRODUCT STUDIO SET COLOURS SILVERLIGHT, PEWTER, PEPPER, MARIGOLD
INSTALLED PATTERN BY TILE





Interface Modular Resilient LVT
and Modular Carpet allow you to
seamlessly move from hard to soft
surfaces. No transition strip needed.

CARPET PRODUCT ON LINE™ COLOUR STORM
LVT PRODUCT STUDIO SET COLOUR SLATE

Why Our Modular Resilient LVT?

Integrated System.

Say goodbye to transition strips and doubling up. Our modular resilient floorings are made to work as a system with our modular carpet. The compatible size and height of our products allows you to integrate modular carpet for an inset rug or an adjacent field – no transition strip required. You'll avoid doubling up on materials and save money.

Real Flexibility.

Create a unique look that lasts. Interface modular resilient LVT makes it easy to extend the life of your floor. From simple maintenance like damp mopping to selectively replacing damaged tiles, your flooring investment will stand the test of time - beautifully and effortlessly.

Circular System.

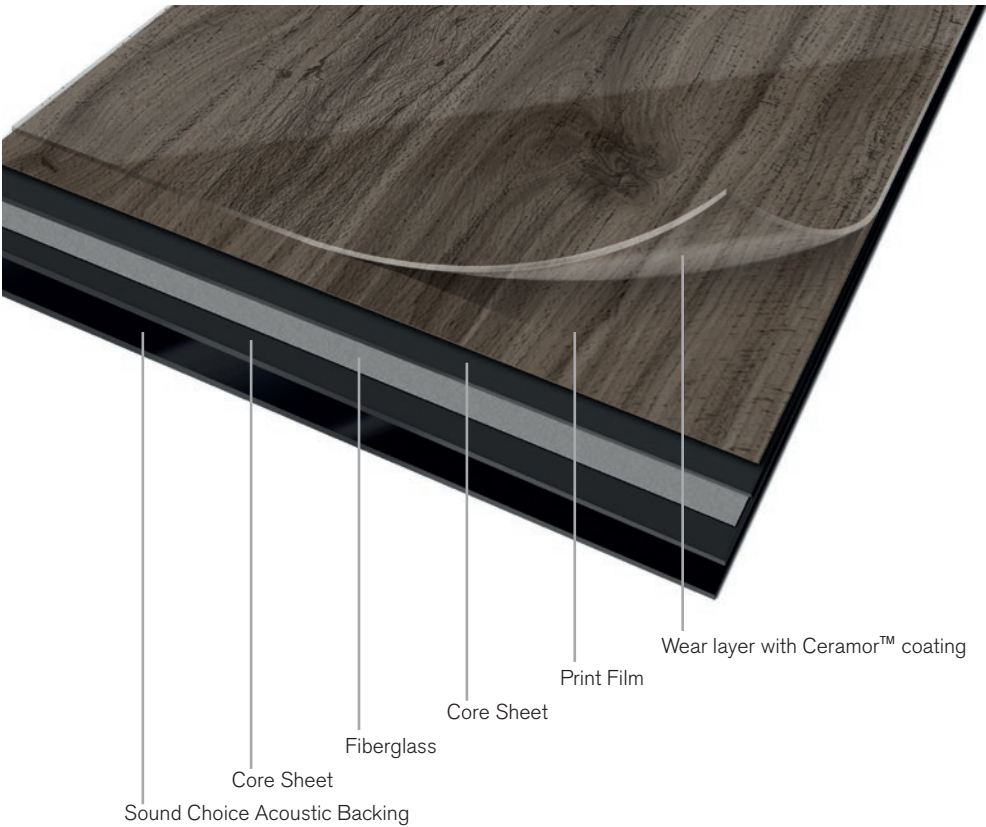
Keep flooring out of the landfill. Our modular resilient LVT is produced with a controlled material stream so it can be reclaimed and recycled into our GlasBac®RE recycled content backing through our ReEntry program.

Noise Reduction.

Silence distractions. Interface is helping create +Positive spaces with our LVT with Sound Choice™ backing. It's Quiet Mark™ certified for its superior noise reduction qualities, offering you best-in-class performance for reduced impact sound and floor to floor sound transmission.



Why Our Modular Resilient LVT? (continued)



High Performance from Top to Bottom.

From our Ceramor™ Top Coat to our Sound Choice™ backing, we've designed our modular resilient LVT to provide peak performance in even the most challenging work environment while also providing superior sound absorption.

Abrasion Resistance. Our Ceramor ceramic bead coating provides a durable finish that resists scratching and scuffing so your floors look better longer. Embossing adds texture to further enhance durability.

A Strong Core. Incorporating a fiberglass layer between two core sheets provides optimal dimensional stability and flexibility, allowing for a fully modular installation and the ability to move and update with ease.

Quiet Comfort. (or just "Quiet.") With an IIC rating of 57 our Sound Choice backing provides superior protection against vertical sound transfer. Minimizing noise enhances workplace productivity and creates more usable, comfortable spaces.

