

# NY+LON Streets Collection



Interface®



NY+LON Streets™ Collection

Aging architecture. Technological advancement. Sustainable design. The drive to update industrial spaces with fresh interiors inspires a new modern aesthetic. An increasingly tech-connected world makes us crave human contact in spaces that feel comfortable and flexible. In this way, the office becomes its own community hub. A city within a city.

Taking its name from carpet's core material and its inspiration from two of the world's iconic cities, NY+LON Streets™ is a playful carpet collection that encourages a new perspective on urban exploration. Wheler Street™, Old Street™, Dover Street™, and Reade Street™ interpret familiar textures in a variety of scales. Mercer Street™ embraces an unconventional grid pattern, which Broome Street™ punches up with contemporary colour. Altogether, the collection brings new meaning to the phrase, "Take to the streets."

As part of our global product portfolio, each style in NY+LON Streets is carbon neutral. Impactful on the floor. Impactful on the planet. **Carbon Neutral Floors™.**





Old Street™ Colourline



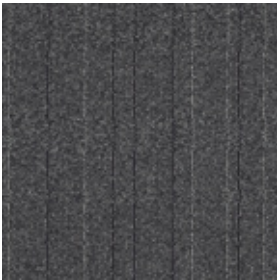
9442-001-000 CONCRETE GRID



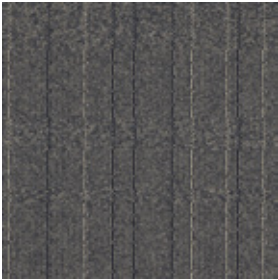
9442-002-000 BROWN GRID



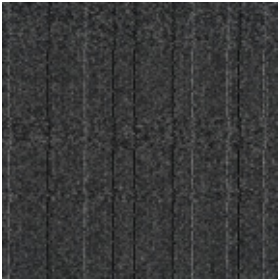
9442-003-000 IRON GRID



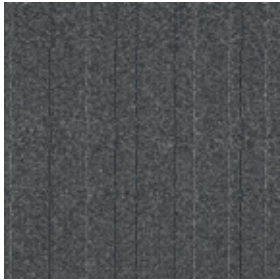
9442-004-000 STEEL GRID



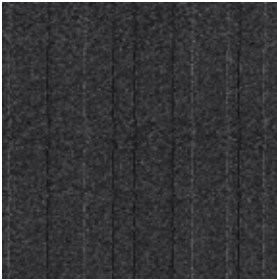
9442-005-000 METAL GRID



9442-006-000 GRAPHITE GRID



9442-007-000 SLATE GRID



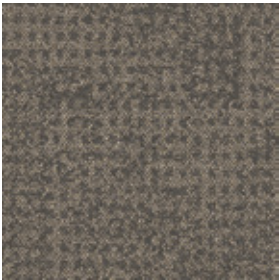
9442-008-000 BLACK GRID



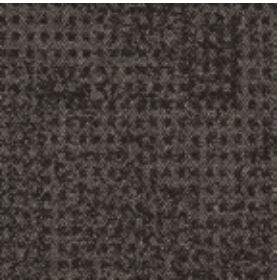




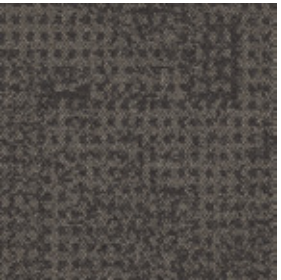
Wheler Street™ Colourline



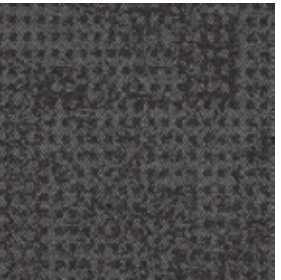
9438-001-000 CONCRETE SQUARE



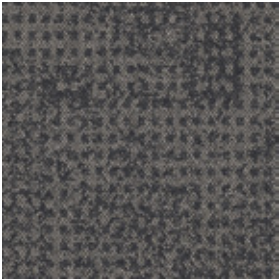
9438-002-000 BROWN SQUARE



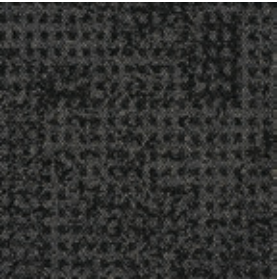
9438-003-000 IRON SQUARE



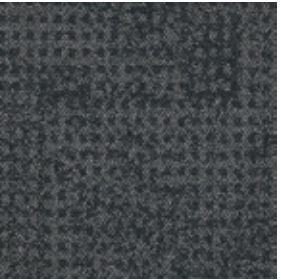
9438-004-000 STEEL SQUARE



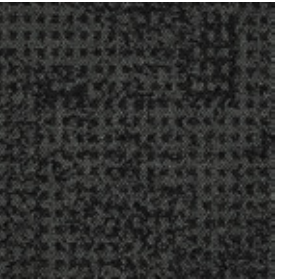
9438-005-000 METAL SQUARE



9438-006-000 GRAPHITE SQUARE



9438-007-000 SLATE SQUARE



9438-008-000 BLACK SQUARE



Dover Street™ Colourline



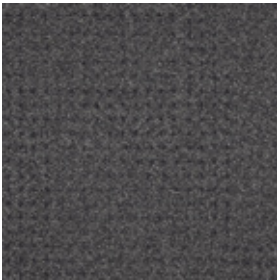
9444-001-000 CONCRETE DOT



9444-002-000 BROWN DOT



9444-003-000 IRON DOT



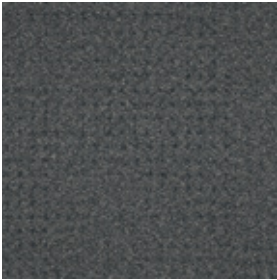
9444-004-000 STEEL DOT



9444-005-000 METAL DOT



9444-006-000 GRAPHITE DOT



9444-007-000 SLATE DOT



9444-008-000 BLACK DOT







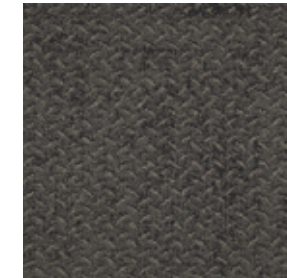
## Reade Street™ Colourline



9446-001-000 CONCRETE PLATE



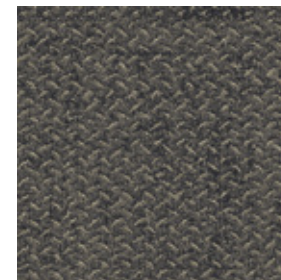
9446-002-000 BROWN PLATE



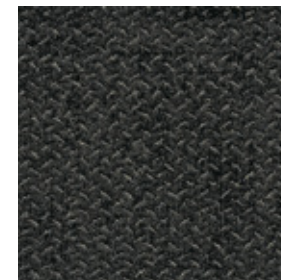
9446-003-000 IRON PLATE



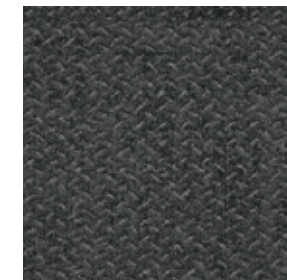
9446-004-000 STEEL PLATE



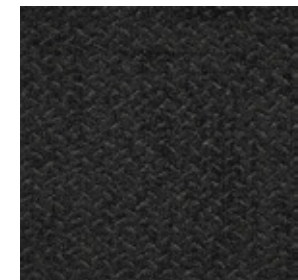
9446-005-000 METAL PLATE



9446-006-000 GRAPHITE PLATE



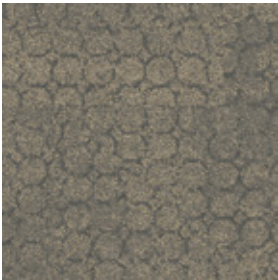
9446-007-000 SLATE PLATE



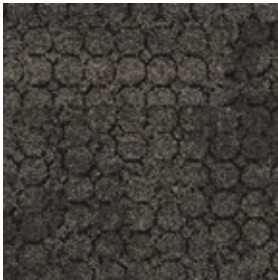
9446-008-000 BLACK PLATE



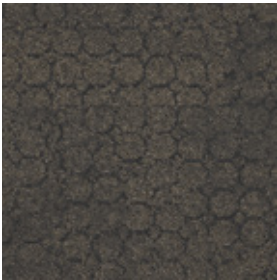
Mercer Street™ Colourline



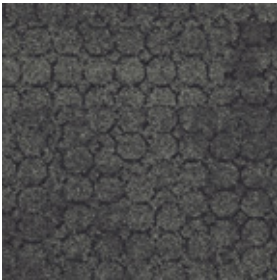
9447-001-000 CONCRETE CIRCLE



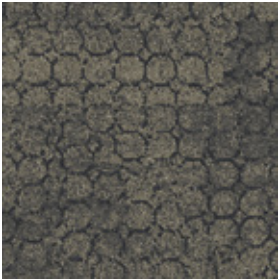
9447-002-000 BROWN CIRCLE



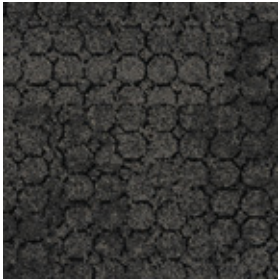
9447-003-000 IRON CIRCLE



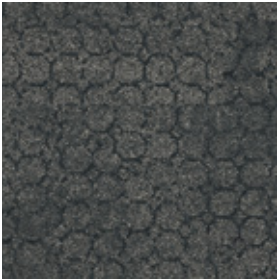
9447-004-000 STEEL CIRCLE



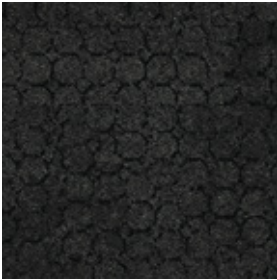
9447-005-000 METAL CIRCLE



9447-006-000 GRAPHITE CIRCLE



9447-007-000 SLATE CIRCLE



9447-008-000 BLACK CIRCLE

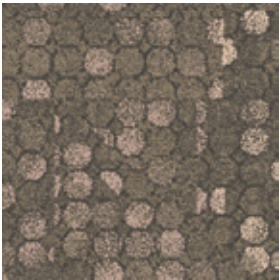


CARPET TILE MERCER STREET COLOUR BROWN CIRCLE INSTALLED MONOLITHIC

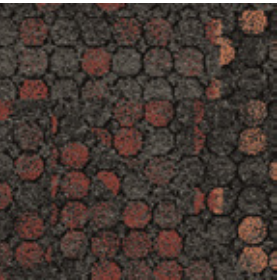




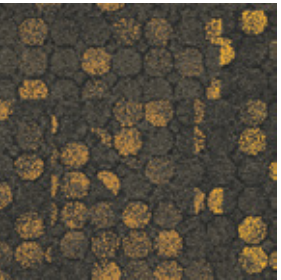
Broome Street™ Colourline



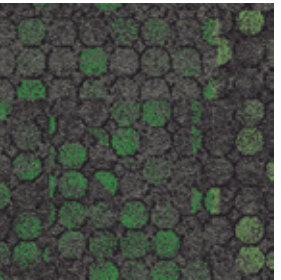
9440-001-000 CORAL GLASS



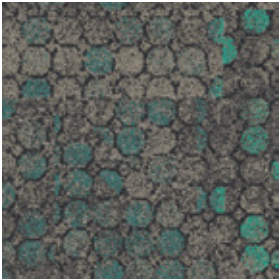
9440-002-000 BRICK GLASS



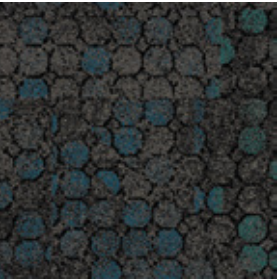
9440-003-000 YELLOW GLASS



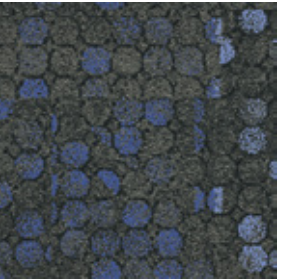
9440-004-000 GREEN GLASS



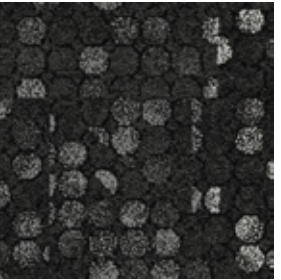
9440-005-000 TURQUOISE GLASS



9440-006-000 TEAL GLASS



9440-007-000 BLUE GLASS



9440-008-000 BLACK GLASS



# Interface Design Studio

The Interface Design Studio is a fully complimentary service intended to help designers at any phase of a project. With a deep knowledge of Interface products, our team of trained concept designers saves you time by focusing on the foundation of every design project — the floor.

# Carbon Neutral Floors™

Reduce your carbon footprint. All of the flooring products that we sell—carpet tile, lvt and rubber—are carbon neutral. By choosing Interface and Carbon Neutral Floors™, you can see exactly how much a floor is contributing to the reduction of global warming. No compromising on performance. No compromising the planet.





Specifications

Old Street™	
Style Code	9442
Product Construction	Tufted Textured Loop
Yarn System	100% Solution Dyed Nylon
Machine Gauge	Tapestry
Pile Thickness	2.5mm (± 0.5mm)
Total Thickness	5.5mm (± 0.5mm)
Tile Size	50x50cm
Area of Use	Commercial - Heavy Use
Lifetime Antimicrobial	Intersept®
Soil/Stain Protection	Protekt <sup>2</sup> ®
Installation Methods	Quarter Turn, Ashlar, Monolithic



Reade Street™	
Style Code	9446
Product Construction	Tufted Textured Loop
Yarn System	100% Solution Dyed Nylon
Machine Gauge	Tapestry
Pile Thickness	2.5mm (± 0.5mm)
Total Thickness	6.5mm (± 0.5mm)
Tile Size	50x50cm
Area of Use	Commercial - Heavy Use
Lifetime Antimicrobial	Intersept®
Soil/Stain Protection	Protekt <sup>2</sup> ®
Installation Methods	Monolithic



Wheler Street™	
Style Code	9438
Product Construction	Tufted Textured Loop
Yarn System	100% Solution Dyed Nylon
Machine Gauge	Tapestry
Pile Thickness	2.5mm (± 0.5mm)
Total Thickness	6.0mm (± 0.5mm)
Tile Size	50x50cm
Area of Use	Commercial - Heavy Use
Lifetime Antimicrobial	Intersept®
Soil/Stain Protection	Protekt <sup>2</sup> ®
Installation Methods	Monolithic, Non Directional



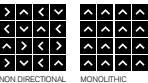
Mercer Street™	
Style Code	9447
Product Construction	Tufted Textured Loop
Yarn System	100% Solution Dyed Nylon
Machine Gauge	Tapestry
Pile Thickness	2.5mm (± 0.5mm)
Total Thickness	6.0mm (± 0.5mm)
Tile Size	50x50cm
Area of Use	Commercial - Heavy Use
Lifetime Antimicrobial	Intersept®
Soil/Stain Protection	Protekt <sup>2</sup> ®
Installation Methods	Monolithic



Dover Street™	
Style Code	9444
Product Construction	Tufted Textured Loop
Yarn System	100% Solution Dyed Nylon
Machine Gauge	Tapestry
Pile Thickness	2.5mm (± 0.5mm)
Total Thickness	6.0mm (± 0.5mm)
Tile Size	50x50cm
Area of Use	Commercial - Heavy Use
Lifetime Antimicrobial	Intersept®
Soil/Stain Protection	Protekt <sup>2</sup> ®
Installation Methods	Monolithic



Broome Street™	
Style Code	9440
Product Construction	Tufted Textured Loop
Yarn System	100% Solution Dyed Nylon
Machine Gauge	Tapestry
Pile Thickness	2.5mm (± 0.5mm)
Total Thickness	6.5mm (± 0.5mm)
Tile Size	50x50cm
Area of Use	Commercial - Heavy Use
Lifetime Antimicrobial	Intersept®
Soil/Stain Protection	Protekt <sup>2</sup> ®
Installation Methods	Non Directional, Monolithic



All Interface manufacturing facilities in the Asia Pacific region maintain registration to ISO 9001 Quality Management Systems and ISO 14001 Environmental Management Systems.

Production specifications are subject to normal manufacturing tolerances and may be changed without notice. Slight variation in colour among different production lots are normal and should be considered in the overall installation plan. Products covered by manufacturer's written warranty only. All other warranties, including without limitation any implied warranties of merchantability or fitness for particular purpose, are hereby disclaimed. Contact your representative for written warranty information.



**[www.interface.com](http://www.interface.com)**

**Australia**

Interface Australia  
local toll free: 1800 804 361

**India**

Interface India  
tel: +91 80 4613 1313

**South East Asia**

Interface Asia  
tel: +65 6478 1510

**South Korea**

Interface South Korea  
tel: +82 2 555 1734

**Japan**

Interface Japan  
tel: +81 3 5733 5211

**Beijing**

Interface China  
tel: +86 10 6590 7810

**Hong Kong**

Interface China  
tel: +852 2802 0838

**Shanghai**

Interface China  
tel: +86 21 6340 3868

02/2020  
SM0030T0



Climate change is undeniable. And reversible. Our mission is to prove it.  
**Join the #ClimateTakeBack and help create a climate fit for life.**