





# Human Nature<sup>™</sup> Collection

**www.interface.com**

**Australia**

Interface Australia  
local toll free: 1800 804 361

**India**

Interface India  
tel: +91 80 4613 1313

**South East Asia**

Interface Asia  
tel: +65 6478 1510

**South Korea**

Interface South Korea  
tel: +82 2 555 1734

**Japan**

Interface Japan  
tel: +81 3 5733 5211

**Beijing**

Interface China  
tel: +86 10 6590 7810

**Hong Kong**

Interface China  
tel: +852 2802 0838

**Shanghai**

Interface China  
tel: +86 21 6340 3868

02/2020  
SF0046T0



Climate change is undeniable. And reversible. Our mission is to prove it.  
**Join the #ClimateTakeBack and help create a climate fit for life.**

**Interface<sup>®</sup>**



Human Nature™ Collection

It's human nature to be creative. As designers we know that when we follow nature's example, designing spaces that ignite our senses through light, colour, texture and detail, we also spark the creative spirit in each of us.

Human Nature Collection was designed as a beautiful foundation for those spaces, made up of five different textures in 25cm x 1m skinny planks. Borrowing from natural elements, HN810™, HN850™ and HN840™ placed in sequence blend seamlessly in an organic movement that shows no hint of the corners or edges of the tile. HN820™ and HN830™ extend the range from very low profile to wildly-full and neutral to colourful.

Like everything in the natural world, transitions are varied. The skinny plank format lends itself to fluid transitions with its graceful, elongated dimensions. More dynamic connections are made when mixing hues and textures with the bold geometry of the tile.

Of course, Human Nature Collection is made of up to 81% total recycled content, including 100% recycled nylon made in part from reclaimed fishing nets. And when its useful life is through, it can be recycled through Interface's ReEntry® Program.

Your turn. Be creative – it's in your nature.







PRODUCT HN810 COLOUR SLATE PRODUCT HN850 COLOUR NICKEL  
PRODUCT HN830 COLOUR MAIZE INSTALLED HERRINGBONE





PRODUCT HN810 COLOUR NICKEL PRODUCT HN840 COLOUR NICKEL  
PRODUCT HN850 COLOUR NICKEL INSTALLED ASHLAR



PRODUCT HN820 COLOUR SHALE PRODUCT HN840 COLOUR SHALE  
INSTALLED PATTERN BY TILE





PRODUCT HN840, COLOUR NICKEL, INSTALLED ASHLAR

HN840™ Colourline



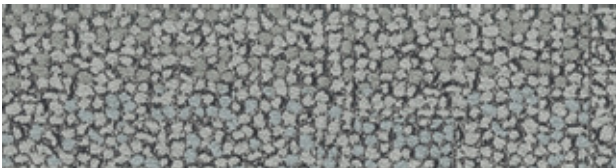
7619-001-000 Flint



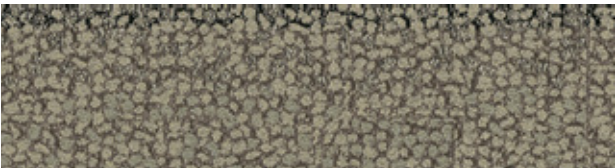
7619-002-000 Nickel



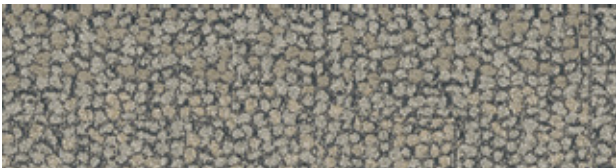
7619-003-000 Slate



7619-004-000 Limestone



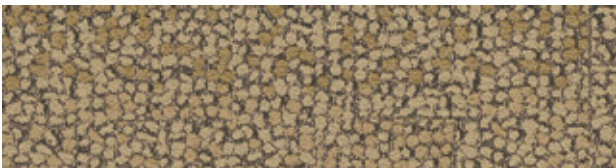
7619-005-000 Pumice



7619-006-000 Shale



7619-007-000 Earth



7619-008-000 Travertine





PRODUCT HN850 COLOUR SLATE INSTALLED ASHLAR

## HN850™ Colourline



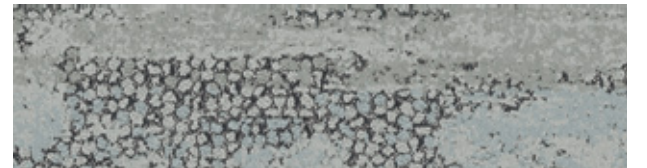
7615-001-000 Flint



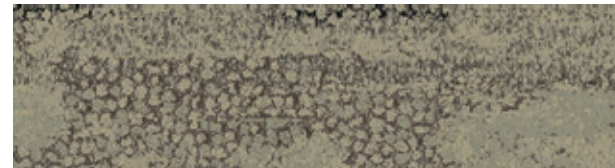
7615-002-000 Nickel



7615-003-000 Slate



7615-004-000 Limestone



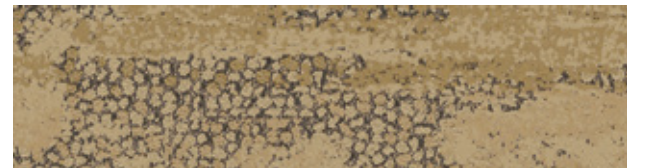
7615-005-000 Pumice



7615-006-000 Shale



7615-007-000 Earth



7615-008-000 Travertine





HN810™ Colourline



7617-001-000 Flint



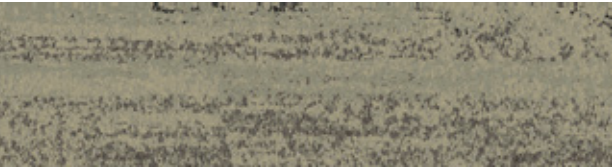
7617-002-000 Nickel



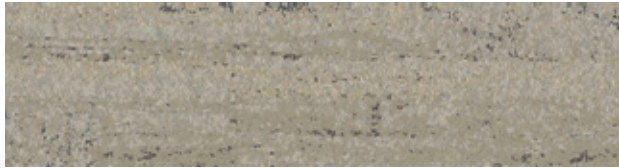
7617-003-000 Slate



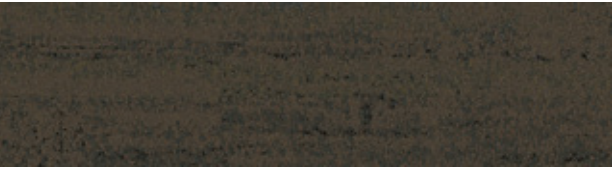
7617-004-000 Limestone



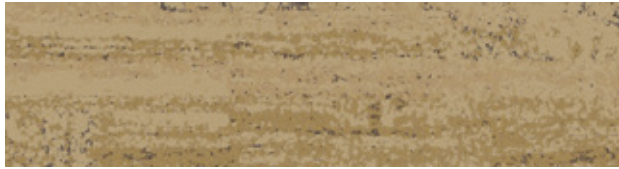
7617-005-000 Pumice



7617-006-000 Shale



7617-007-000 Earth



7617-008-000 Travertine





PRODUCT HN820 COLOUR FLINT INSTALLED ASHLAR

HN820™ Colourline



7627-001-000 Flint



7627-002-000 Nickel



7627-003-000 Slate



7627-004-000 Limestone



7627-005-000 Pumice



7627-006-000 Shale



7627-007-000 Earth



7627-008-000 Travertine





PRODUCT HN830 COLOURS MAIZE, COBALT, CLEMENTINE INSTALLED ASHLAR

HN830™ Colourline



7621-001-000 Persimmon



7621-002-000 Maize



7621-003-000 Black



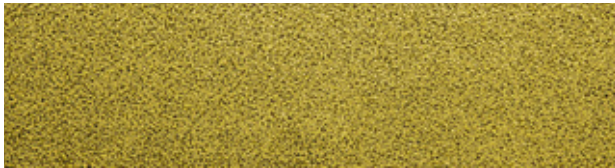
7621-004-000 Cobalt



7621-005-000 Clementine



7621-006-000 Kiwi



7621-007-000 Pistachio



7621-008-000 Bone

HN830 has been specifically designed to be used in small areas as borders, accents or insets. We do not recommend its use in large areas.





PRODUCT HN810 COLOURS FLINT, SLATE INSTALLED ASHLAR



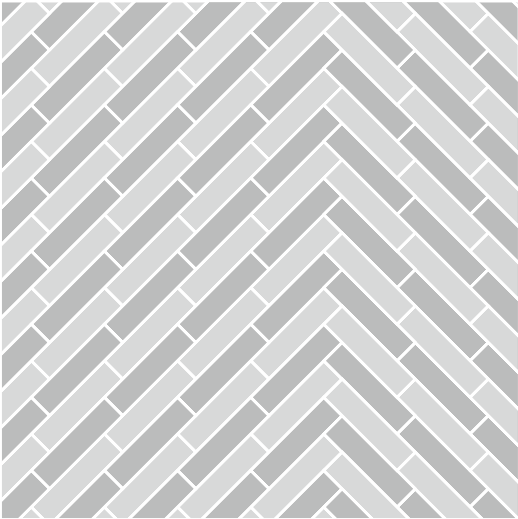
PRODUCT HN810 COLOUR LIMESTONE PRODUCT HN840 COLOUR LIMESTONE  
PRODUCT HN850 COLOUR LIMESTONE PRODUCT HN830 COLOUR CLEMENTINE INSTALLED ASHLAR



Design Ideas    Use the layout suggestions below to create your own unique floor designs.



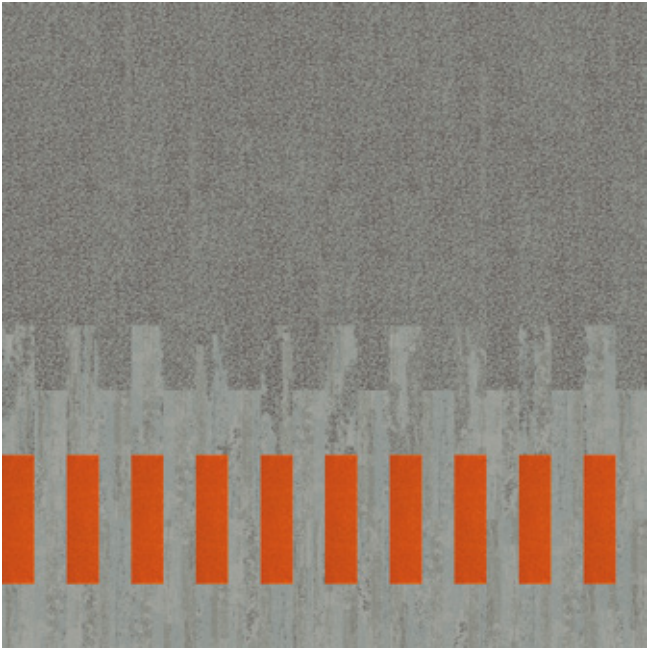
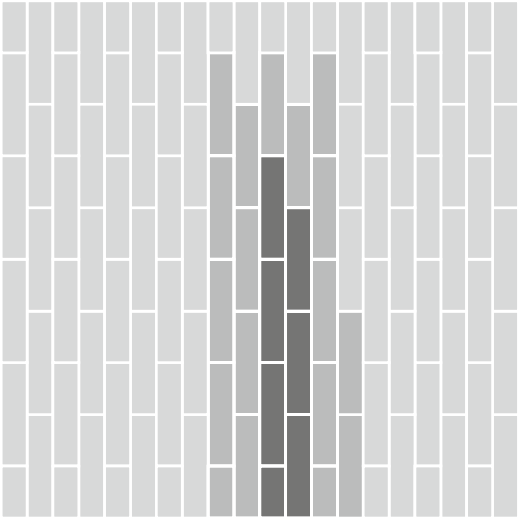
PRODUCT HN820   COLOUR SHALE   PRODUCT HN840   COLOUR SHALE   INSTALLED PATTERN BY TILE



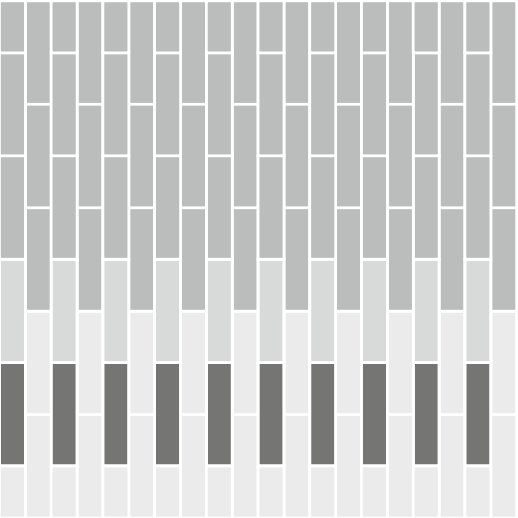
PRODUCT HN810   COLOUR SLATE   PRODUCT HN850   COLOUR NICKEL   PRODUCT HN830   COLOUR MAIZE  
INSTALLED HERRINGBONE



PRODUCT HN840   COLOUR NICKEL   PRODUCT HN850   COLOUR NICKEL   PRODUCT HN810   COLOUR NICKEL  
INSTALLED ASHLAR



PRODUCT HN840   COLOUR LIMESTONE   PRODUCT HN850   COLOUR LIMESTONE   PRODUCT HN810   COLOUR LIMESTONE   PRODUCT HN830  
COLOUR CLEMENTINE   INSTALLED ASHLAR





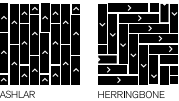
Specifications

HN810™

Style Code  
Product Construction  
Yarn System  
Machine Gauge  
Pile Thickness  
Total Thickness  
Tile Size  
Area of Use  
Lifetime Antimicrobial  
Soil/Stain Protection  
Installation Methods



7617 Pattern 000  
Tufted Textured Tip Sheared Loop  
100% Recycled Solution Dyed Nylon  
1/10  
5.0mm +/- 0.5mm  
9.0mm +/- 0.5mm  
25cm x 100cm  
Commercial – Heavy Use  
Intersept®  
Protekt<sup>2</sup>®  
Ashlar, Herringbone

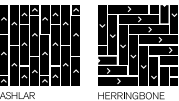


HN820™

Style Code  
Product Construction  
Yarn System  
Machine Gauge  
Pile Thickness  
Total Thickness  
Tile Size  
Area of Use  
Lifetime Antimicrobial  
Soil/Stain Protection  
Installation Methods



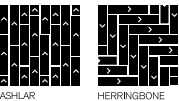
7627 Pattern 000  
Tufted Cut and Loop  
100% Recycled Solution Dyed Nylon  
5/64  
3.0mm +/- 0.5mm  
6.5mm +/- 0.5mm  
25cm x 100cm  
Commercial – Heavy Use  
Intersept®  
Protekt<sup>2</sup>®  
Ashlar, Herringbone



HN830™

Style Code  
Product Construction  
Yarn System  
Machine Gauge  
Pile Thickness  
Total Thickness  
Tile Size  
Area of Use  
Lifetime Antimicrobial  
Soil/Stain Protection  
Installation Methods

7621 Pattern 000  
Tufted Cut Pile  
100% Recycled Solution Dyed Nylon  
5/32  
7.5mm +/- 0.5mm  
11.5mm +/- 0.5mm  
25cm x 100cm  
Commercial – General Use  
Intersept®  
Protekt<sup>2</sup>®  
Ashlar, Herringbone



HN830 has been specifically designed to be used in small areas as borders, accents or insets. We do not recommend its use in large areas.

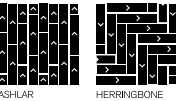
Specifications

HN840™

Style Code  
Product Construction  
Yarn System  
Machine Gauge  
Pile Thickness  
Total Thickness  
Tile Size  
Area of Use  
Lifetime Antimicrobial  
Soil/Stain Protection  
Installation Methods



7619 Pattern 000  
Tufted Textured Loop  
100% Recycled Solution Dyed Nylon  
1/10  
4.5mm +/- 0.5mm  
8.5mm +/- 0.5mm  
25cm x 100cm  
Commercial – Heavy Use  
Intersept®  
Protekt<sup>2</sup>®  
Ashlar, Herringbone

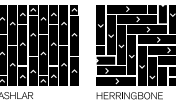


HN850™

Style Code  
Product Construction  
Yarn System  
Machine Gauge  
Pile Thickness  
Total Thickness  
Tile Size  
Area of Use  
Lifetime Antimicrobial  
Soil/Stain Protection  
Installation Methods



7615 Pattern 000  
Tufted Textured Tip Sheared Loop  
100% Recycled Solution Dyed Nylon  
1/10  
4.5mm +/- 0.5mm  
8.5mm +/- 0.5mm  
25cm x 100cm  
Commercial – Heavy Use  
Intersept®  
Protekt<sup>2</sup>®  
Ashlar, Herringbone



All Interface manufacturing facilities in the Asia Pacific region maintain registration to ISO 9001 Quality Management Systems and ISO 14001 Environmental Management Systems.

Production specifications are subject to normal manufacturing tolerances and may be changed without notice. Slight variation in colour among different production lots are normal and should be considered in the overall installation plan. Products covered by manufacturer's written warranty only. All other warranties, including without limitation any implied warranties of merchantability or fitness for particular purpose, are hereby disclaimed. Contact your representative for written warranty information.



Carbon Neutral Floors™  
All of our products are carbon neutral and our programme is verified by an independent third party, Bureau Veritas.

