

www.interface.com

Australia

Interface Australia
local toll free: 1800 804 361

India

Interface India
tel: +91 80 4613 1313

South East Asia

Interface Asia
tel: +65 6478 1510

South Korea

Interface South Korea
tel: +82 2 555 1734

Japan

Interface Japan
tel: +81 3 5733 5211

Beijing

Interface China
tel: +86 10 6590 7810

Hong Kong

Interface China
tel: +852 2802 0838

Shanghai

Interface China
tel: +86 21 6340 3868

02/2020
SF0096T0



Climate change is undeniable. And reversible. Our mission is to prove it.
Join the #ClimateTakeBack and help create a climate fit for life.



Interface®

Human Connections™ Collection

Today, we are both more connected as a society and, ironically, increasingly less connected, shielded from each other and the natural world by our screens, our cars, our homes and the buildings in which we work. But when we walk outside, our pathways reveal the importance of reconnection: the choices we make in our destinations, how we get there and the unexpected gathering places that we happen upon. Invariably we are also drawn to areas of respite where nature is present, nurtured to grow in the environment or simply there by its own persistence.

Human Connections is literally the intersection of the sensory cues that we seek to include in our fast paced lives, supporting the idea that the most positive spaces offer variability and choice. Eight different styles fit together in unique ways to create paths, intersections, collision zones and destinations. Sett in Stone™, Kerbstone™, Paver™ and Flagstone™ are four textures that recall the well-worn streets of the city, while Moss™ and Moss in Stone™ attach seamlessly to Sett in Stone to introduce the greenery we crave in a very organic way.

To complete the collection we have included two styles from FLOR® by Interface, Rue™ and Stone Course™. These highly patterned and colorful styles add a lively graffiti-like impact.

Create your path to +Positive spaces with Human Connections.

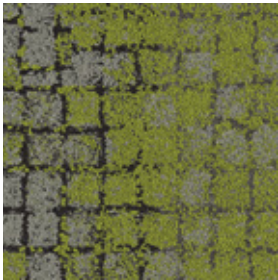




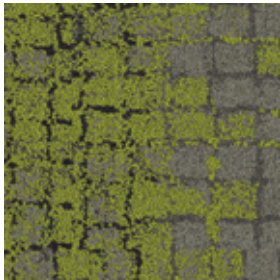
Moss Colourline



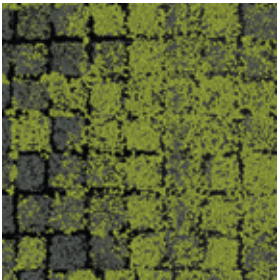
8341-001-000 GRANITE/MOSS



8341-002-000 SLATE/MOSS



8341-003-000 FLINT/MOSS



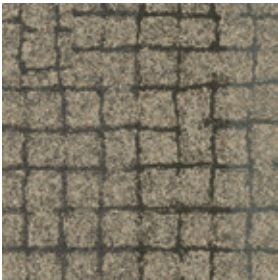
8341-004-000 ONYX/MOSS



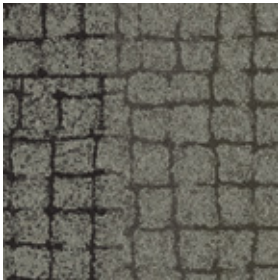
CARPET TILE MOSS COLOUR FLINT/MOSS INSTALLED NON DIRECTIONAL



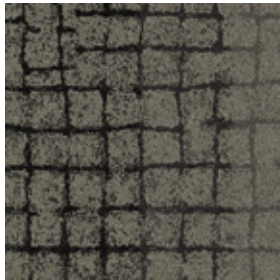
Sett in Stone Colourline



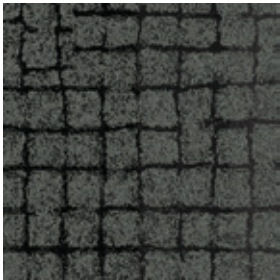
8342-001-000 GRANITE



8342-002-000 SLATE

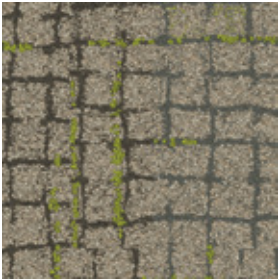


8342-003-000 FLINT

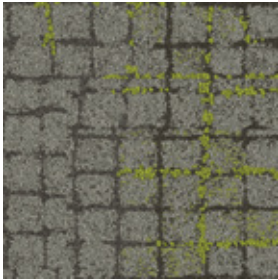


8342-004-000 ONYX

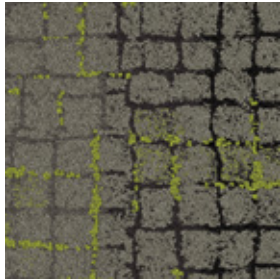
Moss in Stone Colourline



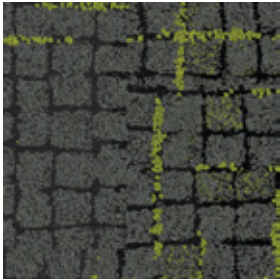
8340-001-000 GRANITE EDGE



8340-002-000 SLATE EDGE



8340-003-000 FLINT EDGE

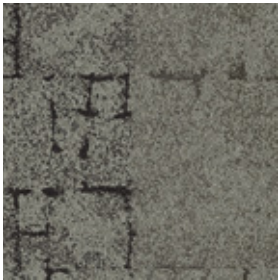


8340-004-000 ONYX EDGE

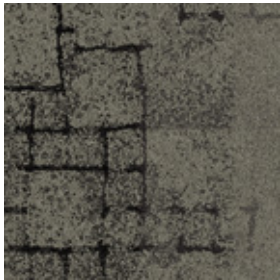
Kerbstone Colourline



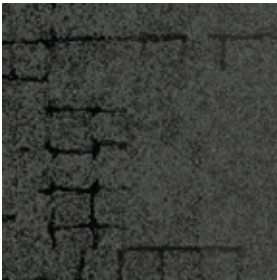
8339-001-000 GRANITE



8339-002-000 SLATE



8339-003-000 FLINT



8339-004-000 ONYX





Paver Colourline



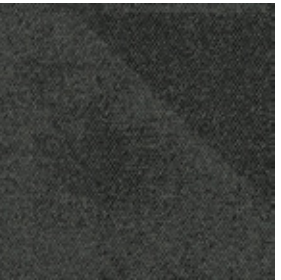
8337-001-000 GRANITE



8337-002-000 SLATE



8337-003-000 FLINT



8337-004-000 ONYX

Flagstone Colourline



8338-001-000 GRANITE



8338-002-000 SLATE



8338-003-000 FLINT



8338-004-000 ONYX



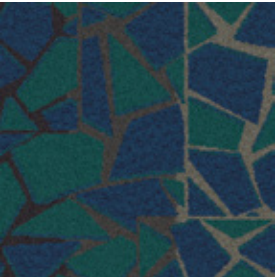
CARPET TILE FLAGSTONE COLOURS FLINT, ONYX
CARPET TILE SETT IN STONE COLOUR ONYX INSTALLED NON DIRECTIONAL



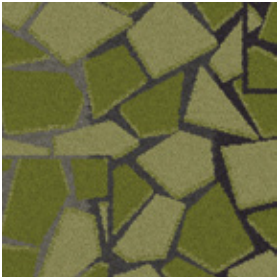
Rue Colourline



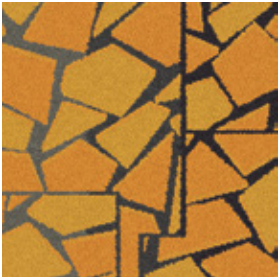
8344-001-000 GREY



8344-002-000 TEAL



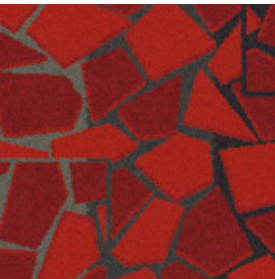
8344-003-000 GREEN



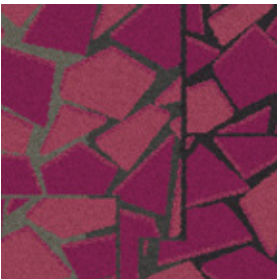
8344-004-000 YELLOW



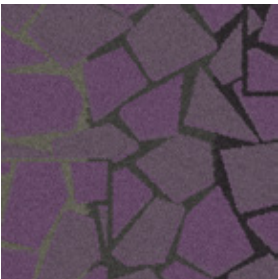
8344-005-000 ORANGE



8344-006-000 RED



8344-007-000 PINK

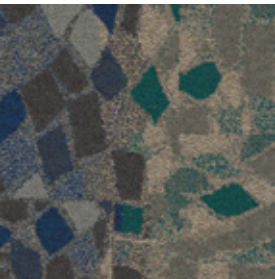


8344-008-000 PURPLE

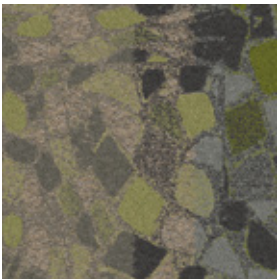
Stone Course Colourline



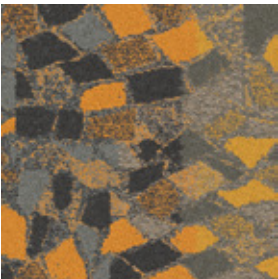
8343-001-000 GREY/STONE



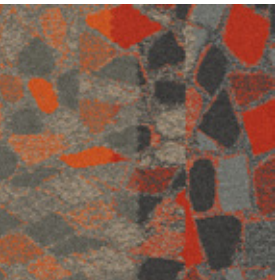
8343-002-000 TEAL/STONE



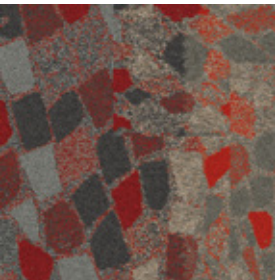
8343-003-000 GREEN/STONE



8343-004-000 YELLOW/STONE



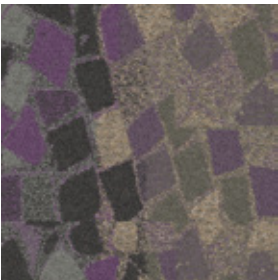
8343-005-000 ORANGE/STONE



8343-006-000 RED/STONE

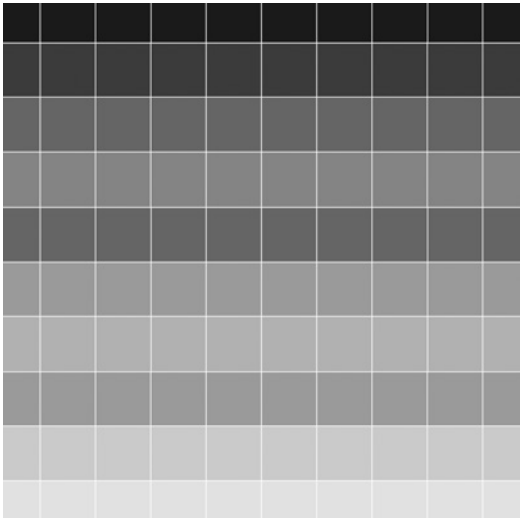


8343-007-000 PINK/STONE

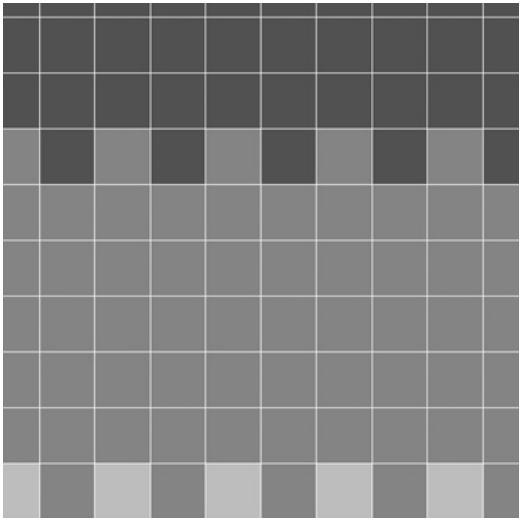
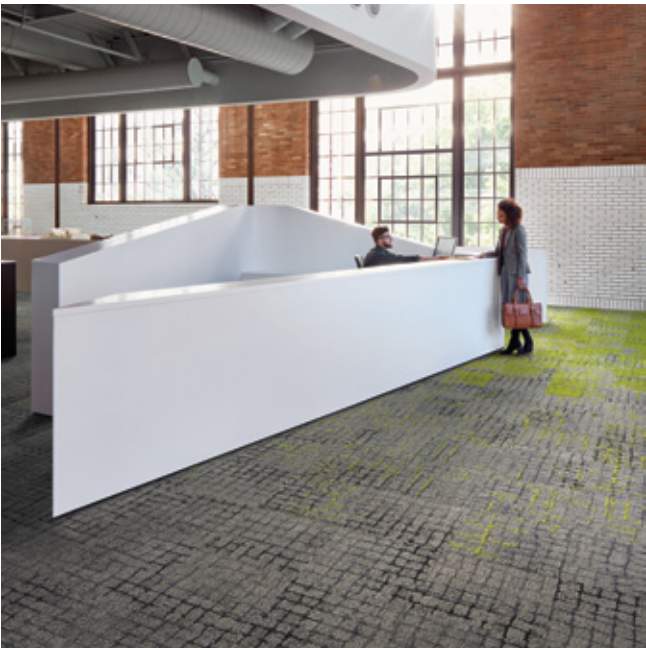


8343-008-000 PURPLE/STONE

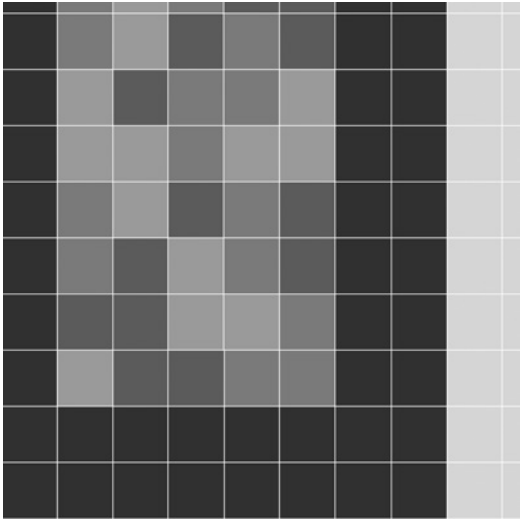
Design Ideas Below are floor layouts showing how to create the design ideas shared in several of the images featured in this brochure.



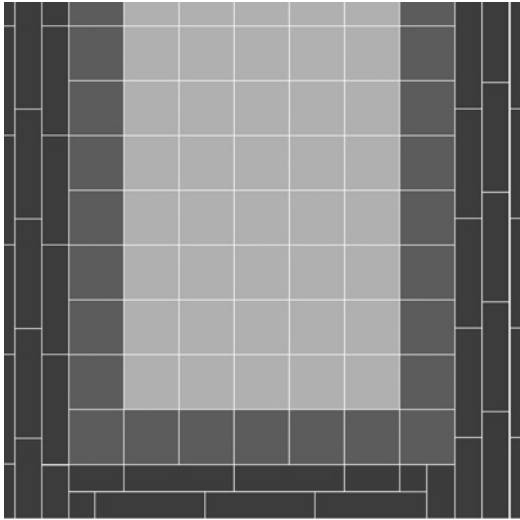
CARPET TILE MOSS IN STONE **COLOURS** GRANITE EDGE, SLATE EDGE, FLINT EDGE, ONYX EDGE **CARPET TILE** MOSS **COLOURS** GRANITE/MOSS, SLATE/MOSS, FLINT/MOSS, ONYX/MOSS **INSTALLED** PATTERN BY TILE



CARPET TILE SETT IN STONE **COLOUR** FLINT **CARPET TILE** MOSS IN STONE **COLOUR** FLINT EDGE **CARPET TILE** MOSS **COLOUR** FLINT/MOSS **INSTALLED** PATTERN BY TILE

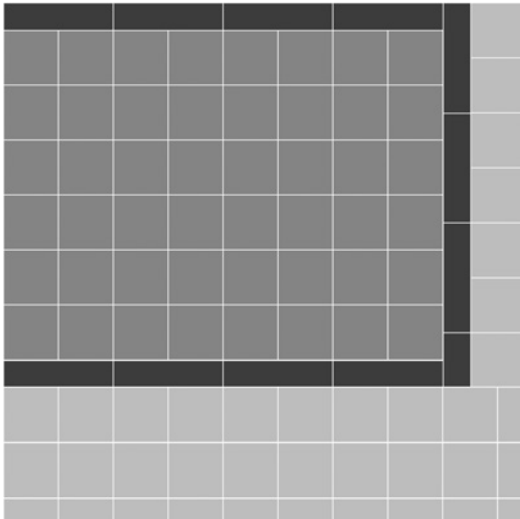


CARPET TILE FLAGSTONE **COLOUR** SLATE **CARPET TILE** STONE COURSE **COLOURS** TEAL/STONE, ORANGE/STONE, PURPLE/STONE **LVT** TEXTURED STONES **COLOUR** COOL POLISHED CEMENT **INSTALLED** NON DIRECTIONAL

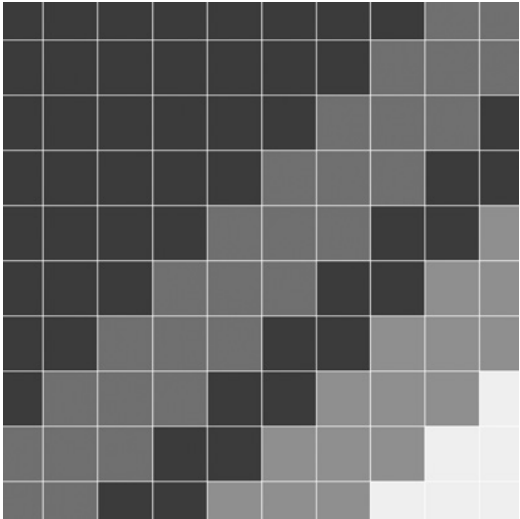


CARPET TILE HUMAN NATURE | HN840 **COLOUR** SLATE **CARPET TILE** MOSS **COLOURS** SLATE/MOSS, ONYX/MOSS **CARPET TILE** MOSS IN STONE **COLOUR** ONYX EDGE **INSTALLED** PATTERN BY TILE

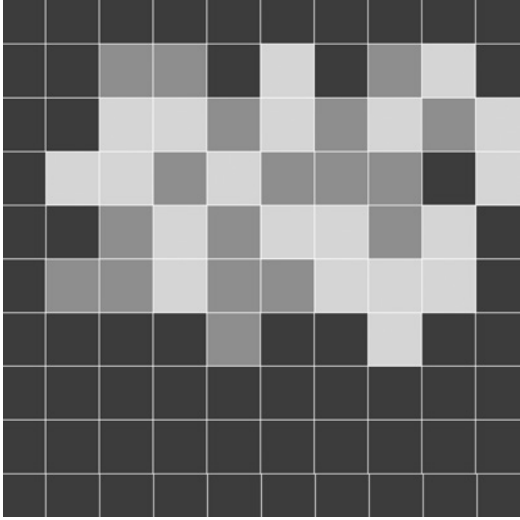
Design Ideas Below are floor layouts showing how to create the design ideas shared in several of the images featured in this brochure.



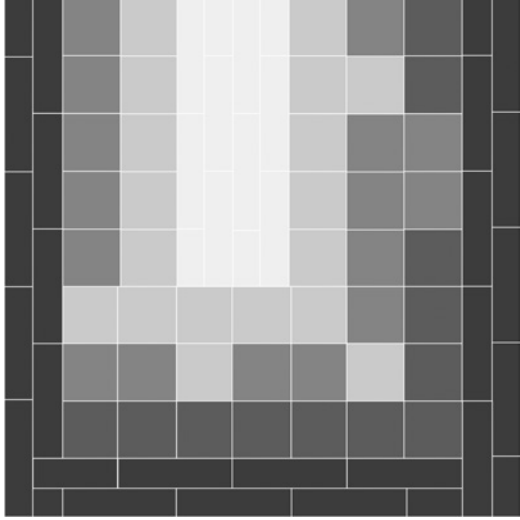
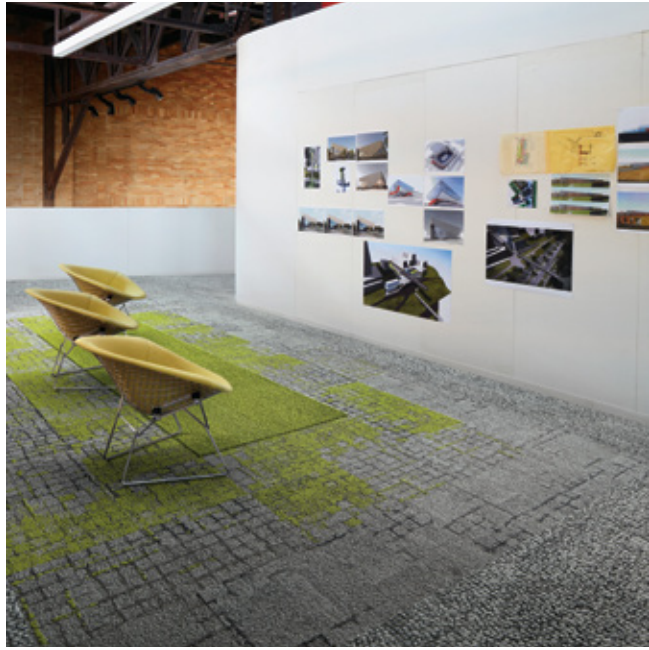
CARPET TILE PAVER COLOUR ONYX CARPET TILE SETT IN STONE COLOUR GRANITE
CARPET TILE URBAN RETREAT | UR501 COLOUR GRASS INSTALLED PATTERN BY TILE



CARPET TILE MOSS COLOUR SLATE/MOSS CARPET TILE PAVER COLOUR SLATE CARPET TILE SETT IN STONE COLOUR SLATE
CARPET TILE KERBSTONE COLOUR SLATE INSTALLATION PATTERN BY TILE



CARPET TILE SETT IN STONE COLOUR ONYX CARPET TILE STONE COURSE COLOUR TEAL/STONE CARPET TILE RUE COLOUR TEAL
INSTALLED PATTERN BY TILE



CARPET TILE KERBSTONE COLOUR SLATE CARPET TILE MOSS IN STONE COLOUR SLATE EDGE CARPET TILE MOSS COLOUR SLATE/MOSS
CARPET TILE HUMAN NATURE | HN830 COLOUR KIWI CARPET TILE HUMAN NATURE | HN840 COLOUR LIMESTONE
INSTALLATION PATTERN BY TILE

Specifications

Moss™ i2

Style Code	8341 Pattern 000
Product Construction	Tufted textured Loop
Yarn System	100% Recycled Solution Dyed Nylon
Machine Gauge	1/10
Pile Thickness	3.0mm +/- 0.5mm
Total Thickness	6.5mm +/- 0.5mm
Tile Size	50cm x 50cm
Area of Use	Commercial – Heavy Use
Lifetime Antimicrobial	Intersept®
Soil/Stain Protection	Protekt ² ®
Installation Methods	Non Directional



NON DIRECTIONAL

Moss in stone™ i2

Style Code	8340 Pattern 000
Product Construction	Tufted textured Loop
Yarn/Fibre	100% Recycled Solution Dyed Nylon
Machine Gauge	1/10
Pile Thickness	3.0mm +/- 0.5mm
Total Thickness	6.5mm +/- 0.5mm
Tile Size	50cm x 50cm
Area of Use	Commercial – Heavy Use
Lifetime Antimicrobial	Intersept®
Soil/Stain Protection	Protekt ² ®
Installation Methods	Non Directional



NON DIRECTIONAL

Paver™ i2

Style Code	8337 Pattern 000
Product Construction	Tufted textured Loop
Yarn System	100% Recycled Solution Dyed Nylon
Machine Gauge	1/12
Pile Thickness	3.0mm +/- 0.5mm
Total Thickness	6.5mm +/- 0.5mm
Tile Size	50cm x 50cm
Area of Use	Commercial – Heavy Use
Lifetime Antimicrobial	Intersept®
Soil/Stain Protection	Protekt ² ®
Installation Methods	Non Directional



NON DIRECTIONAL

Sett in stone™ i2

Style Code	8342 Pattern 000
Product Construction	Tufted textured Loop
Yarn System	100% Recycled Solution Dyed Nylon
Machine Gauge	1/10
Pile Thickness	3.0mm +/- 0.5mm
Total Thickness	6.5mm +/- 0.5mm
Tile Size	50cm x 50cm
Area of Use	Commercial – Heavy Use
Lifetime Antimicrobial	Intersept®
Soil/Stain Protection	Protekt ² ®
Installation Methods	Non Directional



NON DIRECTIONAL

Kerbstone™ i2

Style Code	8339 Pattern 000
Product Construction	Tufted textured Loop
Yarn System	100% Recycled Solution Dyed Nylon
Machine Gauge	1/10
Pile Thickness	3.0mm +/- 0.5mm
Total Thickness	6.5mm +/- 0.5mm
Tile Size	50cm x 50cm
Area of Use	Commercial – Heavy Use
Lifetime Antimicrobial	Intersept®
Soil/Stain Protection	Protekt ² ®
Installation Methods	Non Directional



NON DIRECTIONAL

Flagstone™ i2

Style Code	8338 Pattern 000
Product Construction	Tufted textured Loop
Yarn System	100% Recycled Solution Dyed Nylon
Machine Gauge	1/10
Pile Thickness	3.0mm +/- 0.5mm
Total Thickness	6.5mm +/- 0.5mm
Tile Size	50cm x 50cm
Area of Use	Commercial – Heavy Use
Lifetime Antimicrobial	Intersept®
Soil/Stain Protection	Protekt ² ®
Installation Methods	Non Directional



NON DIRECTIONAL

Specifications

Rue™

Style Code	8344 Pattern 000
Product Construction	Tufted textured Loop
Yarn System	100% Recycled Solution Dyed Nylon
Machine Gauge	1/10
Pile Thickness	4.0mm +/- 0.5mm
Total Thickness	8.0mm +/- 0.5mm
Tile Size	50cm x 50cm
Area of Use	Commercial – Heavy Use
Lifetime Antimicrobial	Intersept®
Soil/Stain Protection	Protekt ² ®
Installation Methods	Non Directional



NON DIRECTIONAL

Stone Course™

Style Code	8343 Pattern 000
Product Construction	Tufted textured Loop
Yarn System	100% Recycled Solution Dyed Nylon
Machine Gauge	1/10
Pile Thickness	3.5mm +/- 0.5mm
Total Thickness	7.5mm +/- 0.5mm
Tile Size	50cm x 50cm
Area of Use	Commercial – Heavy Use
Lifetime Antimicrobial	Intersept®
Soil/Stain Protection	Protekt ² ®
Installation Methods	Non Directional



NON DIRECTIONAL



Carbon Neutral Floors™

All of our products are carbon neutral and our programme is verified by an independent third party, Bureau Veritas.



All Interface manufacturing facilities in the Asia Pacific region maintain registration to ISO 9001 Quality Management Systems and ISO 14001 Environmental Management Systems.

Production specifications are subject to normal manufacturing tolerances and may be changed without notice. Slight variation in colour among different production lots are normal and should be considered in the overall installation plan. Products covered by manufacturer's written warranty only. All other warranties, including without limitation any implied warranties of merchantability or fitness for particular purpose, are hereby disclaimed. Contact your representative for written warranty information.