



*Interface Hospitality*

**Welcome to beautiful,  
modular flooring design.**

*Our Luxury Vinyl Tile Collections*



Interface® Hospitality

## Beautiful Luxury Vinyl Tile flooring that performs.

We've designed our LVT and Carpet Tiles to work together seamlessly – with no transition strips. This effortless meeting of hard surfaces, soft textures, endless pattern and colour combinations allows you to create stunning flooring designs.

Together with Interface's truly unique offering of products and services, you'll have everything you need to meet your next design challenge and create spaces people love to be in.

Our LVT designs come with our superior Sound Choice™ backing. So even hard floors can minimise noise, making it easier for you to create spaces for concentration and focus. And as with all interface flooring, all our products are carbon neutral with Carbon Neutral Floors™.

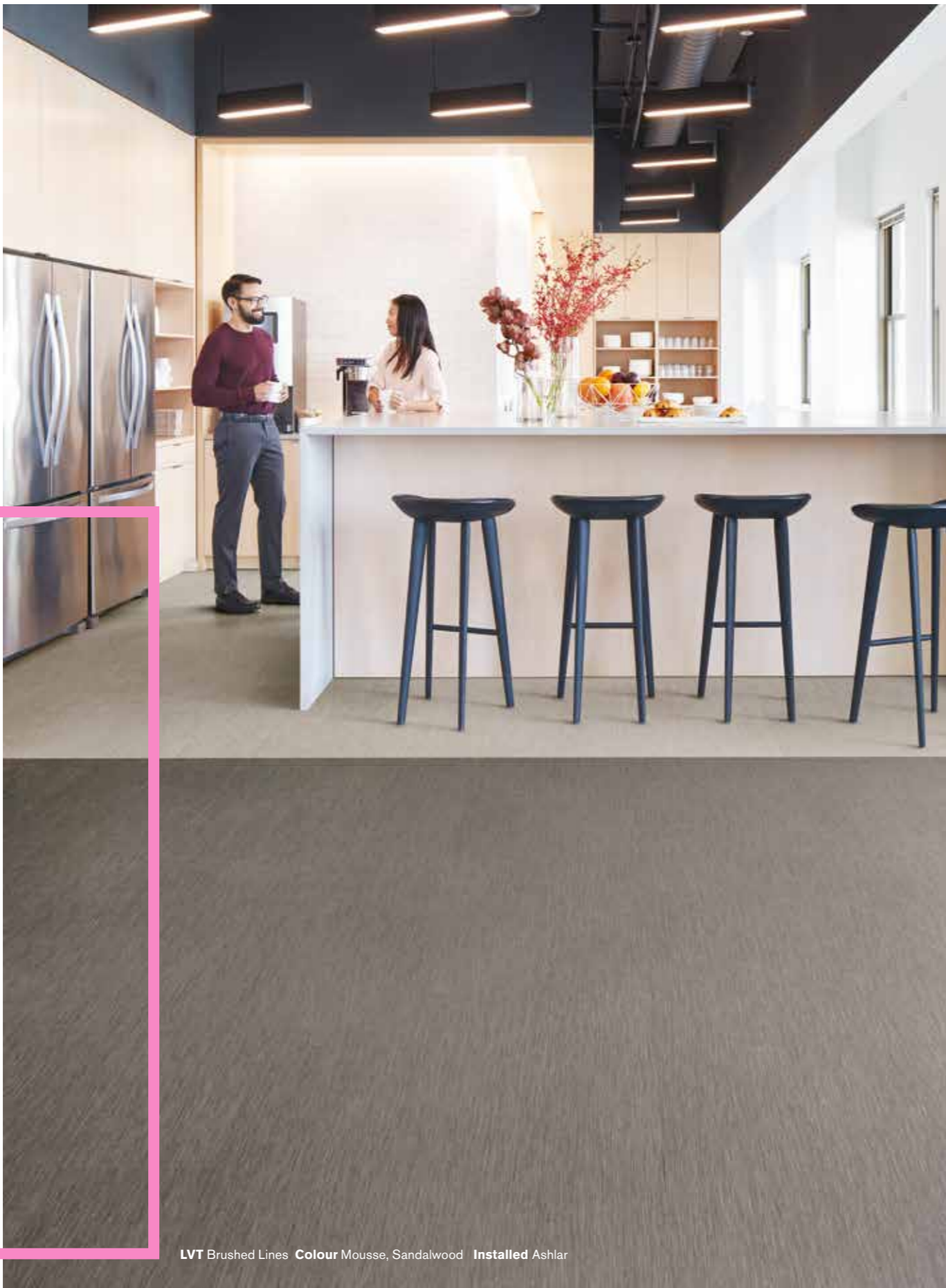
# A wealth of design choice.

## Luxury Vinyl Tile Products

With thoughtful consideration for design, performance and a sustainable path, we've created an offering of luxury vinyl tile to fit perfectly into the Interface Hospitality modular flooring system.

<b>Brushed Lines</b>	<b>06</b>
<b>Drawn Lines</b>	<b>10</b>
<b>Level Set® Collection</b>	<b>14</b>
Natural Stones	16
Textured Stones	18
Natural Woodgrains	20
Textured Woodgrains	22
<b>Studio Set</b>	<b>24</b>
<b>Look Both Ways™ Collection</b>	<b>28</b>
Walk About	30
Walk of Life	32
Walk on By	33
Walk the Aisle	34
<b>Why our modular resilient LVT?</b>	<b>36</b>
<b>Specifications</b>	<b>40</b>

# Brushed Lines



LVT Brushed Lines Colour Mousse, Sandalwood Installed Ashlar

## Modern Refinement

In industrial spaces we find traces of the natural world. Worn edges. Organic forms. Dusty colours.

Brushed Lines has a diffused linear texture. It evokes the familiar qualities of hard surfaces, with a light-capturing quality that sparkles on the floor. Its subtle design features solid colours ranging from warm and cool neutrals to pops of earthy, mineral-like tones. Brushed Lines delivers modern refinement inspired by raw and natural motifs.



LVT Brushed Lines Colour Alabaster, Rouge Installed Ashlar

# Brushed Lines



A016-01 TALC



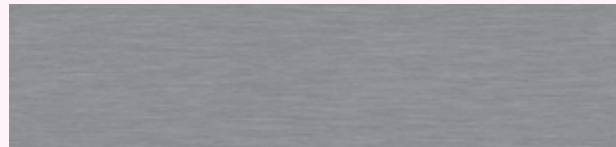
A016-07 POWDER



A016-02 ALABASTER



A016-08 SANDALWOOD



A016-03 MIST



A016-09 PARAFFIN



A016-04 GALENA



A016-10 BISQUE



A016-05 GRAPHITE



A016-11 MOUSSE



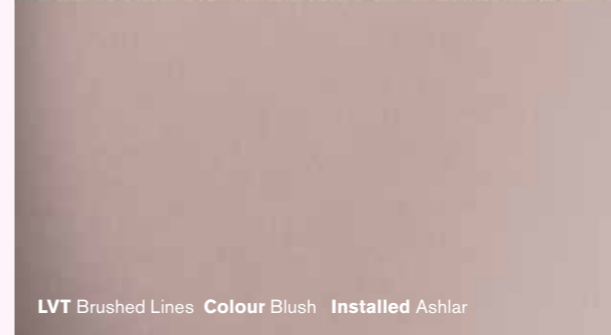
A016-06 KOHL



A016-12 SOFT SHADOW



LVT Brushed Lines Colour Blush Installed Ashlar



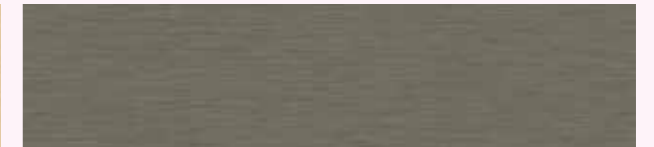
A016-13 BLUSH



A016-18 CELADON



A016-14 HONEY



A016-19 EUCALYPTUS



A016-15 HENNA



A016-20 TEAL OXIDE



A016-16 ROUGE



A016-21 ARBELLA



A016-17 DEW



A016-22 DEEP COBALT

## Drawn Lines

### Inspired by natural fractal patterns

Fractals are repeating patterns at different scales and nature's favourite pattern-making method. Similarly, Drawn Lines LVT layers filament-fine marks in varying weights and rhythms, creating a never-ending geometric pattern and a soft pooling of light and dark areas with no visible repeats. Drawn Lines is available in a palette of 10 colours, from warm to cool, with a thread of metallic adding shimmer and depth.



LVT Drawn Lines Colour Aquamarine, Onyx Installed Ashlar

LVT Drawn Lines Colour Smokey Quartz, Diamond Installed Ashlar



# Drawn Lines



LVT Drawn Lines Colour Silver, Amethyst Installed Ashlar



A009-10 OPAL



A009-09 DIAMOND



A009-02 TOPAZ



A009-08 SILVER



A009-03 BRONZE



A009-07 ONYX



A009-04 SMOKEY QUARTZ



A009-11 AMETHYST



A009-05 AMBER



A009-06 AQUAMARINE

# Level Set® Collection



LVT Level Set Natural Woodgrains Colour Beech Installed Ashlar

## The perfect compliment

The Level Set Collection features 4 types of patterns in a total of 31 colourways: Natural and Textured Woodgrains in the 25 x 100 cm Skinny Planks format, and Natural and Textured Stones and Pattern in the 50 x 50 cm square format. The look and feel of the wood patterns ranges from glossy to distressed, while the stone patterns fill the spectrum from subdued to outspoken. Hard and soft tiles come together to create beautiful design options, creating a new world of integrated flooring choices that make contemporary interiors come to life.



LVT Level Set Textured Stones Colour Distressed Concrete Installed Non Directional





A001-02 MARONE DARK MARBLE



A001-03 COOL IMPALA MARBLE



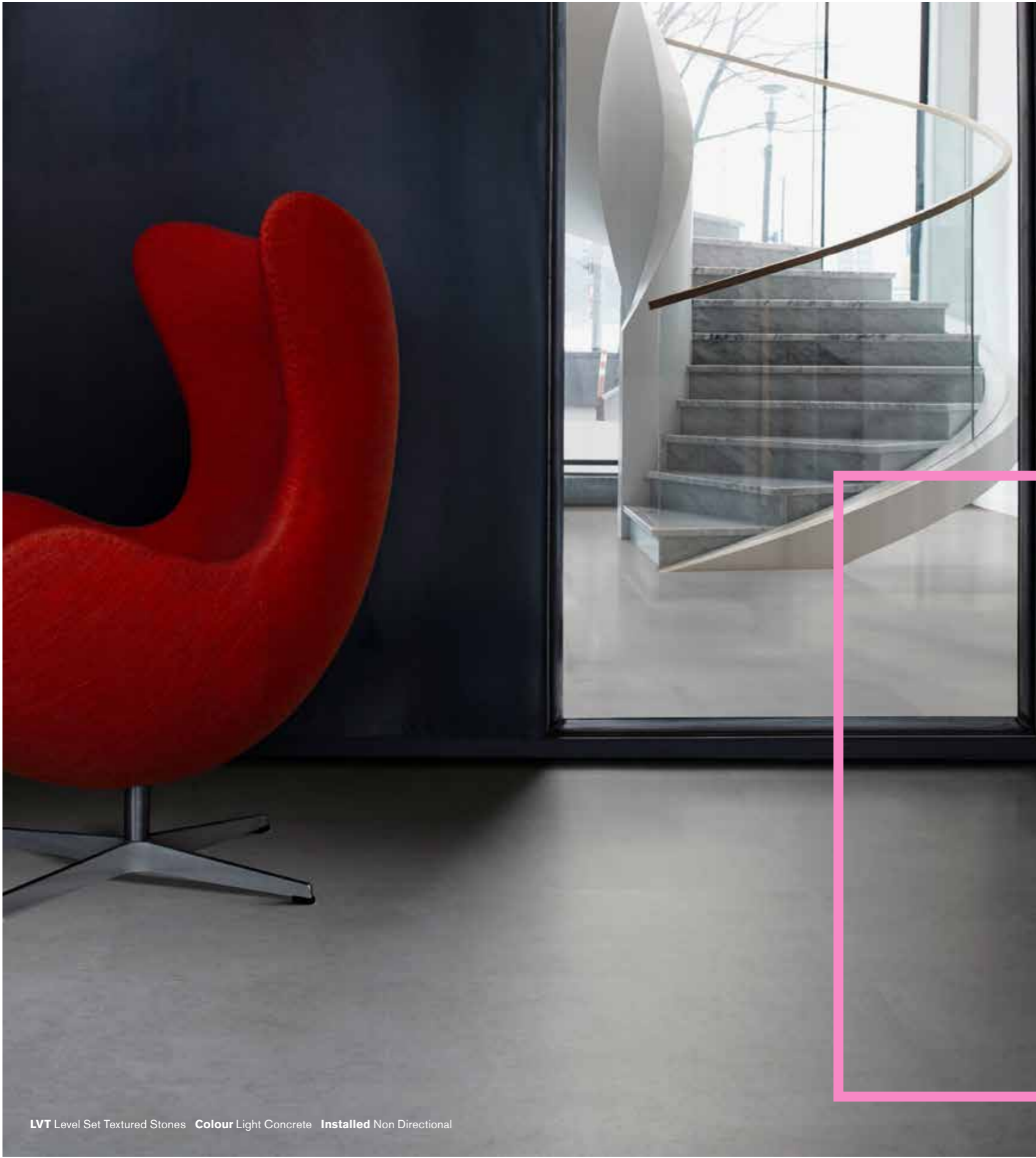
A001-04 WARM IMPALA MARBLE



A001-07 TRAVERTINE

**Level Set® Collection**  
**Natural Stones**





LVT Level Set Textured Stones Colour Light Concrete Installed Non Directional



LVT Level Set Textured Stones Colour Dark Concrete Installed Non Directional

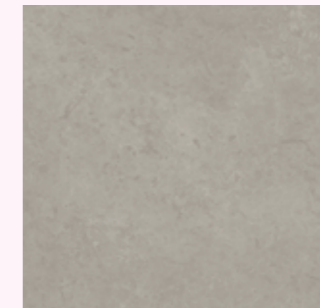
# Level Set® Collection Textured Stones



A003-02 COOL POLISHED CEMENT



A003-04 EMPERADOR GRAY



A003-08 LIGHT CONCRETE



A003-09 MEDIUM CONCRETE



A003-10 DARK CONCRETE



A003-11 DISTRESSED CONCRETE



A002-04 BEECH



A002-05 STORM



A002-06 WINTER GREY



A002-07 WASHED WHEAT



A002-08 SAND DUNE



A002-10 TEAK



A002-11 WASHED MAPLE



A002-12 CEDAR



A002-14 BAMBOO

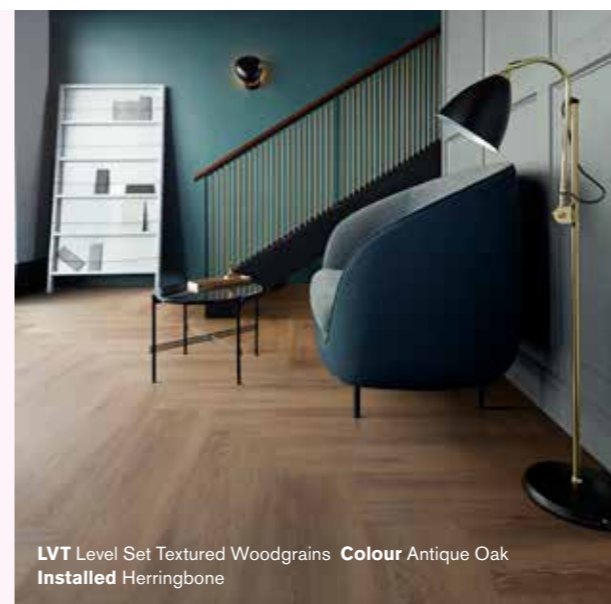


**Level Set® Collection  
Natural Woodgrains**



LVT Level Set Textured Woodgrains Colour Rustic Oak Installed Ashlar

# Level Set® Collection Textured Woodgrains



LVT Level Set Textured Woodgrains Colour Antique Oak  
Installed Herringbone



A004-04 DISTRESSED BLACK WALNUT



A004-05 GREY DUNE



A004-06 ANTIQUE LIGHT OAK



A004-07 WHITE WASH



A004-15 ANTIQUE OAK



A004-17 SILVER DUNE



A004-19 ANTIQUE ASH OAK



A004-20 RUSTIC CASHEW



A004-21 RUSTIC OAK



A004-22 RUSTIC HICKORY



A004-26 SUGARPINE



A004-27 HEMLOCK

## Studio Set

### Colour your space

Studio Set is a collection that's all about colour. You have 13 shades to choose from – ranging from intense, vibrant brights to soft, versatile neutral tones. A very subtle wood-grain pattern gives depth, but it's the colours everyone will notice. Use them in combination to create different compositions. Or make one bold choice across an entire area.



LVT Studio Set Colour Slate Installed Ashlar



A007-01 SILVERLIGHT



A007-02 PEWTER



A007-03 PEPPER



A007-04 ESPRESSO



A007-05 TITANIUM



A007-06 MUSHROOM



A007-07 LIME



A007-08 IRIS



A007-09 OCEAN



A007-10 POPPY



A007-11 MANDARIN



A007-12 MARIGOLD



A007-13 SLATE

# Studio Set



LVT Studio Set Colour Mushroom, Slate Installed Design by Tile

## Look Both Ways™ Collection

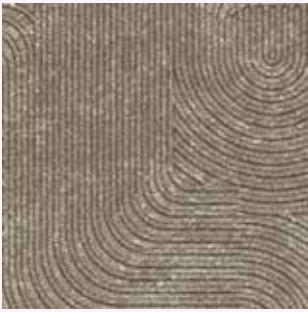
### Purity and playfulness

Look Both Ways is a collection of LVT and carpet tile patterns combining Zen-like purity with playfulness. Marrying purpose and function with your intention, these styles create landscapes that perform and delight in infinite ways.

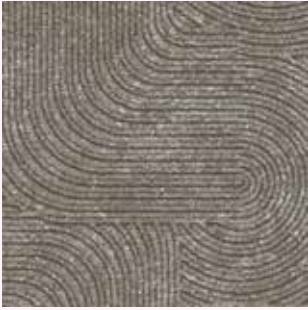
Walk of Life, the bedrock of the LVT collection, is gritty, not polished. Sharing the same urban grey palette, Walk the Aisle sparkles with a luminescent fleck that energizes the surface. Walk About appears carved in ways that conjure pattern-love from the 1920s, 1980s, and today. And finally Walk on By is a vision of pure joy in brights & neutrals. Step, walk or run, but definitely look both ways for design inspiration.



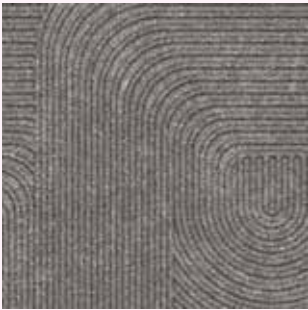
LVT Walk the Aisle Colour Cool Ash Installed Monolithic



A014-01 WARM ASH



A014-02 PUMICE

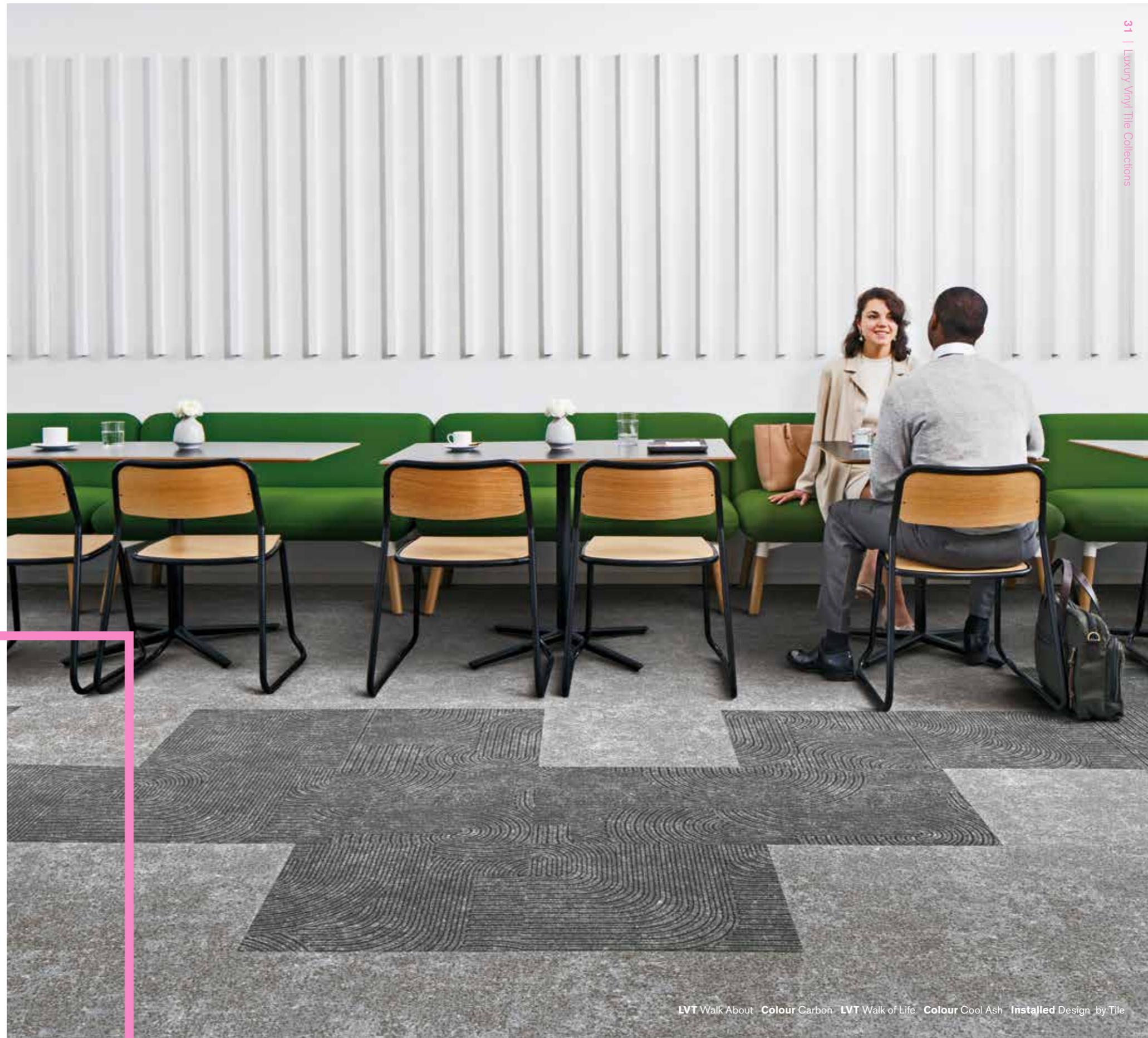


A014-03 COOL ASH



A014-04 CARBON

# Walk About

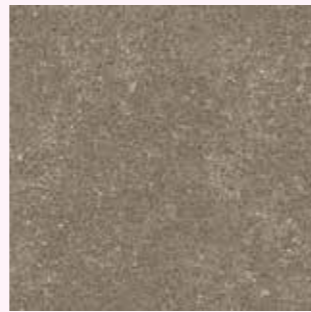




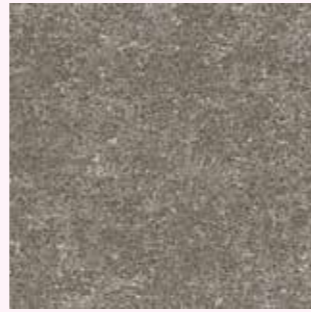
# Walk of Life



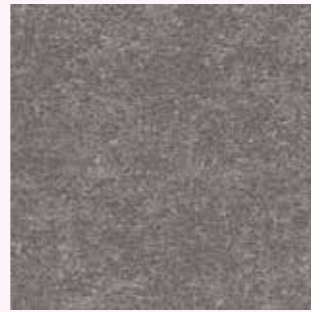
LVT Walk of Life Colour Cool Ash  
LVT Walk About Colour Cool Ash  
Installed Design by Tile



A012-01 WARM ASH



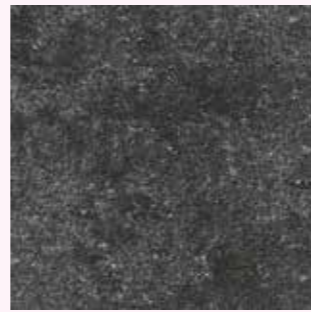
A012-02 PUMICE



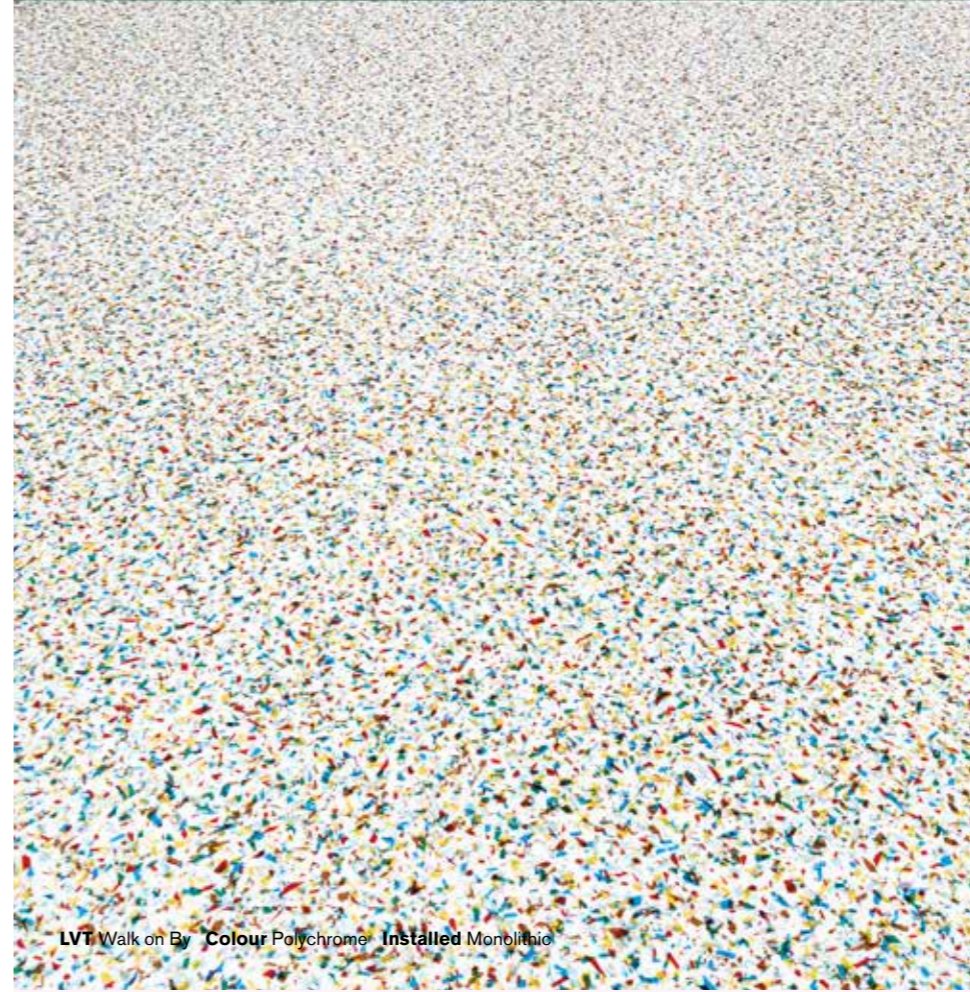
A012-03 COOL ASH



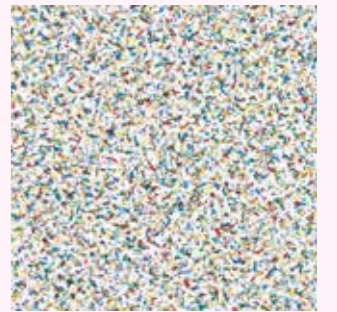
A012-04 CARBON



A012-05 CHARCOAL



LVT Walk on By Colour Polychrome Installed Monolithic



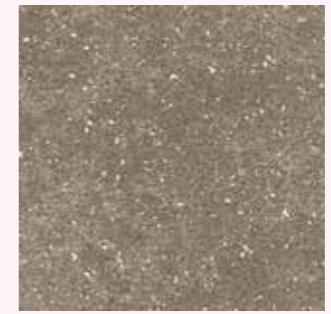
A015-01 POLYCHROME



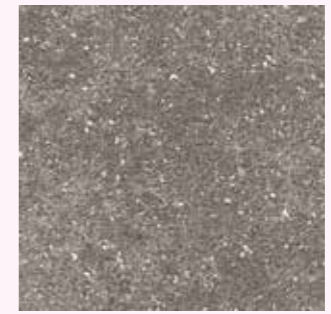
A015-02 MONOCHROME

# Walk on By

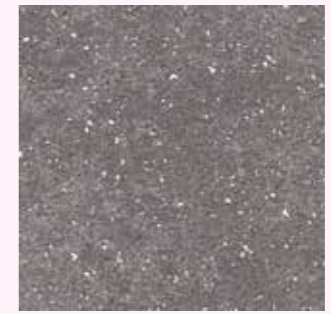
Walk the Aisle



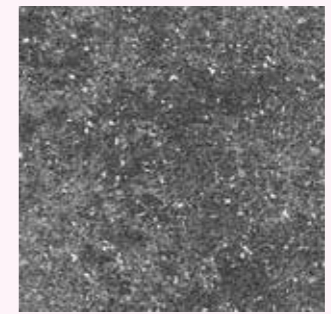
A013-01 WARM ASH



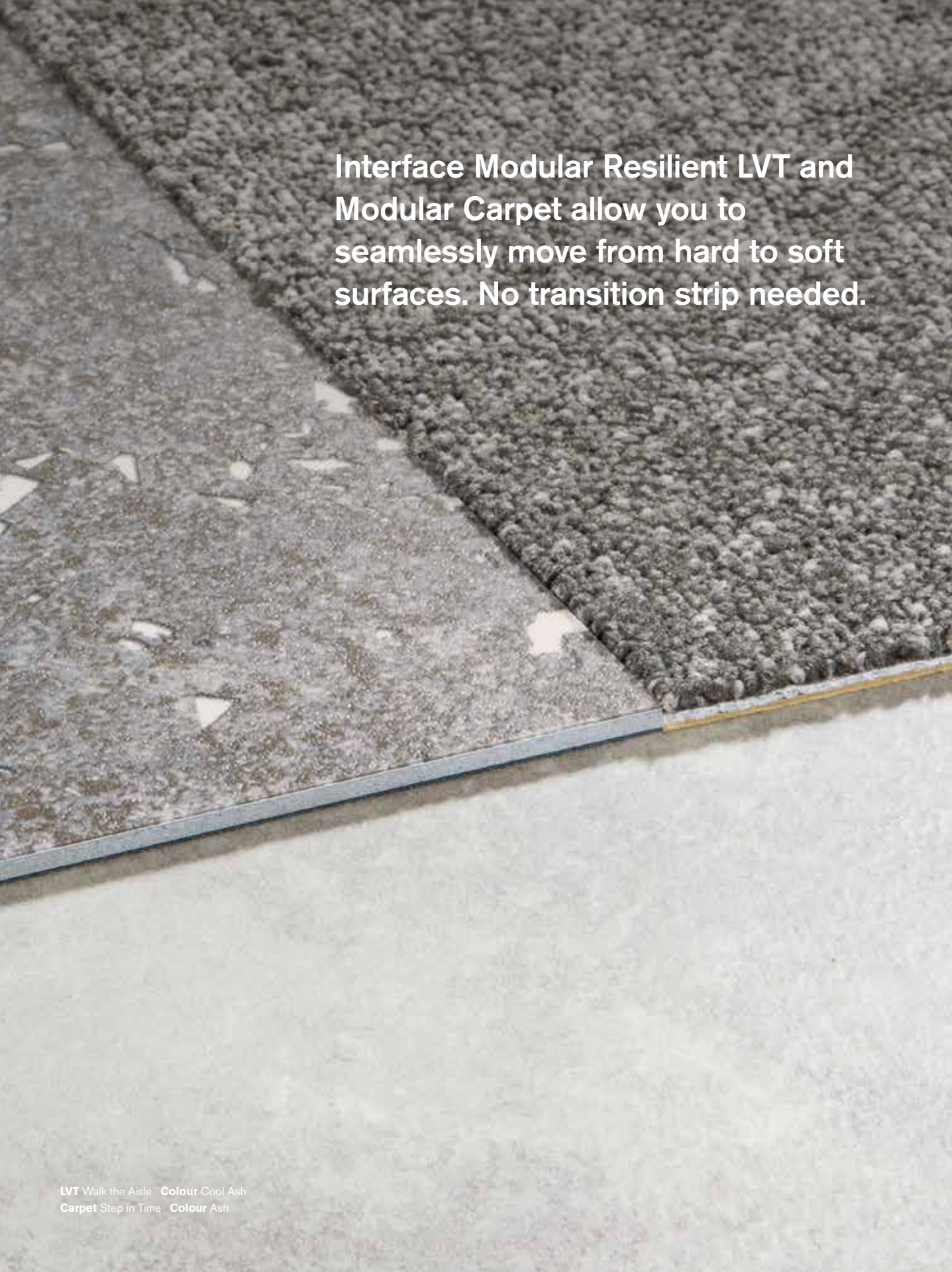
A013-02 PUMICE



A013-03 COOL ASH



A013-04 CARBON



Interface Modular Resilient LVT and Modular Carpet allow you to seamlessly move from hard to soft surfaces. No transition strip needed.

## Why Our Modular Resilient LVT?

### Integrated System.

Say goodbye to transition strips and doubling up. Our modular resilient floorings are made to work as a system with our modular carpet tile. The compatible size and height of our products allows you to integrate modular carpet for an inset rug or an adjacent field – no transition strip required. You'll avoid doubling up on materials and save cost.

### Real Flexibility.

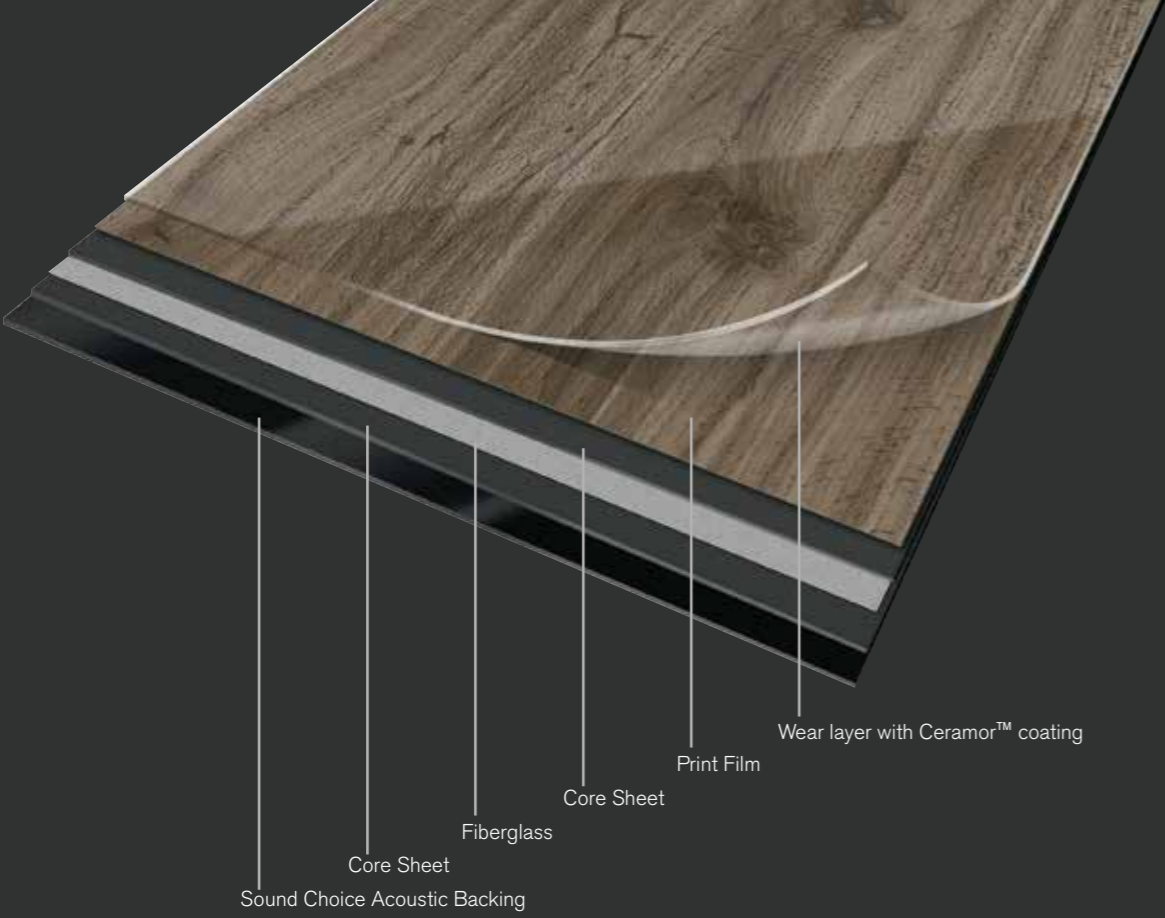
Create a unique look that lasts. Interface modular resilient LVT makes it easy to extend the life of your floor. From simple maintenance like damp mopping to selectively replacing damaged tiles, your flooring investment will stand the test of time - beautifully and effortlessly.

### Circular System.

Keep flooring out of the landfill. Our modular resilient LVT is produced with a controlled material stream so it can be reclaimed and recycled into our GlasBac™ RE recycled content backing through our ReEntry® program. And all our LVT products contain 39% recycled content, and are carbon neutral across their full product life cycle.

### Noise Reduction.

Less distractions. Interface is helping create **+Positive spaces™** with our LVT with Sound Choice™ backing, offering you best-in-class performance for reduced impact sound and floor to floor sound transmission.



## High Performance from Top to Bottom.

From our Ceramor™ Top Coat to our Sound Choice™ backing, we've designed our modular resilient LVT to provide peak performance in even the most challenging work environment while also providing superior sound absorption.

**Abrasion Resistance.** Our Ceramor ceramic bead coating provides a durable finish that resists scratching and scuffing so your floors look better longer. Embossing adds texture to further enhance durability.

**A Strong Core.** Incorporating a fiberglass layer between two core sheets provides optimal dimensional stability and flexibility, allowing for a fully modular installation and the ability to move and update with ease.

**Quiet Comfort.** With an IIC rating of 57 our Sound Choice backing provides superior protection against vertical sound transfer. Minimizing noise enhances workplace productivity and creates more usable, comfortable spaces.



- A016 Brushed Lines
- A009 Drawn Lines
- A002 Level Set® Collection Natural Woodgrains
- A004 Level Set® Collection Textured Woodgrains
- A007 Studio Set

Product Construction	High Performance Luxury Vinyl Tile
Wear Layer Thickness	0.55 mm
Total Thickness (Metric)	4.5 mm
Classification	EN 651 Class 33 (heavy contract) EN 651 Class 42 (light industrial general)
Acoustic Impact Noise Reduction	ISO 140.8 $\Delta L_w = 16\text{dB}$
Finish	CERAMOR™ UV Stabilized Ceramic Bead Coating
Nominal Dimensions	25cm x 100cm

### Performance Specifications

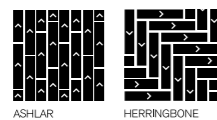
Critical Heat Flux	AS ISO 9239-1	>7kW/m <sup>2</sup>
Smoke Rate	AS ISO 9239-1	<750%min
Size, Tolerance	ISO 24342	>400 mm < 0.35 mm
	ISO 24342	<400 mm < 0.25 mm
Dimensional Stability	ISO 23999	<0.25%
	Thickness	ISO 24346 Average value + 0.20mm
Resistance to Light	ISO 105-B02	≥6
Resistance to Heat	ASTM F1514	$\Delta E < 8$ avg Max
Resistance to Chemicals	EN-ISO 26987	Pass
Reaction to Fire	EN ISO 13501-1	Class BFI-S1
VOC Test	ISO 10580	Pass
Flexibility	ISO 24344 Method A	Pass
Static Load	ASTM F970	≤0.005" with 1500 psi
Castor chair	ISO 4918	Pass
Thermal Conductivity	EN 12667	0.16 W/mK
Static Electrical	EN 1815	<2kV
Slip Resistance	AS 4586:2014	See page 52

### Environmental Specifications

Ingredients and Life Cycle Impacts	EPD for LVT
Sustainability Assessment	NSF/ANSI 332, Meets Certification Guidelines
LEED v4	Contributes to IEQ: Low Emitting Materials; M&R: EPD and EPR
End of Life	Fully Recyclable to carpet tile Backing Recycling

### Technical Information

Installation	See Interface LVT Installation Guidelines online
Maintenance	See Interface LVT Maintenance Guidelines online
Reclamation	View details on our ReEntry® Program
Warranty	15 Year Standard LVT Product Warranty
Installation Methods	Ashlar, Herringbone



ASHLAR HERRINGBONE



GreenRate | Level A  
trust brands™

- A001 Level Set® Collection Natural Stones
- A003 Level Set® Collection Textured Stones
- A014 Walk About
- A012 Walk of Life
- A015 Walk on By
- A013 Walk the Aisle

Product Construction	High Performance Luxury Vinyl Tile
Wear Layer Thickness	0.55 mm
Total Thickness (Metric)	4.5 mm
Classification	EN 651 Class 33 (heavy contract) EN 651 Class 42 (light industrial general)
Acoustic Impact Noise Reduction	ISO 140.8 $\Delta L_w = 16\text{dB}$
Finish	CERAMOR™ UV Stabilized Ceramic Bead Coating
Nominal Dimensions	50cm x 50cm

### Performance Specifications

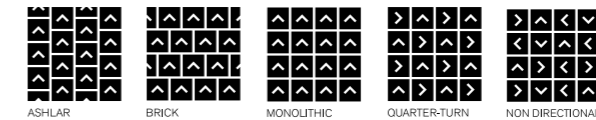
Critical Heat Flux	AS ISO 9239-1	>7kW/m <sup>2</sup>
Smoke Rate	AS ISO 9239-1	<750%min
Size, Tolerance	ISO 24342	>400 mm < 0.35 mm
	ISO 24342	<400 mm < 0.25 mm
Dimensional Stability	ISO 23999	<0.25%
	Thickness	ISO 24346 Average value + 0.20mm
Resistance to Light	ISO 105-B02	≥6
Resistance to Heat	ASTM F1514	$\Delta E < 8$ avg Max
Resistance to Chemicals	EN-ISO 26987	Pass
Reaction to Fire	EN ISO 13501-1	Class BFI-S1
VOC Test	ISO 10580	Pass
Flexibility	ISO 24344 Method A	Pass
Static Load	ASTM F970	≤0.005" with 1500 psi
Castor chair	ISO 4918	Pass
Thermal Conductivity	EN 12667	0.16 W/mK
Static Electrical	EN 1815	<2kV
Slip Resistance	AS 4586:2014	see page 52

### Environmental Specifications

Ingredients and Life Cycle Impacts	EPD for LVT
Sustainability Assessment	NSF/ANSI 332, Meets Certification Guidelines
LEED v4	Contributes to IEQ: Low Emitting Materials; M&R: EPD and EPR
End of Life	Fully Recyclable to carpet tile Backing Recycling

### Technical Information

Installation	See Interface LVT Installation Guidelines online
Maintenance	See Interface LVT Maintenance Guidelines online
Reclamation	View details on our ReEntry® Program
Warranty	15 Year Standard LVT Product Warranty
Installation Methods	Ashlar, Brick, Monolithic, Quarter-Turn, Non Directional



ASHLAR BRICK MONOLITHIC QUARTER-TURN NON DIRECTIONAL



GreenRate | Level A  
trust brands™

All product specifications reflect averages derived from product sample testing, are subject to normal manufacturing and testing tolerances and inherent pattern variances, and may be changed without notice. For more information about these and other important attributes of the product(s) described herein, including recycled content and product warranty information please see our full LVT product disclaimer.

# Slip Resistance

Product	Colour	Slip Resistance Ramp Test - R value
<b>Brushed Lines</b>	A016-01 Talc	R10
	A016-02 Alabaster	R10
	A016-03 Mist	R10
	A016-04 Galena	R10
	A016-05 Graphite	R10
	A016-06 Kohl	R10
	A016-07 Powder	R10
	A016-08 Sandalwood	R10
	A016-09 Paraffin	R10
	A016-10 Bisque	R10
	A016-11 Mousse	R10
	A016-12 Soft Shadow	R10
	A016-13 Blush	R10
	A016-14 Honey	R10
	A016-15 Henna	R10
	A016-16 Rouge	R10
	A016-17 Dew	R10
	A016-18 Celadon	R10
	A016-19 Eucalyptus	R10
	A016-20 Teal Oxide	R10
	A016-21 Arbella	R10
	A016-22 Deep Cobalt	R10
<b>Drawn Lines</b>	A009-02 Topaz	R10
	A009-03 Bronze	R10
	A009-04 Smokey Quartz	R10
	A009-05 Amber	R10
	A009-06 Aquamarine	R10
	A009-07 Onyx	R10
	A009-08 Silver	R10
	A009-09 Diamond	R10
	A009-10 Opal	R10
	A009-11 Amethyst	R10
	<b>Level Set Collection Natural Stones</b>	A001-02 Marone Dark Marble
A001-03 Cool Impala Marble		R9
A001-04 Warm Impala Marble		R9
A001-07 Travertine		R10
<b>Level Set Collection Textured Stones</b>	A003-02 Cool Polished Cement	R9
	A003-04 Emperador Gray	R9
	A003-08 Light Concrete	R10
	A003-09 Medium Concrete	R10
	A003-10 Dark Concrete	R10
	A003-11 Distressed Concrete	R10
<b>Level Set Collection Natural Woodgrains</b>	A002-04 Beech	R10
	A002-05 Storm	R10
	A002-06 Winter Grey	R10
	A002-07 Washed Wheat	R10
	A002-08 Sand Dune	R10
	A002-10 Teak	R10
	A002-11 Washed Maple	R10
	A002-12 Cedar	R10
	A002-14 Bamboo	R10

Product	Colour	Slip Resistance Ramp Test - R value
<b>Level Set Collection Textured Woodgrains</b>	A004-04 Distressed Black Walnut	R10
	A004-05 Grey Dune	R10
	A004-06 Antique Light Oak	R10
	A004-07 White Wash	R10
	A004-15 Antique Oak	R10
	A004-17 Silver Dune	R10
	A004-19 Antique Ash Oak	R10
	A004-20 Rustic Cashew	R10
	A004-21 Rustic Oak	R10
	A004-22 Rustic Hickory	R10
	A004-26 Sugarpine	R10
	A004-27 Hemlock	R10
	<b>Studio Set</b>	A007-01 Silverlight
A007-02 Pewter		R10
A007-03 Pepper		R10
A007-04 Espresso		R10
A007-05 Titanium		R10
A007-06 Mushroom		R10
A007-07 Lime		R10
A007-08 Iris		R10
A007-09 Ocean		R10
A007-10 Poppy		R10
A007-11 Mandarin		R10
A007-12 Marigold		R10
A007-13 Slate		R10
<b>Walk About</b>	A014-01 Warm Ash	R10
	A014-03 Cool Ash	R10
	A014-03 Cool Ash	R10
	A014-04 Carbon	R10
<b>Walk of Life</b>	A012-01 Warm Ash	R10
	A012-02 Pumice	R10
	A012-03 Cool Ash	R10
	A012-04 Carbon	R10
	A012-05 Charcoal	R10
<b>Walk on By</b>	A015-01 Polychrome	R10
	A015-02 Monochrome	R10
<b>Walk the Aisle</b>	A013-01 Warm Ash	R10
	A013-02 Pumice	R10
	A013-03 Cool Ash	R10
	A013-04 Carbon	R10

All product specifications reflect averages derived from product sample testing, are subject to normal manufacturing and testing tolerances and inherent pattern variances, and may be changed without notice. For more information about these and other important attributes of the product(s) described herein, including recycled content and product warranty information please see our full LVT product disclaimer.



**Carbon Neutral Floors™**

**Visit [interface.com/hospitality](https://interface.com/hospitality)  
to find more collections**

## **Our Asia Pacific Offices**

### **Australia**

Interface Australia  
local toll free: 1800 804 361

### **India**

Interface India  
tel: +91 80 4613 1313

### **South East Asia**

Interface Asia  
tel: +65 6478 1510

### **South Korea**

Interface South Korea  
tel: +82 2 555 1734

### **Japan**

Interface Japan  
tel: +81 3 5733 5211

### **Beijing**

Interface China  
tel: +86 10 6590 7810

### **Hong Kong**

Interface China  
tel: +852 2802 0838

### **Shanghai**

Interface China  
tel: +86 21 6340 3868

