



ChromaFlex Collection

Interface®



splash

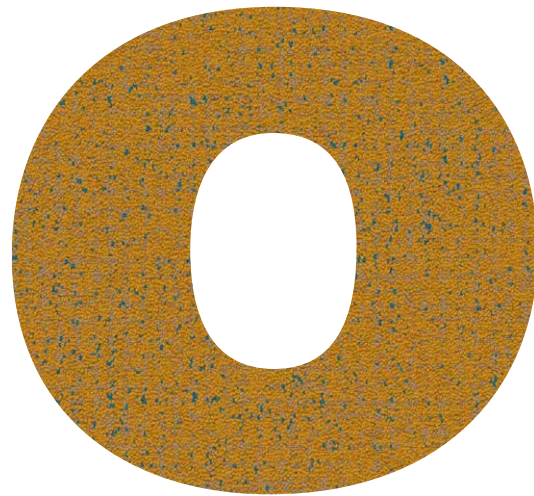
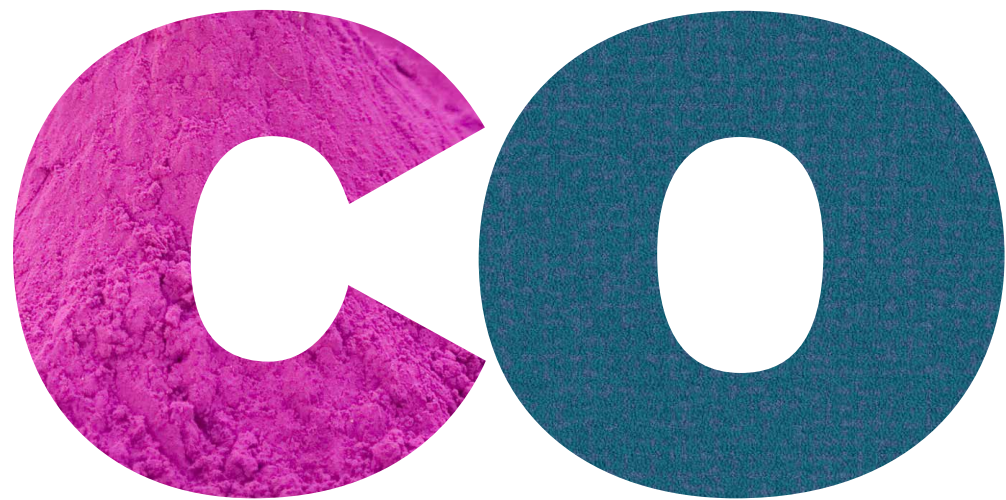


sprinkle



spray

Inspired by the experimental nature of artists,
from traditional to contemporary,
who explore the emotional language of



to encourage greater artistic expression.

ChromaFlex™

Soft graduating tones weave their way through strong, robust forms, creating a dynamic contrast between textures, pigments and forms. A colourful celebration of bold profiles and free-flowing organic styles.

A collection inspired by the experimental nature of artists, from traditional to contemporary, who explore the emotional language of colour to encourage greater artistic expression.

ChromaFlex is an opportunity to use a rich colour palette to study the relationship between light and shade, texture and tone, colour and emotion.

An opportunity to be more playful with colour, a modular system with 3 design options that work together from Base to Dots 1 to Dots 2.

Like all Interface products, the ChromaFlex collection is 100% carbon neutral. Leveraging the power of design to help encourage a low carbon future.

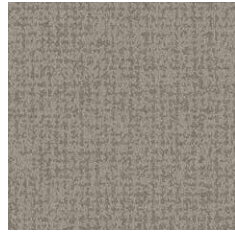
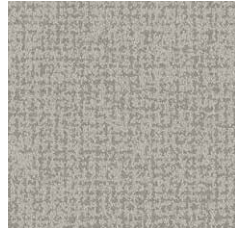


ChromaFlex is breaking new ground, a dynamic collection available in both planks and squares. A system designed to work with our entire range, enabling you to breathe new life into existing concepts and use bursts of colour to tell the hidden story of architecture in new and inspiring ways.



Base

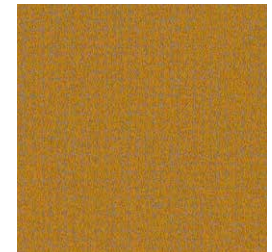
ChromaBase features 24 block colours, in bright and neutral tones, to help articulate the space.



Carpet Tile ChromaBase Colour Bone, Driftwood Installed Design By Tile
Carpet Tile ChromaBase Colour Parchment Installed Ashlar

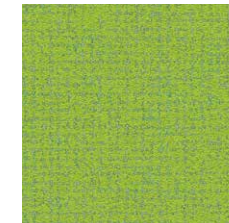


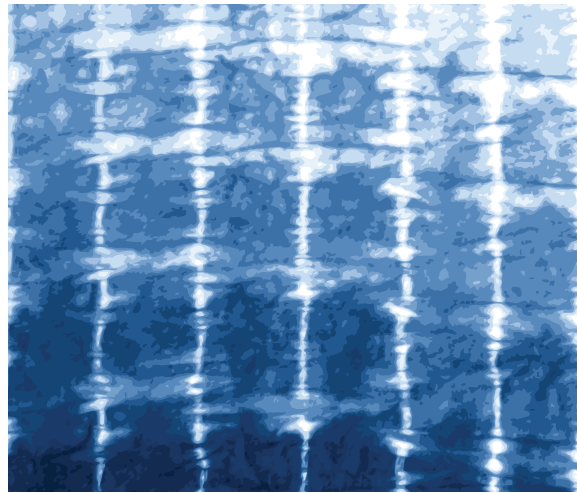
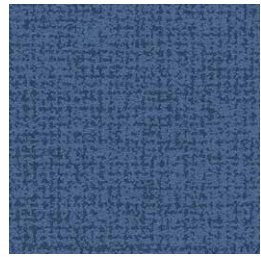
Carpet Tile ChromaBase Colour Spice Installed Monolithic
LVT Studio Set Colour Espresso Installed Ashlar





Carpet Tile ChromaBase **Colour** Charcoal, Lime, Cherry **Installed** Ashlar
Carpet Plank ChromaBase **Colour** Spice **Installed** Design By Tile





Carpet Tile ChromaBase **Colour** Blueprint, Mako **Installed** Ashlar
LVT Textured Stones **Colour** Cool Polished Cement **Installed** Monolithic

Dots

Create tonal drift alongside the base by using the sparse organic movement of ChromaDots 1. Further inject a spirited acceleration of tone with ChromaDots 2, allowing colours to drift and merge, bringing them to life.



splash

ChromaBase



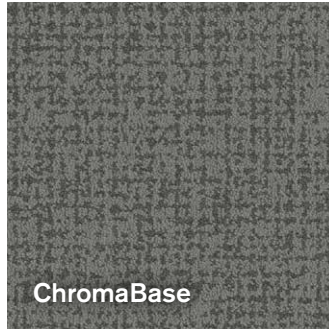
sprinkle

ChromaDots 1

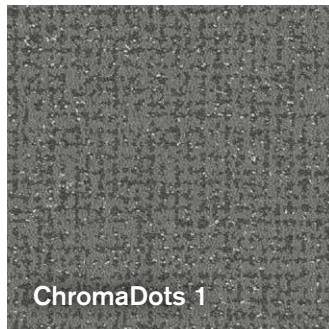


spray

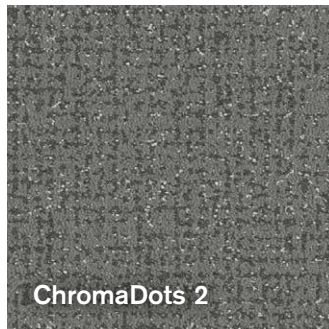
ChromaDots 2



ChromaBase



ChromaDots 1



ChromaDots 2

Creating tonal drift

ChromaFlex is designed to look at the bigger picture, how it's going to interact within the environment and with the people that use it. A flexible framework that enables you to install three diverse styles with one process.

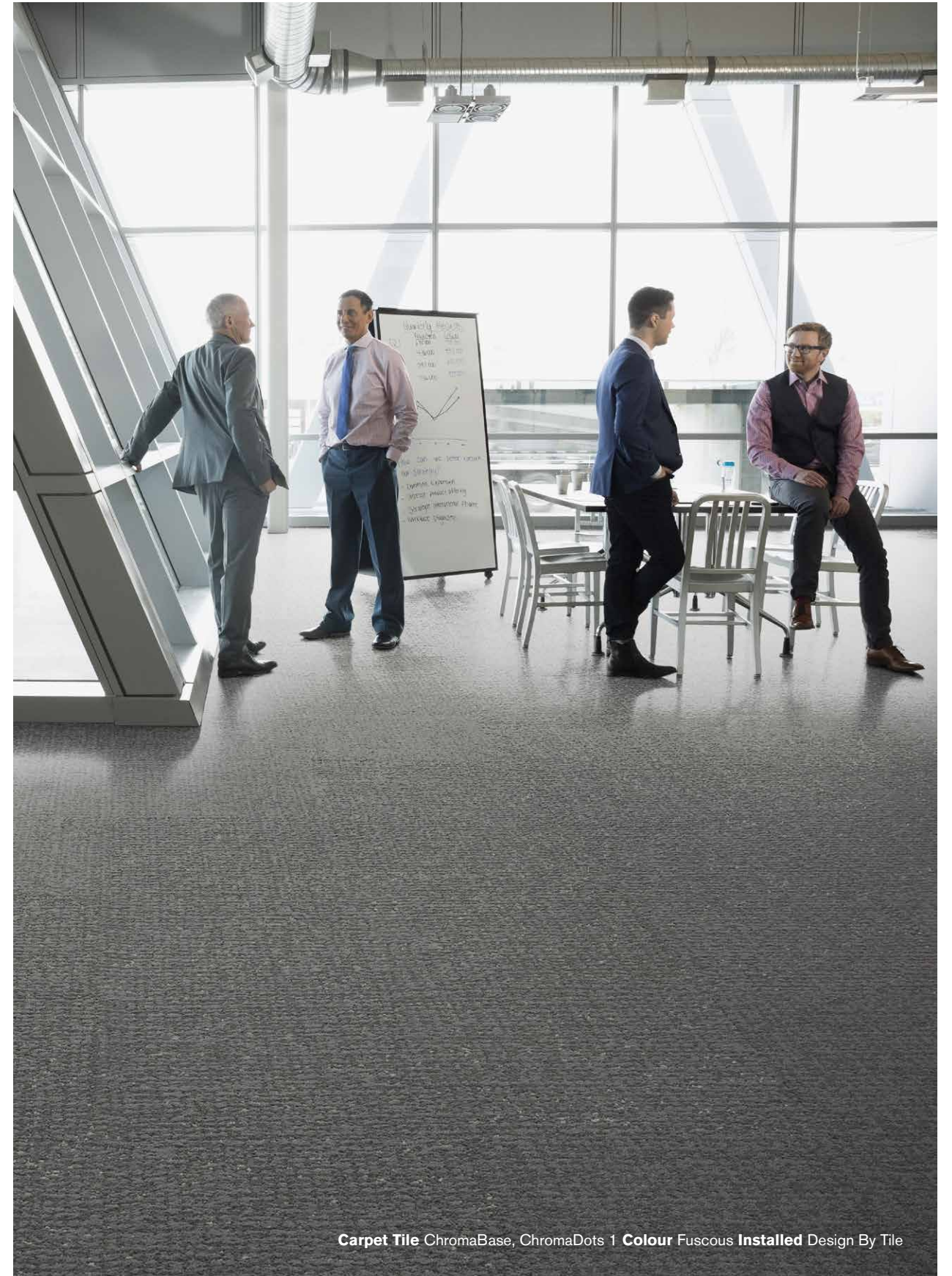
The ChromaFlex colour palette encourages experimentation, integrating 24 BASE tiles with 12 from DOTS 1 and 12 from DOTS 2.

Tonal drift emerges from the strong foundations of the BASE pattern, a diverse array of vibrant and neutral block tones.

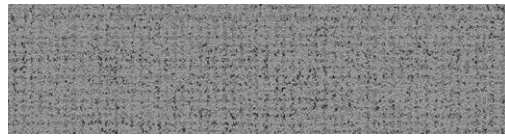
The introduction of DOTS 1, a sparse, organic design, encourages these rich, solid shapes to smoothly transition into free-flowing forms.

DOTS 2, a spirited and energetic acceleration of tone, enables the design to transition smoothly into more robust, full colour formations.

A chance to be more playful with colour, allowing colours to drift and merge. To stimulate movement and bringing colours to life.







Carpet Tile ChromaBase **Carpet Plank** ChromaDots 2 **Colour** Slate **Installed** Ashlar
Carpet Tile Step This Way **Colour** Ash **Installed** Monolithic





Carpet Plank ChromaBase, ChromaDots 1 **Colour Slate Installed** Ashlar
Carpet Plank Merged Hues **Colour Reef Installed** Design By Tile



ChromaFlex Neutrals, squares and planks

ChromaBase



ChromaDots 1 and ChromaDots 2



Squares = 50cm x 50cm
Planks = 25cm x 100cm

ChromaFlex Brights, squares and planks

ChromaBase



ChromaDots 1 and ChromaDots 2

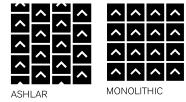


Squares = 50cm x 50cm
Planks = 25cm x 100cm

Specifications

ChromaBase

Style Code	2468
Product Construction	Tufted Textured Loop
Yarn System	100% Solution Dyed Nylon
Machine Gauge	Tapestry
Pile Thickness	3.0mm +/- 0.5mm
Total Thickness	7.0mm +/- 0.5mm
Tile Size	50x50cm, 25x100cm
Area of Use	Commercial – General Use
Lifetime Antimicrobial	Intersept®
Soil/Stain Protection	Protekt ² ®
Installation Methods 50x50cm	Ashlar, Monolithic
Installation Methods 25x100cm	Ashlar



ChromaDots 1

Style Code	2469
Product Construction	Tufted Textured Loop
Yarn System	100% Solution Dyed Nylon
Machine Gauge	Tapestry
Pile Thickness	3.0mm +/- 0.5mm
Total Thickness	7.0mm +/- 0.5mm
Tile Size	50x50cm, 25x100cm
Area of Use	Commercial – General Use
Lifetime Antimicrobial	Intersept®
Soil/Stain Protection	Protekt ² ®
Installation Methods 50x50cm	Ashlar
Installation Methods 25x100cm	Ashlar



ChromaDots 2

Style Code	2470
Product Construction	Tufted Textured Loop
Yarn System	100% Solution Dyed Nylon
Machine Gauge	Tapestry
Pile Thickness	3.0mm +/- 0.5mm
Total Thickness	7.0mm +/- 0.5mm
Tile Size	50x50cm, 25x100cm
Area of Use	Commercial – General Use
Lifetime Antimicrobial	Intersept®
Soil/Stain Protection	Protekt ² ®
Installation Methods 50x50cm	Ashlar
Installation Methods 25x100cm	Ashlar



All of our products are carbon neutral and our programme is verified by an independent third party, Bureau Veritas.



All Interface manufacturing facilities in the Asia Pacific region maintain registration to ISO 9001 Quality Management Systems and ISO 14001 Environmental Management Systems.

Production specifications are subject to normal manufacturing tolerances and may be changed without notice. Slight variation in colour among different production lots are normal and should be considered in the overall installation plan. Products covered by manufacturer's written warranty only. All other warranties, including without limitation any implied warranties of merchantability or fitness for particular purpose, are hereby disclaimed. Contact your representative for written warranty information.

www.interface.com

Australia

Interface Australia
local toll free: 1800 804 361

India

Interface India
tel: +91 80 4613 1313

South East Asia

Interface Asia
tel: +65 6478 1510

South Korea

Interface South Korea
tel: +82 2 555 1734

Japan

Interface Japan
tel: +81 3 5733 5211

Beijing

Interface China
tel: +86 10 6590 7810

Hong Kong

Interface China
tel: +852 2802 0838

Shanghai

Interface China
tel: +86 21 6340 3868

02/2020
SF0123T0



Climate change is undeniable. And reversible. Our mission is to prove it. Join the #ClimateTakeBack and help create a climate fit for life.