

www.interface.com

Australia

Interface Australia
local toll free: 1800 804 361

India

Interface India
tel: +91 80 4613 1313

South East Asia

Interface Asia
tel: +65 6478 1510

South Korea

Interface South Korea
tel: +82 2 555 1734

Japan

Interface Japan
tel: +81 3 5733 5211

Beijing

Interface China
tel: +86 10 6590 7810

Hong Kong

Interface China
tel: +852 2802 0838

Shanghai

Interface China
tel: +86 21 6340 3868

02/2020
SF0088T0



Climate change is undeniable. And reversible. Our mission is to prove it.
Join the #ClimateTakeBack and help create a climate fit for life.

Aerial Planks

Interface®

Aerial Planks AE311 | AE313

A view of the city from above gives us the unique opportunity to witness connectivity; a web of links that both fascinates and assures us. In Aerial, a simple neutral palette travels new paths when several hues tangle together in each colourway, bringing this inspiration to life.

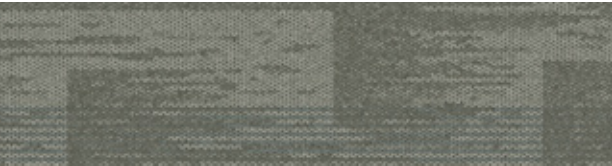
The Aerial Planks series comprise an intricate base pattern, and a muted accent option. The base style, Aerial AE311™ features organic brush stroke patterns while its partner Aerial AE313™ introduces a subtle wash of colour to this neutral foundation. These two work beautifully hand-in-hand to provide a fluid flow of colour and pattern from one space to the next.

Expand further with Aerial AE310™, our 50cm x 50cm square version of the Aerial pattern, for an added layer of design. With its multi-faceted design and coordinated palette, the styles of Aerial create a network of design possibilities that is simply waiting to be discovered!

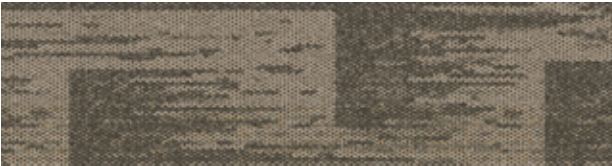




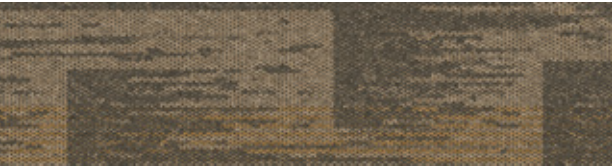
AE311 Colourline



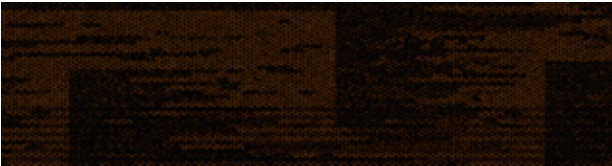
7922-001-000 Mist



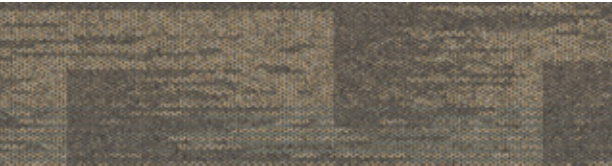
7922-002-000 Fog



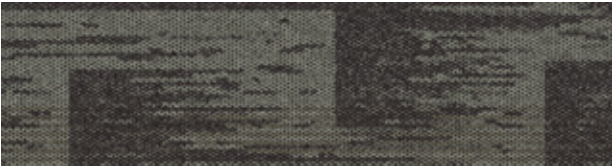
7922-003-000 Taupe



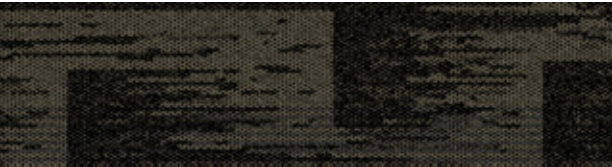
7922-004-000 Chestnut



7922-005-000 Greige



7922-006-000 Iron



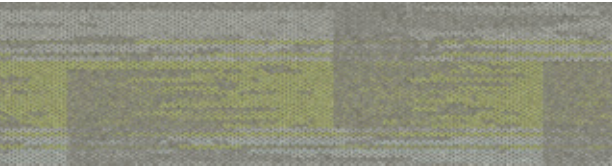
7922-007-000 Smoke



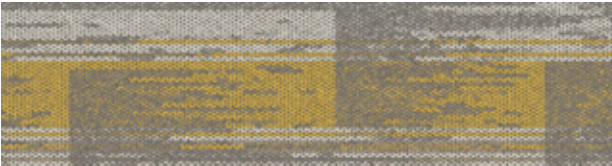
7922-008-000 Ink



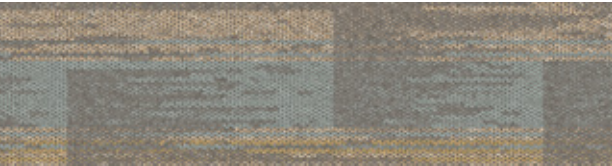
AE313 Colourline



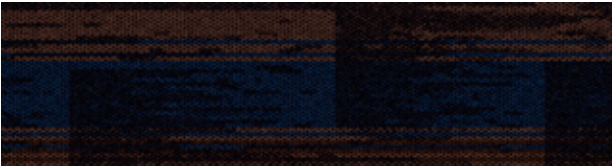
8187-001-000 Mist/Aloe



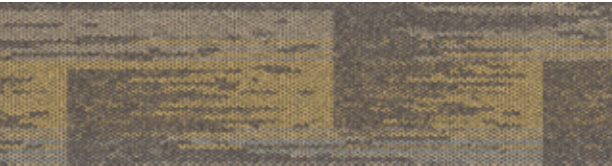
8187-002-000 Fog/Citrus



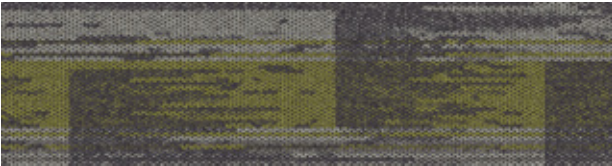
8187-003-000 Taupe/Flannel



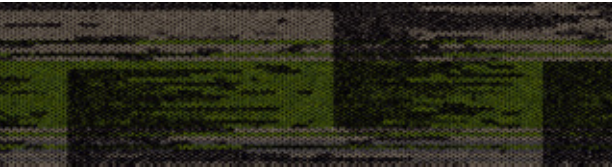
8187-004-000 Chestnut/Navy



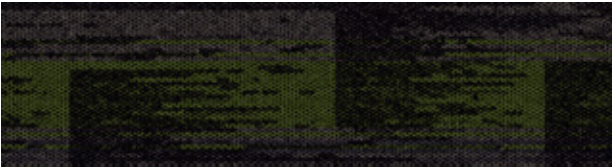
8187-005-000 Greige/Honey



8187-006-000 Iron/Prairie

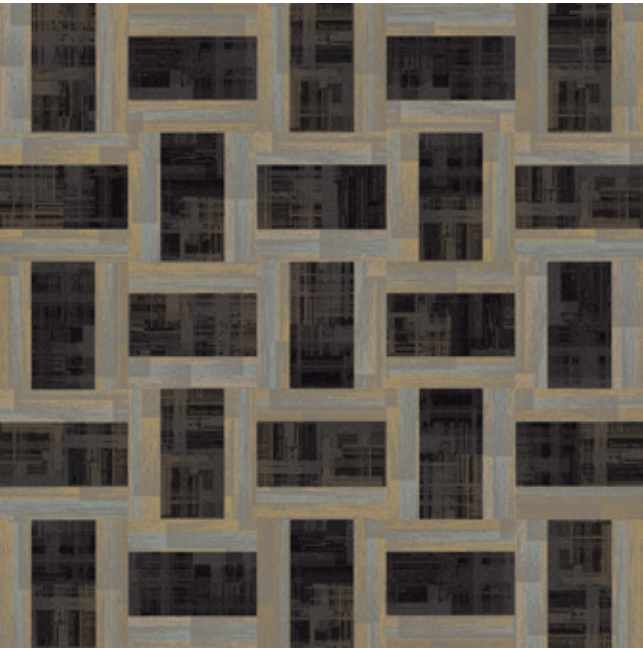


8187-007-000 Smoke/Apple

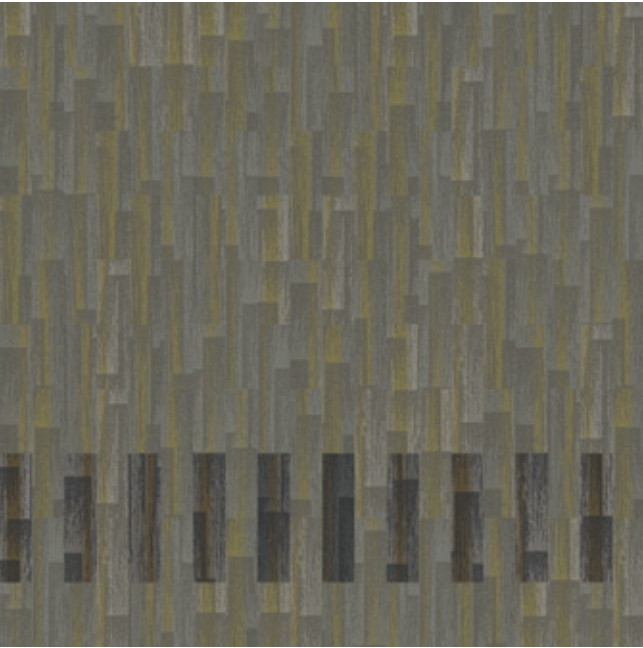


8187-008-000 Ink/Olive

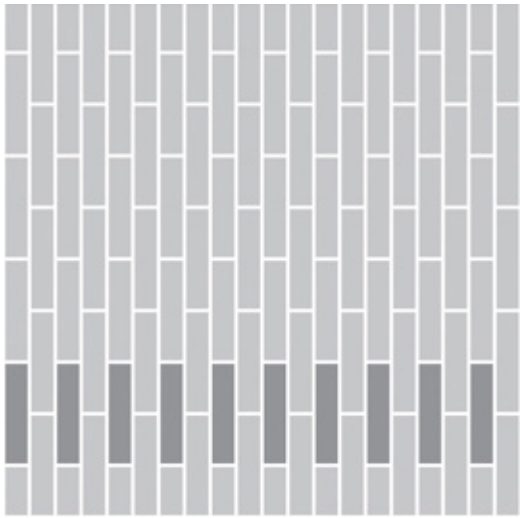
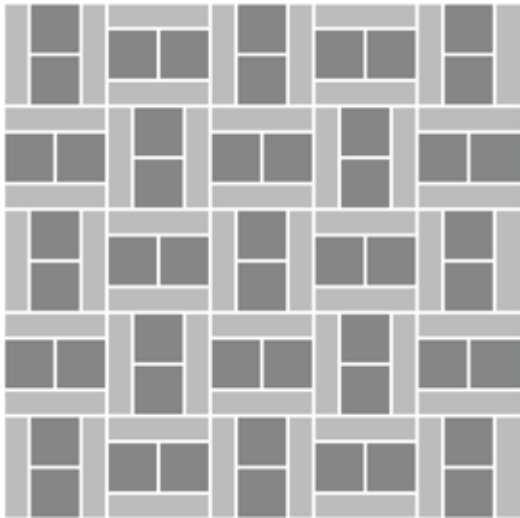
Design Ideas Below are floor layouts showing how to create the design ideas shared in some of the images featured in this brochure.



Product AE313 Colour Taupe/Flannel
Product AE310 Colour Smoke
Installed Pattern By Tile

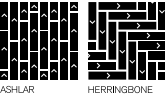


Product AE313 Colours Mist/Aloe, Iron/Prairie Installed Pattern By Tile



Specifications

AE311™	i2
Style Code	7922 Pattern 000
Product Construction	Tufted Textured Loop
Yarn System	100% Recycled Solution Dyed Nylon
Machine Gauge	1/12
Pile Thickness	3.0mm +/- 0.5mm
Total Thickness	6.5mm +/- 0.5mm
Tile Size	25cm x 100cm
Area of Use	Commercial – Heavy Use
Lifetime Antimicrobial	Intersept®
Soil/Stain Protection	Protekt2®
Installation Methods	Ashlar, Herringbone



AE313™	i2
Style Code	8187 Pattern 000
Product Construction	Tufted Textured Loop
Yarn System	100% Recycled Solution Dyed Nylon
Machine Gauge	1/12
Pile Thickness	3.0mm +/- 0.5mm
Total Thickness	6.5mm +/- 0.5mm
Tile Size	25cm x 100cm
Area of Use	Commercial – Heavy Use
Lifetime Antimicrobial	Intersept®
Soil/Stain Protection	Protekt2®
Installation Methods	Ashlar, Herringbone



All Interface manufacturing facilities in the Asia Pacific region maintain registration to ISO 9001 Quality Management Systems and ISO 14001 Environmental Management Systems.

Production specifications are subject to normal manufacturing tolerances and may be changed without notice. Slight variation in colour among different production lots are normal and should be considered in the overall installation plan. Products covered by manufacturer's written warranty only. All other warranties, including without limitation any implied warranties of merchantability or fitness for particular purpose, are hereby disclaimed. Contact your representative for written warranty information.