

# Biosphere Collection


Interface®



Zoom out. Way out.





An aerial photograph of a tropical coastline. The water is a vibrant turquoise color, transitioning to a deeper blue as it extends into the distance. The shoreline is a mix of white sand beaches and dense, lush green vegetation. The perspective is from a high angle, looking down at the ocean and the land.


## To the very edge of Earth's reach

Look down from that perspective, and what you see is a fusion of blurred edges. Colours, on this planetary scale, blend and fade beautifully as only nature can. Subtle washes of tone colouring the amazing contrasts of land, ocean and sky in the biosphere, the zone that supports every aspect of life on Earth. Covering each continent, merging all regions and nations into one. Discerning no man-made edges, continuously working over aeons of time.

Now more than ever, we know that damage to our biosphere creates untold problems for us and the life we share our planet with. For today and tomorrow, human industry simply has to evolve and turn towards preserving our fragile life support system. In creating our products we have put this awareness front and centre.

This is a path Interface has been on for 25 years now – one journey which leads us forward. From our mission of having no negative impact on the environment to today's Climate Take Back™, it will continue to inspire us to do only good for our planet. It's a truly positive story that will continue to evolve and inspire.





## Biosphere™

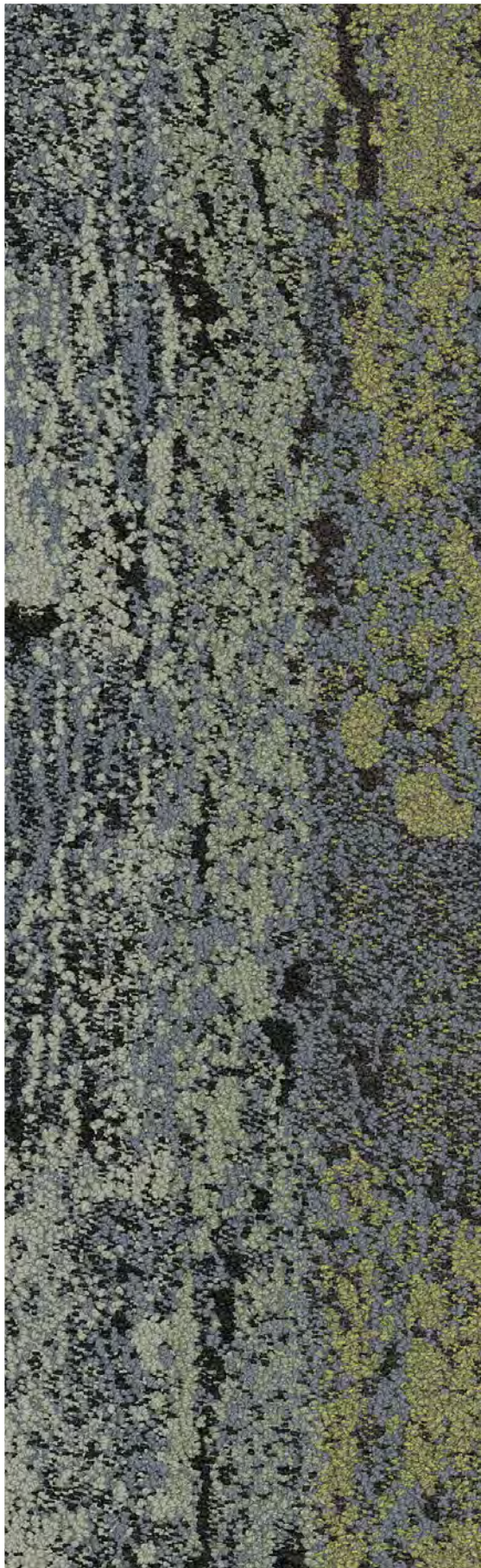
---

Indigenous transitions of the layers between ocean and land, the gradations of low to highlands and the tonal shifts from mountain ranges towards ever changing skies inspired our latest collection, Biosphere. Like breathtaking views from the far edges of the earth, its textures merge with subtle layering effects. By adding a beautiful range of colour variation, it captures nature's most inspiring elements.

Biosphere is 100% carbon neutral, like all Interface products. Our Carbon Neutral Floors™ help you make a positive impact on people's lives and on the biosphere. It is another key step towards Climate Take Back™, our mission to run our business in a way that reverses global warming. As an industrial and technology leader, Interface always continues to reach further. To demonstrate in every way how a business can be highly successful yet do no harm – and even give back to nature. How every business can.

It's time to make preserving the biosphere everyone's priority. To strive for a more sustainable future, because our lives depend on it.





Transitions of colour  
within layers of water





Carpet Tile Merged Hues, Stippled Hues Colour Reef Installed Ashlar  
LVT Studio Set Colour Mushroom Installed Ashlar

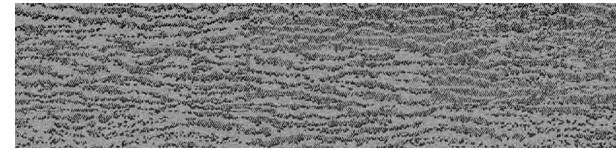




Carpet Tile Merged Hues, Stippled Hues Colour Reef Installed Ashlar  
LVT Studio Set Colour Mushroom Installed Ashlar

## Biosphere Water Inspired Colourline

---



Brushed Hues 2402-001-000 Reef



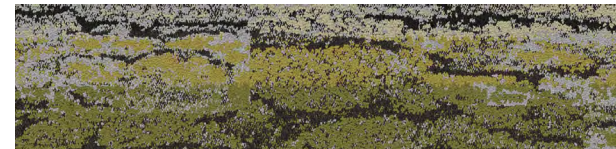
Brushed Hues 2402-002-000 Marsh



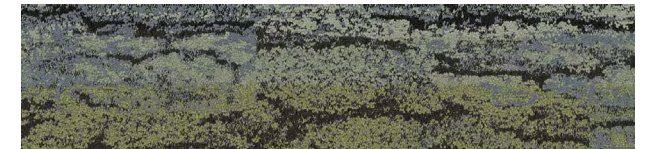
Stippled Hues 2401-001-000 Reef



Stippled Hues 2401-002-000 Marsh



Merged Hues 2400-001-000 Reef

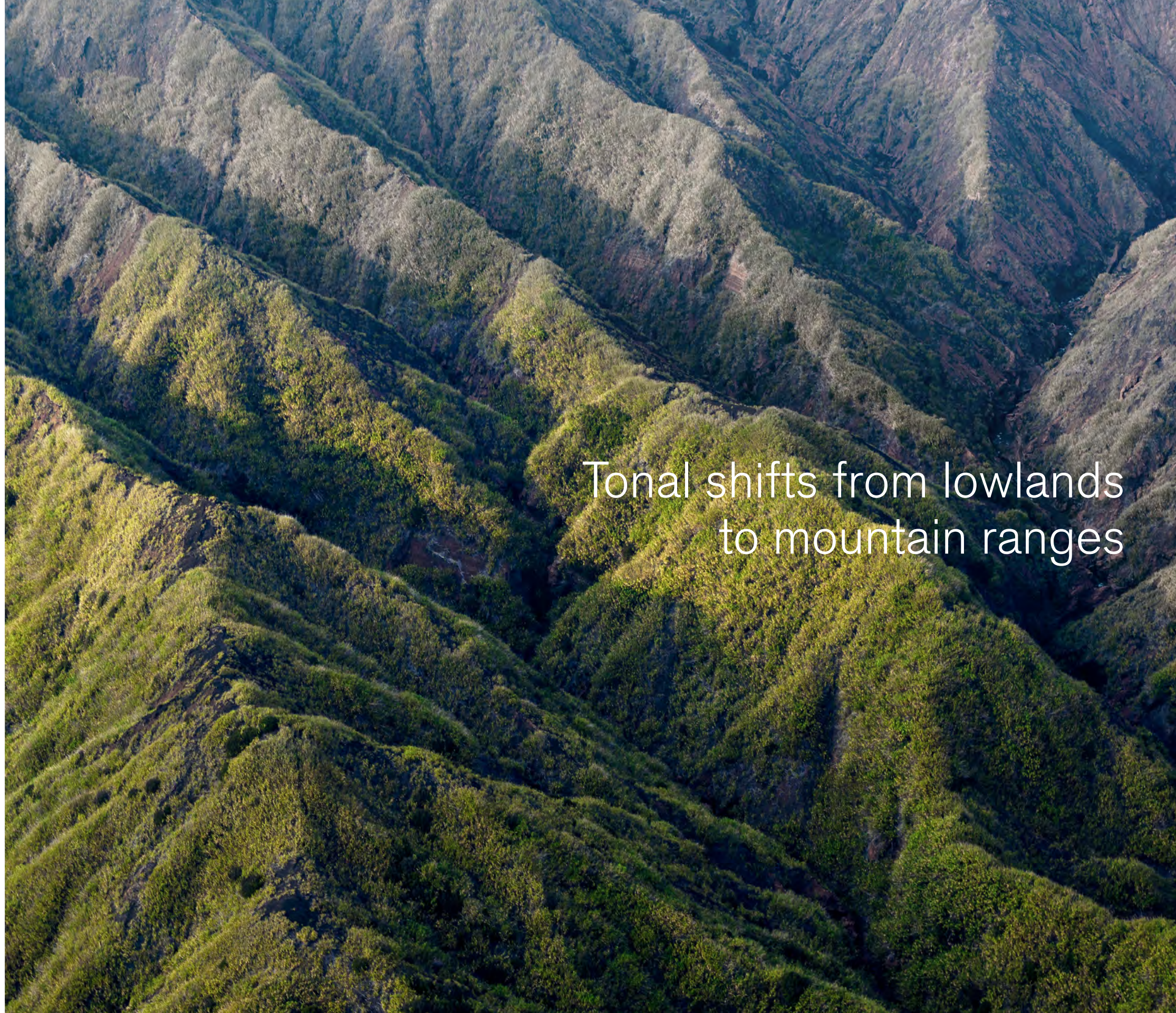
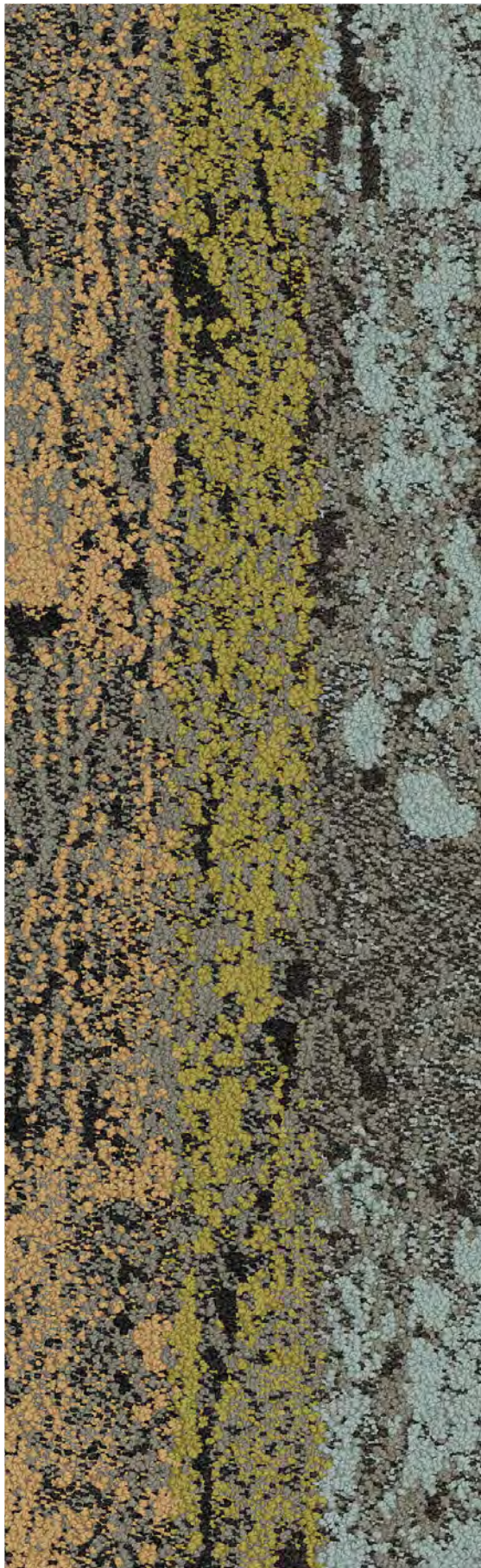


Merged Hues 2400-002-000 Marsh









Tonal shifts from lowlands  
to mountain ranges









## Biosphere Land Inspired Colourline

---



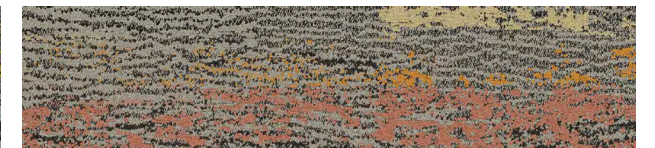
Brushed Hues 2402-003-000 Meadow



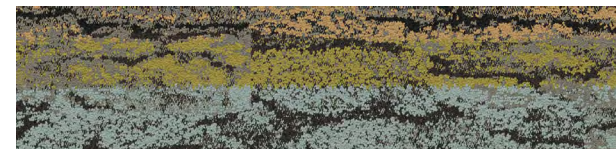
Brushed Hues 2402-004-000 Clay



Stippled Hues 2401-003-000 Meadow



Stippled Hues 2401-004-000 Clay



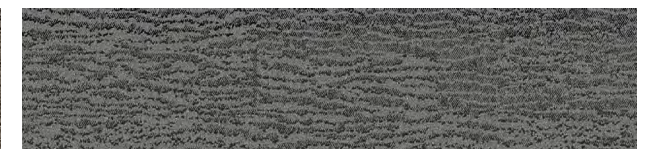
Merged Hues 2400-003-000 Meadow



Merged Hues 2400-004-000 Clay



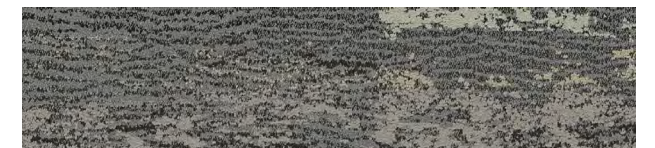
Brushed Hues 2402-005-000 Prairie



Brushed Hues 2402-006-000 Tundra



Stippled Hues 2401-005-000 Prairie



Stippled Hues 2401-006-000 Tundra



Merged Hues 2400-005-000 Prairie



Merged Hues 2400-006-000 Tundra





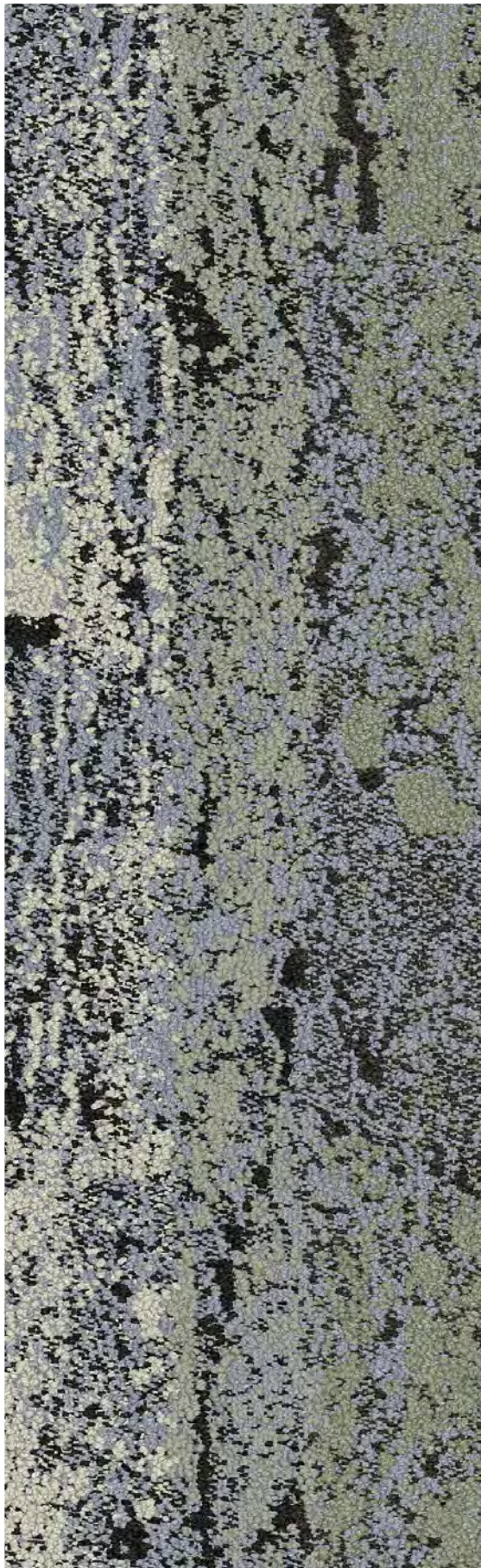
**Carpet Tile** Merged Hues, Stippled Hues, Brushed Hues **Colour** Tundra **Installed** Ashlar  
**Carpet Tile** HN830 **Colour** Cobalt **Installed** Pattern by Tile  
**LVT Studio Set** **Colour** Silver Light **Installed** Ashlar





**Carpet Tile** Merged Hues, Stippled Hues **Colour** Tundra **Installed** Ashlar  
**Carpet Tile** HN830 **Colour** Kiwi **Installed** Ashlar





Ever changing fading  
gradations in the sky



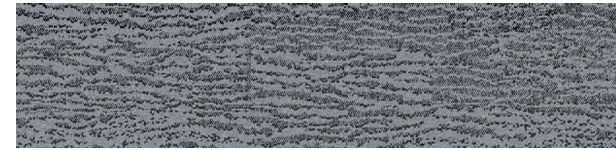






## Biosphere Sky Inspired Colourline

---



Brushed Hues 2402-007-000 Azure



Brushed Hues 2402-008-000 Dusk



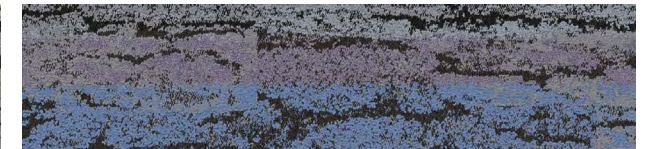
Stippled Hues 2401-007-000 Azure



Stippled Hues 2401-008-000 Dusk



Merged Hues 2400-007-000 Azure



Merged Hues 2400-008-000 Dusk





Carpet Tile Stippled Hues, Brushed Hues Colour Azure Installed Ashlar  
LVT Studio Set Colour Ocean Installed Ashlar





**Brushed Hues**

---



**Stippled Hues**

---

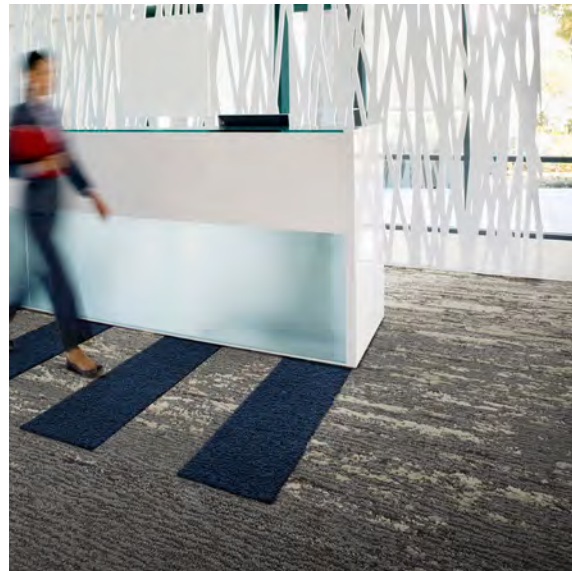
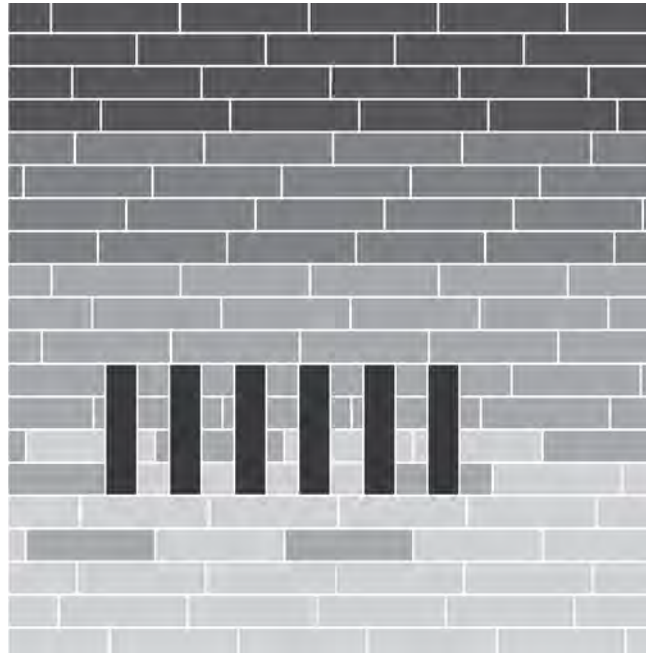


**Merged Hues**

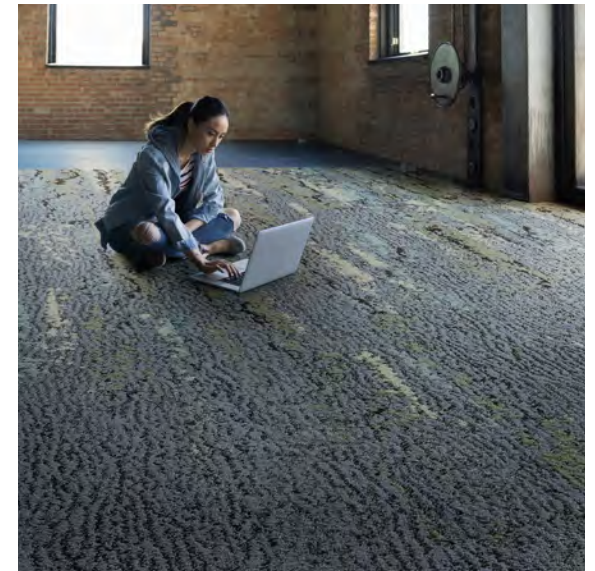
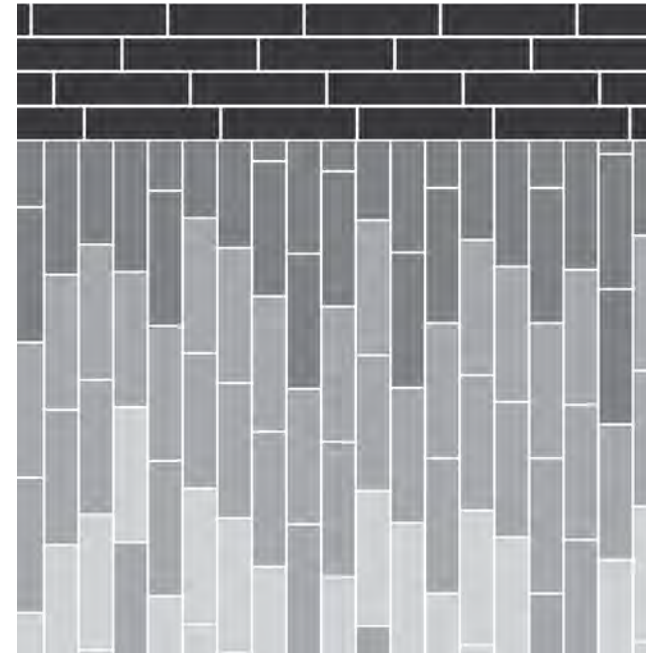
---



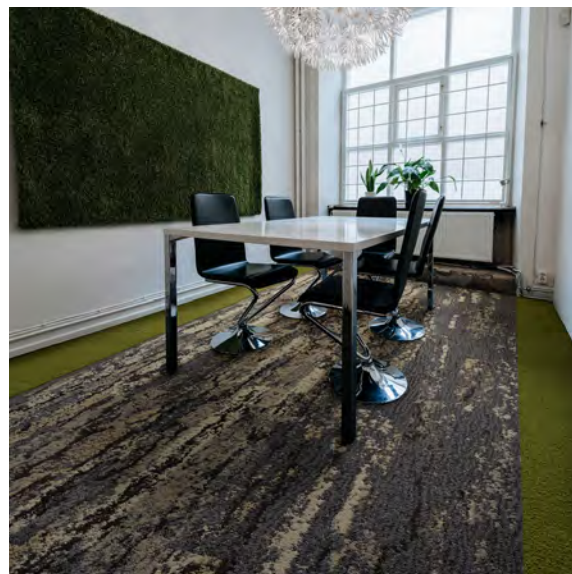
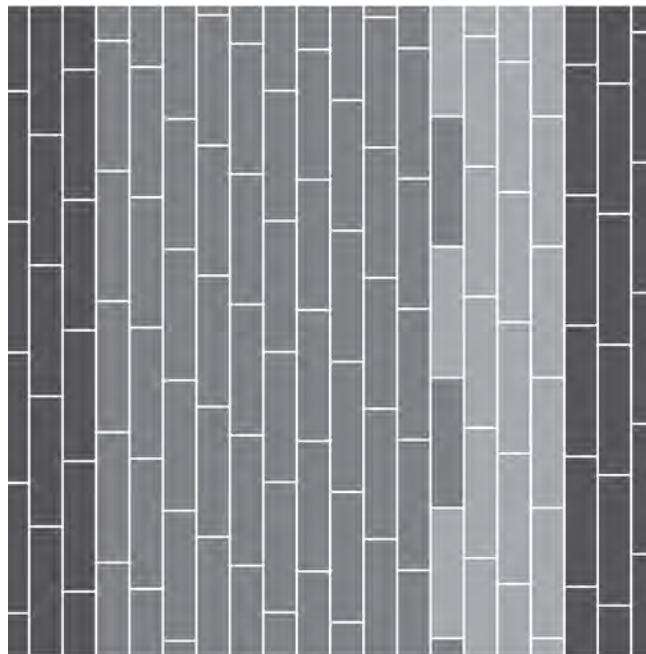
Design Ideas Below are floor layouts showing how to create the design ideas shared in several of the images featured in this brochure.



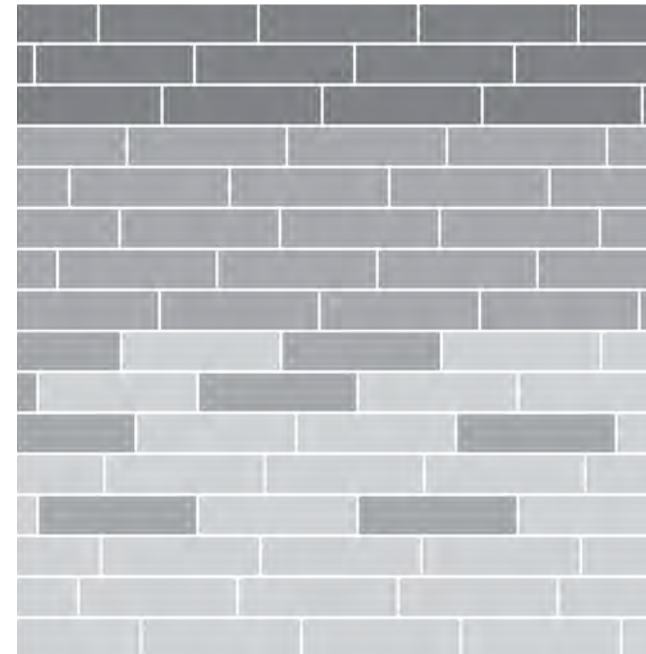
**CARPET TILE** MERGED HUES, STIPPLED HUES, BRUSHED HUES **COLOUR TUNDRA INSTALLED ASHLAR**  
**CARPET TILE** HN830 **COLOUR COBALT INSTALLED PATTERN BY TILE LVT STUDIO SET COLOUR SILVER LIGHT INSTALLED ASHLAR**



**CARPET TILE** STIPPLED HUES, BRUSHED HUES **COLOUR AZURE INSTALLED ASHLAR**  
**LVT STUDIO SET COLOUR OCEAN INSTALLED ASHLAR**



**CARPET TILE** MERGED HUES, STIPPLED HUES **COLOUR TUNDRA INSTALLED ASHLAR**  
**CARPET TILE** HN830 **COLOUR KIWI INSTALLED ASHLAR**



**CARPET TILE** MERGED HUES, STIPPLED HUES **COLOUR REEF INSTALLED ASHLAR**  
**LVT STUDIO SET COLOUR MUSHROOM INSTALLED ASHLAR**



## Specifications

### Brushed Hues

Style Code	2402 Pattern 000
Product Definition	Tufted Textured Loop
Yarn/Fibre	100% Solution Dyed Nylon
Machine Gauge	Tapestry
Pile Thickness	2.5mm +/- 0.5mm
Total Thickness	6.5mm +/- 0.5mm
Tile Size	25x100cm
Area of Use	Commercial – Heavy Use
Lifetime Antimicrobial	Intersept®
Soil/Stain Protection	Protekt2®
Installation Methods	Ashlar



### Stippled Hues

Style Code	2401 Pattern 000
Product Definition	Tufted Textured Loop
Yarn/Fibre	100% Solution Dyed Nylon
Machine Gauge	Tapestry
Pile Thickness	2.5mm +/- 0.5mm
Total Thickness	6.5mm +/- 0.5mm
Tile Size	25x100cm
Area of Use	Commercial – Heavy Use
Lifetime Antimicrobial	Intersept®
Soil/Stain Protection	Protekt2®
Installation Methods	Ashlar



### Merged Hues

Style Code	2400 Pattern 000
Product Definition	Tufted Textured Loop
Yarn/Fibre	100% Solution Dyed Nylon
Machine Gauge	Tapestry
Pile Thickness	2.5mm +/- 0.5mm
Total Thickness	6.5mm +/- 0.5mm
Tile Size	25x100cm
Area of Use	Commercial – Heavy Use
Lifetime Antimicrobial	Intersept®
Soil/Stain Protection	Protekt2®
Installation Methods	Ashlar



Carbon Neutral Floors™

All of our products are carbon neutral and our programme is verified by an independent third party, Bureau Veritas.



All Interface manufacturing facilities in the Asia Pacific region maintain registration to ISO 9001 Quality Management Systems and ISO 14001 Environmental Management Systems.

Production specifications are subject to normal manufacturing tolerances and may be changed without notice. Slight variation in colour among different production lots are normal and should be considered in the overall installation plan. Products covered by manufacturer's written warranty only. All other warranties, including without limitation any implied warranties of merchantability or fitness for particular purpose, are hereby disclaimed. Contact your representative for written warranty information.



As part of Interface's Mission Zero promise to eliminate any negative impact on the environment by 2020, we always consider the environment impact of every creative, manufacturing and building decision. This sample book is printed on recycled paper and with soy based ink. Twenty four virgin trees were saved from our use of 1725kg of recycled paper in the production of 5000 sample books. Energy intensity also decreased and greenhouse gases were reduced. The other reductions came from waste water and solid waste. Through our sample reclamation program, we help keep sample materials out of landfill by re-using them until it is time to recycle these sample materials.

**[www.interface.com](http://www.interface.com)**

**South East Asia**

Interface Asia  
tel: 65-6478 1510  
[www.interface.com](http://www.interface.com)

**South Korea**

tel. 82-2-555 1734  
[www.interface.com](http://www.interface.com)

**Japan**

Interface Japan  
tel: 81-3-5733 5211  
[www.interface.com](http://www.interface.com)

**India**

Interface India  
tel: 91 80 46131313  
[www.interface.com](http://www.interface.com)

**Beijing Studio**

Interface China  
tel: 86-10-6590 7810  
[www.interface.com.cn](http://www.interface.com.cn)

**Hongkong Studio**

Interface China  
tel: 852-2802 0838  
[www.interface.com.cn](http://www.interface.com.cn)

**Shanghai Studio**

Interface China  
tel: 86-21-6340 3868  
[www.interface.com.cn](http://www.interface.com.cn)

**Australia**

Interface Australia  
local toll free: 1800 804 361  
[www.interface.com](http://www.interface.com)

02/2019  
SF0112T0



Climate change is undeniable. And reversible. Our mission is to prove it. **Join the #ClimateTakeBack and help create a climate fit for life.**