

Interface®



Interface, Inc.
1280 W Peachtree St. NW
Atlanta, GA 30309
United States

T +1 706.882.1891
www.interface.com

Product to be Optimized: Luxury Vinyl Tile (LVT) 3.0 mm

Impact information and Reduction Summary

| | |
|--|---|
| Manufacturer: | Interface |
| Manufacturer Contact Information: | Lisa Conway, VP, Sustainability, Interface Americas sustainability@interface.com |
| Product Name: | Luxury Vinyl Tile (LVT) 3.0 mm |
| Product Type: | Commercial Building Product |
| Product Description: | Commercial Modular Resilient Flooring |
| Manufacturing Location: | South Korea |
| Title of the Environmental Product Declaration that the Assessment is Based Upon: | Interface modular resilient flooring, 3 mm LVT EPD Declaration Number: 4787521006.133.1 |
| Life Cycle Assessment/ Environmental Product Declaration Type: | <ul style="list-style-type: none">▪ Publicly available, critically reviewed LCA (conforming to ISO 14044)▪ Internally verified LCA with a product specific EPD (conforming to ISO 4025, EN 15804, or ISO 21930)▪ Product specific Type III EPD (external verification of LCA and EPD) |
| Link to publicly available EPD | Retrieved from www.interface.com/epd Link to EPD for LVT (3.0 mm) |
| PCR | IBU and UL Environment. PCR for Building-Related Products and Services - Part A: Calculation rules for the LCA and Requirements Project Report, (IBU/ULE, Version 1.306.19.2014) IBU. Part B: Requirements on the EPD for Floor coverings (IBU, V1.6, 07.30.2014) |
| Date of EPD: | January 1, 2020 |



Interface®

Product to be Optimized: Luxury Vinyl Tile (LVT) 3.0 mm Impact information and Reduction Summary

Scope:

Description of the system boundary (X = included in LCA; MND = module not declared)

| PRODUCT STAGE | | CONSTRUCT/ON PROCESS STAGE | USE STAGE | | | | | | | END OF LIFE STAGE | | | | BENEFITS AND LOADS (BEYOND THE SYSTEM BOUNDARY) | | |
|---------------------|-----------|----------------------------|--------------------------------------|----------|-----|-------------|--------|---------------------------|-------------------------------|------------------------|-----------------------|---------------------------|-----------|---|----------|---------------------------|
| Raw material supply | Transport | Manufacturing | Transport from the plant to the site | Assembly | Use | Maintenance | Repair | Replacement ¹⁾ | Re/Replacements ¹⁾ | Operational energy use | Operational water use | Deconstruction/demolition | Transport | Waste processing | Disposal | Reuse/recycling/potential |
| A1 | A2 | A3 | A4 | A5 | B1 | B2 | B3 | B4 | B5 | B6 | B7 | C1 | C2 | C3 | C4 | D |
| X | X | X | X | X | MND | X | MND | MND | MND | MND | MND | MND | X | MND | X | MND |

Describe how the scope of the EPD aligns with actions identified in this Action Plan

LCA Software and Version:

LCA Dataset:

Action Plan Creation Date:

Action Plan Expiration Date:

Is this Action Plan applicable to all products listed in the corresponding EPD, or only a subset?

Summary of Largest Life Cycle Impacts identified in the Analysis

The specific actions identified in the Action Plan were identified through investigation of delivery module A1 (Raw Material Supply), which was required in the PCR, analyzed in the LCA and presented in the EPD.

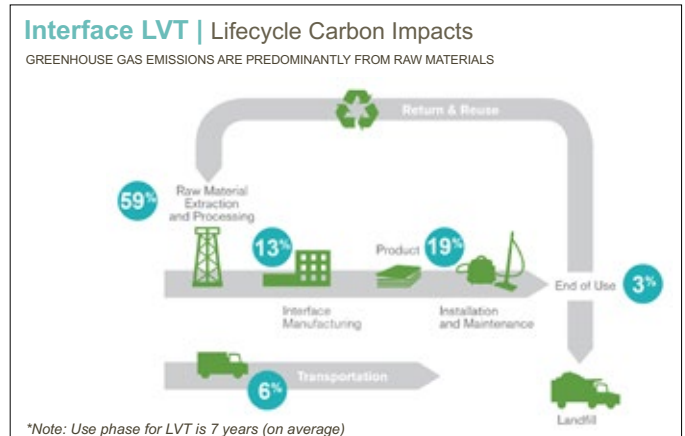
GaBi v6

GaBi Service Pack 34

January 4, 2021

January 31, 2023 or publication of revised product-specific EPD

Yes, all products



Analysis data taken from 2019 Global Carbon Neutral Floors LCA data.

Analysis of recent LCA data shows that over half of the GWP impact of making this product is in the Raw Material Extraction and Process stage (A1). Therefore, the greatest opportunity for substantial reduction of GWP is in changing the type of raw materials used in the formulation to lower GWP materials or working with suppliers to change the GHG intensity of the processes used to extract and process the raw materials used to make our LVT. We estimate that planned reformulation of our LVT to replace higher GWP raw materials with lower GWP materials will reduce product GWP by at least 10% by January 2023.

Narrative Description of the Impact Areas Targeted for Reduction



Interface®

Product to be Optimized: Luxury Vinyl Tile (LVT) 3.0 mm

Impact information and Reduction Summary

| Specific steps | Optimization Description | Responsible Team | Timeline |
|----------------|---|------------------------------|------------------|
| | Confirm performance and availability of alternative raw materials | Procurement/R&D | By December 2021 |
| | Reformulation of LVT to incorporate lower GWP raw materials | Procurement Manufacturing | By December 2021 |

This Action Plan was prepared by:



Aidan Ganzert,
Life Cycle Assessment Specialist,
Interface, Inc

This Action Plan was confirmed by:



Lisa Conway,
VP, Sustainability,
Interface Americas