

Interface Hospitality
MAINSTAY SUITES

*Approved Choice Hotels
Prototypes*

Cambria Hotel & Suites
Comfort Inn
Comfort Suites
Mainstay Suites
Sleep Inn

Why **Interface** Hospitality?

Interface Hospitality is a **Choice Hotels** approved supplier of carpet tile and LVT. We are currently approved on the following prototypes:

- Cambria Hotel & Suites
- Mainstay Suites
- Comfort Inn
- Sleep Inn
- Comfort Suites

1. **6-8 WEEK LEAD TIME** for anything not already in stock.
2. **NO ROLL SIZES OR WIDTHS** to deal with. We come in boxes!
3. What about **UNIT COST?** We can compare the real cost of tile vs. broadloom for each project and show you the true savings.
4. **15 YEAR WARRANTY.** Say no more.
5. **SELECTIVE REPLACEMENT** means little to no disruptions to hotel operations.
6. **INTERSEPT®** antimicrobial protection. Keepin' it clean.
7. **PROTEKT²** stain resistant technology. Keepin' it real clean!
8. Greater **EASE OF HANDLING**, less liability related to mis-cutting of broadloom.
9. Order and installation is a breeze with our **ESTIMATES, SEAMING DIAGRAMS, AND RENDERINGS.**
10. All of our yarns are **100% SOLUTION-DYED NYLON.**
11. **VARIOUS TILE SIZES** make it easier to design/define spaces and sub-spaces.
12. Our **CARPET** and **LVT** work together in seamless integration, with no transition strips.
13. **TACTILES®** mean an easy, no glue installation!
14. We are **MORE SUSTAINABLE:** All of our products are **EPD** verified.
15. Interface Hospitality's **REENTRY® RECLAMATION & RECYCLING** program results in our products having up to 80% recycled content, from returned/used carpet.
16. All Interface Hospitality carpet is climate neutral **COOL CARPET**, meaning no greenhouse gases!

Why **Interface** Hospitality?

1. Lead Time

If not in stock, our lead times are 6-8 weeks and all products are manufactured in the USA. FOB Union City, Georgia.

2. No Roll Sizes or Widths

There are no widths and roll sizes to deal with, which can often lead to hidden costs and unused material.

3. Unit Cost

The unit cost is only part of the evaluation when comparing carpet tile to broadloom for your hotel. Waste is a big consideration with total project cost. We can develop project specific ROI's to compare total project cost for your individual property.

4. 15 Year Warranty

All Interface Hospitality products are hard wearing, provide lasting protection against excessive surface wear, edge ravel, backing separation, shrinking, stretching, permanent soiling and staining.

5. Selective Replacement

Whether you're replacing a single guest room, a corridor, or an entire hotel, you can do so without disruption. Interface Hospitality's selective replacement enables old flooring to be replaced quickly and efficiently any day of the week, your carpet replacement costs can be cut by up to 50%.

6. Intersept®

Mold Protection no matter what's spilled on the floor, our proprietary antimicrobial preservative, Intersept®, protects our modular carpet against the growth of odor-causing bacteria guaranteed. With proper maintenance, Intersept treated carpet safely and effectively inhibits the growth of mold and other bacteria so your floors are always fresh. All Interface carpet is standard with Intersept.

7. Protekt²

Because stain resist technology - Protekt² - is built into Interface carpet tiles, a topical stain resist treatment is not necessary. The additional polymer is included when nylon is manufactured so it permanently increases stain resistance. We conducted stain tests on our products and compared them to products with a topical treatment. The results? Our uncoated fibers performed just as well as the treated ones. Additionally, the fluorinated chemicals traditionally used in stain resist treatments, when they do wash off, persist in the environment for thousands of years. With Protekt², you get permanent stain resistance, not permanent pollution.

8. Ease of Handling

Carpet tile offers greater ease of handling, and installers have less liability related to possible mis-cutting of broadloom.

9. Installation

Order and installation is a breeze with our estimates, seaming diagrams and renderings.

10. 100% Solution-dyed Nylon

Vibrant color that does not fade. All Interface Hospitality carpet tiles are made from durable, stain resistant, 100% solution dyed nylon. Offering superior color fastness and a wide array of colors and textures, solution dyed nylon is less harmful to the environment, using no water or toxic chemicals in the manufacturing process.

11. Various Sizes

Using 50cm, 1m, 25cm x 1m and 50cm x 1m tiles allows for optimal pattern repeats, asymmetrical or symmetrical designs and color use. It also allows design to define spaces / nesting within larger areas.

12. Integrated System

Interface modular tiles span a wide selection of designs that offer pattern, color and texture options for a myriad of flooring needs. Tiles come in a variety of shape and size modules that work seamlessly and interchangeably with each other. This compatibility allows for holistic flooring solutions with expansive design flexibility.

13. TacTiles®

No Glue Installation. Installation or reconfiguration with our glue-free TacTiles installation system means there's no glue smell and no drying time. Guests can use the room as soon as the last piece is laid and all they'll notice is a beautiful floor. <https://goo.gl/syJN1B>

14. Sustainable Choice

Environmental Responsibility. Interface Hospitality was the industry's first to earn an EPD (Environmental Product Declaration), which evaluates consistent factors based on full lifecycle assessment (LCA). We now have published EPDs for 99% of our products globally. In addition, all of our products with GlasBac® and GlasBacRE backings meet NSF/ANSI 140 Sustainable Carpet Assessment Standard (SCAS) for carpet.

15. Carpet Recycling Program: ReEntry®

Recyclable is Now a Reality. Through our ReEntry program and partnerships with our fiber suppliers and recycling centers throughout North America, separated Type 6 and 6,6 nylon are recycled into new 6 and 6,6 nylon, while separated GlasBac® and similar competitor backings are recycled into GlasBac®RE non-virgin PVC backing using our Cool Blue™ technology. The result? Products with up to 80% total recycled content, including as much as 35% post-consumer content.

16. Cool Carpet™

Our third party verified carbon offset program zeroes out all greenhouse gas (GHG) emissions associated with the entire lifecycle of your carpet. An independent testing program that identifies carpet and adhesives with very low emissions of VOCs to help improve indoor air quality.

17. Dimensional Stability

Interface GlasBac® backing has been tested and proven in the marketplace for over 30 years. Engineered to provide superior dimensional stability, GlasBac® modular carpet tiles will not stretch or shrink when exposed to heat or cold, heavy foot or rolling traffic.

18. Sound Absorption

Quite space is essential when people need to focus and concentrate. Sound absorption is therefore critical when colleagues need to collaborate without becoming a distraction to their neighbors. Interface Hospitality carpets provide high sound absorption and insulation.

Guest Room Prototype Order Information

FOR PRICING CONTACT: Mike Webb mike.webb@interface.com or your local Account Executive

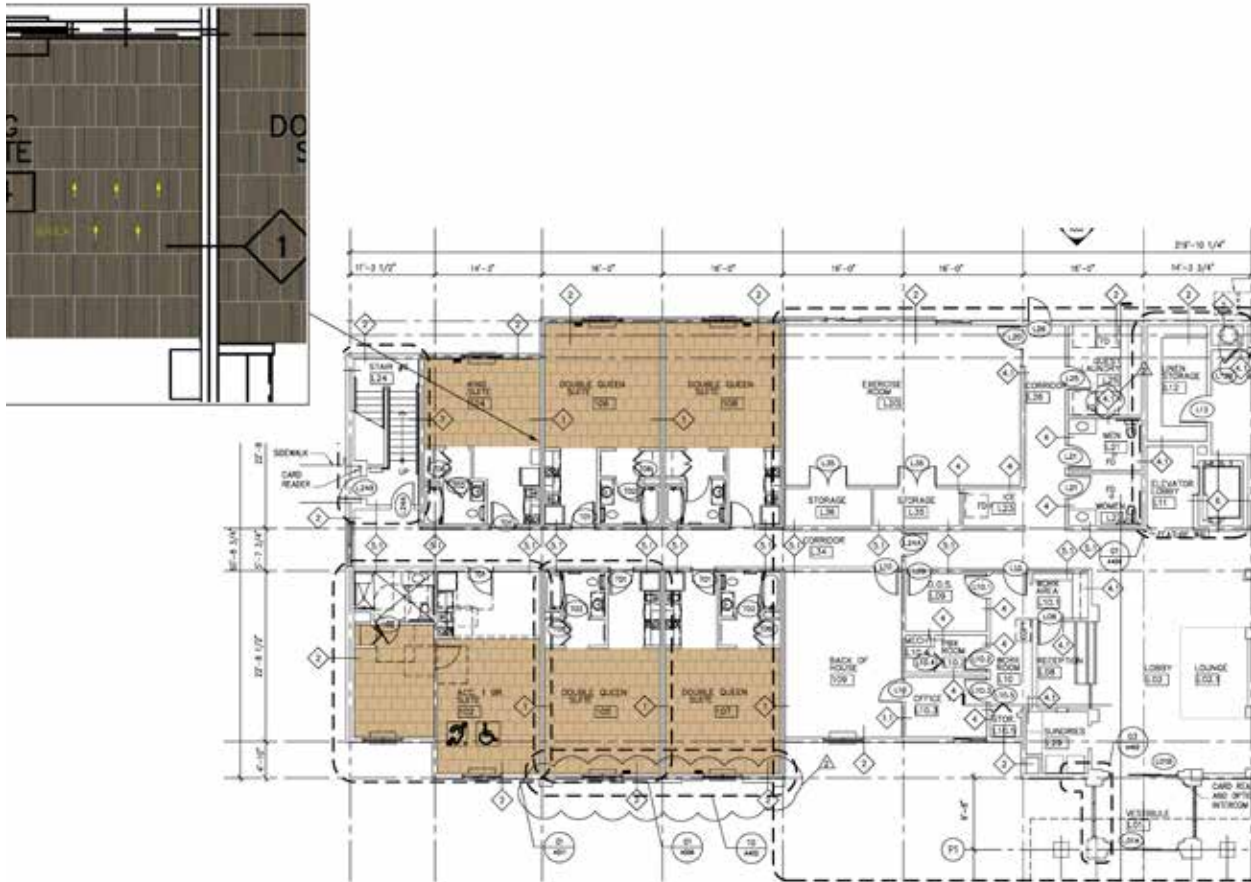
FOR ORDER ENTRY / SHIPPING CONTACT: Customer Service 1.888.228.6301 CustomerSuccess-Hospitality@interface.com



| Guest Room Product | Spec # | Sample # | Color # | Size | Installation |
|---|------------------------------|------------|---------|-------------|--------------|
| Custom A | CPT-001 | 265709-042 | 187107 | 50cm x 50cm | Brick |
| Installation Specifications | Description | | | | |
| Tac Tiles for Installation (500 TacTiles/Roll) | 60sq yds/Roll Adhesive | | | | |
| Pad / Underlayment (Optional-Not Required) | CushionBac Renew | | | | |
| 2000 Plus | Adhesive to be used with pad | | | | |

GUEST ROOM INSTALLATION PLAN

All quantities are estimates only and are based on plans provided. Site measurements and field verifications are recommended to ensure accuracy. These quantities are not intended to be used for material ordering purposes. Since waste factors may vary by installer, actual ordering quantities are the responsibility of your flooring contractor.



LEGEND

A

PRODUCT: CUSTOM
COLOR: 187107
SIZE: 50cm
INSTALLED: BRICK

Corridor Prototype Order Information

FOR PRICING CONTACT: Mike Webb mike.webb@interface.com or your local Account Executive

FOR ORDER ENTRY / SHIPPING CONTACT: Customer Service 1.888.228.6301 CustomerSuccess-Hospitality@interface.com



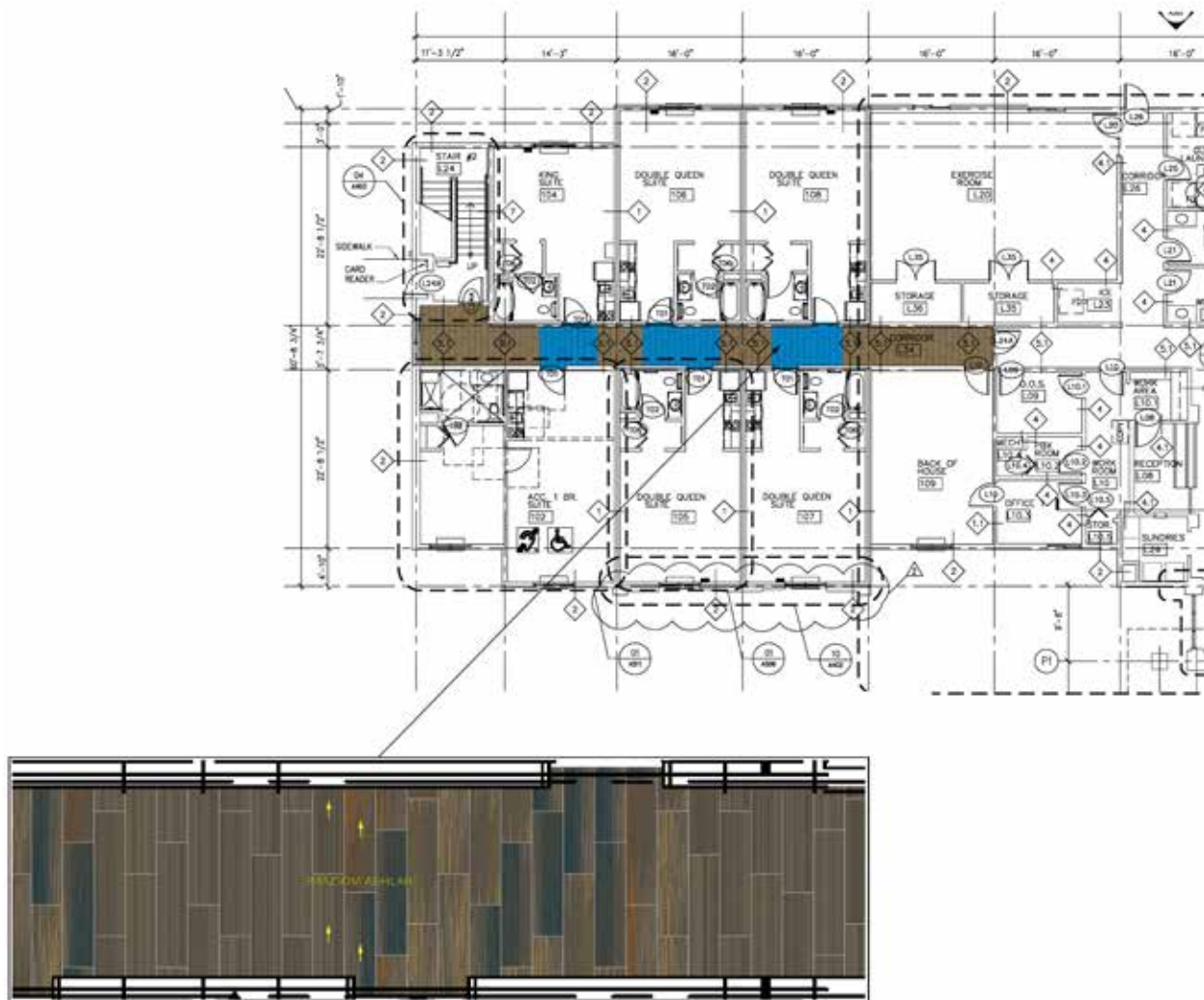
| Corridor Product | Spec # | Sample # | Color # | Size | Installation |
|------------------|-------------------|------------|---------|-----------|--------------|
| SL910 A | CPT-001 (Tile)-MS | 265709-052 | * | 25cm x 1m | Ashlar |
| SL930 B | CPT-001 (Tile)-MS | 265709-047 | * | 25cm x 1m | Ashlar |

| Installation Specifications | Description |
|---|------------------------------|
| Tac Tiles for Installation (500 TacTiles/Roll) | 60sq yds/Roll Adhesive |
| Pad / Underlayment (Optional-Not Required) | CushionBac Renew |
| 2000 Plus | Adhesive to be used with pad |



*Account Executives: order samples through Custom Development using sample #. Not available through the sample center.

CORRIDOR INSTALLATION PLAN

All quantities are estimates only and are based on plans provided. Site measurements and field verifications are recommended to ensure accuracy. These quantities are not intended to be used for material ordering purposes. Since waste factors may vary by installer, actual ordering quantities are the responsibility of your flooring contractor.



LEGEND

| | |
|--|--|
| A | B |
|  |  |
| <p>PRODUCT: SL910 COLOR: 265709-052 SIZE: 25cm x 1m INSTALLED: RANDOM ASHLAR</p> | <p>PRODUCT: SL930 COLOR: 265709-047 SIZE: 25cm x 1m INSTALLED: RANDOM ASHLAR</p> |

Lobby Prototype Order Information

FOR PRICING CONTACT: Mike Webb mike.webb@interface.com or your local Account Executive

FOR ORDER ENTRY / SHIPPING CONTACT: Customer Service 1.888.228.6301 CustomerSuccess-Hospitality@interface.com



| Lobby Product | Spec # | Sample # | Color # | Size | Installation |
|---|--------------------|------------------------------|---------|-----------|---------------|
| SL930 B | CPT-001 (Tile)-MS) | 265709-047 | * | 25cm x 1m | Random Ashlar |
| Installation Specifications | | Description | | | |
| Tac Tiles for Installation (500 TacTiles/Roll) | | 60sq yds/Roll Adhesive | | | |
| Pad / Underlayment (Optional-Not Required) | | CushionBac Renew | | | |
| 2000 Plus | | Adhesive to be used with pad | | | |

*Account Executives: order samples through Custom Development using sample #. Not available through the sample center.

LOBBY INSTALLATION PLAN

All quantities are estimates only and are based on plans provided. Site measurements and field verifications are recommended to ensure accuracy. These quantities are not intended to be used for material ordering purposes. Since waste factors may vary by installer, actual ordering quantities are the responsibility of your flooring contractor.

