

A modern lounge area with blue modular sofas, a patterned carpet, and large windows. A woman is sitting on one of the sofas. The room has a brick wall and large windows with a grid pattern. The carpet has a grey and green pattern.

Human Connections Collection

Interface®

Human Connections™ Collection

Today, we are both more connected as a society and, ironically, increasingly less connected, shielded from each other and the natural world by our screens, our cars, our homes and the buildings in which we work. But when we walk outside, our pathways reveal the importance of reconnection: the choices we make in our destinations, how we get there and the unexpected gathering places that we happen upon. Invariably we are also drawn to areas of respite where nature is present, nurtured to grow in the environment or simply there by its own persistence.

Human Connections is literally the intersection of the sensory cues that we seek to include in our fast paced lives, supporting the idea that the most positive spaces offer variability and choice. Eight different styles fit together in unique ways to create paths, intersections, collision zones and destinations. Sett in Stone™, Kerbstone™, Paver™ and Flagstone™ are four textures that recall the well-worn streets of the city, while Moss™ and Moss in Stone™ attach seamlessly to Sett in Stone to introduce the greenery we crave in a very organic way.

To complete the collection we have included two styles from FLOR® by Interface, Rue™ and Stone Course™. These highly patterned and colorful styles add a lively graffiti-like impact.

Create your path to +Positive spaces with Human Connections.



CARPET PRODUCT FLAGSTONE **COLOR** 105577 SLATE **FLOOR PRODUCT** STONE COURSE
COLORS 105581 TEAL/STONE, 105584 ORANGE/STONE, 105587 PURPLE/STONE
LVT PRODUCT LEVEL SET™ | **TEXTURED STONES** **COLOR** A00302 COOL POLISHED CEMENT **INSTALLED** NON DIRECTIONAL



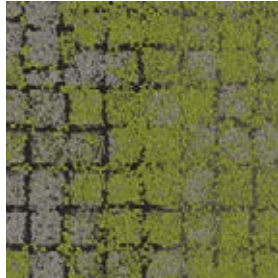


PRODUCT PAVER **COLOR** 105559 ONYX **PRODUCT** SETT IN STONE **COLOR** 105568 GRANITE
PRODUCT URBAN RETREAT™ | UR501 **COLOR** 103611 GRASS **INSTALLED** PATTERN BY TILE

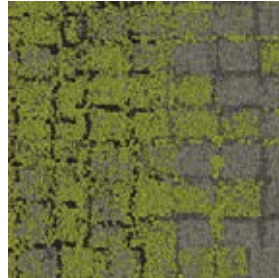
Moss Colorline



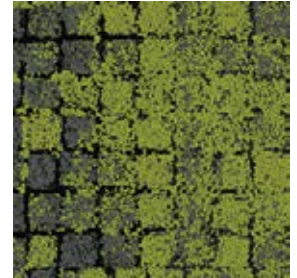
105560 GRANITE/MOSS



105561 SLATE/MOSS



105562 FLINT/MOSS



105563 ONYX/MOSS

Specifications **i2**

Modular, 50cm x 50cm	1286102500
Backing System	GlasBac® Tile
Yarn Manufacturer	Aquafil
Yarn System	100% Recycled Content Type 6 Nylon
Color System	100% Solution Dyed
Construction	Tufted Pattern Loop
Lifetime Antimicrobial	Intersept®
Soil/Stain Protection	Protekt2®
Pile Thickness	0.117 in, 3.0 mm
Pile Density	8,308
Total Recycled Content	73%
Indoor Air Quality	CRI Green Label Plus #GLP0820



NON-DIRECTIONAL



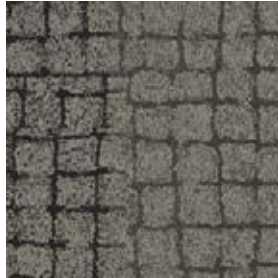
PRODUCT MOSS COLOR 105562 FLINT/MOSS INSTALLED NON DIRECTIONAL



Sett in Stone Colorline



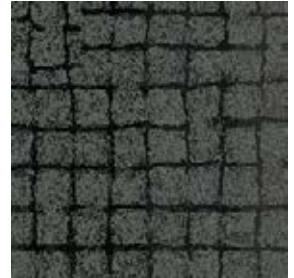
105568 GRANITE



105569 SLATE



105570 FLINT

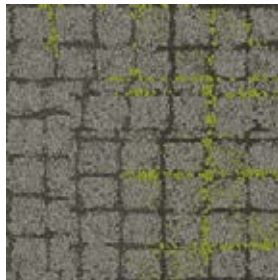


105571 ONYX

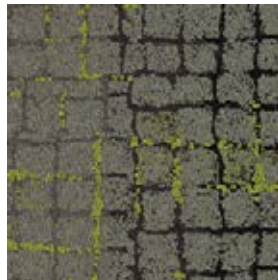
Moss in Stone Colorline



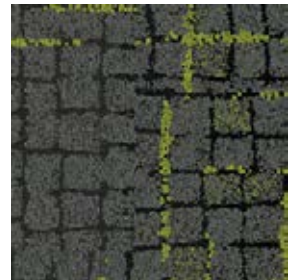
105564 GRANITE EDGE



105565 SLATE EDGE



105566 FLINT EDGE



105567 ONYX EDGE

Sett in Stone Specifications

Modular, 50cm x 50cm	1286302500
Backing System	GlasBac® Tile
Yarn Manufacturer	Aquafil
Yarn System	100% Recycled Content Type 6 Nylon
Color System	100% Solution Dyed
Construction	Tufted Pattern Loop
Lifetime Antimicrobial	Intersept®
Soil/Stain Protection	Protekt2®
Pile Thickness	0.078 in, 2.0 mm
Pile Density	10,154
Total Recycled Content	72%
Indoor Air Quality	CRI Green Label Plus #GLP0820



NON-DIRECTIONAL

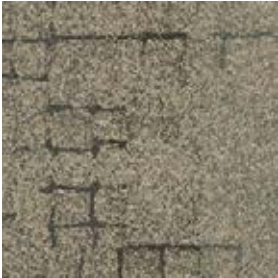
Moss in Stone Specifications

Modular, 50cm x 50cm	1286202500
Backing System	GlasBac® Tile
Yarn Manufacturer	Aquafil
Yarn System	100% Recycled Content Type 6 Nylon
Color System	100% Solution Dyed
Construction	Tufted Pattern Loop
Lifetime Antimicrobial	Intersept®
Soil/Stain Protection	Protekt2®
Pile Thickness	0.094 in, 2.4 mm
Pile Density	9,574
Total Recycled Content	73%
Indoor Air Quality	CRI Green Label Plus #GLP0820

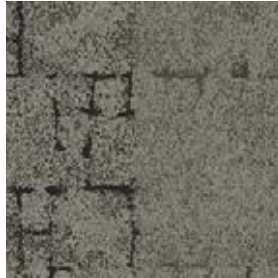


NON-DIRECTIONAL

Kerbstone Colorline



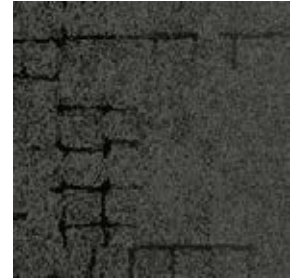
105572 GRANITE



105573 SLATE



105574 FLINT



105575 ONYX

Specifications **i2**

Modular, 50cm x 50cm	1286402500
Backing System	GlasBac® Tile
Yarn Manufacturer	Aquafil
Yarn System	100% Recycled Content Type 6 Nylon
Color System	100% Solution Dyed
Construction	Tufted Pattern Loop
Lifetime Antimicrobial	Intersept®
Soil/Stain Protection	Protekt2®
Pile Thickness	0.080 in, 2.0 mm
Pile Density	9,900
Total Recycled Content	72%
Indoor Air Quality	CRI Green Label Plus #GLP0820



NON-DIRECTIONAL



CARPET PRODUCT KERBSTONE **COLOR** 105574 FLINT
LVT PRODUCT LEVEL SET | TEXTURED STONES **COLOR** A00302 COOL POLISHED CEMENT **INSTALLED** NON DIRECTIONAL



Paver Colorline



105556 GRANITE



105557 SLATE



105558 FLINT



105559 ONYX

Specifications **i2**

Modular, 50cm x 50cm	1632402500
Backing System	GlasBac® Tile
Yarn Manufacturer	Aquafil
Yarn System	100% Recycled Content Type 6 Nylon
Color System	100% Solution Dyed
Construction	Tufted Textured Loop
Lifetime Antimicrobial	Intersept®
Soil/Stain Protection	Protekt2®
Pile Thickness	0.075 in, 1.9 mm
Pile Density	9,120
Total Recycled Content	72%
Indoor Air Quality	CRI Green Label Plus #GLP0820



NON-DIRECTIONAL

Flagstone Colorline



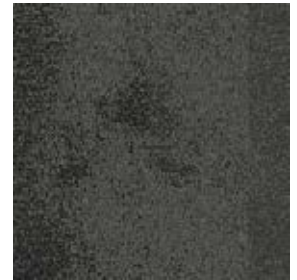
105576 GRANITE



105577 SLATE



105578 FLINT



105579 ONYX

Specifications **i2**

Modular, 50cm x 50cm	1286502500
Backing System	GlasBac® Tile
Yarn Manufacturer	Aquafil
Yarn System	100% Recycled Content Type 6 Nylon
Color System	100% Solution Dyed
Construction	Tufted Pattern Loop
Lifetime Antimicrobial	Intersept®
Soil/Stain Protection	Protekt2®
Pile Thickness	0.085 in, 2.2 mm
Pile Density	9,741
Total Recycled Content	72%
Indoor Air Quality	CRI Green Label Plus #GLP0820



NON-DIRECTIONAL



PRODUCT FLAGSTONE **COLORS** 105578 FLINT, 105579 ONYX
PRODUCT SETT IN STONE **COLOR** 105571 ONYX **INSTALLED** NON DIRECTIONAL



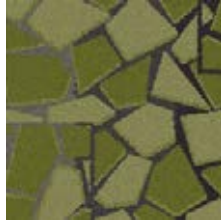
Rue Colorline | FLOR® by Interface



105588 GREY



105589 TEAL



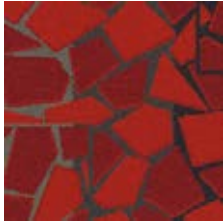
105590 GREEN



105591 YELLOW



105592 ORANGE



105593 RED



105594 PINK



105595 PURPLE

Stone Course Colorline | FLOR® by Interface



105580 GREY/STONE



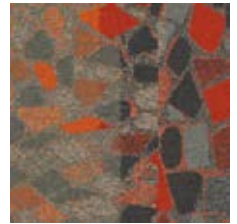
105581 TEAL/STONE



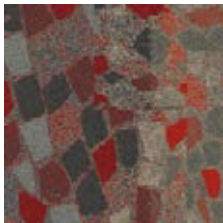
105582 GREEN/STONE



105583 YELLOW/STONE



105584 ORANGE/STONE



105585 RED/STONE



105586 PINK/STONE



105587 PURPLE/STONE

Rue Specifications

Modular, 50cm x 50cm	1286702500
Backing System	GlasBac® Tile
Yarn Manufacturer	Aquafil
Yarn System	100% Recycled Content Type 6 Nylon
Color System	100% Solution Dyed
Construction	Tufted Pattern Loop
Lifetime Antimicrobial	Intersept®
Soil/Stain Protection	Protekt2®
Pile Thickness	0.132 in, 3.4 mm
Pile Density	7,364
Total Recycled Content	73%
Indoor Air Quality	CRI Green Label Plus #GLP0820



NON-DIRECTIONAL

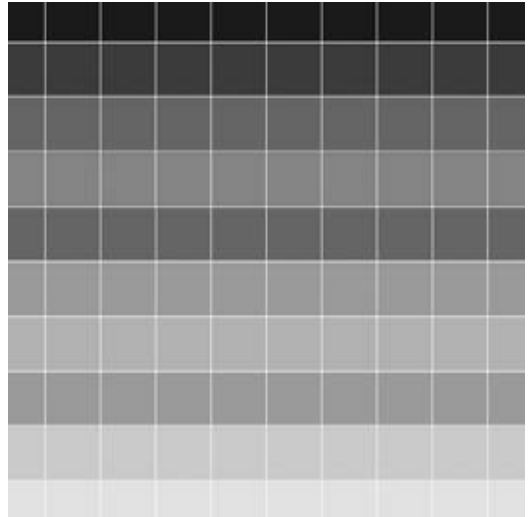
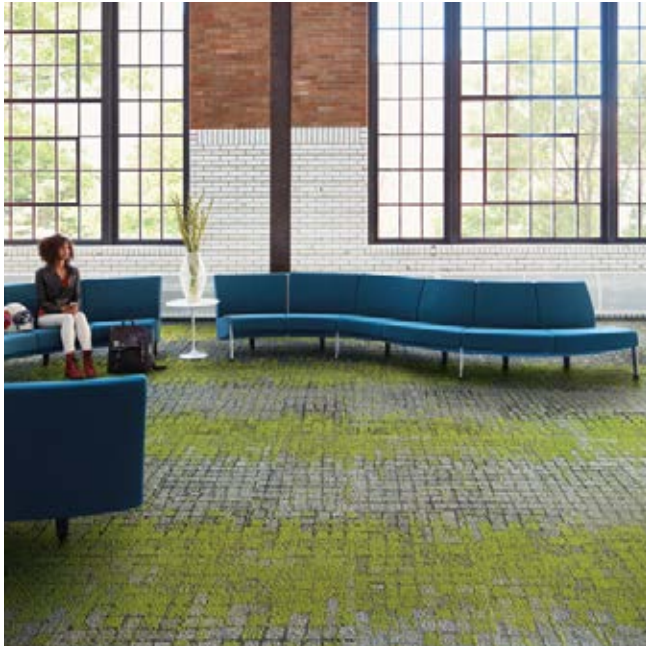
Stone Course Specifications

Modular, 50cm x 50cm	1286602500
Backing System	GlasBac® Tile
Yarn Manufacturer	Aquafil
Yarn System	100% Recycled Content Type 6 Nylon
Color System	100% Solution Dyed
Construction	Tufted Pattern Loop
Lifetime Antimicrobial	Intersept®
Soil/Stain Protection	Protekt2®
Pile Thickness	0.094 in, 2.4 mm
Pile Density	10,340
Total Recycled Content	73%
Indoor Air Quality	CRI Green Label Plus #GLP0820

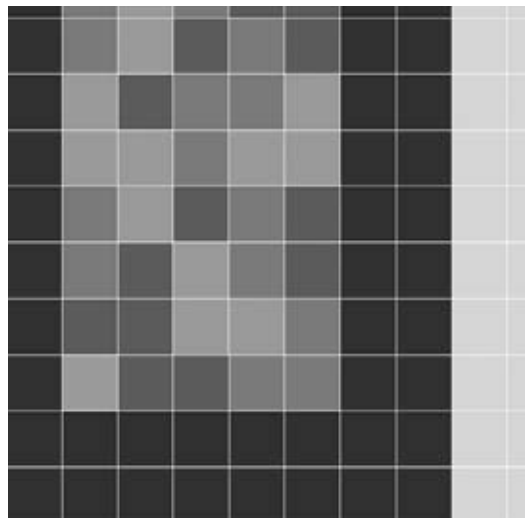
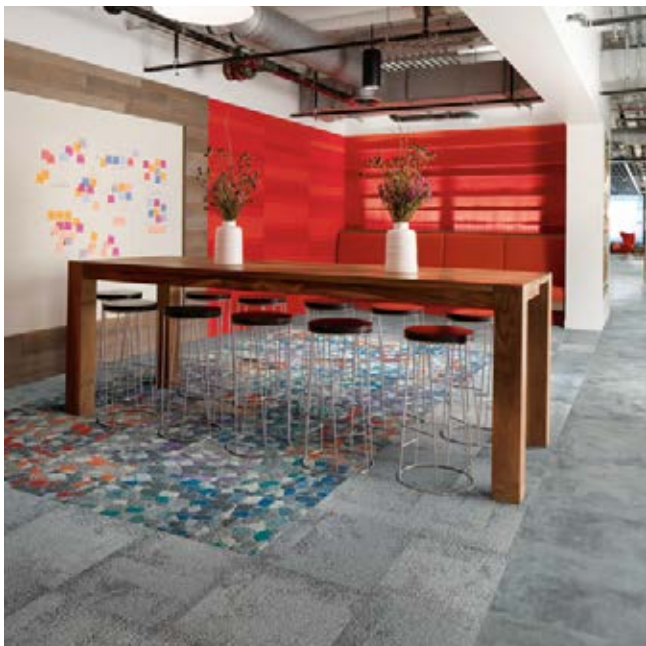


NON-DIRECTIONAL

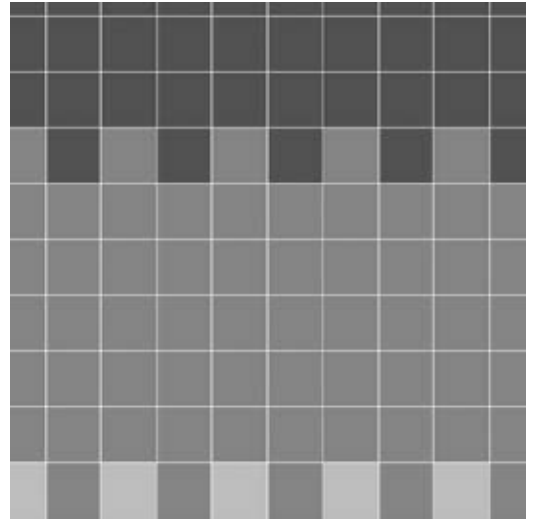
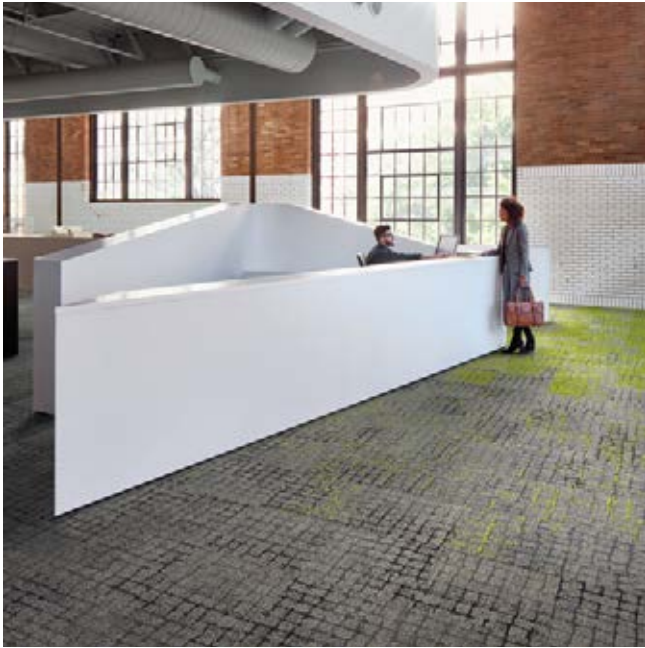
Design Ideas Below are floor layouts showing how to create the design ideas shared in several of the images featured in this brochure.



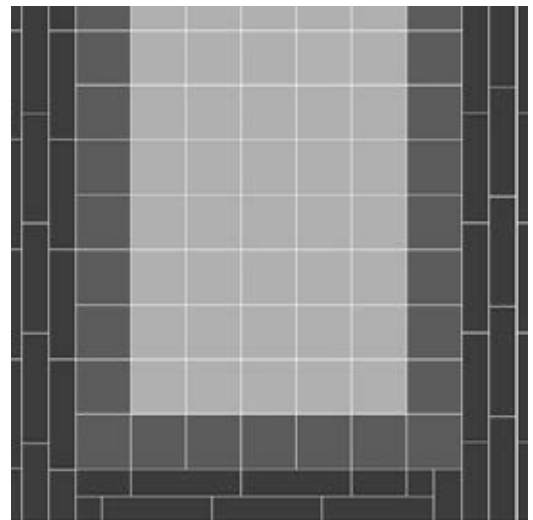
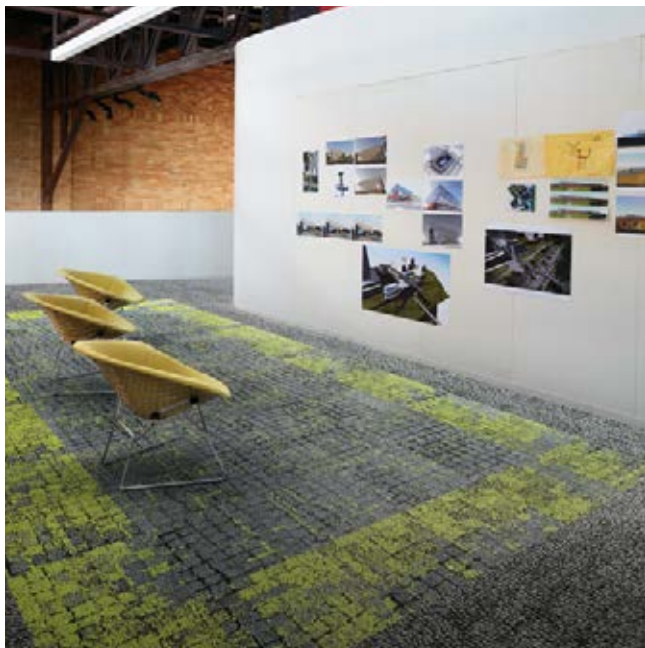
PRODUCT MOSS IN STONE **COLORS** 105564 GRANITE EDGE, 105565 SLATE EDGE, 105566 FLINT EDGE, 105567 ONYX EDGE **PRODUCT** MOSS **COLORS** 105560 GRANITE/MOSS, 105561 SLATE/MOSS, 105562 FLINT/MOSS, 105563 ONYX/MOSS **INSTALLED** PATTERN BY TILE



CARPET PRODUCT FLAGSTONE **COLOR** 105577 SLATE **FLOOR PRODUCT** STONE COURSE **COLORS** 105581 TEAL/STONE, 105584 ORANGE/STONE, 105587 PURPLE/STONE **LVT PRODUCT** LEVEL SET | TEXTURED STONES **COLOR** A00302 COOL POLISHED CEMENT **INSTALLED** NON DIRECTIONAL

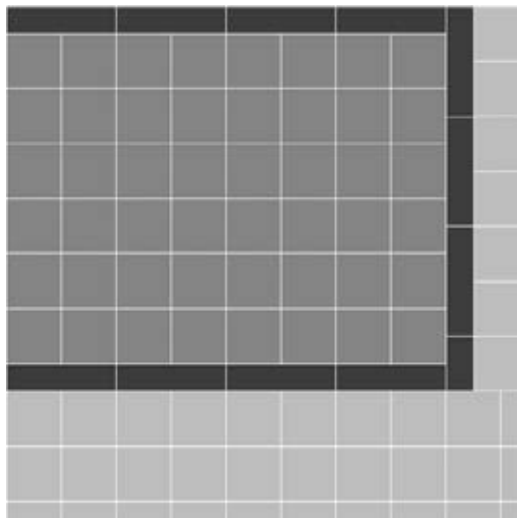
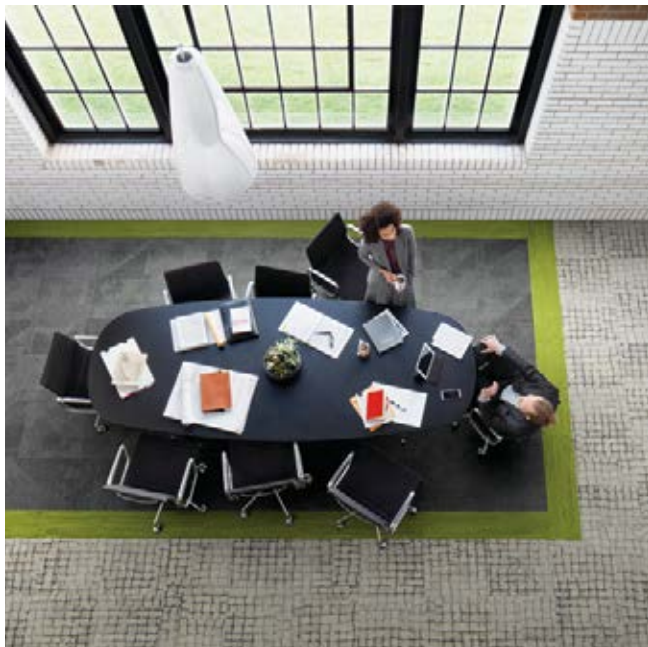


PRODUCT SETT IN STONE **COLOR** 105570 FLINT **PRODUCT** MOSS IN STONE **COLOR** 105566 FLINT EDGE **PRODUCT** MOSS
COLOR 105562 FLINT/MOSS **INSTALLED** PATTERN BY TILE

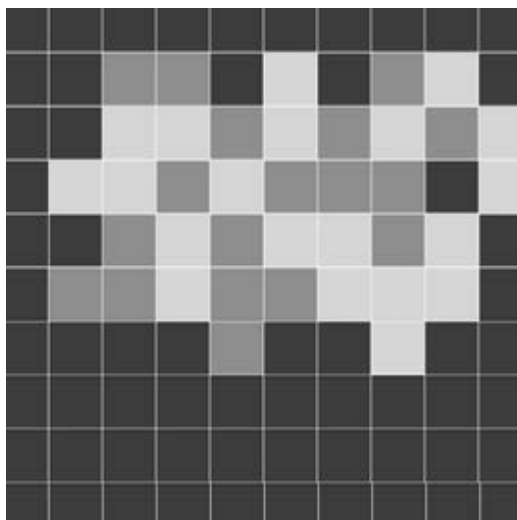


PRODUCT HUMAN NATURE | HN840 **COLOR** 104223 SLATE **PRODUCT** MOSS **COLORS** 105561 SLATE/MOSS, 105563 ONYX/MOSS **PRODUCT** MOSS
IN STONE **COLOR** 105567 ONYX EDGE **INSTALLED** PATTERN BY TILE

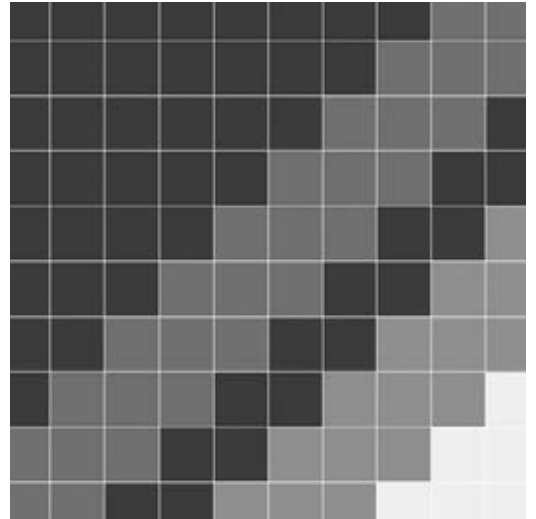
Design Ideas Below are floor layouts showing how to create the design ideas shared in several of the images featured in this brochure.



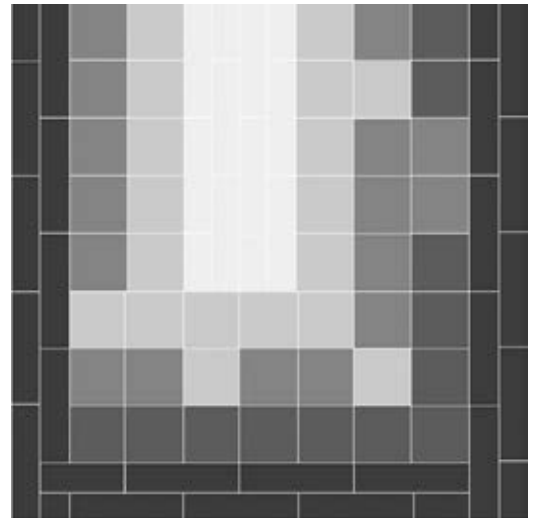
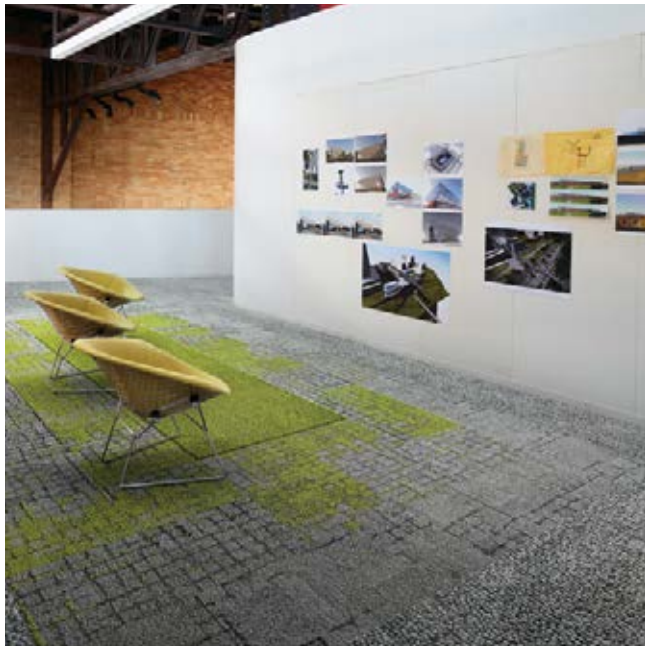
**PRODUCT PAVER COLOR 105559 ONYX PRODUCT SETT IN STONE COLOR 105568 GRANITE
PRODUCT URBAN RETREAT | UR501 COLOR 103611 GRASS INSTALLED PATTERN BY TILE**



**PRODUCT SETT IN STONE COLOR 105571 ONYX FLOR PRODUCT STONE COURSE COLOR 105581 TEAL/STONE FLOR PRODUCT RUE COLOR
105589 TEAL INSTALLED PATTERN BY TILE**



PRODUCT MOSS **COLOR** 105561 SLATE/MOSS **PRODUCT** PAVER **COLOR** 105557 SLATE **PRODUCT** SETT IN STONE **COLOR** 105569 SLATE
PRODUCT KERBSTONE **COLOR** 105573 SLATE **INSTALLATION** PATTERN BY TILE



PRODUCT KERBSTONE **COLOR** 105573 SLATE **PRODUCT** MOSS IN STONE **COLOR** 105565 SLATE EDGE **PRODUCT** MOSS **COLOR** 105561 SLATE/
 MOSS **PRODUCT** HUMAN NATURE | HN830 **COLOR** 104242 KIWI **PRODUCT** HUMAN NATURE | HN840 **COLOR** 104224 LIMESTONE
INSTALLATION PATTERN BY TILE

Why Our Modular Carpet?



i2® Modular Carpet

Minimize Waste & Save Money.

Interface's i2 styles have mergeable dye lots. That means i2 tiles from different dye lots always blend with tiles of the same color, even when individual tiles are selectively replaced years later. This minimizes the need for attic stock and saves money. And i2 styles that install non directionally generate an average of only 1.5% installation waste as compared to 3-4% for typical modular carpet and an average of 14% for traditional roll carpet.



Cool Carpet™

The Low Carbon Option. Help stop climate change. ALL Interface modular carpet sold in North America is third party verified climate neutral Cool Carpet. We start by using low-carbon materials and manufacturing processes, then Cool Carpet zeros out all remaining greenhouse gas (GHG) emissions associated with the entire lifecycle of your carpet, from raw material extraction through use and recycling.



TacTiles®

No Glue Installation. Our revolutionary TacTiles installation system eliminates the need for glue, adhering tiles securely together to form a floor that "floats" for greater flexibility, easier replacement and long-term performance. The result? Less mess, less waste and virtually no VOCs, not to mention an environmental footprint that is over 90% lower than that of traditional glue adhesives.

Samples

Order samples at www.interface.com. You'll receive email order confirmations, 24/7 access to order status and more. Not near a computer? You can also request samples by calling one of the numbers below.

United States Canada
1.877.605.1500 1.866.398.3192

Brazil Latin America
+ 55 11 2196 0900 + 52 55 6395 5100

www.interface.com

Register at www.interface.com to:

- Browse products and order samples
- View carpet in a variety of room scenes
- Use the Floors design tool to create layouts you can save or share
- Use our LEED Calculator
- Check order status and inventory availability
- Sign up to get the latest information on Interface products and news

InterCircle™ Sample Return

Help us close the loop on the carpet sampling process. Through our InterCircle Sample Return program, sample materials stay out of the landfill and are re-used as samples until it is time to recycle them into new carpet. By reducing sample production material and diverting old materials from the landfill, we can reduce our overall environmental footprint.

Call 1.877.605.1500 (U.S.) or 1.866.398.3192 (Canada) to order a sample return bag with a prepaid return label.

Third Party Certification

cool carpet™

Cool Carpet – Our third party verified carbon offset program zeroes out all greenhouse gas (GHG) emissions associated with the entire lifecycle of your carpet.



Environmental Product Declaration (EPD) – A statement of product ingredients and environmental impacts over the entire life cycle of a product. A comprehensive life cycle assessment (LCA) is performed to ISO standards to develop an EPD, after which both the EPD and LCA must be third party verified.



Sustainable Assessment for Carpet – The only carpet sustainability standard in North America that evaluates the environmental impact of carpet for its entire lifecycle.



CRI Green Label Plus – An independent testing program that identifies carpet and adhesives with very low emissions of VOCs to help improve indoor air quality.



Intersept®

Mold Protection. Our proprietary preservative, Intersept, protects our modular carpet against mold growth and odor-causing bacteria—guaranteed. Intersept treated carpet, with proper maintenance, shows no mold or bacterial growth when tested per the ASTM E2471 Standard Test Method. Intersept is EPA approved for safe use in carpet, water insoluble and contains no halogens, heavy metals, phenols or formaldehyde.



ReEntry®

Recyclable is Now a Reality. Through our ReEntry program and partnerships with our fiber suppliers and recycling centers throughout North America, separated Type 6 and 6,6 nylon are recycled into new 6 and 6,6 nylon, while separated GlasBac® and similar competitor backings are recycled into GlasBac®RE non-virgin PVC backing using our Cool Blue™ technology. The result? Products with up to 89% total recycled content, including as much as 27% post-consumer content.



Sustainable Choice

Environmental Responsibility. Many Interface products carry the GreenCircle Certified Environmental Facts label, which has verified that standard Interface products offer a minimum of 66% and 80% total recycled content when backed with GlasBac® and GlasBacRE backing respectively, using 99% renewable energy.

Transparency and certified sustainability leadership come standard on all Interface products, including published ingredients in HPDs (Health Product Declarations) or Declare Labels. In addition, more than 99% of our products globally have a published EPD (Environmental Product Declaration), which evaluates consistent factors based on full life cycle assessment (LCA). And, all Interface products with GlasBacRE backing are certified to the Platinum level of the NSF/ANSI 140 Sustainable Assessment for Carpet. GlasBac backed products meet the Gold level. NSF/ANSI 140 certified products contribute toward a USGBC or CaGBC LEED Credit.



All product specifications reflect averages derived from product sample testing, are subject to normal manufacturing and testing tolerances and inherent pattern variances, and may be changed without notice. For more information about these and other important attributes of the product(s) described herein, including recycled content and product warranty information, please see www.interface.com/disclaimer.

Printed on 50% post consumer waste (PCW) fiber manufactured using wind power.

We have tried our very best to accurately represent product colors. However, due to the nature of printed materials, color of actual products may vary slightly. Please request a sample to see actual product color.

www.interface.com

United States Headquarters

1503 Orchard Hill Road
LaGrange, GA 30240
1.800.336.0225 ext.56511

Canadian Headquarters

233 Lahr Drive
Belleville, ON K8N 5S2
1.800.267.2149 ext.52128

Brazilian Headquarters

Rua Surubim, 577 - Conjuntos
73/74 7º Andar
04571-050 - São Paulo - SP
+ 55 11 2196 0900

Latin American Headquarters

Montes Urales # 415 Piso 6
Col. Lomas de Chapultepec
México City, D.F. 11000
Mexico
+ 52 55 6395 5100

CIM # IFS00778 06/2017



Mission Zero[®]

our promise to eliminate any
negative impact our company
may have on the environment
by the year 2020.