

Interface Hospitality
MARRIOTT
INTERNATIONAL

Approved Prototypes

Aloft Hotels
Courtyard
Delta Hotels
Element
Fairfield Inn & Suites
Four Points
Marriott Hotels
Residence Inn
Sheraton
Towneplace Suites

Why **Interface** Hospitality?

Interface Hospitality is a **Marriott International** approved supplier of carpet and LVT. We are currently approved on the following prototypes:

- Aloft Hotels
- Courtyard
- Delta Hotels
- Element
- Fairfield Inn & Suites
- Four Points
- Marriott Hotels
- Residence Inn
- Sheraton
- Towneplace Suites



1. **6-8 WEEK LEAD TIME** for anything not already in stock.
2. **NO ROLL SIZES OR WIDTHS** to deal with. We come in boxes!
3. What about **UNIT COST?** We can compare the real cost of tile vs. broadloom for each project and show you the true savings.
4. **15 YEAR WARRANTY.** Say no more.
5. **SELECTIVE REPLACEMENT** means little to no disruptions to hotel operations.
6. **INTERSEPT®** antimicrobial protection. Keepin' it clean.
7. **PROTEKT²** stain resistant technology. Keepin' it real clean!
8. Greater **EASE OF HANDLING**, less liability related to mis-cutting of broadloom.
9. Order and installation is a breeze with our **ESTIMATES, SEAMING DIAGRAMS, AND RENDERINGS.**
10. All of our yarns are **100% SOLUTION-DYED NYLON.**
11. **VARIOUS TILE SIZES** make it easier to design/define spaces and sub-spaces.
12. Our **CARPET** and **LVT** work together in seamless integration, with no transition strips.
13. **TACTILES** mean an easy, no glue installation!
14. We are **SUSTAINABLE:** All of our products are **EPD** verified.
15. Interface Hospitality's **RE-ENTRY RECYCLING** program results in our products having up to 80% recycled content, from returned/used carpet.
16. All Interface Hospitality carpet is climate neutral **COOL CARPET**, meaning no greenhouse gases!

Why **Interface** Hospitality?

1. Lead Time

If not in stock, our lead times are 6-8 weeks and all products are manufactured in the USA. FOB Union City, Georgia.

2. No Roll Sizes or Widths

There are no widths and roll sizes to deal with, which can often lead to hidden costs and unused material.

3. Unit Cost

The unit cost is only part of the evaluation when comparing carpet tile to broadloom for your hotel. Waste is a big consideration with total project cost. We can develop project specific ROI's to compare total project cost for your individual property.

4. 15 Year Warranty

All Interface Hospitality products are hard wearing, provide lasting protection against excessive surface wear, edge ravel, backing separation, shrinking, stretching, permanent soiling and staining.

5. Selective Replacement

Whether you're replacing a single Guestroom, a corridor, or an entire hotel, you can do so without disruption. Interface Hospitality's selective replacement enables old flooring to be replaced quickly and efficiently any day of the week, your carpet replacement costs can be cut by up to 50%.

6. Intersept®

Mold Protection no matter what's spilled on the floor, our proprietary antimicrobial preservative, Intersept®, protects our modular carpet against the growth of odor-causing bacteria guaranteed. With proper maintenance, Intersept treated carpet safely and effectively inhibits the growth of mold and other bacteria so your floors are always fresh. All Interface carpet is standard with Intersept.

7. Protekt²

Because stain resist technology - Protekt² - is built into Interface carpet tiles, a topical stain resist treatment is not necessary. The additional polymer is included when nylon is manufactured so it permanently increases stain resistance. We conducted stain tests on our products and compared them to products with a topical treatment. The results? Our uncoated fibers performed just as well as the treated ones. Additionally, the fluorinated chemicals traditionally used in stain resist treatments, when they do wash off, persist in the environment for thousands of years. With Protekt², you get permanent stain resistance, not permanent pollution.

8. Ease of Handling

Carpet tile offers greater ease of handling, and installers have less liability related to possible mis-cutting of broadloom.

9. Installation

Order and installation is a breeze with our estimates, seaming diagrams and renderings.

10. 100% Solution-dyed Nylon

Vibrant color that does not fade. All Interface Hospitality carpet tiles are made from durable, stain resistant, 100% solution dyed nylon. Offering superior color fastness and a wide array of colors and textures, solution dyed nylon is less harmful to the environment, using no water or toxic chemicals in the manufacturing process.

11. Various Sizes

Using, 50cm, 1m, 25cm x 1m and 50cm x 1m tiles allows for optimal pattern repeats, asymmetrical or symmetrical designs and color use. It also allows design to define spaces / nesting within larger areas.

12. Integrated System

Interface modular tiles span a wide selection of designs that offer pattern, color and texture options for a myriad of flooring needs. Tiles come in a variety of shape and size modules that work seamlessly and interchangeably with each other. This compatibility allows for holistic flooring solutions with expansive design flexibility.

13. TacTiles®

No Glue Installation. Installation or reconfiguration with our glue-free TacTiles installation system means there's no glue smell and no drying time. Guests can use the room as soon as the last piece is laid and all they'll notice is a beautiful floor. <https://goo.gl/syJN1B>

14. Sustainable Choice

Environmental Responsibility. Interface Hospitality was the industry's first to earn an EPD (Environmental Product Declaration), which evaluates consistent factors based on full lifecycle assessment (LCA). We now have published EPDs for 99% of our products globally. In addition, all of our products with GlasBac®, and GlasBacRE backings meet NSF/ANSI 140 Sustainable Carpet Assessment Standard (SCAS) for carpet.

15. Carpet Recycling Program: ReEntry®

Recyclable is Now a Reality. Through our ReEntry program and partnerships with our fiber suppliers and recycling centers throughout North America, separated Type 6 and 6,6 nylon are recycled into new 6 and 6,6 nylon, while separated GlasBac® and similar competitor backings are recycled into GlasBac®RE non-virgin PVC backing using our Cool Blue™ technology. The result? Products with up to 80% total recycled content, including as much as 35% post-consumer content.

16. Cool Carpet™

Our third party verified carbon offset program zeroes out all greenhouse gas (GHG) emissions associated with the entire lifecycle of your carpet. An independent testing program that identifies carpet and adhesives with very low emissions of VOCs to help improve indoor air quality.

17. Dimensional Stability

Interface GlasBac® backing has been tested and proven in the marketplace for over 30 years. Engineered to provide superior dimensional stability, GlasBac® modular carpet tiles will not stretch or shrink when exposed to heat or cold, heavy foot or rolling traffic.

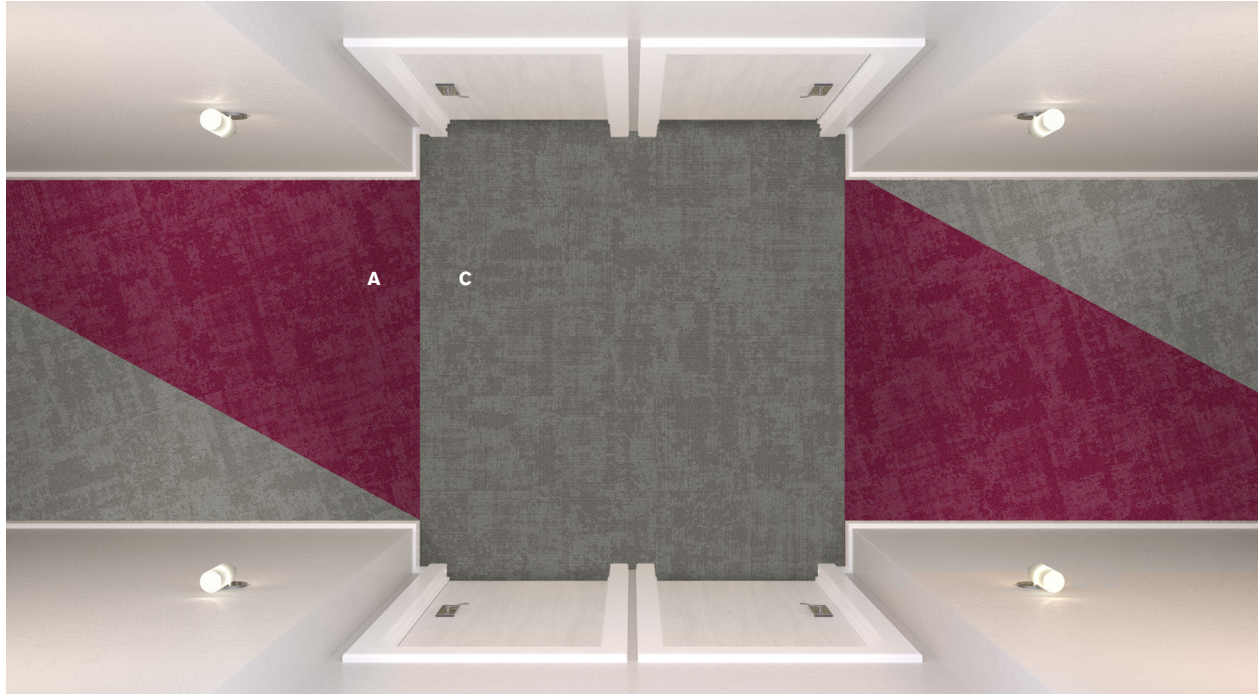
18. Sound Absorption

Quite space is essential when people need to focus and concentrate. Sound absorption is therefore critical when colleagues need to collaborate without becoming a distraction to their neighbors. Interface Hospitality carpets provide high sound absorption and insulation.

Eclectic Corridor Prototype Order Information

FOR PRICING CONTACT: Mike Webb mike.webb@interface.com or your local Account Executive.

FOR ORDER ENTRY / SHIPPING CONTACT: Customer Service 1.888.228.6301 CustomerSuccess-Hospitality@interface.com



Corridor Products	Marriott Spec. #	Sample #	Color #	Size	Installation
Cloud Cover A	298779	267549-038	188417	50cm x 50cm	Non Directional
Cloud Cover C	298781	267549-052	188419	50cm x 50cm	Non Directional

Installation Specifications	Marriott Spec.#	Description
2000 Plus		Adhesive
Pad / Underlayment	NOT REQUIRED	

* Floors 1 and 3 receive the blue color and 2 and 4 receive the magenta color.

CORRIDOR INSTALLATION PLAN

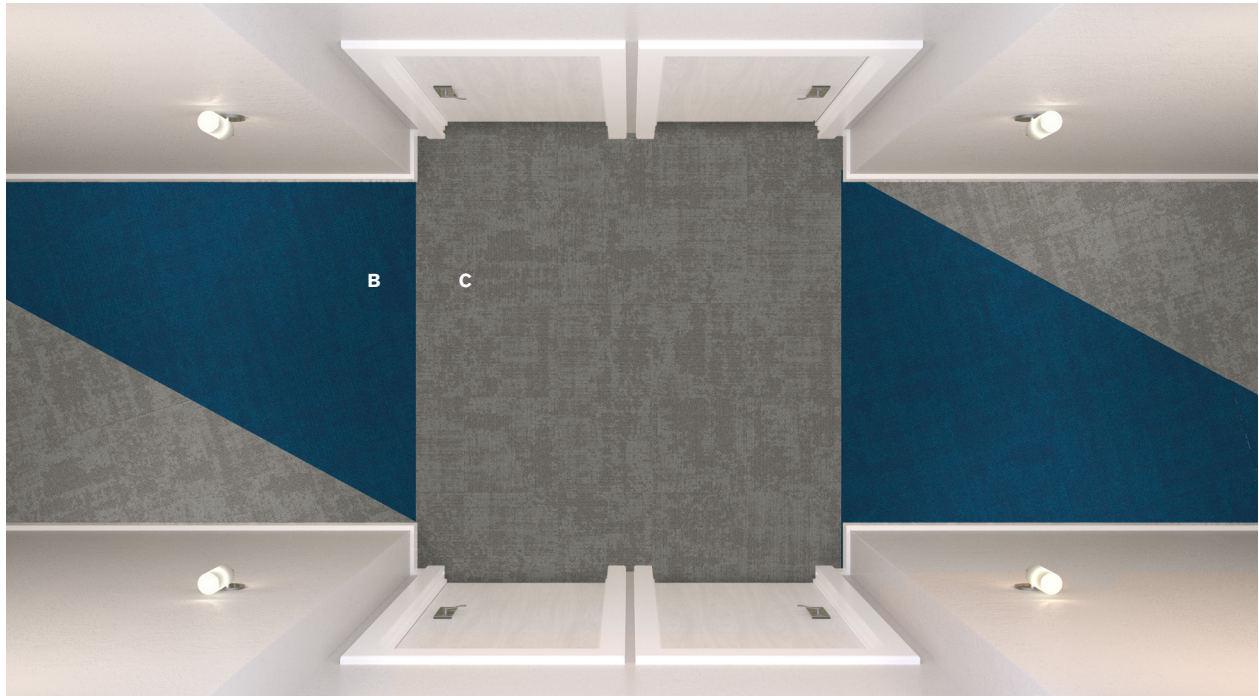
All quantities are estimates only and are based on plans provided. Site measurements and field verifications are recommended to ensure accuracy. These quantities are not intended to be used for material ordering purposes. Since waste factors may vary by installer, actual ordering quantities are the responsibility of your flooring contractor.



Eclectic Corridor Prototype Order Information

FOR PRICING CONTACT: Mike Webb mike.webb@interface.com or your local Account Executive.

FOR ORDER ENTRY / SHIPPING CONTACT: Customer Service 1.888.228.6301 CustomerSuccess-Hospitality@interface.com



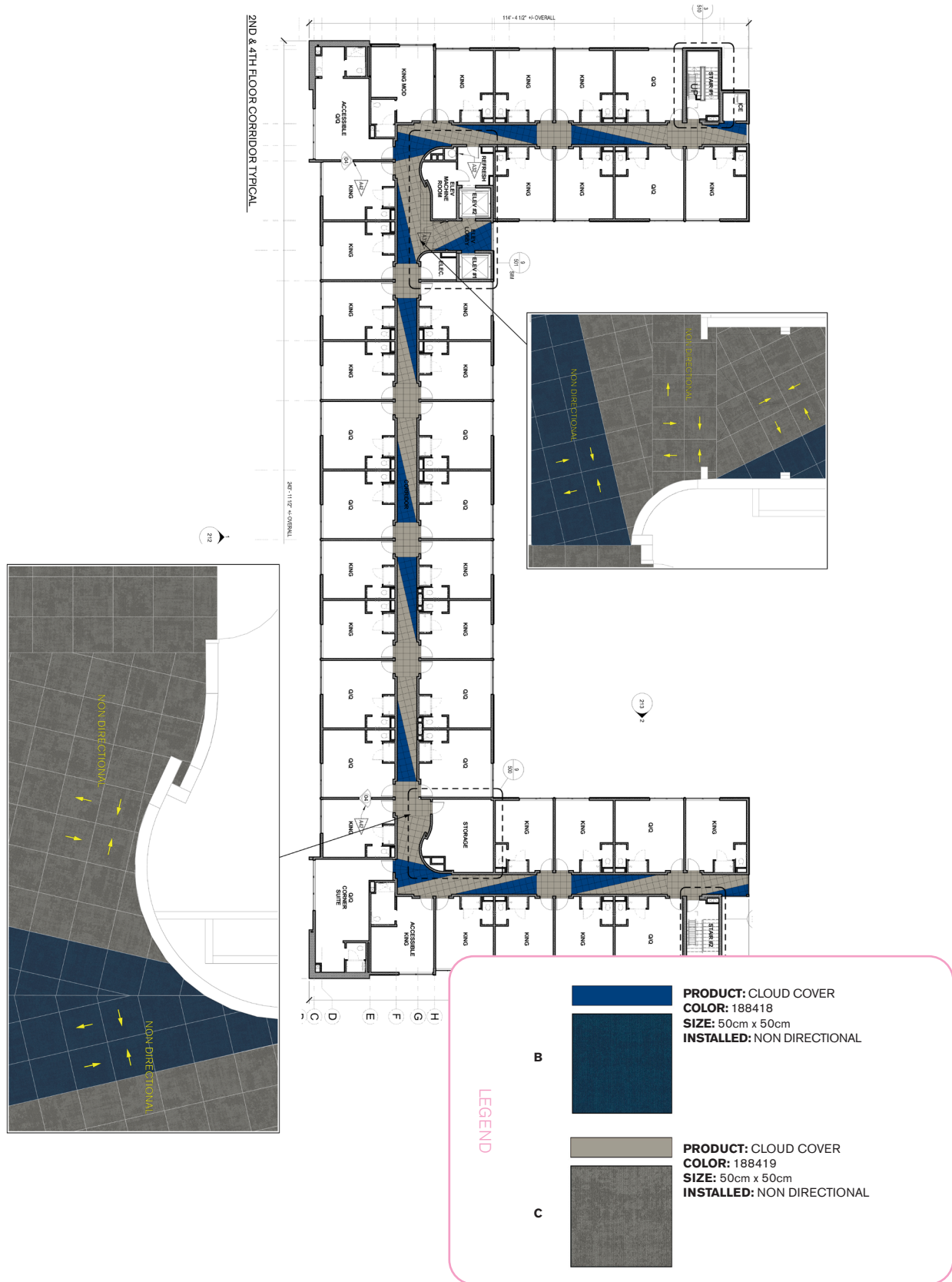
Corridor Products	Marriott Spec. #	Sample #	Color #	Size	Installation
Cloud Cover B	298780	267549-040	188418	50cm x 50cm	Non Directional
Cloud Cover C	298781	267549-052	188419	50cm x 50cm	Non Directional

Installation Specifications	Marriott Spec.#	Description
2000 Plus		Adhesive
Pad / Underlayment	NOT REQUIRED	

* Floors 1 and 3 receive the blue color and 2 and 4 receive the magenta color.

CORRIDOR INSTALLATION PLAN

All quantities are estimates only and are based on plans provided. Site measurements and field verifications are recommended to ensure accuracy. These quantities are not intended to be used for material ordering purposes. Since waste factors may vary by installer, actual ordering quantities are the responsibility of your flooring contractor.



Eclectic Guestroom & Generica America Rug Prototype Order Information

FOR PRICING CONTACT: Mike Webb mike.webb@interface.com or your local Account Executive.

FOR ORDER ENTRY / SHIPPING CONTACT: Customer Service 1.888.228.6301 CustomerSuccess-Hospitality@interface.com

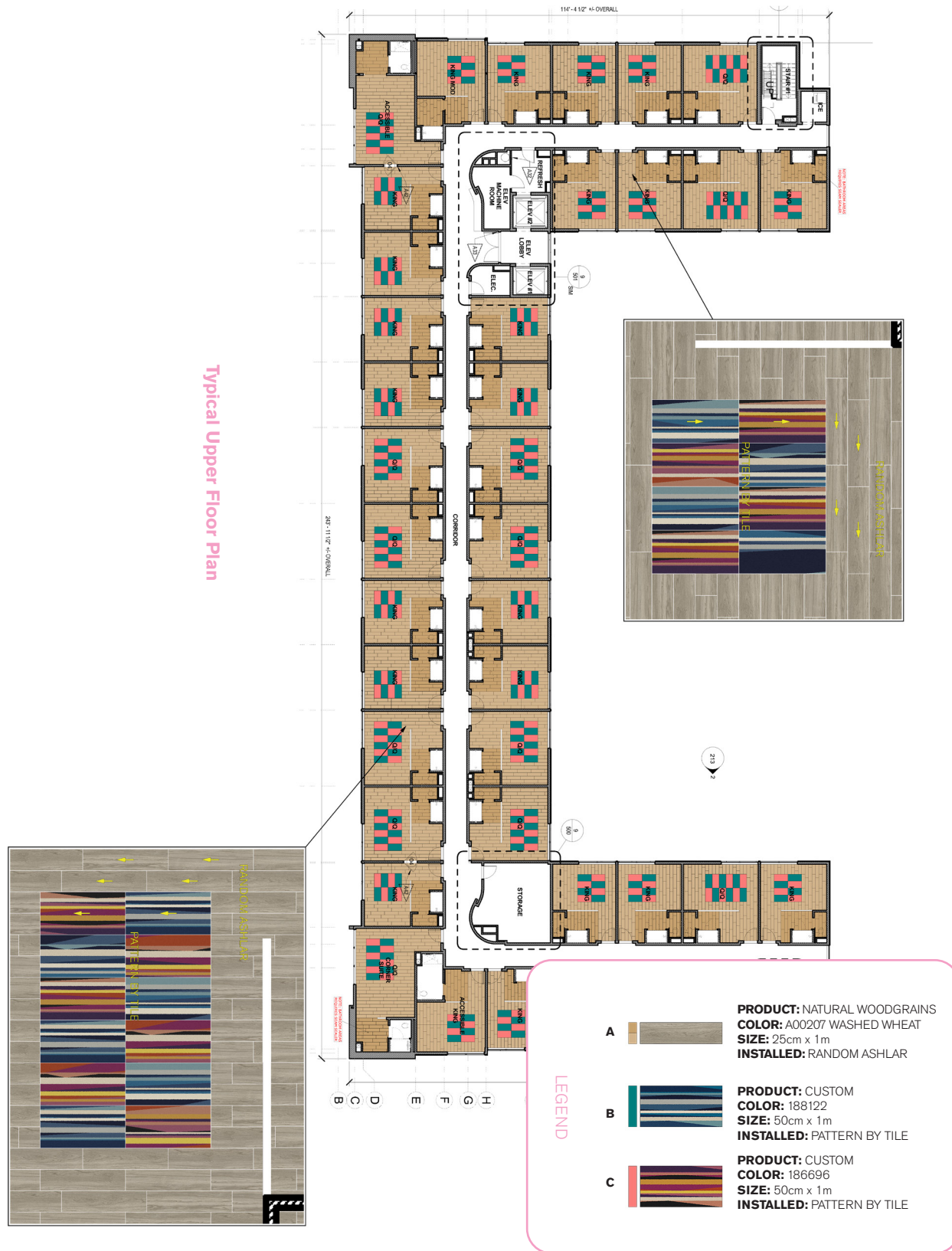


Guestroom Products	Marriott Spec. #	Kit #	Color #	Size	Installation
LVT Natural Woodgrains	276813		A00207 Washed Wheat	25cm x 1m	Random Ashlar
Area Rug Kit	299179	98-1110-25	188122 & 186696	3m x 2m Queen Room	Pattern By Tile
Area Rug Kit	299177	98-1110-24	188122 & 186696	2m x 2m King Room	Pattern By Tile
Installation Specifications	Marriott Spec.#	Description			
XL2000 PLUS Adhesive		Double stick install			
Selitbloc LVT Underlayment	276822	Underlayment for entire room with carpet and LVT system			

*Pad not required with carpet tile but acoustical underlayment is required with the LVT and carpet tile system

GUESTROOM INSTALLATION PLAN

All quantities are estimates only and are based on plans provided. Site measurements and field verifications are recommended to ensure accuracy. These quantities are not intended to be used for material ordering purposes. Since waste factors may vary by installer, actual ordering quantities are the responsibility of your flooring contractor.



Eclectic Guestroom & Big Green Rug Prototype Order Information

FOR PRICING CONTACT: Mike Webb mike.webb@interface.com or your local Account Executive.

FOR ORDER ENTRY / SHIPPING CONTACT: Customer Service 1.888.228.6301 CustomerSuccess-Hospitality@interface.com



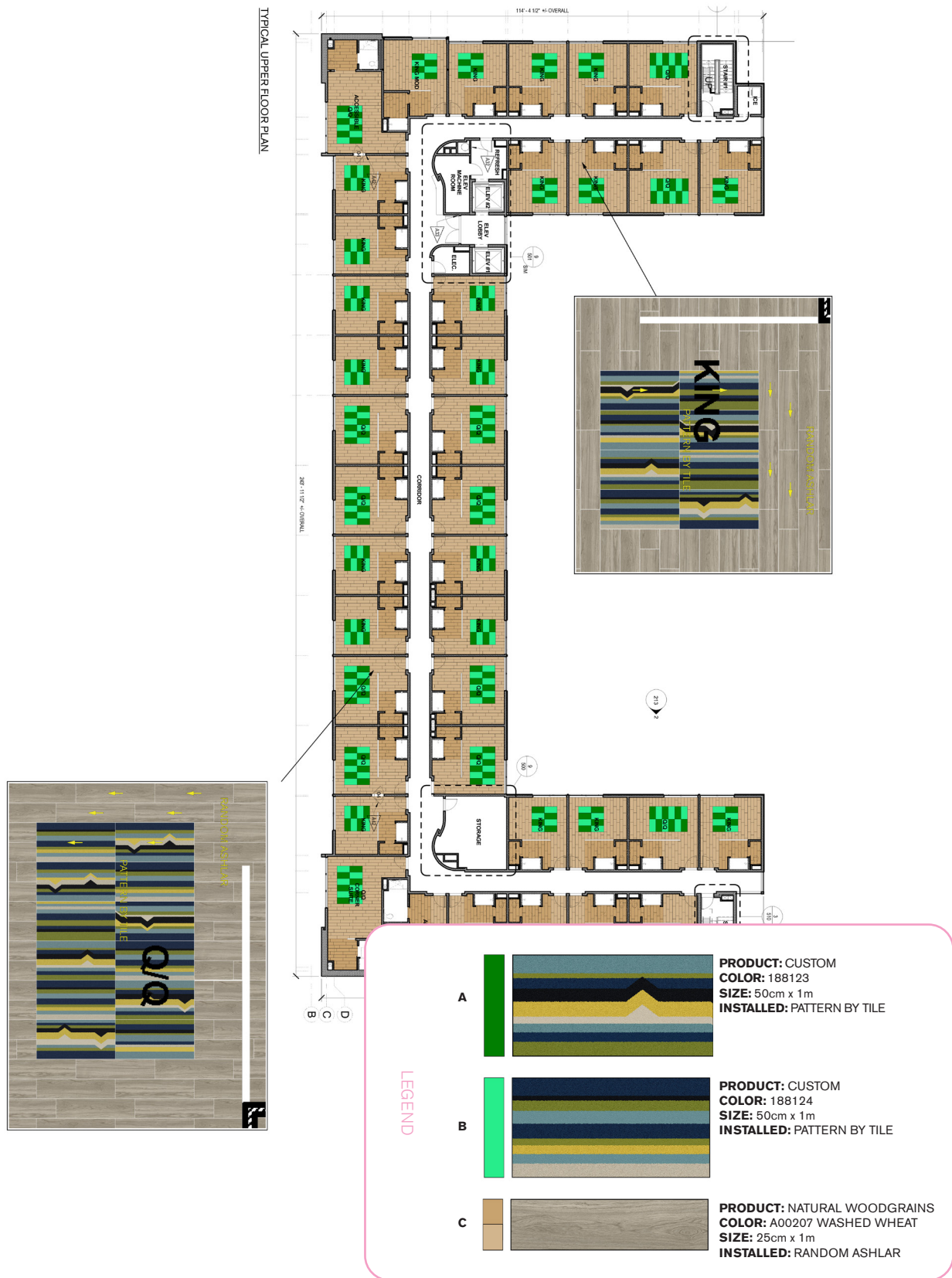
Guestroom Products	Marriott Spec. #	Kit #	Color #	Size	Installation
LVT Natural Woodgrains	276813		A00207 Washed Wheat	25cm x 1m	Random Ashlar
Area Rug Kit	299140	98-1110-23	188123 & 188124	3m x 2m Queen Room	Pattern By Tile
Area Rug Kit	299142	98-1110-22	188123 & 188124	2m x 2m King Room	Pattern By Tile

Installation Specifications	Marriott Spec.#	Description
XL2000 PLUS Adhesive		Double stick install
Selitbloc LVT Underlayment	276822	Underlayment for entire room with carpet and LVT system

*Pad not required with carpet tile but acoustical underlayment is required with the LVT and carpet tile system

GUESTROOM INSTALLATION PLAN

All quantities are estimates only and are based on plans provided. Site measurements and field verifications are recommended to ensure accuracy. These quantities are not intended to be used for material ordering purposes. Since waste factors may vary by installer, actual ordering quantities are the responsibility of your flooring contractor.



Eclectic Guestroom & Electric Grid Rug Prototype Order Information

FOR PRICING CONTACT: Mike Webb mike.webb@interface.com or your local Account Executive.

FOR ORDER ENTRY / SHIPPING CONTACT: Customer Service 1.888.228.6301 CustomerSuccess-Hospitality@interface.com

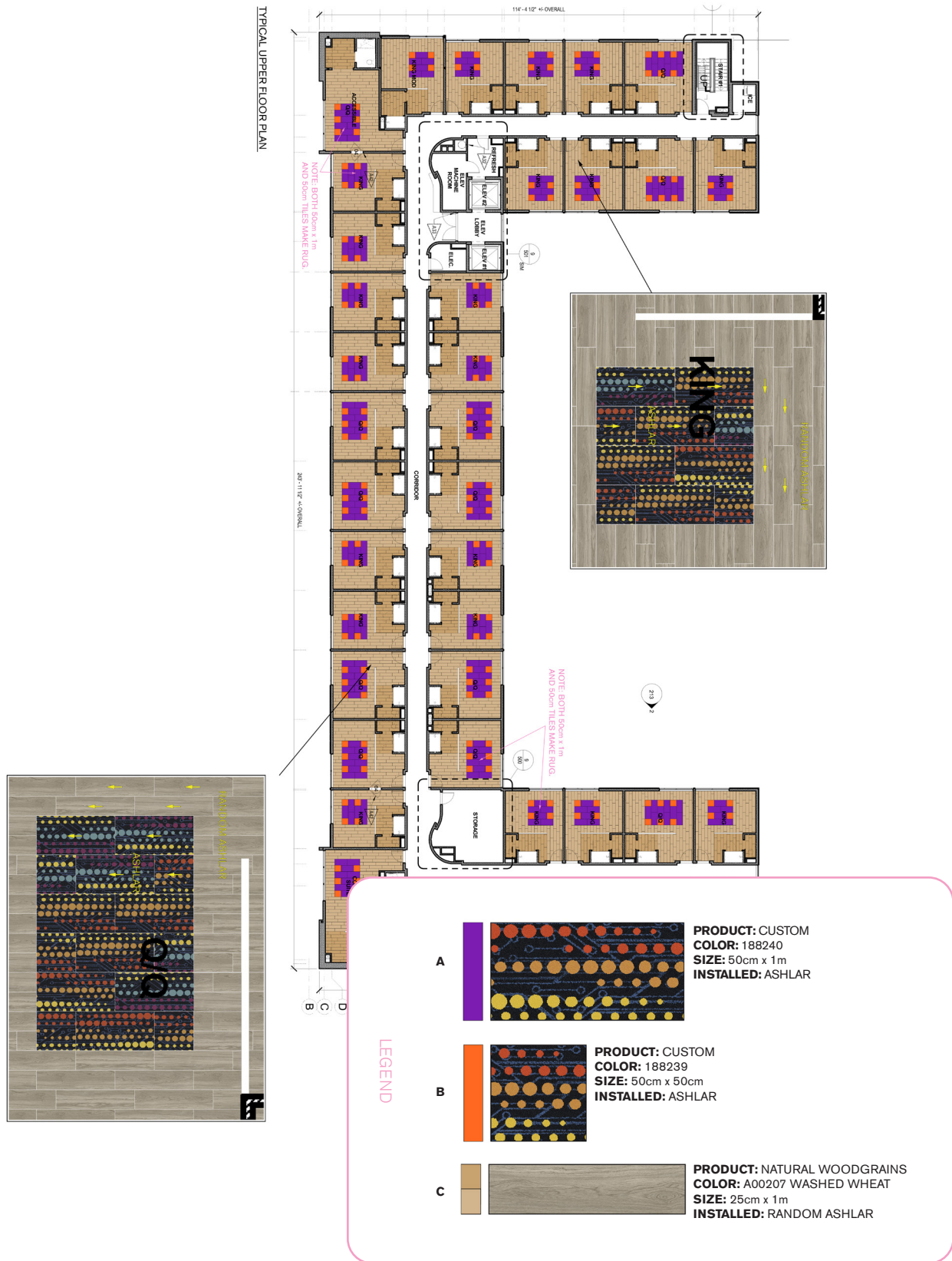


Guestroom Products	Marriott Spec. #	Kit #	Color #	Size	Installation
LVT Natural Woodgrains	276813		A00207 Washed Wheat	25cm x 1m	Random Ashlar
Area Rug Kit	300331	98.1110.33	188239 & 188240	3m x 2m Queen Room	Pattern By Tile
Area Rug Kit	300335	98.1110.32	188240 & 188239	2m x 2m King Room	Pattern By Tile
Installation Specifications	Marriott Spec.#	Description			
XL2000 PLUS Adhesive		Double stick install			
Selitbloc LVT Underlayment	276822	Underlayment for entire room with carpet and LVT system			

*Pad not required with carpet tile but acoustical underlayment is required with the LVT and carpet tile system

GUESTROOM INSTALLATION PLAN

All quantities are estimates only and are based on plans provided. Site measurements and field verifications are recommended to ensure accuracy. These quantities are not intended to be used for material ordering purposes. Since waste factors may vary by installer, actual ordering quantities are the responsibility of your flooring contractor.



Eclectic Guestroom & Electric Grid Rug Prototype Order Information

FOR PRICING CONTACT: Mike Webb mike.webb@interface.com or your local Account Executive.

FOR ORDER ENTRY / SHIPPING CONTACT: Customer Service 1.888.228.6301 CustomerSuccess-Hospitality@interface.com



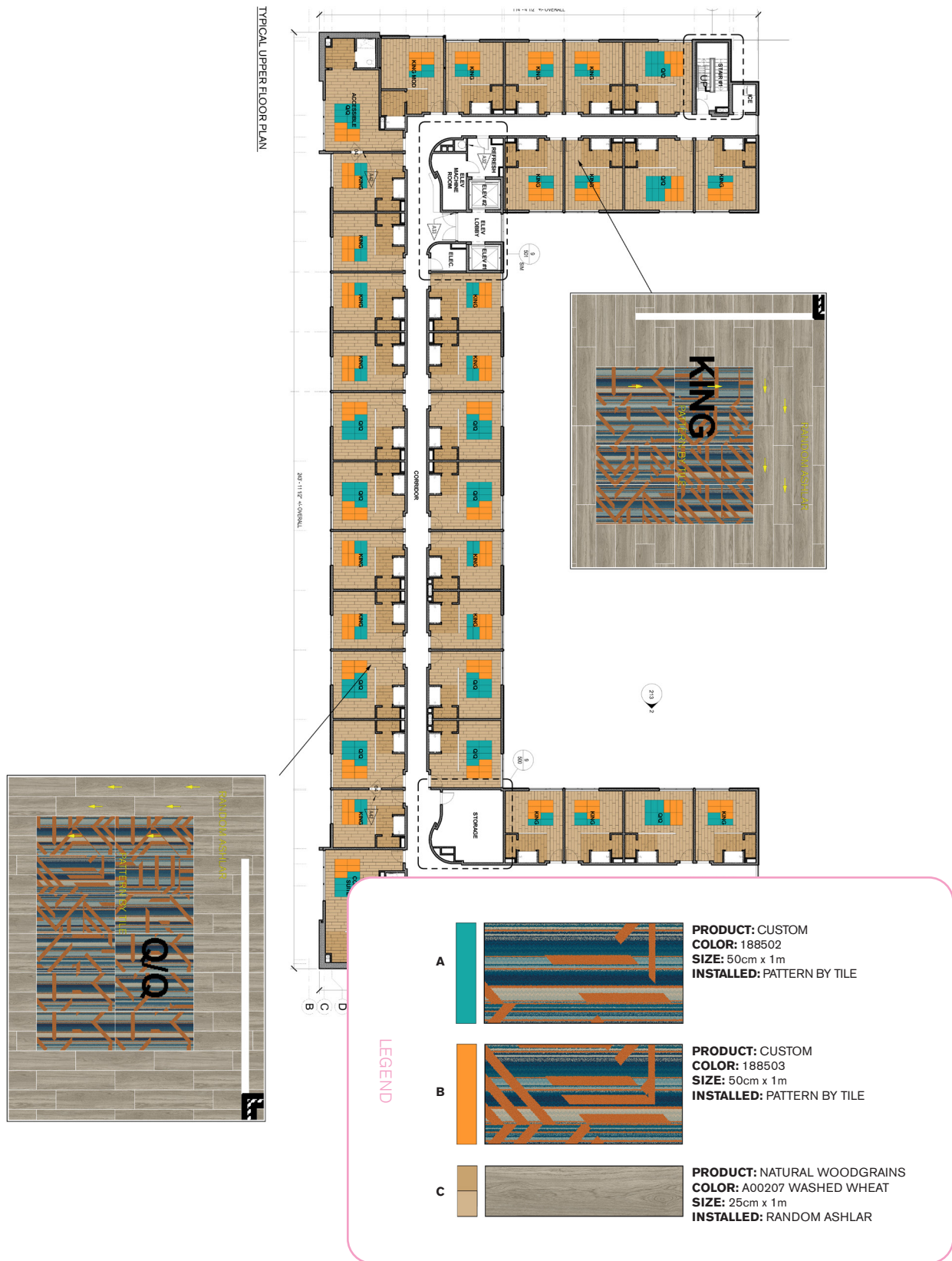
Guestroom Products	Marriott Spec. #	Kit #	Color #	Size	Installation
Area Rug Kit	304063	98.1110.36	188502 & 188503	2m x 3m	Ashlar
Area Rug Kit	304065	98.1110.37	to come	2m x 2m	Ashlar
LVT Natural Woodgrains	276813		A00207 Washed Wheat	25cm x 1m	Random Ashlar

Installation Specifications	Marriott Spec.#	Description
XL2000 PLUS Adhesive		Double stick install
Selitbloc LVT Underlayment	276822	Underlayment for entire room with carpet and LVT system

*Pad not required with carpet tile but acoustical underlayment is required with the LVT and carpet tile system

GUESTROOM INSTALLATION PLAN

All quantities are estimates only and are based on plans provided. Site measurements and field verifications are recommended to ensure accuracy. These quantities are not intended to be used for material ordering purposes. Since waste factors may vary by installer, actual ordering quantities are the responsibility of your flooring contractor.



Back Of House Prototype Order Information

FOR PRICING CONTACT: Mike Webb mike.webb@interface.com or your local Account Executive.

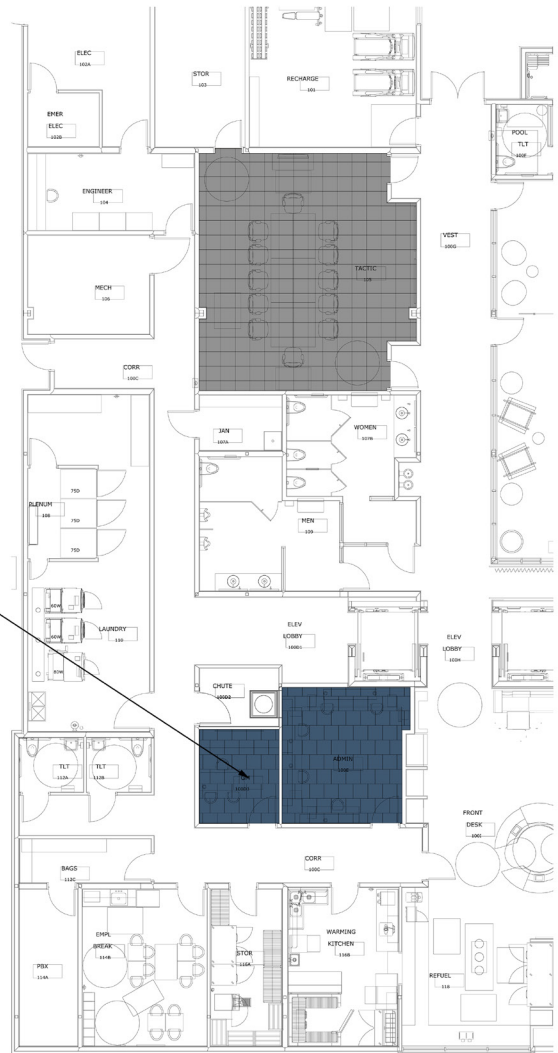
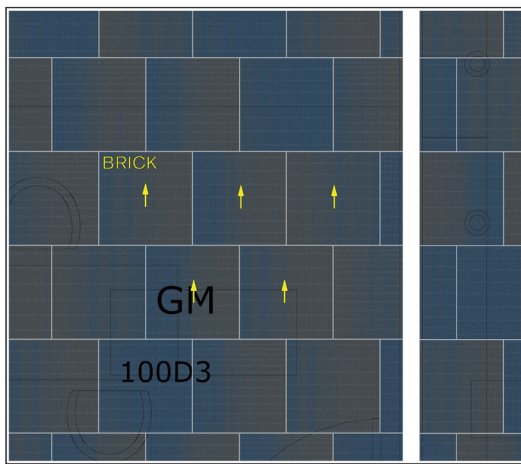
FOR ORDER ENTRY / SHIPPING CONTACT: Customer Service 1.888.228.6301 CustomerSuccess-Hospitality@interface.com



Back Of House Product	Marriott Spec. #	Sample #	Color #	Size	Installation
RMS 303 A	278898	255873-047	179710	50cm x 50cm	Brick
Installation Specifications	Marriott Spec.#	Description			
TacTiles for Installation (500 TacTiles/Roll)	250475	60sq yds/ Roll Adhesive			
Pad / Underlayment	NOT REQUIRED				

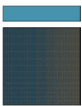
BACK OF HOUSE INSTALLATION PLAN

All quantities are estimates only and are based on plans provided. Site measurements and field verifications are recommended to ensure accuracy. These quantities are not intended to be used for material ordering purposes. Since waste factors may vary by installer, actual ordering quantities are the responsibility of your flooring contractor.



LEGEND

A



PRODUCT: RMS303
COLOR: 179710
SIZE: 50cm
INSTALLED: BRICK

Cynergy Corridor Prototype Order Information

FOR PRICING CONTACT: Mike Webb mike.webb@interface.com or your local Account Executive.

FOR ORDER ENTRY / SHIPPING CONTACT: Customer Service 1.888.228.6301 CustomerSuccess-Hospitality@interface.com



Carpet tiles save approximately 15-20% in product waste verses broadloom, based on prototype layout.
No Pad Required

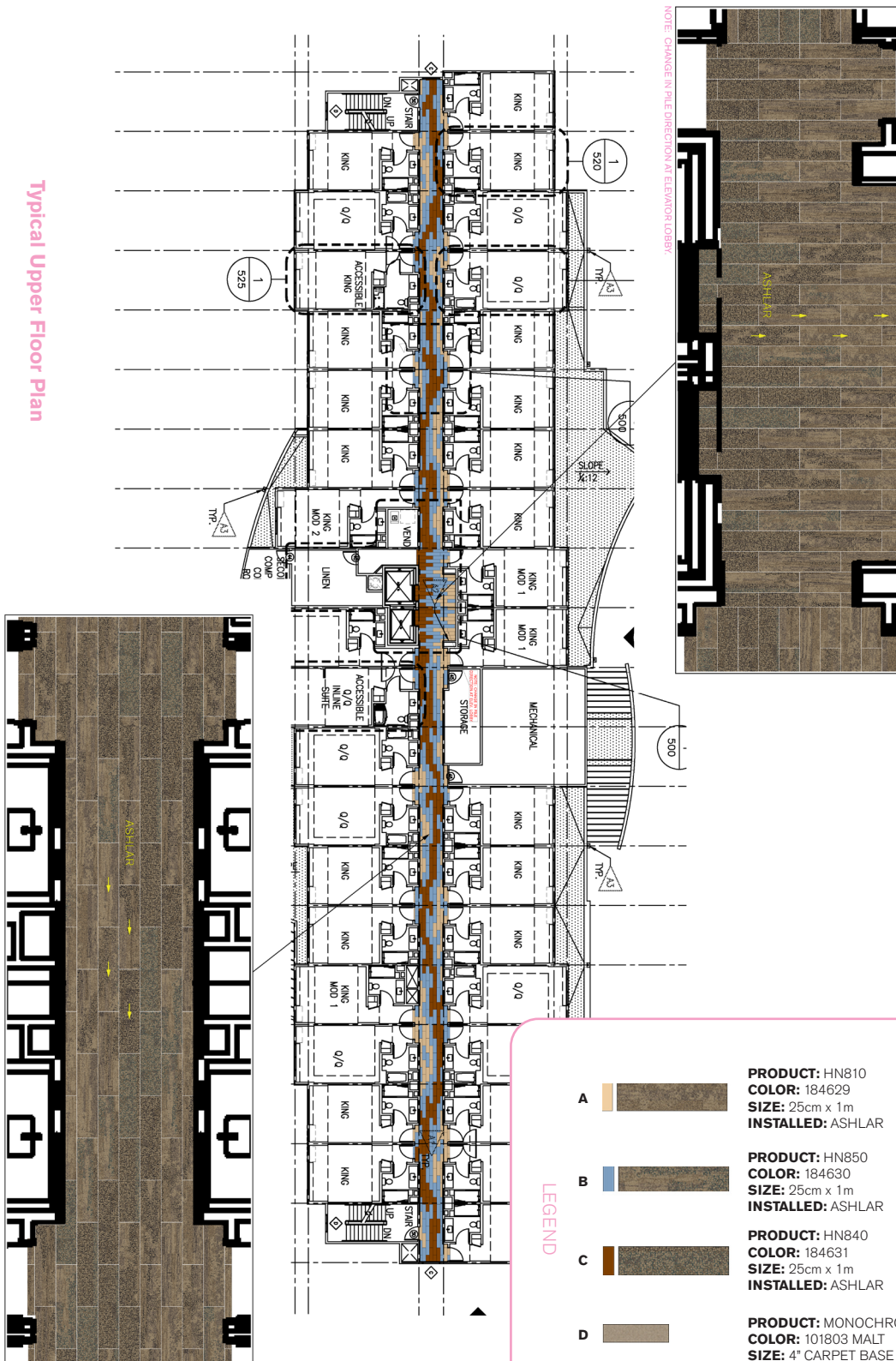
Corridor Products	Marriott Spec. #	Sample #	Color #	Size	Installation
HN810 A	257087	257078-062	184629	25cm x 1m	Pattern By Tile
HN850 B	257094	257078-063	184630	25cm x 1m	Pattern By Tile
HN840 C	257090	257078-064	184631	25cm x 1m	Pattern By Tile
Monochrome 4" Base	257878		101803 Malt	4" x 25' Rolls	

Installation Specifications	Marriott Spec.#	Description
TacTiles for Installation (500 TacTiles/Roll)	250475	60sq yds/ Roll Adhesive
Pad / Underlayment	NOT REQUIRED	

CORRIDOR INSTALLATION PLAN

All quantities are estimates only and are based on plans provided. Site measurements and field verifications are recommended to ensure accuracy. These quantities are not intended to be used for material ordering purposes. Since waste factors may vary by installer, actual ordering quantities are the responsibility of your flooring contractor.

Typical Upper Floor Plan



Cynergy Lounge & Meeting Room Plum Prototype Order Information

FOR PRICING CONTACT: Mike Webb mike.webb@interface.com or your local Account Executive.

FOR ORDER ENTRY / SHIPPING CONTACT: Customer Service 1.888.228.6301 CustomerSuccess-Hospitality@interface.com



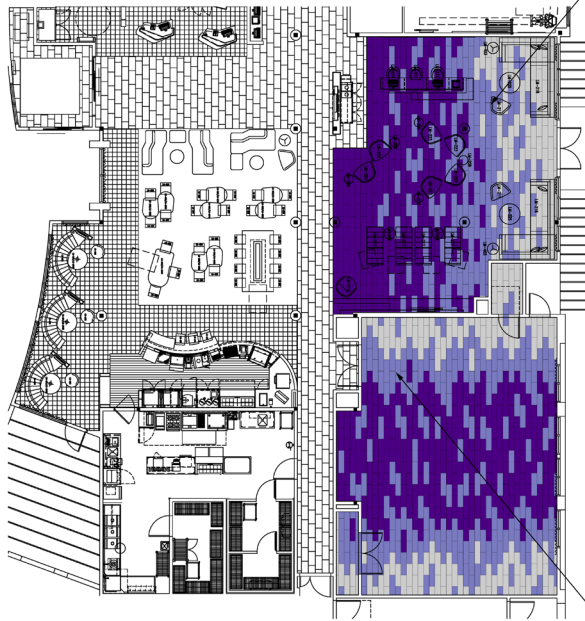
Lounge / Meeting Room Products	Marriott Spec. #	Sample #	Color #	Size	Installation
HN810 Grey Texture A	248549		104214 Nickel	25cm x 1m	Pattern By Tile
HN850 Plum Mix B	248541	259606-034	183430	25cm x 1m	Pattern By Tile
HN840 Plum Pebbles C	248545	259606-035	183431	25cm x 1m	Pattern By Tile
4" Base	249313		4936 Mercury	4" x 25' Rolls	

Installation Specifications	Marriott Spec.#	Description
TacTiles for Installation (500 TacTiles/Roll)	250475	60sq yds/ Roll Adhesive
Pad / Underlayment	NOT REQUIRED	





LOUNGE & MEETING ROOM INSTALLATION PLAN

All quantities are estimates only and are based on plans provided. Site measurements and field verifications are recommended to ensure accuracy. These quantities are not intended to be used for material ordering purposes. Since waste factors may vary by installer, actual ordering quantities are the responsibility of your flooring contractor.

Typical Public Space



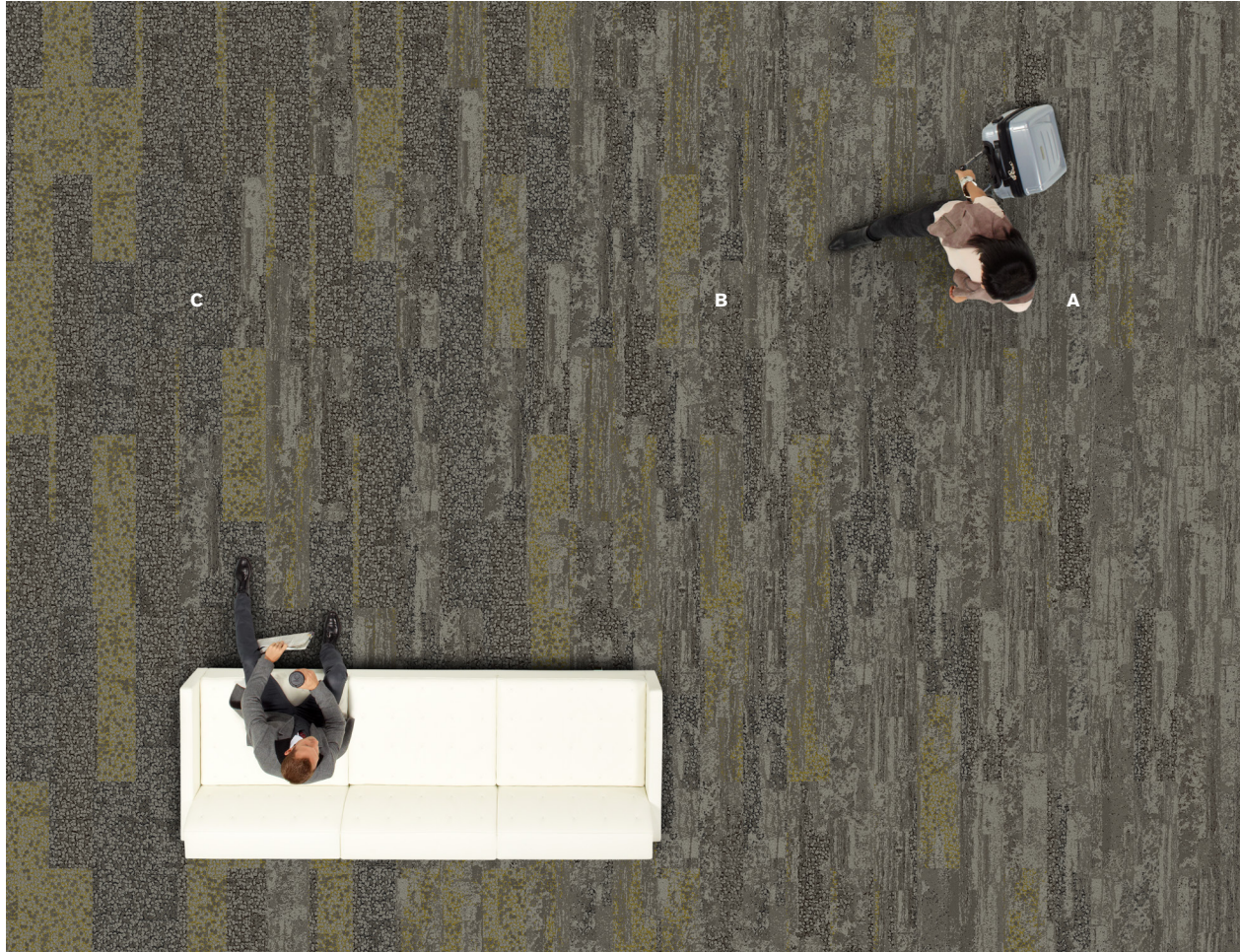
LEGEND

A		PRODUCT: HN810 COLOR: 104214 NICKEL SIZE: 25cm x 1m INSTALLED: ASHLAR
B		PRODUCT: HN850 COLOR: 183430 SIZE: 25cm x 1m INSTALLED: ASHLAR
C		PRODUCT: HN840 COLOR: 183431 SIZE: 25cm x 1m INSTALLED: ASHLAR
D		PRODUCT: MENAGERIE COLOR: 4936 MERCURY SIZE: 4" CARPET BASE

Cynergy Lounge & Meeting Room Citron Prototype Order Information

FOR PRICING CONTACT: Mike Webb mike.webb@interface.com or your local Account Executive.

FOR ORDER ENTRY / SHIPPING CONTACT: Customer Service 1.888.228.6301 CustomerSuccess-Hospitality@interface.com



Lounge / Meeting Room Products	Marriott Spec. #	Sample #	Color #	Size	Installation
HN810 Grey Texture A	248549		104214 Nickel	25cm x 1m	Pattern By Tile
HN850 Citron Mix B	248629	259606-045	183653	25cm x 1m	Pattern By Tile
HN840 Citron Pebbles C	248627	259606-046	183654	25cm x 1m	Pattern By Tile
4" Base	249313		4936 Mercury	4" x 25' Rolls	

Installation Specifications	Marriott Spec.#	Description
TacTiles for Installation (500 TacTiles/Roll)	250475	60sq yds/ Roll Adhesive
Pad / Underlayment	NOT REQUIRED	

LOUNGE & MEETING ROOM INSTALLATION PLAN

All quantities are estimates only and are based on plans provided. Site measurements and field verifications are recommended to ensure accuracy. These quantities are not intended to be used for material ordering purposes. Since waste factors may vary by installer, actual ordering quantities are the responsibility of your flooring contractor.

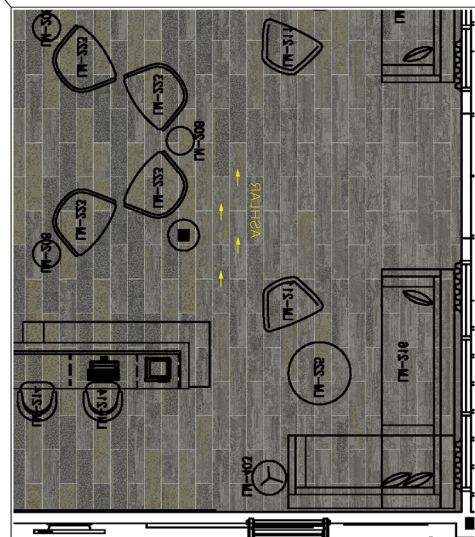
Typical Public Space



Meeting Room

LEGEND

- A**  **PRODUCT:** HN810
COLOR: 104214 NICKEL
SIZE: 25cm x 1m
INSTALLED: ASHLAR
- B**  **PRODUCT:** HN850
COLOR: 183653
SIZE: 25cm x 1m
INSTALLED: ASHLAR
- C**  **PRODUCT:** HN840
COLOR: 183654
SIZE: 25cm x 1m
INSTALLED: ASHLAR
- D**  **PRODUCT:** MENAGERIE
COLOR: 4936 MERCURY
SIZE: 4" CARPET BASE

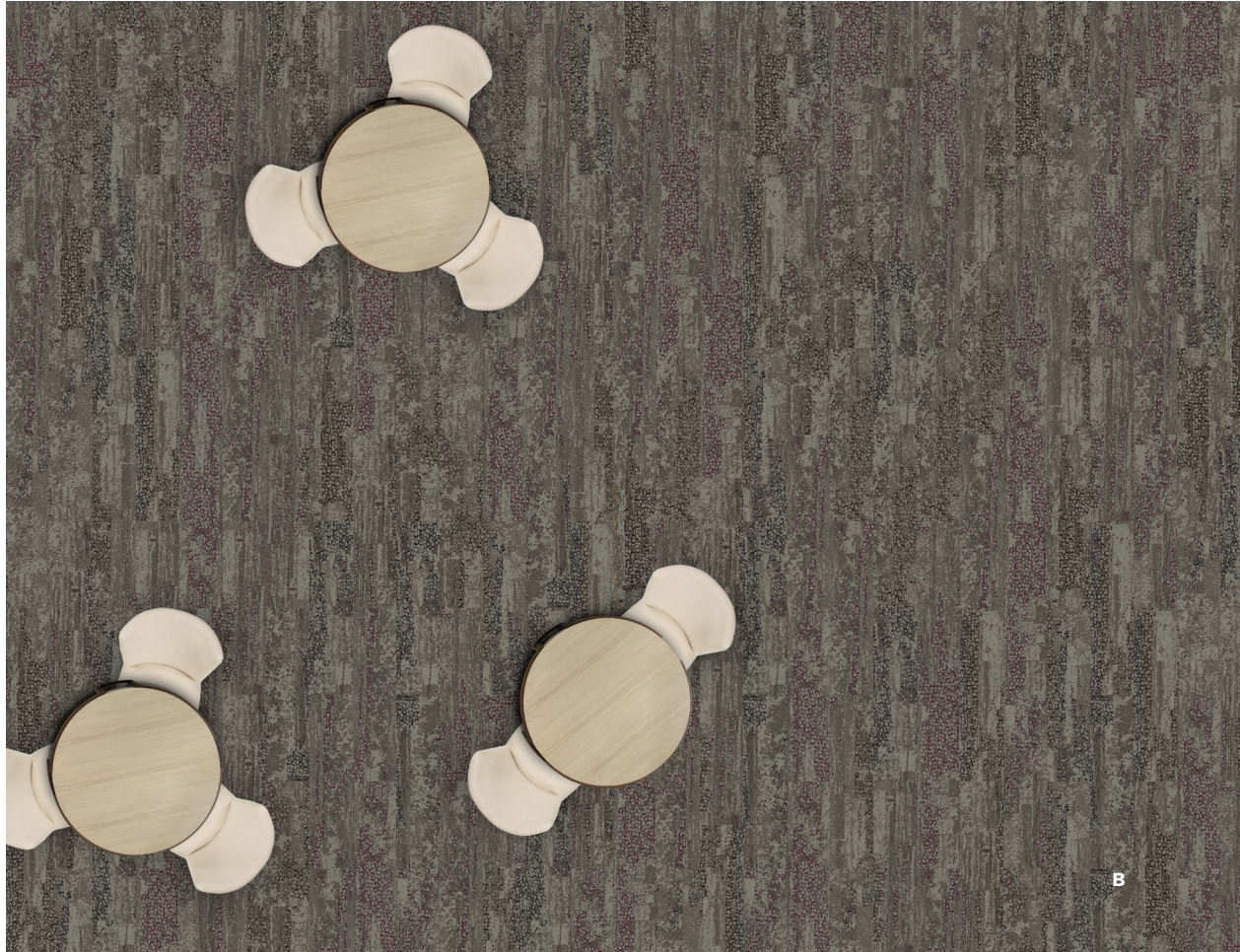


Lounge

Cynergy Bistro & Area Rug Plum Prototype Order Information

FOR PRICING CONTACT: Mike Webb mike.webb@interface.com or your local Account Executive.

FOR ORDER ENTRY / SHIPPING CONTACT: Customer Service 1.888.228.6301 CustomerSuccess-Hospitality@interface.com

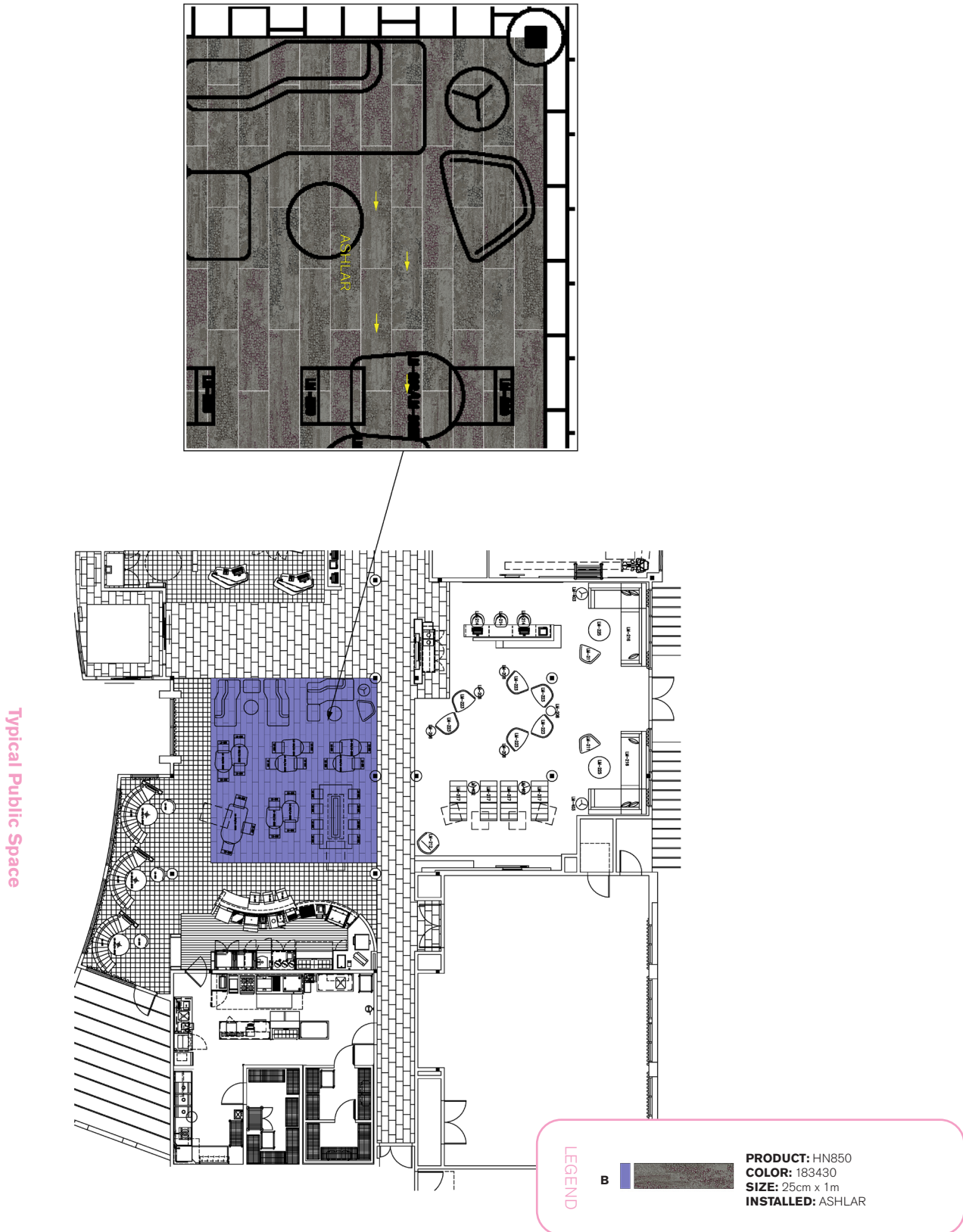


Bistro Products	Marriott Spec. #	Sample # / Kit #	Color #	Size	Installation
HN850 Plum Mix B	248541	259606-034	183430	25cm x 1m	Pattern By Tile
Plum (Area Rug Kit)	263256	98.1111.01 Gen 6	183430	98.42" x 246.06"	
Plum (Area Rug Kit)	300222	98.1110.29	183430	177.2" x 78.7"	

Installation Specifications	Marriott Spec.#	Description
TacTiles for Installation (500 TacTiles/Roll)	250475	60sq yds/ Roll Adhesive
Pad / Underlayment	NOT REQUIRED	

BISTRO INSTALLATION PLAN

All quantities are estimates only and are based on plans provided. Site measurements and field verifications are recommended to ensure accuracy. These quantities are not intended to be used for material ordering purposes. Since waste factors may vary by installer, actual ordering quantities are the responsibility of your flooring contractor.

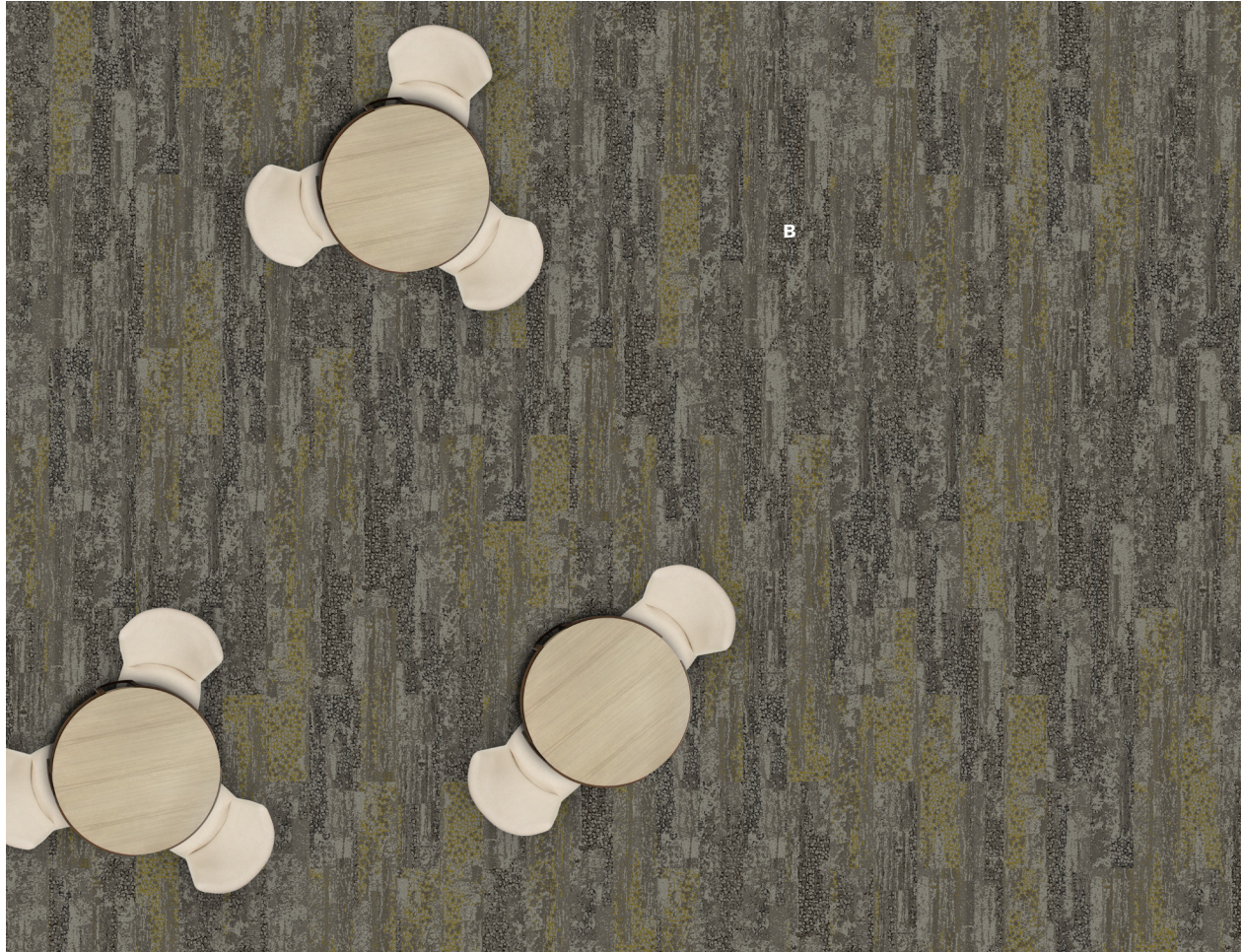


Typical Public Space

Cynergy Bistro & Area Rug Citron Prototype Order Information

FOR PRICING CONTACT: Mike Webb mike.webb@interface.com or your local Account Executive.

FOR ORDER ENTRY / SHIPPING CONTACT: Customer Service 1.888.228.6301 CustomerSuccess-Hospitality@interface.com

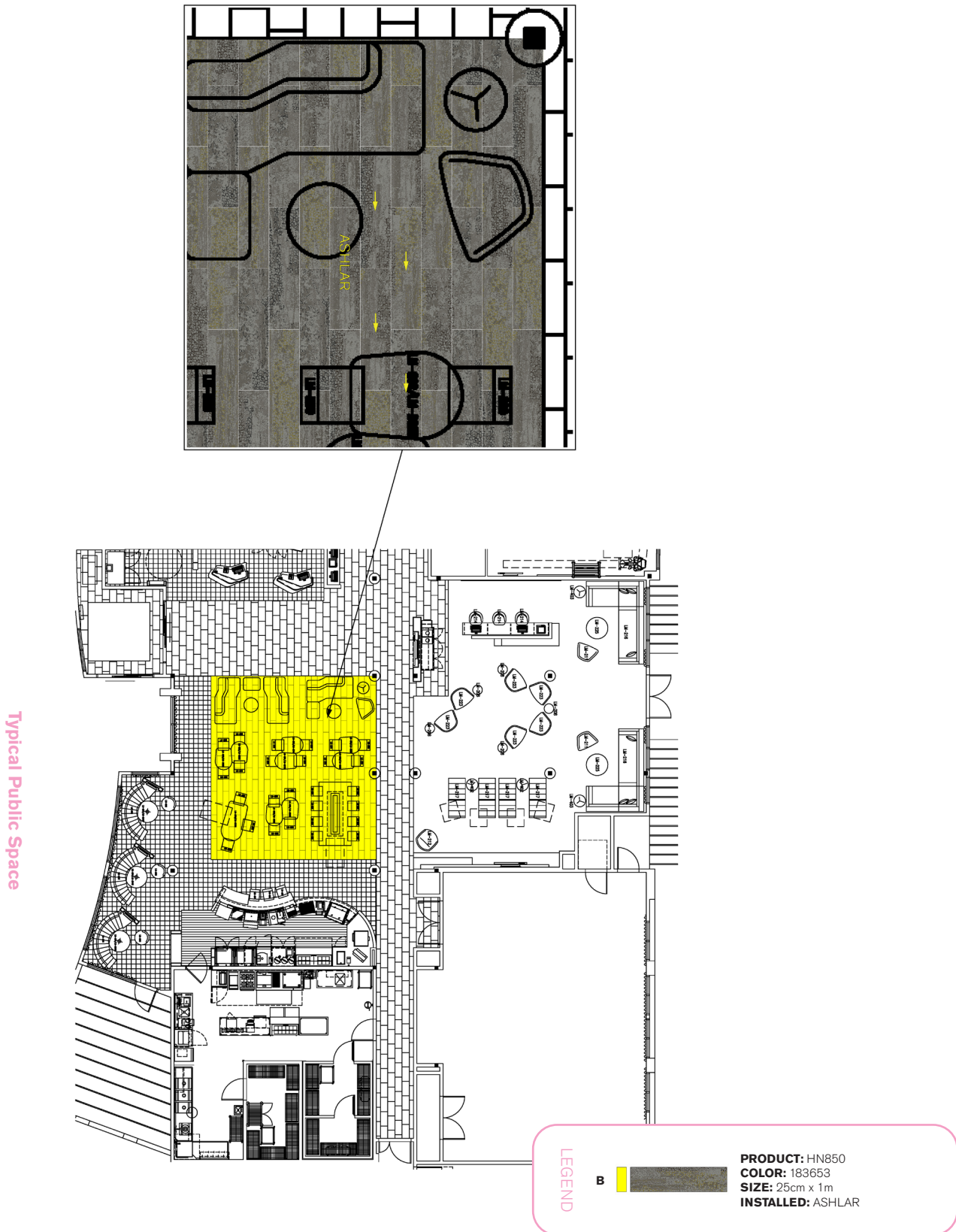


Bistro Products	Marriott Spec. #	Sample # / Kit #	Color #	Size	Installation
HN850 Citron Mix B	248529	259606-045	183653	25cm x 1m	Pattern By Tile
Citron (Area Rug Kit)	263254	98.1110.02 GEN 6	183653	98.42" x 246.06"	
Citron (Area Rug Kit)	300220	98.1110.28	183653	177.2" x 78.7"	

Installation Specifications	Marriott Spec.#	Description
TacTiles for Installation (500 TacTiles/Roll)	250475	60sq yds/ Roll Adhesive
Pad / Underlayment	NOT REQUIRED	

BISTRO INSTALLATION PLAN

All quantities are estimates only and are based on plans provided. Site measurements and field verifications are recommended to ensure accuracy. These quantities are not intended to be used for material ordering purposes. Since waste factors may vary by installer, actual ordering quantities are the responsibility of your flooring contractor.



ACC King and King Mint Guestroom Prototype Order Information

FOR PRICING CONTACT: Mike Webb mike.webb@interface.com or your local Account Executive.

FOR ORDER ENTRY / SHIPPING CONTACT: Customer Service 1.800.634.6032 CustomerSuccess-Hospitality@interface.com



Guestroom Products	Marriott Spec. #	Kit #	Color #	Size	Installation
*LVT Option - Textured Woodgrains	313007		A00406 Antique Light Oak	25cm x 1 m	Ashlar
*LVT Option - Textured Woodgrains	313008		A00409 Ash Walnut	25cm x 1 m	Ashlar
ACC King Mint Area Rug Kit	313125	98-1110-43	189105	8'-6" x 12'-0"	Ashlar
King Mint Area Rug Kit	313128	98-1110-43	189105	8'-0" x 10'-8"	Ashlar
Installation Specifications	Marriott Spec.#	Description			
XL2000 PLUS Adhesive		Double stick install			
Selitbloc LVT Underlayment	276822	Underlayment for entire room with carpet and LVT system			

* Select from either LVT listed above. Antique Light Oak is pictured.

**Pad not required with carpet tile but acoustical underlayment is required with the LVT and carpet tile system

ACC King and King Plum Guestroom Prototype Order Information

FOR PRICING CONTACT: Mike Webb mike.webb@interface.com or your local Account Executive.

FOR ORDER ENTRY / SHIPPING CONTACT: Customer Service 1.800.634.6032 CustomerSuccess-Hospitality@interface.com



Guestroom Products	Marriott Spec. #	Kit #	Color #	Size	Installation
*LVT Option - Textured Woodgrains	313007		A00406 Antique Light Oak	25cm x 1 m	Ashlar
*LVT Option - Textured Woodgrains	313008		A00409 Ash Walnut	25cm x 1 m	Ashlar
ACC King Plum Area Rug Kit	313124	98-1110-42	189102	8'-6" x 12'-0"	Ashlar
King Plum Area Rug Kit	313126	98-1110-42	189102	8'-0" x 10'-8"	Ashlar

Installation Specifications	Marriott Spec.#	Description
XL2000 PLUS Adhesive		Double stick install
Selitbloc LVT Underlayment	276822	Underlayment for entire room with carpet and LVT system

* Select from either LVT listed above. Antique Light Oak is pictured.

**Pad not required with carpet tile but acoustical underlayment is required with the LVT and carpet tile system

Queen Mint Guestroom Prototype Order Information

FOR PRICING CONTACT: Mike Webb mike.webb@interface.com or your local Account Executive.

FOR ORDER ENTRY / SHIPPING CONTACT: Customer Service 1.800.634.6032 CustomerSuccess-Hospitality@interface.com



Guestroom Products	Marriott Spec. #	Kit #	Color #	Size	Installation
*LVT Option Textured Woodgrains	313007		A00406 Antique Light Oak	25cm x 1m	Ashlar
*LVT Option Textured Woodgrains	313008		A00409 Ash Walnut	25cm x 1m	Ashlar
Queen Mint Area Rug Kit	313129	98-1110-45	189105	8'-6" x 19'-0"	Ashlar

Installation Specifications	Marriott Spec.#	Description
XL2000 PLUS Adhesive		Double stick install
Selitbloc LVT Underlayment	276822	Underlayment for entire room with carpet and LVT system

* Select from either LVT listed above. Ash Walnut is pictured.

**Pad not required with carpet tile but acoustical underlayment is required with the LVT and carpet tile system

Queen Plum Guestroom Prototype Order Information

FOR PRICING CONTACT: Mike Webb mike.webb@interface.com or your local Account Executive.

FOR ORDER ENTRY / SHIPPING CONTACT: Customer Service 1.800.634.6032 CustomerSuccess-Hospitality@interface.com



Guestroom Products	Marriott Spec. #	Kit #	Color #	Size	Installation
*LVT Option Textured Woodgrains	313007		A00406 Antique Light Oak	25cm x 1m	Ashlar
*LVT Option Textured Woodgrains	313008		A00409 Ash Walnut	25cm x 1m	Ashlar
Queen Plum Area Rug Kit	313131	98-1110-44	189102	8'-6" x 19'-0"	Ashlar

Installation Specifications	Marriott Spec.#	Description
XL2000 PLUS Adhesive		Double stick install
Selitbloc LVT Underlayment	276822	Underlayment for entire room with carpet and LVT system

* Select from either LVT listed above. Ash Walnut is pictured.

**Pad not required with carpet tile but acoustical underlayment is required with the LVT and carpet tile system

Enliven Guestroom Prototype Order Information

FOR PRICING CONTACT: Mike Webb mike.webb@interface.com or your local Account Executive.

FOR ORDER ENTRY / SHIPPING CONTACT: Customer Service 1.888.228.6301 CustomerSuccess-Hospitality@interface.com



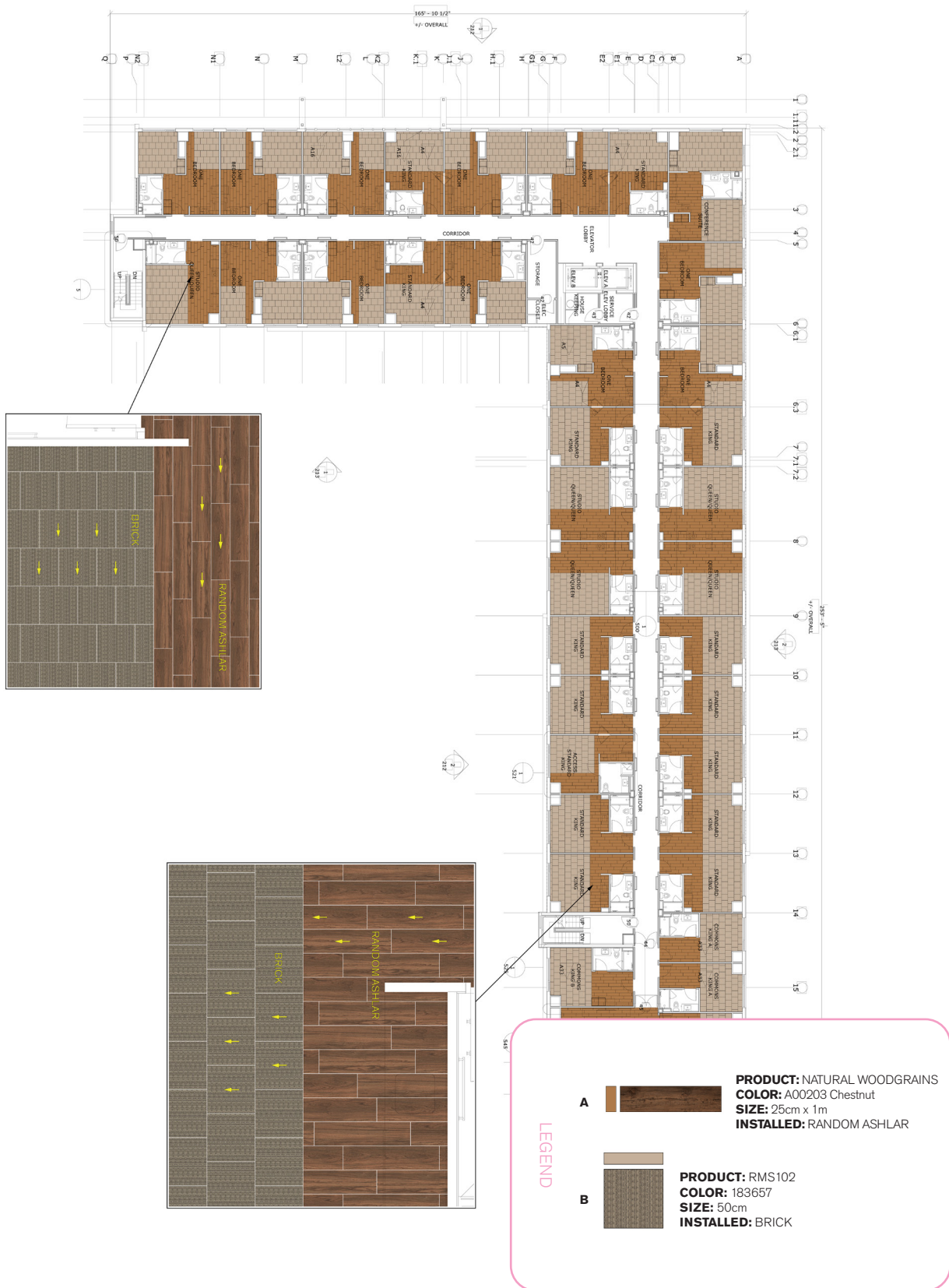
Guestroom Products	Marriott Spec. #	Sample # / Kit #	Color #	Size	Installation
Natural Woodgrain LVT A	277944		A00203 Chestnut	25cm x 1m	Random Ashlar
RMS102 B	274268	260688-038	183657	50cm x 50cm	Brick
Area Rug Kit	274269	98.1110.09	183657	6'-6 3/4" x 8'-2 3/8"	Brick
Area Rug Kit	274271	98.1110.10	183657	9'-10 1/8" x 11'-5 25/32"	Brick

Installation Specifications	Marriott Spec.#	Description
TacTiles for Installation (500 TacTiles/Roll)	250475	60sq yds/ Roll Adhesive
XL2000 PLUS Adhesive		Double stick install
Selitbloc LVT Underlayment	276822	Underlayment for entire room with carpet and LVT system


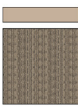
*Pad not required with carpet tile but acoustical underlayment is required with the LVT and carpet tile system

GUESTROOM INSTALLATION PLAN

All quantities are estimates only and are based on plans provided. Site measurements and field verifications are recommended to ensure accuracy. These quantities are not intended to be used for material ordering purposes. Since waste factors may vary by installer, actual ordering quantities are the responsibility of your flooring contractor.



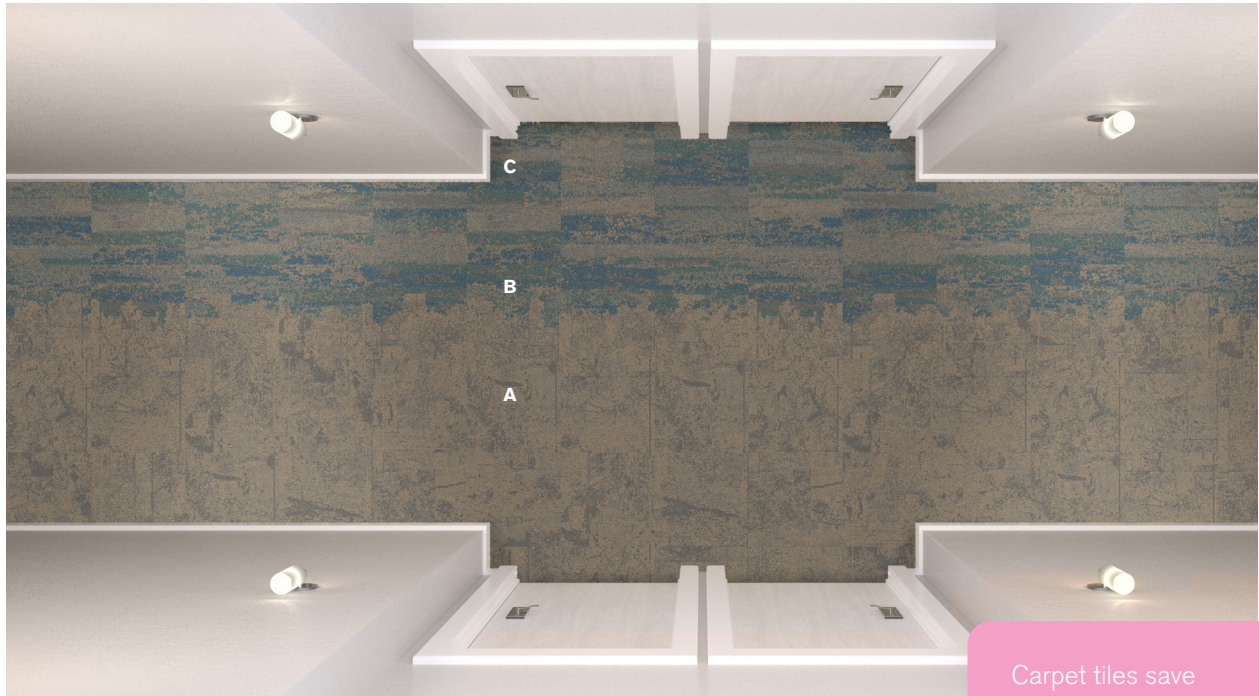
LEGEND

A		PRODUCT: NATURAL WOODGRAINS COLOR: A00203 Chestnut SIZE: 25cm x 1m INSTALLED: RANDOM ASHLAR
B		PRODUCT: RMS102 COLOR: 183657 SIZE: 50cm INSTALLED: BRICK

Enliven Corridor Prototype Order Information

FOR PRICING CONTACT: Mike Webb mike.webb@interface.com or your local Account Executive.

FOR ORDER ENTRY / SHIPPING CONTACT: Customer Service 1.888.228.6301 CustomerSuccess-Hospitality@interface.com



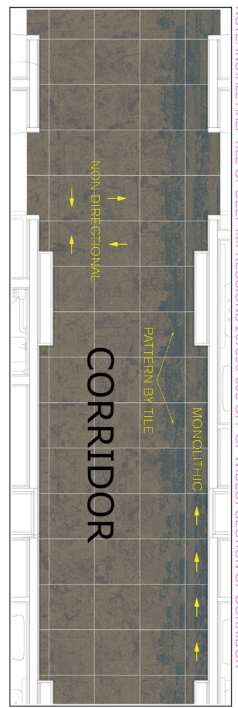
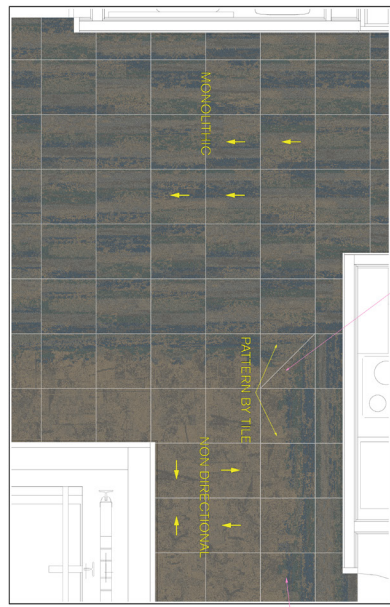
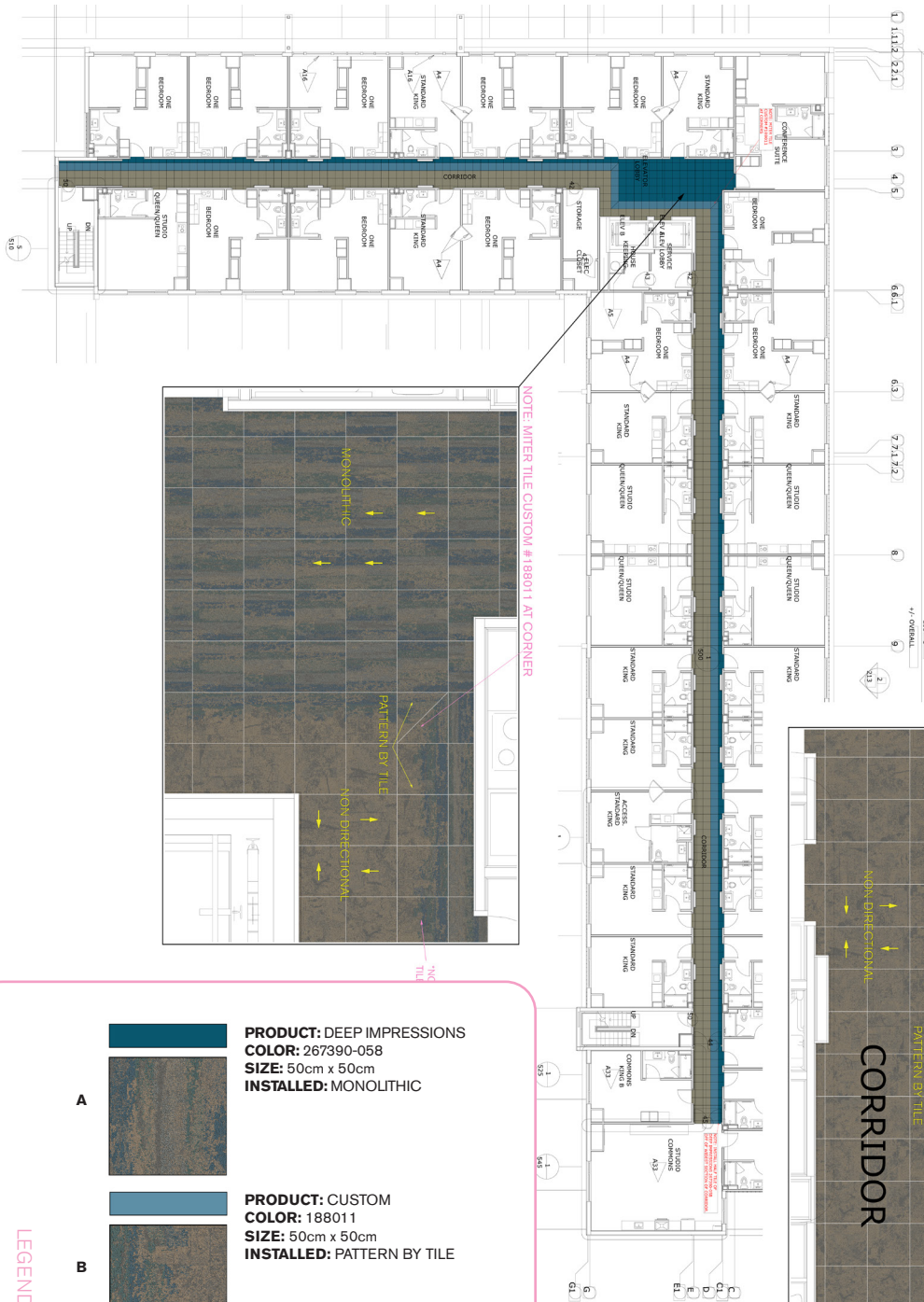
Carpet tiles save approximately 18-20% in product waste verses broadloom, based on prototype layout.
No Pad Required

Corridor Products	Marriott Spec. #	Sample #	Color #	Size	Installation
B603 A	296913	267390-055	to come	50cm x 50cm	Pattern By Tile
Custom B	297026	267390-059	188011	50cm x 50cm	Pattern By Tile
Deep Impressions C	297027	267390-058	to come	50cm x 50cm	Pattern By Tile

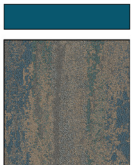
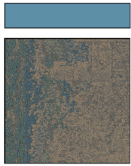

Installation Specifications	Marriott Spec.#	Description
TacTiles for Installation (500 TacTiles/Roll)	250475	125 sq yds/ Roll Adhesive
Pad / Underlayment	NOT REQUIRED	

CORRIDOR INSTALLATION PLAN

All quantities are estimates only and are based on plans provided. Site measurements and field verifications are recommended to ensure accuracy. These quantities are not intended to be used for material ordering purposes. Since waste factors may vary by installer, actual ordering quantities are the responsibility of your flooring contractor.



LEGEND

A		PRODUCT: DEEP IMPRESSIONS COLOR: 267390-058 SIZE: 50cm x 50cm INSTALLED: MONOLITHIC
B		PRODUCT: CUSTOM COLOR: 188011 SIZE: 50cm x 50cm INSTALLED: PATTERN BY TILE
C		PRODUCT: B603 COLOR: 267390-055 SIZE: 50cm x 50cm INSTALLED: NON DIRECTIONAL

Enliven Lounge Prototype Order Information

FOR PRICING CONTACT: Mike Webb mike.webb@interface.com or your local Account Executive.

FOR ORDER ENTRY / SHIPPING CONTACT: Customer Service 1.888.228.6301 CustomerSuccess-Hospitality@interface.com



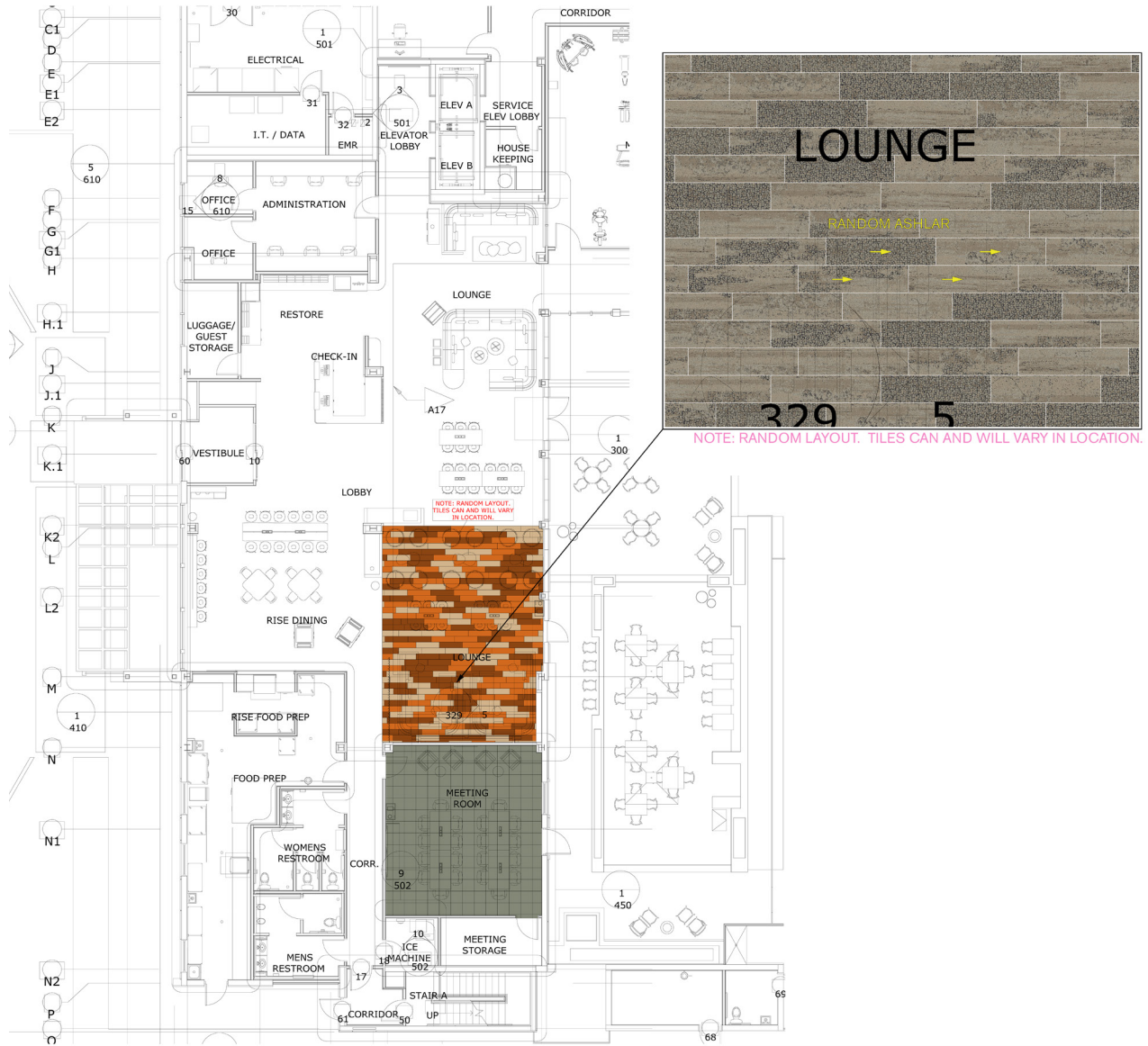
Lounge Products	Marriott Spec. #	Kit #	Color #	Size	Installation
HN840 A	278013		104226 Shale	25cm x 1m	Ashlar
HN850 B	278012		104210 Shale	25cm x 1m	Ashlar
HN810 C	278008		104218 Shale	25cm x 1m	Ashlar
Studio Commons (Area Rug Kit)	286295	98.1110.13	183657	*12'-6 x 8'-6	Brick

Installation Specifications	Marriott Spec.#	Description
TacTiles for Installation (500 TacTiles/Roll)	250475	60sq yds/ Roll Adhesive
Pad / Underlayment	NOT REQUIRED	

* Rug to be cut to fit onsite

LOUNGE INSTALLATION PLAN

All quantities are estimates only and are based on plans provided. Site measurements and field verifications are recommended to ensure accuracy. These quantities are not intended to be used for material ordering purposes. Since waste factors may vary by installer, actual ordering quantities are the responsibility of your flooring contractor.



LEGEND

A		PRODUCT: HN810 COLOR: 104218 SHALE SIZE: 25cm x 1m INSTALLED: RANDOM ASHLAR
B		PRODUCT: HN850 COLOR: 104210 SHALE SIZE: 25cm x 1m INSTALLED: RANDOM ASHLAR
C		PRODUCT: HN840 COLOR: 104226 SHALE SIZE: 25cm x 1m INSTALLED: RANDOM ASHLAR

Enliven Meeting Room and Admin Offices Prototype Order Information

FOR PRICING CONTACT: Mike Webb mike.webb@interface.com or your local Account Executive.

FOR ORDER ENTRY / SHIPPING CONTACT: Customer Service 1.888.228.6301 CustomerSuccess-Hospitality@interface.com

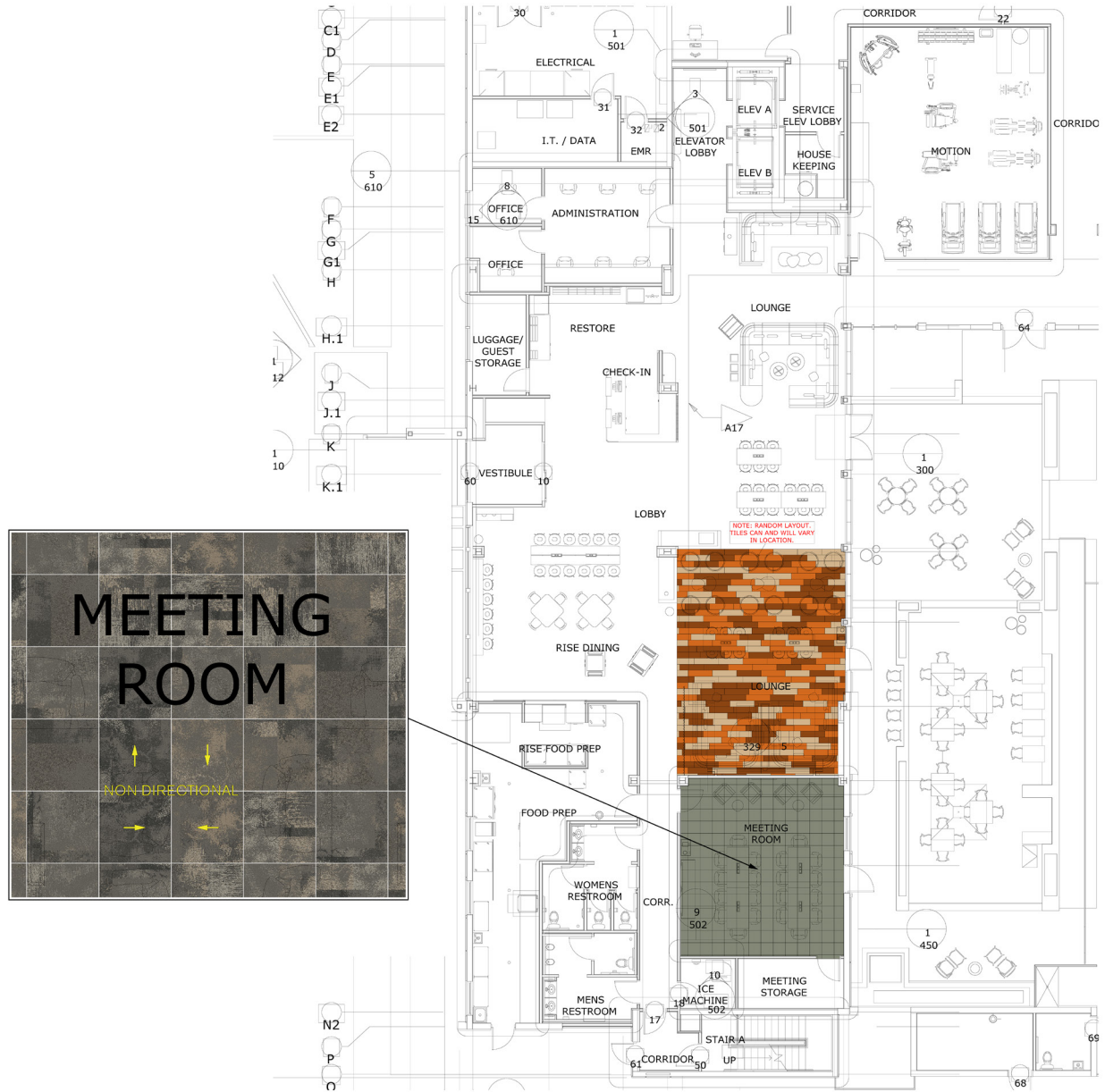


Meeting Room Product	Marriott Spec. #	Color #	Size	Installation
Raw A	278014	101054 Urban	50cm x 50cm	Non Directional

Installation Specifications	Marriott Spec.#	Description
TacTiles for Installation (500 TacTiles/Roll)	250475	125sq yds/ Roll Adhesive
Pad / Underlayment	NOT REQUIRED	

MEETING ROOM INSTALLATION PLAN

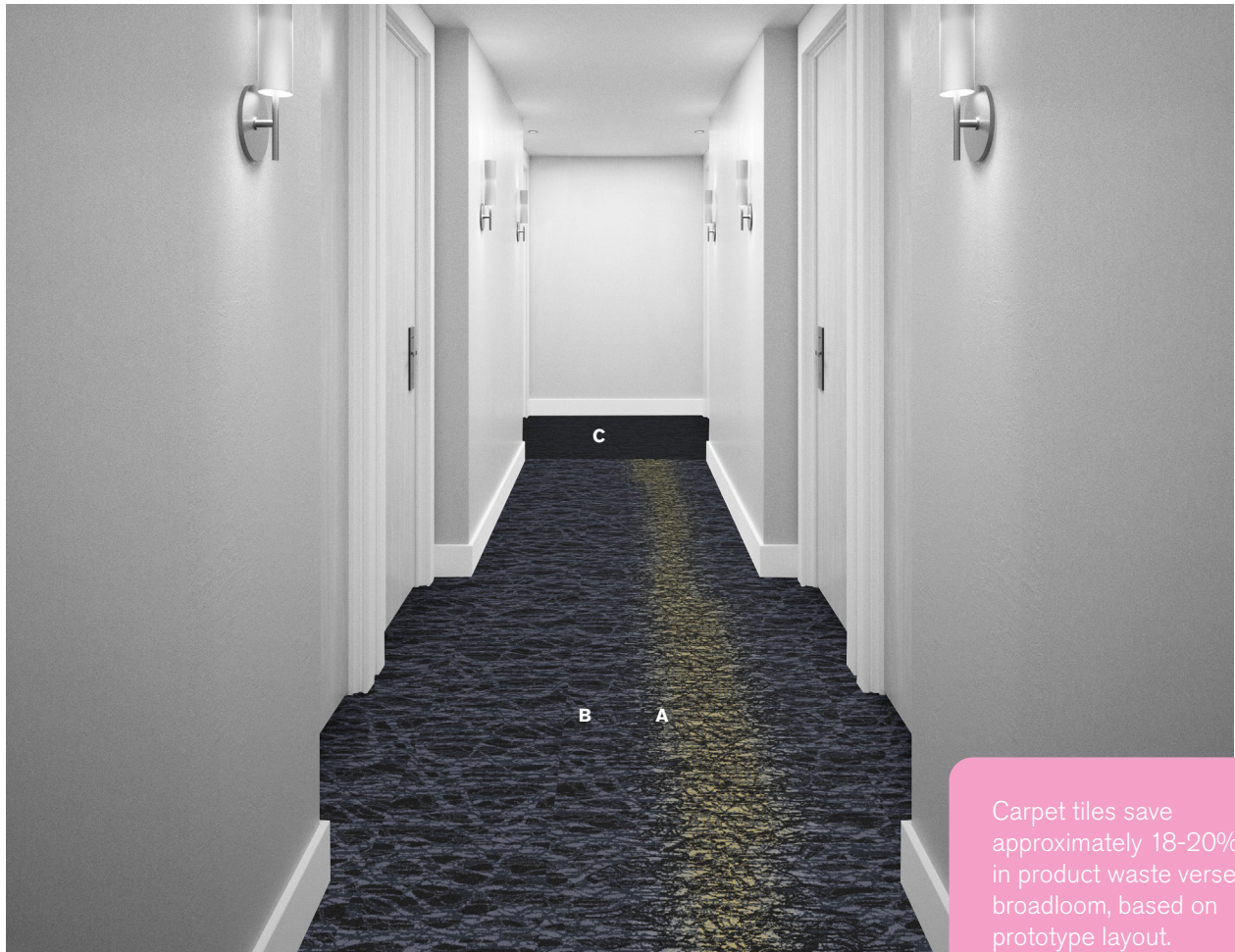
All quantities are estimates only and are based on plans provided. Site measurements and field verifications are recommended to ensure accuracy. These quantities are not intended to be used for material ordering purposes. Since waste factors may vary by installer, actual ordering quantities are the responsibility of your flooring contractor.



Modern Calm Prototype Order Information

FOR PRICING CONTACT: Mike Webb mike.webb@interface.com or your local Account Executive.

FOR ORDER ENTRY / SHIPPING CONTACT: Customer Service 1.888.228.6301 CustomerSuccess-Hospitality@interface.com



Carpet tiles save approximately 18-20% in product waste versus broadloom, based on prototype layout.
No Pad Required

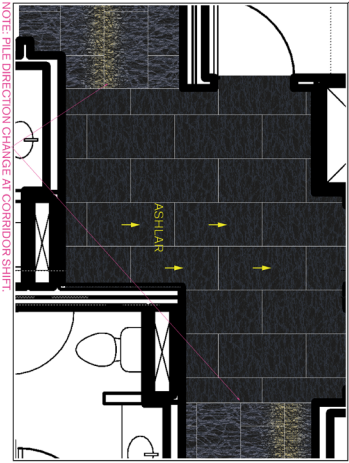
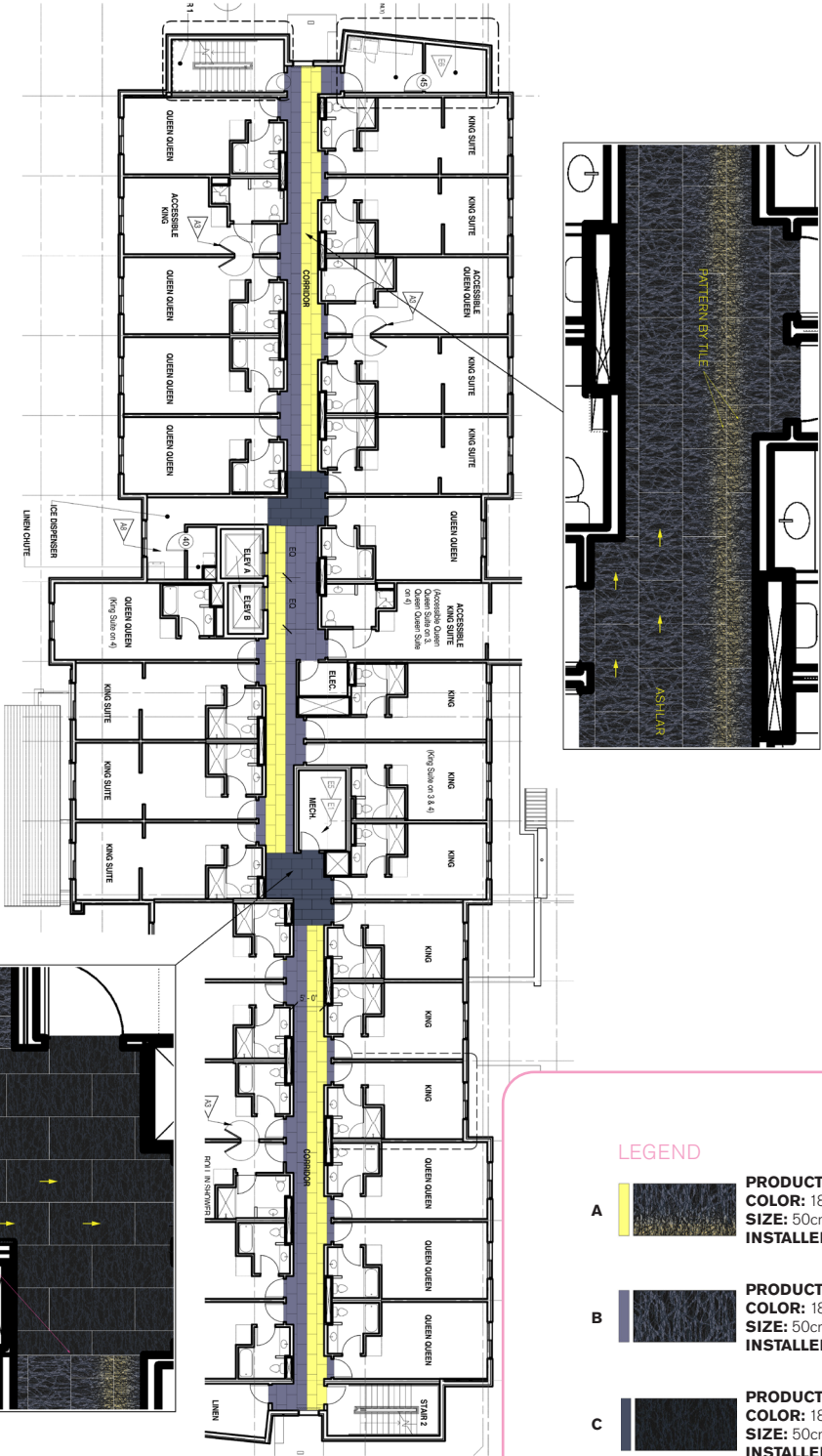
Corridor Products	Marriott Spec.#	Sample #	Color #	Size
Custom Pattern A	277373	265389-044	186560	50cm x 1m
Custom Pattern B	277371	265389-002	186559	50cm x 1m
Custom Pattern C	277374	265389-007	186558	50cm x 1m
Monochrome 4" Base	277370	265389-051	186561	4" x 25' Rolls

Installation Specifications	Spec. #	Description
TacTiles for Installation (500 TacTiles/Roll)	250475	60sq yds/ Roll Adhesive
Pad /Underlayment	NOT REQUIRED	Public Spaces

CORRIDOR INSTALLATION PLAN

All quantities are estimates only and are based on plans provided. Site measurements and field verifications are recommended to ensure accuracy. These quantities are not intended to be used for material ordering purposes. Since waste factors may vary by installer, actual ordering quantities are the responsibility of your flooring contractor.

Typical Prototype Layout



NOTE: TILE DIRECTION CHANGE AT CORRIDOR SHIFT

LEGEND

- A**

PRODUCT: CUSTOM
COLOR: 186560
SIZE: 50cm x 1m
INSTALLED: PATTERN BY TILE
- B**

PRODUCT: CUSTOM
COLOR: 186559
SIZE: 50cm x 1m
INSTALLED: ASHLAR
- C**

PRODUCT: CUSTOM
COLOR: 186558
SIZE: 50cm x 1m
INSTALLED: ASHLAR
- 
PRODUCT: MONOCHROME
COLOR: 186561
SIZE: 4" CARPET BASE

Corridor Prototype Order Information

FOR PRICING CONTACT: Mike Webb mike.webb@interface.com or your local Account Executive.

FOR ORDER ENTRY / SHIPPING CONTACT: Customer Service 1.888.228.6301 CustomerSuccess-Hospitality@interface.com



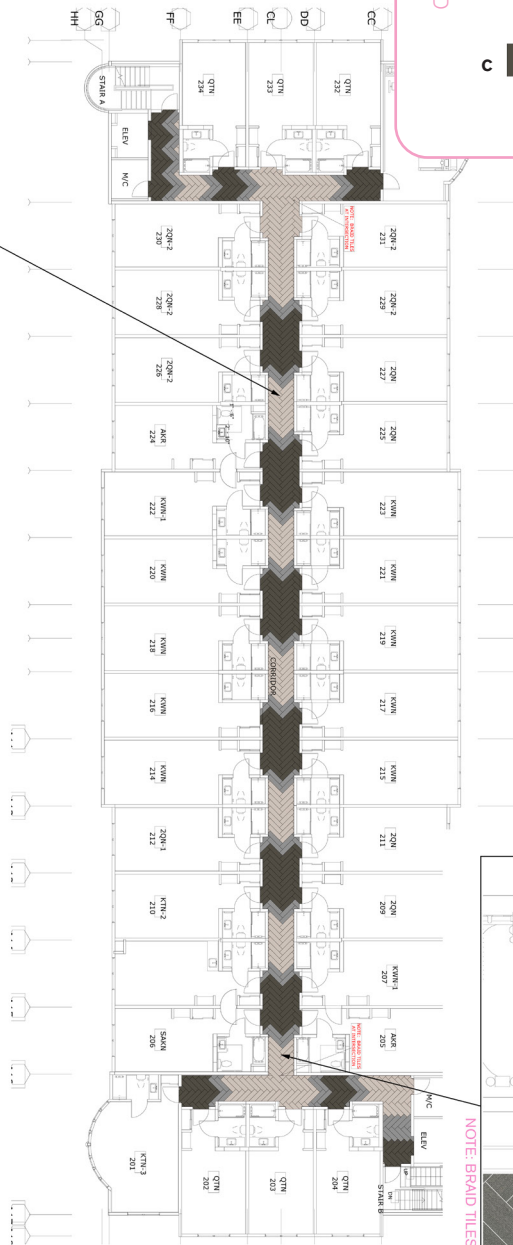
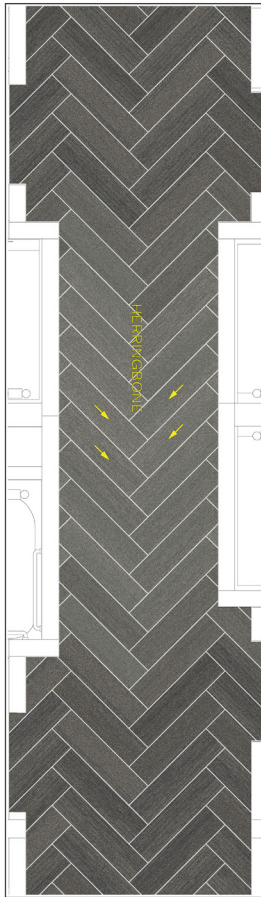
Carpet tiles save approximately 18-20% in product waste verses broadloom, based on prototype layout.
No Pad Required

Corridor Products	Marriott Spec. #	Color #	Size	Installation
Harmonize A	275327	104041 Iceberg	25cm x 1m	Herringbone
Harmonize B	283445	104044 Pewter	25cm x 1m	Herringbone
Harmonize C	283444	104043 Gravel	25cm x 1m	Herringbone




Installation Specifications	Marriott Spec.#	Description
TacTiles for Installation (500 TacTiles/Roll)	250475	60sq yds/ Roll Adhesive
Pad / Underlayment	NOT REQUIRED	

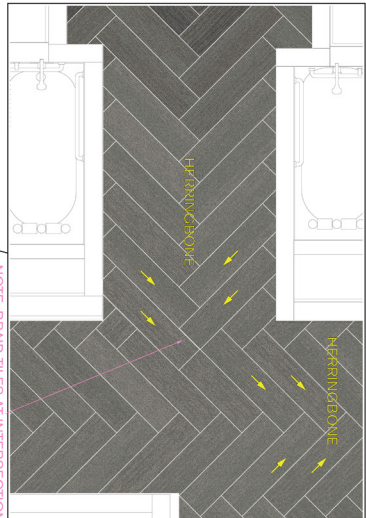
CORRIDOR INSTALLATION PLAN

All quantities are estimates only and are based on plans provided. Site measurements and field verifications are recommended to ensure accuracy. These quantities are not intended to be used for material ordering purposes. Since waste factors may vary by installer, actual ordering quantities are the responsibility of your flooring contractor.



LEGEND

- A**  **PRODUCT:** HARMONIZE
COLOR: 104041 ICEBERG
SIZE: 25cm x 1m
INSTALLED: HERRINGBONE
- B**  **PRODUCT:** HARMONIZE
COLOR: 104044 PEWTER
SIZE: 25cm x 1m
INSTALLED: HERRINGBONE
- C**  **PRODUCT:** HARMONIZE
COLOR: 104043 GRAVEL
SIZE: 25cm x 1m
INSTALLED: HERRINGBONE



Guestroom Prototype Order Information

FOR PRICING CONTACT: Mike Webb mike.webb@interface.com or your local Account Executive.

FOR ORDER ENTRY / SHIPPING CONTACT: Customer Service 1.888.228.6301 CustomerSuccess-Hospitality@interface.com



Guestroom Products	Marriott Spec. #	Kit #	Color #	Size	Installation
Natural Woodgrains LVT A	283403		A00212 Cedar	25cm x 1m	Random Ashlar
Asteria B	274963	263115-037	186254	50cm x 50cm	Non Directional
Guestroom Area Rug Kit	284388	98.1110.10	186254	9'-10.1" x 8'-2.4"	
ADA Guestroom Area Rug Kit	284389	98.1110.12	186254	14'-9.2" x 8'-2.4"	
Guestroom Area Rug Kit	284390	98.1110.12	186254	14'-9.2" x 8'-2.4"	

Installation Specifications	Marriott Spec.#	Description
TacTiles for Installation (500 TacTiles/Roll)	250475	60sq yds/ Roll Adhesive
XL2000 PLUS Adhesive		Double stick install
Selitbloc LVT Underlayment	276822	Underlayment for entire room with carpet and LVT system

*Pad not required with carpet tile but acoustical underlayment is required with the LVT and carpet tile system

GUESTROOM INSTALLATION PLAN

Interface Hospitality

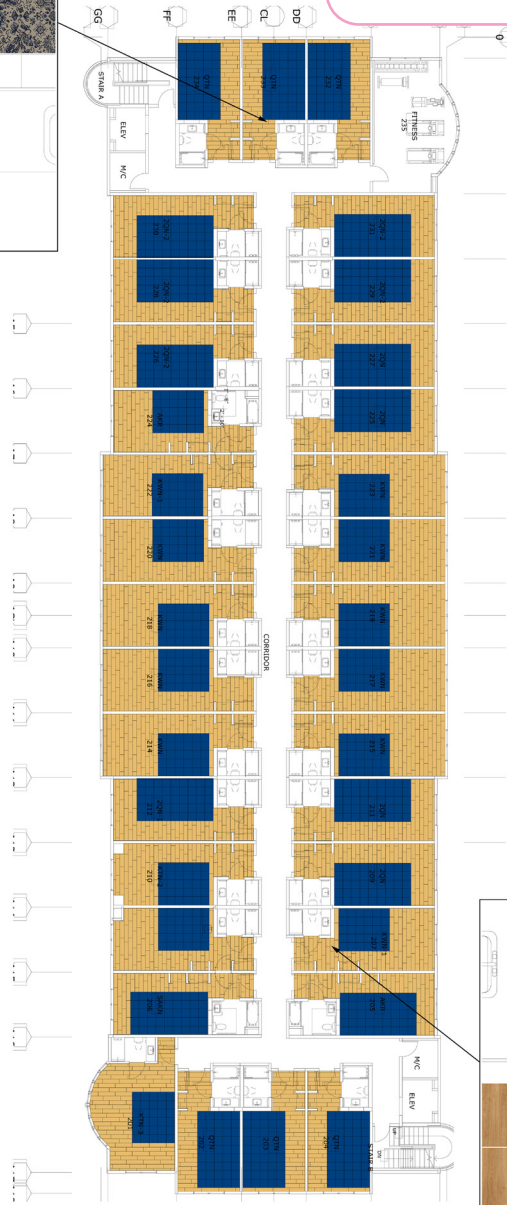
All quantities are estimates only and are based on plans provided. Site measurements and field verifications are recommended to ensure accuracy. These quantities are not intended to be used for material ordering purposes. Since waste factors may vary by installer, actual ordering quantities are the responsibility of your flooring contractor.



LEGEND

A  **PRODUCT:** NATURAL WOODGRAINS
COLOR: A00212 CEDAR
SIZE: 25cm x 1m
INSTALLED: RANDOM ASHLAR

B  **PRODUCT:** ASTERIA
COLOR: 186254
SIZE: 50cm
INSTALLED: NON DIRECTIONAL



MC 2 Guestroom and Bathroom Schemes

FOR PRICING CONTACT: Mike Webb mike.webb@interface.com or your local Account Executive.

FOR ORDER ENTRY / SHIPPING CONTACT: Customer Service 1.888.228.6301 CustomerSuccess-Hospitality@interface.com



Corridor Products	Marriott Spec. #	Color #	Size	Installation
LVT Textured Woodgrains A	298920	A00416 Antique Dark Oak	25cm x 1m	Random Ashlar
LVT Natural Woodgrains B	309649	A00202 Madagascar	25cm x 1m	Random Ashlar
LVT Textured Woodgrains C	309673	A00407 White Wash	25cm x 1m	Random Ashlar
LVT Natural Woodgrains D	309672	A00211 Washed Maple	25cm x 1m	Random Ashlar

Installation Specifications	Marriott Spec.#	Description
XL2000 PLUS Adhesive		Double stick install with seam sealer in wet locations
Selitbloc LVT Underlayment	276822	Underlayment for entire room with carpet and LVT system

*Acoustical underlayment is required with the LVT

GUESTROOM INSTALLATION PLAN

All quantities are estimates only and are based on plans provided. Site measurements and field verifications are recommended to ensure accuracy. These quantities are not intended to be used for material ordering purposes. Since waste factors may vary by installer, actual ordering quantities are the responsibility of your flooring contractor.



NOTE: For installation in bathrooms or wet areas, apply a bead of silicone caulking around perimeter seams and plumbing fixtures where the LVT plank/tile terminates

LEGEND


- A**




PRODUCT: TEXTURED WOODGRAINS
COLOR: A00416 ANTIQUE OAK
SIZE: 25cm x 1m
INSTALLED: RANDOM ASHLAR
- B**



PRODUCT: NATURAL WOODGRAINS
COLOR: A00202 MADAGASCAR
SIZE: 25cm x 1m
INSTALLED: RANDOM ASHLAR
- C**



PRODUCT: NATURAL WOODGRAINS
COLOR: A00211 WASHED MAPLE
SIZE: 25cm x 1m
INSTALLED: RANDOM ASHLAR
- D**



PRODUCT: TEXTURED WOODGRAINS
COLOR: A00407 WHITE WASH
SIZE: 25cm x 1m
INSTALLED: RANDOM ASHLAR

Neuhaus – Honed & Weave Prototype Order Information

FOR PRICING CONTACT: Mike Webb mike.webb@interface.com or your local Account Executive.

FOR ORDER ENTRY / SHIPPING CONTACT: Customer Service 1.888.228.6301 CustomerSuccess-Hospitality@interface.com



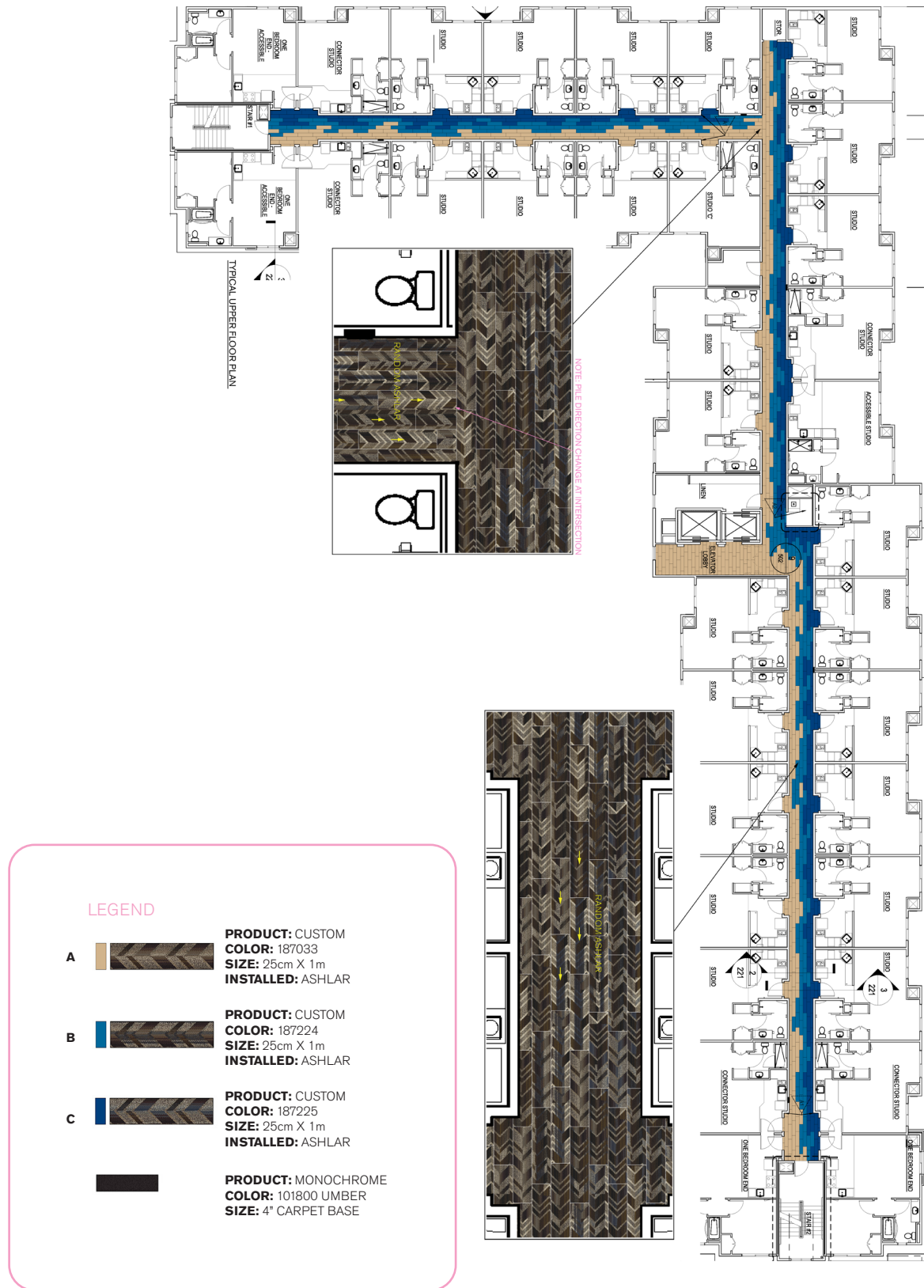
Carpet tiles save approximately 18-20% in product waste verses broadloom, based on prototype layout.
No Pad Required

Corridor Products	Marriott Spec. #	Sample #	Color #	Size	Installation
Custom A Cut Above A	281762	256387-182	187033	25cm x 1m	Random Ashlar
Custom A Cut Above B	290142	256387-193	187224	25cm x 1m	Random Ashlar
Custom A Cut Above C	290143	256387-195	187225	25cm x 1m	Random Ashlar
Monochrome 4" Base	281756	101800 Umber		4" x 25' Rolls	

Installation Specifications	Marriott Spec.#	Description
TacTiles for Installation (500 TacTiles/Roll)	250475	60sq yds/ Roll Adhesive
Pad / Underlayment	NOT REQUIRED	

CORRIDOR INSTALLATION PLAN

All quantities are estimates only and are based on plans provided. Site measurements and field verifications are recommended to ensure accuracy. These quantities are not intended to be used for material ordering purposes. Since waste factors may vary by installer, actual ordering quantities are the responsibility of your flooring contractor.



Prototype Order Information

FOR PRICING CONTACT: Mike Webb mike.webb@interface.com or your local Account Executive.

FOR ORDER ENTRY / SHIPPING CONTACT: Customer Service 1.888.228.6301 CustomerSuccess-Hospitality@interface.com

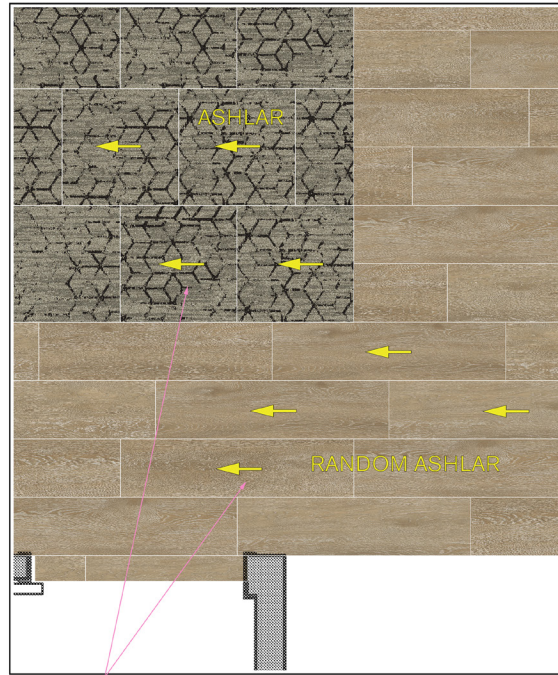


Guestroom Products	Marriott Spec. #	Kit #	Color #	Size	Installation
Custom 267506-071	301009		188074	50cm x 50cm	Ashlar
Area Rug Kit	301015	98.1110.34	188074	13'-1.5 x 5'-9"	Ashlar
Textured Woodgrains			A00406 Antique Light Oak	25cm x 1m	Ashlar

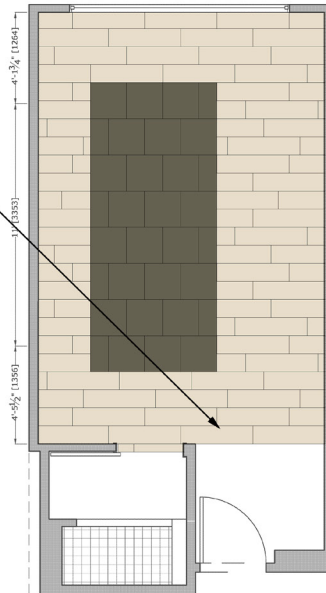
Installation Specifications	Marriott Spec.#	Description
XL2000 PLUS Adhesive		Double stick install
Selitbloc LVT Underlayment	276822	Underlayment for entire room with carpet and LVT system

*Pad not required with carpet tile but acoustical underlayment is required with the LVT and carpet tile system

All quantities are estimates only and are based on plans provided. Site measurements and field verifications are recommended to ensure accuracy. These quantities are not intended to be used for material ordering purposes. Since waste factors may vary by installer, actual ordering quantities are the responsibility of your flooring contractor.




NOTE: PILE DIRECTION



4 FINISH PLAN
SCALE: AS NOTED

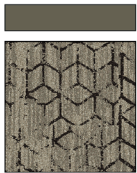
LEGEND

A



PRODUCT: TEXTURED WOODGRAINS
COLOR: A00406 ANTIQUE LIGHT OAK
SIZE: 25cm x 1m
INSTALLED: RANDOM ASHLAR

B



PRODUCT: CUSTOM
COLOR: 188074
SIZE: 50cm
INSTALLED: ASHLAR

Prototype Order Information

FOR PRICING CONTACT: Mike Webb mike.webb@interface.com or your local Account Executive.

FOR ORDER ENTRY / SHIPPING CONTACT: Customer Service 1.888.228.6301 CustomerSuccess-Hospitality@interface.com



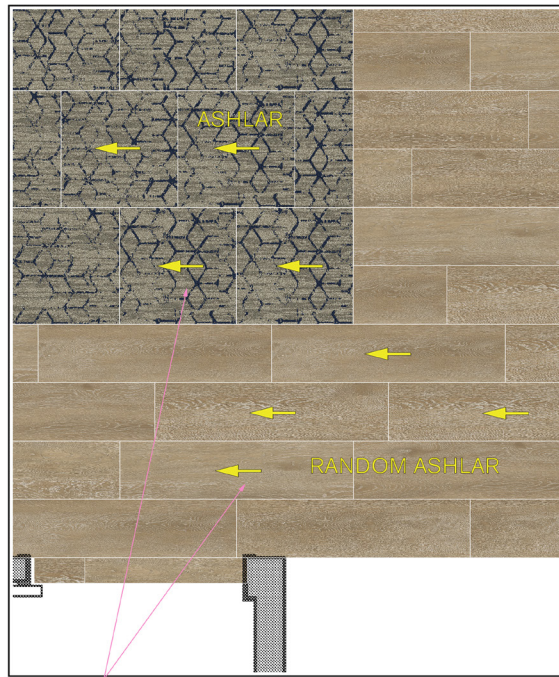
Guestroom Products	Marriott Spec. #	Kit #	Color #	Size	Installation
Custom 267506-094	301013		188329	50cm x 50cm	Ashlar
Area Rug Kit	301017	98.1110.35	188329	13'-1.5" x 5'-9"	Ashlar
Textured Woodgrains			A00406 Antique Light Oak	25cm x 1m	Ashlar

Installation Specifications	Marriott Spec.#	Description
XL2000 PLUS Adhesive		Double stick install
Selitbloc LVT Underlayment	276822	Underlayment for entire room with carpet and LVT system

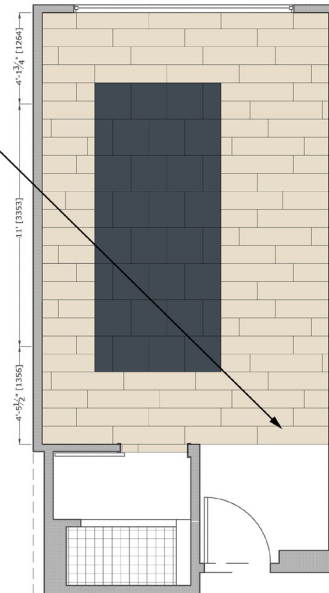
*Pad not required with carpet tile but acoustical underlayment is required with the LVT and carpet tile system

GUESTROOM INSTALLATION PLAN

All quantities are estimates only and are based on plans provided. Site measurements and field verifications are recommended to ensure accuracy. These quantities are not intended to be used for material ordering purposes. Since waste factors may vary by installer, actual ordering quantities are the responsibility of your flooring contractor.



NOTE: PILE DIRECTION



4 FINISH PLAN
SCALE: AS NOTED

LEGEND

PRODUCT: TEXTURED WOODGRAINS

COLOR: A00406 ANTIQUE LIGHT OAK

SIZE: 25cm x 1m

INSTALLED: RANDOM ASHLAR

PRODUCT: CUSTOM

COLOR: 188329

SIZE: 50cm

INSTALLED: ASHLAR

Timeless Comfort Prototype Order Information

FOR PRICING CONTACT: Mike Webb mike.webb@interface.com

FOR ORDER ENTRY / SHIPPING CONTACT: Customer Service 1.888.228.6301 CustomerSuccess-Hospitality@interface.com



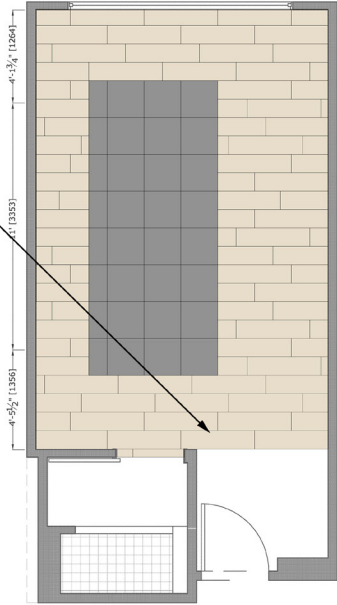
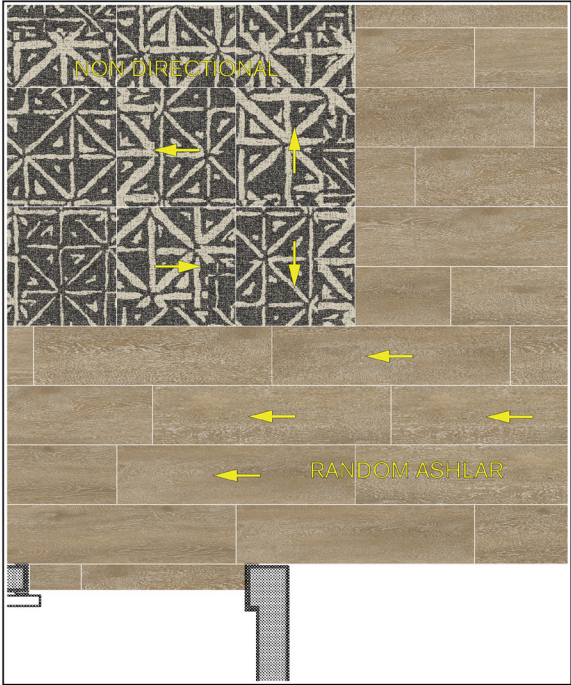
Guest Room Products	Marriott Spec. #	Kit #	Color #	Size	Installation
Yabara	308090		104972 Iron	50cm x 50cm	Non Directional
Area Rug Kit	308090	98.1110.41	104972 Iron	13'-1.5" x 5'-9"	Non Directional
Textured Woodgrains			A00406 Antique Light Oak	25cm x 1m	Ashlar

Installation Specifications	Marriott Spec. #	Description
XL2000 PLUS Adhesive		Double stick install
Selitbloc LVT Underlayment	276822	Underlayment for entire room with carpet and LVT system

*Pad not required with carpet tile but acoustical underlayment is required with the LVT and carpet tile system

GUESTROOM INSTALLATION PLAN

All quantities are estimates only and are based on plans provided. Site measurements and field verifications are recommended to ensure accuracy. These quantities are not intended to be used for material ordering purposes. Since waste factors may vary by installer, actual ordering quantities are the responsibility of your flooring contractor.



LEGEND

A

PRODUCT: TEXTURED WOODGRAINS
COLOR: A00406 ANTIQUE LIGHT OAK
SIZE: 25cm X 1m
INSTALLED: ASHLAR

B

PRODUCT: YABARA
COLOR: 104972 IRON
SIZE: 50cm
INSTALLED: ASHLAR

4 FINISH PLAN
 SCALE AS NOTED

Guestroom Prototype Order Information

FOR PRICING CONTACT: Mike Webb mike.webb@interface.com or your local Account Executive.

FOR ORDER ENTRY / SHIPPING CONTACT: Customer Service 1.888.228.6301 CustomerSuccess-Hospitality@interface.com

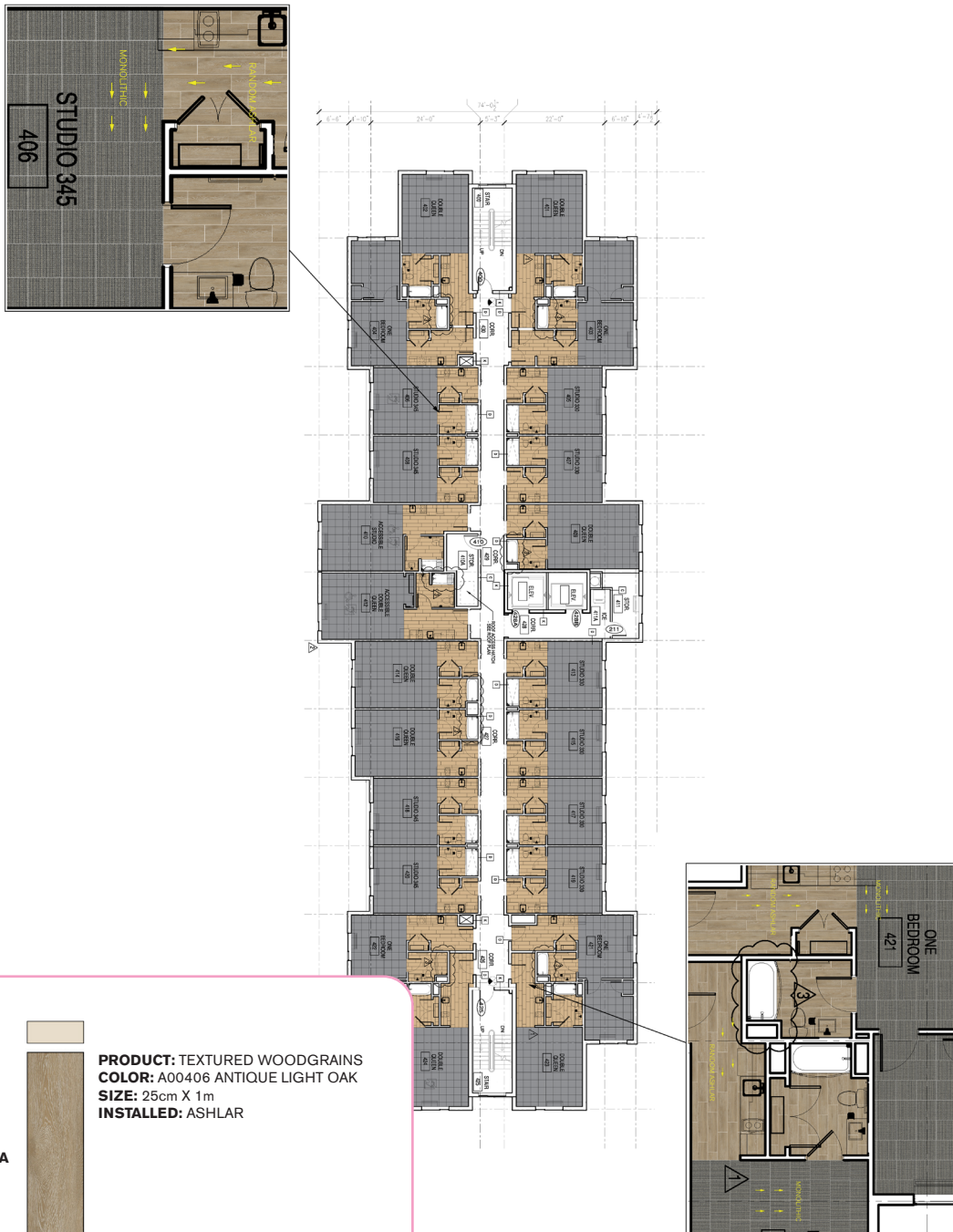


Entry, Kitchen, Bath, Guestroom Products	Marriott Spec. #	Color #	Size	Installation
Textured Woodgrains A		A00406 Antique Light Oak	25cm x 1m	Random Ashlar
Custom B	303769	188538	50cm x 50cm	Ashlar
Monochrome 4" Base	303773	101837 Granite		
Installation Specifications	Marriott Spec.#	Description		
TacTiles for Installation (500 TacTiles/Roll)	250475	60sq yds/Roll Adhesive		
XL2000 Plus Adhesive		Double stick install		
Selitbloc LVT Underlayment	276822	Underlayment for entire room with carpet and LVT system		



*Pad not required with carpet tile but acoustical underlayment is required with the LVT and carpet tile system

GUESTROOM INSTALLATION PLAN

All quantities are estimates only and are based on plans provided. Site measurements and field verifications are recommended to ensure accuracy. These quantities are not intended to be used for material ordering purposes. Since waste factors may vary by installer, actual ordering quantities are the responsibility of your flooring contractor.



LEGEND

A		<p>PRODUCT: TEXTURED WOODGRAINS COLOR: A00406 ANTIQUE LIGHT OAK SIZE: 25cm X 1m INSTALLED: ASHLAR</p>
B		<p>PRODUCT: CUSTOM COLOR: 188538 SIZE: 50cm INSTALLED: MONOLITHIC</p>