

Interface® Hospitality

ELEMENT

*Approved Prototypes*

---

Aloft Hotels  
Courtyard  
Delta Hotels  
Element  
Fairfield Inn & Suites  
Four Points  
Marriott Hotels  
Residence Inn  
Sheraton  
Towneplace Suites

## Why **Interface** Hospitality?

---

Interface Hospitality is a **Marriott International** approved supplier of carpet and LVT. We are currently approved on the following prototypes:

- Aloft Hotels
- Courtyard
- Delta Hotels
- Element
- Fairfield Inn & Suites
- Four Points
- Marriott Hotels
- Residence Inn
- Sheraton
- Towneplace Suites



1. **6-8 WEEK LEAD TIME** for anything not already in stock.
2. **NO ROLL SIZES OR WIDTHS** to deal with. We come in boxes!
3. What about **UNIT COST?** We can compare the real cost of tile vs. broadloom for each project and show you the true savings.
4. **15 YEAR WARRANTY.** Say no more.
5. **SELECTIVE REPLACEMENT** means little to no disruptions to hotel operations.
6. **INTERSEPT®** antimicrobial protection. Keepin' it clean.
7. **PROTEKT<sup>2</sup>** stain resistant technology. Keepin' it real clean!
8. Greater **EASE OF HANDLING**, less liability related to mis-cutting of broadloom.
9. Order and installation is a breeze with our **ESTIMATES, SEAMING DIAGRAMS, AND RENDERINGS.**
10. All of our yarns are **100% SOLUTION-DYED NYLON.**
11. **VARIOUS TILE SIZES** make it easier to design/define spaces and sub-spaces.
12. Our **CARPET** and **LVT** work together in seamless integration, with no transition strips.
13. We are **SUSTAINABLE:** All of our products are **EPD** verified.
14. Interface Hospitality's **RE-ENTRY RECYCLING** program results in our products having up to 80% recycled content, from returned/used carpet.
15. All Interface Hospitality carpet is climate neutral **COOL CARPET**, meaning no greenhouse gases!

# Why **Interface** Hospitality?

---

## 1. Lead Time

If not in stock, our lead times are 6-8 weeks and all products are manufactured in the USA. FOB Union City, Georgia.

## 2. No Roll Sizes or Widths

There are no widths and roll sizes to deal with, which can often lead to hidden costs and unused material.

## 3. Unit Cost

The unit cost is only part of the evaluation when comparing carpet tile to broadloom for your hotel. Waste is a big consideration with total project cost. We can develop project specific ROI's to compare total project cost for your individual property.

## 4. 15 Year Warranty

All Interface Hospitality products are hard wearing, provide lasting protection against excessive surface wear, edge ravel, backing separation, shrinking, stretching, permanent soiling and staining.

## 5. Selective Replacement

Whether you're replacing a single Guestroom, a corridor, or an entire hotel, you can do so without disruption. Interface Hospitality's selective replacement enables old flooring to be replaced quickly and efficiently any day of the week, your carpet replacement costs can be cut by up to 50%.

## 6. Intersept®

Mold Protection no matter what's spilled on the floor, our proprietary antimicrobial preservative, Intersept®, protects our modular carpet against the growth of odor-causing bacteria guaranteed. With proper maintenance, Intersept treated carpet safely and effectively inhibits the growth of mold and other bacteria so your floors are always fresh. All Interface carpet is standard with Intersept.

## 7. Protekt<sup>2</sup>

Because stain resist technology - Protekt<sup>2</sup> - is built into Interface carpet tiles, a topical stain resist treatment is not necessary. The additional polymer is included when nylon is manufactured so it permanently increases stain resistance. We conducted stain tests on our products and compared them to products with a topical treatment. The results? Our uncoated fibers performed just as well as the treated ones. Additionally, the fluorinated chemicals traditionally used in stain resist treatments, when they do wash off, persist in the environment for thousands of years. With Protekt<sup>2</sup>, you get permanent stain resistance, not permanent pollution.

## 8. Ease of Handling

Carpet tile offers greater ease of handling, and installers have less liability related to possible mis-cutting of broadloom.

## 9. Installation

Order and installation is a breeze with our estimates, seaming diagrams and renderings.

## 10. 100% Solution-dyed Nylon

Vibrant color that does not fade. All Interface Hospitality carpet tiles are made from durable, stain resistant, 100% solution dyed nylon. Offering superior color fastness and a wide array of colors and textures, solution dyed nylon is less harmful to the environment, using no water or toxic chemicals in the manufacturing process.

## 11. Various Sizes

Using, 50cm, 1m, 25cm x 1m and 50cm x 1m tiles allows for optimal pattern repeats, asymmetrical or symmetrical designs and color use. It also allows design to define spaces / nesting within larger areas.

## 12. Integrated System

Interface modular tiles span a wide selection of designs that offer pattern, color and texture options for a myriad of flooring needs. Tiles come in a variety of shape and size modules that work seamlessly and interchangeably with each other. This compatibility allows for holistic flooring solutions with expansive design flexibility.

## 13. Sustainable Choice

Environmental Responsibility. Interface Hospitality was the industry's first to earn an EPD (Environmental Product Declaration), which evaluates consistent factors based on full lifecycle assessment (LCA). We now have published EPDs for 99% of our products globally. In addition, all of our products with GlasBac®, and GlasBacRE backings meet NSF/ANSI 140 Sustainable Carpet Assessment Standard (SCAS) for carpet.

## 14. Carpet Recycling Program: ReEntry®

Recyclable is Now a Reality. Through our ReEntry program and partnerships with our fiber suppliers and recycling centers throughout North America, separated Type 6 and 6,6 nylon are recycled into new 6 and 6,6 nylon, while separated GlasBac® and similar competitor backings are recycled into GlasBac®RE non-virgin PVC backing using our Cool Blue™ technology. The result? Products with up to 80% total recycled content, including as much as 35% post-consumer content.

## 15. Cool Carpet™

Our third party verified carbon offset program zeroes out all greenhouse gas (GHG) emissions associated with the entire lifecycle of your carpet. An independent testing program that identifies carpet and adhesives with very low emissions of VOCs to help improve indoor air quality.

## 16. Dimensional Stability

Interface GlasBac® backing has been tested and proven in the marketplace for over 30 years. Engineered to provide superior dimensional stability, GlasBac® modular carpet tiles will not stretch or shrink when exposed to heat or cold, heavy foot or rolling traffic.

## 17. Sound Absorption

Quite space is essential when people need to focus and concentrate. Sound absorption is therefore critical when colleagues need to collaborate without becoming a distraction to their neighbors. Interface Hospitality carpets provide high sound absorption and insulation.

**Enliven Guestroom Prototype Order Information**

FOR PRICING CONTACT: Mike Webb [mike.webb@interface.com](mailto:mike.webb@interface.com) or your local Account Executive.

FOR ORDER ENTRY / SHIPPING CONTACT: Customer Service 1.800.634.6032



Guestroom Products	Marriott Spec. #	Sample # / Kit #	Color #	Size	Installation
Natural Woodgrain LVT <b>A</b>	277944		A00203 Chestnut	25cm x 1m	Random Ashlar
RMS102 <b>B</b>	274268	260688-038	183657	50cm x 50cm	Brick
Area Rug Kit	274269	98.1110.09	183657	6'-6 3/4" x 8'-2 3/8"	Brick
Area Rug Kit	274271	98.1110.10	183657	9'-10 1/8" x 11'-5 25/32"	Brick

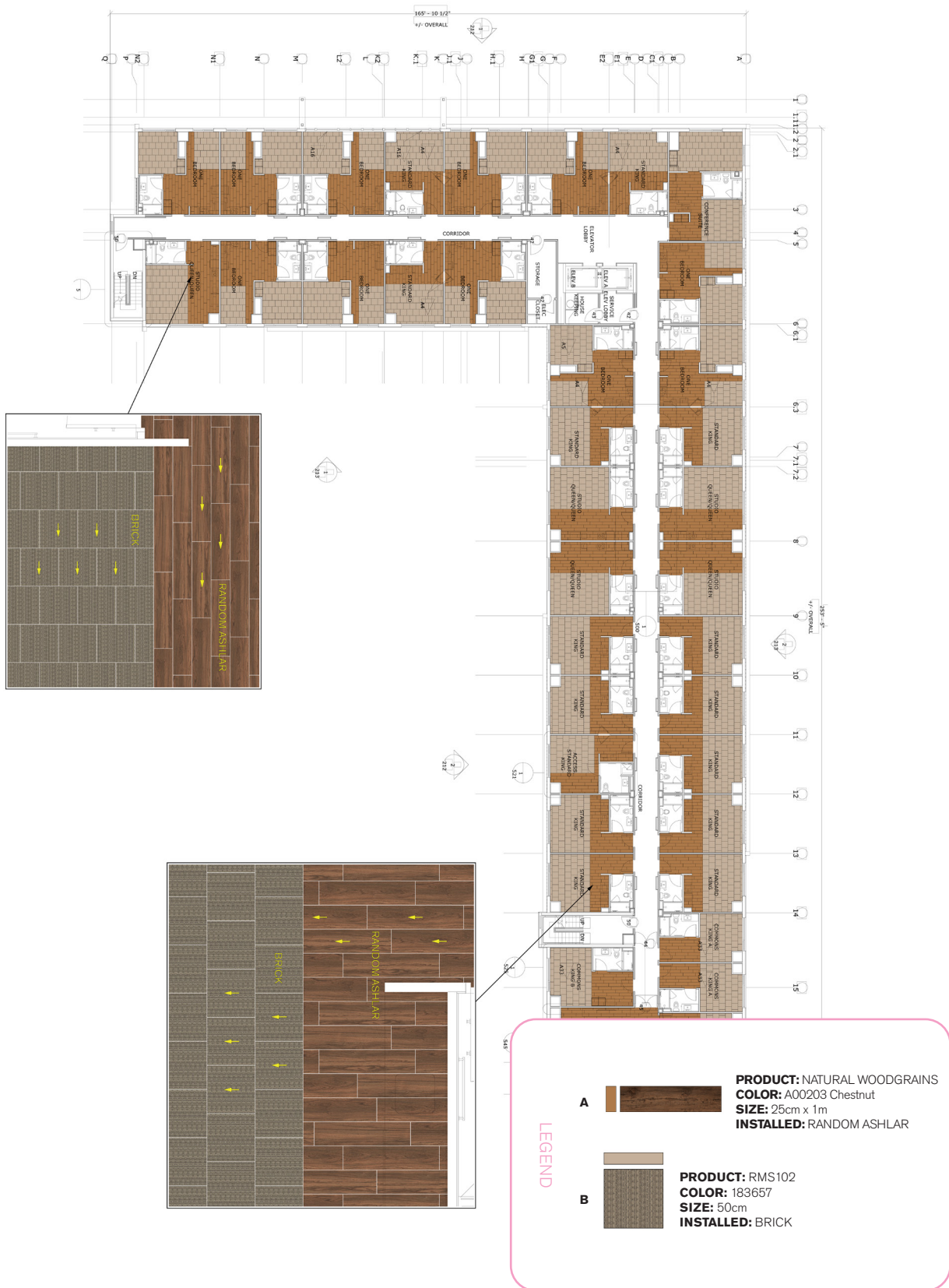
Installation Specifications	Marriott Spec.#	Description
TacTiles for Installation (500 TacTiles/Roll)	250475	60sq yds/ Roll Adhesive
XL2000 PLUS Adhesive		Double stick install
Selitbloc LVT Underlayment	276822	Underlayment for entire room with carpet and LVT system

\*Pad not required with carpet tile but acoustical underlayment is required with the LVT and carpet tile system



# GUESTROOM INSTALLATION PLAN

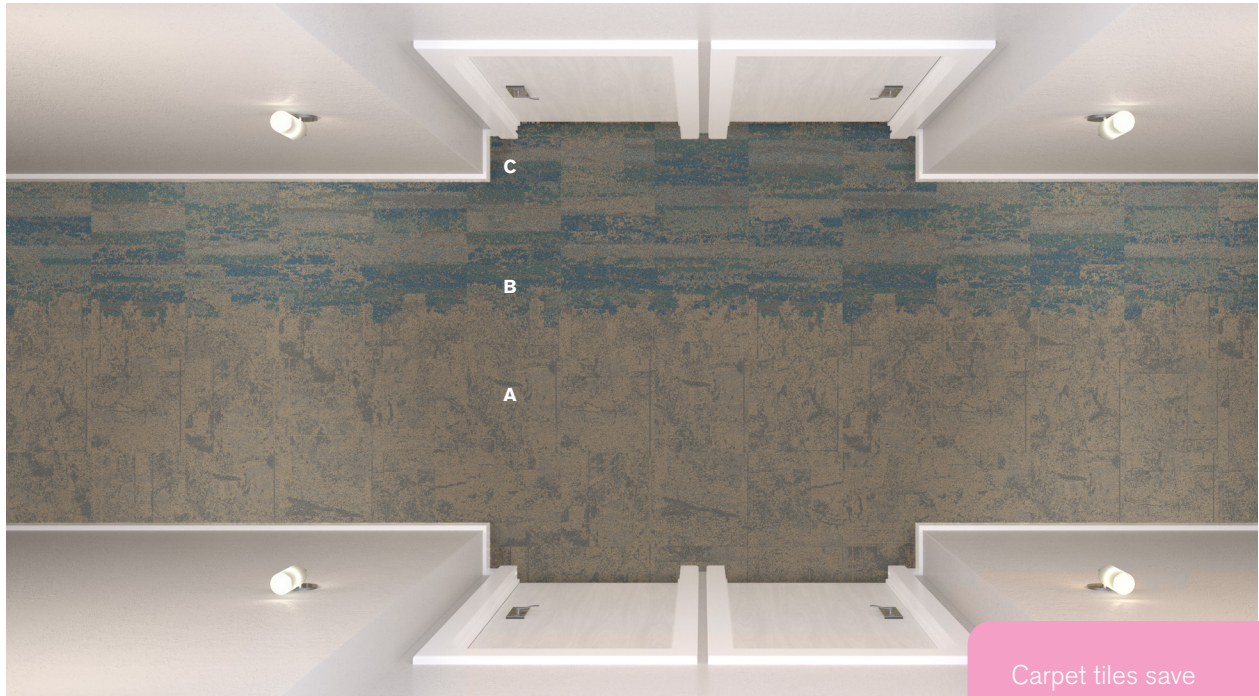
All quantities are estimates only and are based on plans provided. Site measurements and field verifications are recommended to ensure accuracy. These quantities are not intended to be used for material ordering purposes. Since waste factors may vary by installer, actual ordering quantities are the responsibility of your flooring contractor.



**Enliven Corridor Prototype Order Information**

FOR PRICING CONTACT: Mike Webb [mike.webb@interface.com](mailto:mike.webb@interface.com) or your local Account Executive.

FOR ORDER ENTRY / SHIPPING CONTACT: Customer Service 1.800.634.6032



Carpet tiles save approximately 18-20% in product waste verses broadloom, based on prototype layout.  
*No Pad Required*

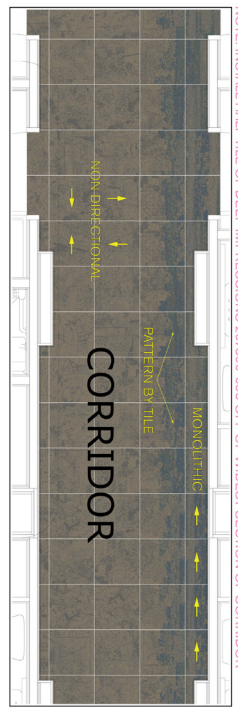
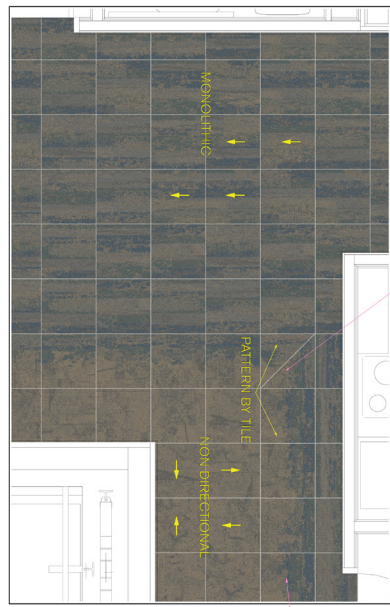
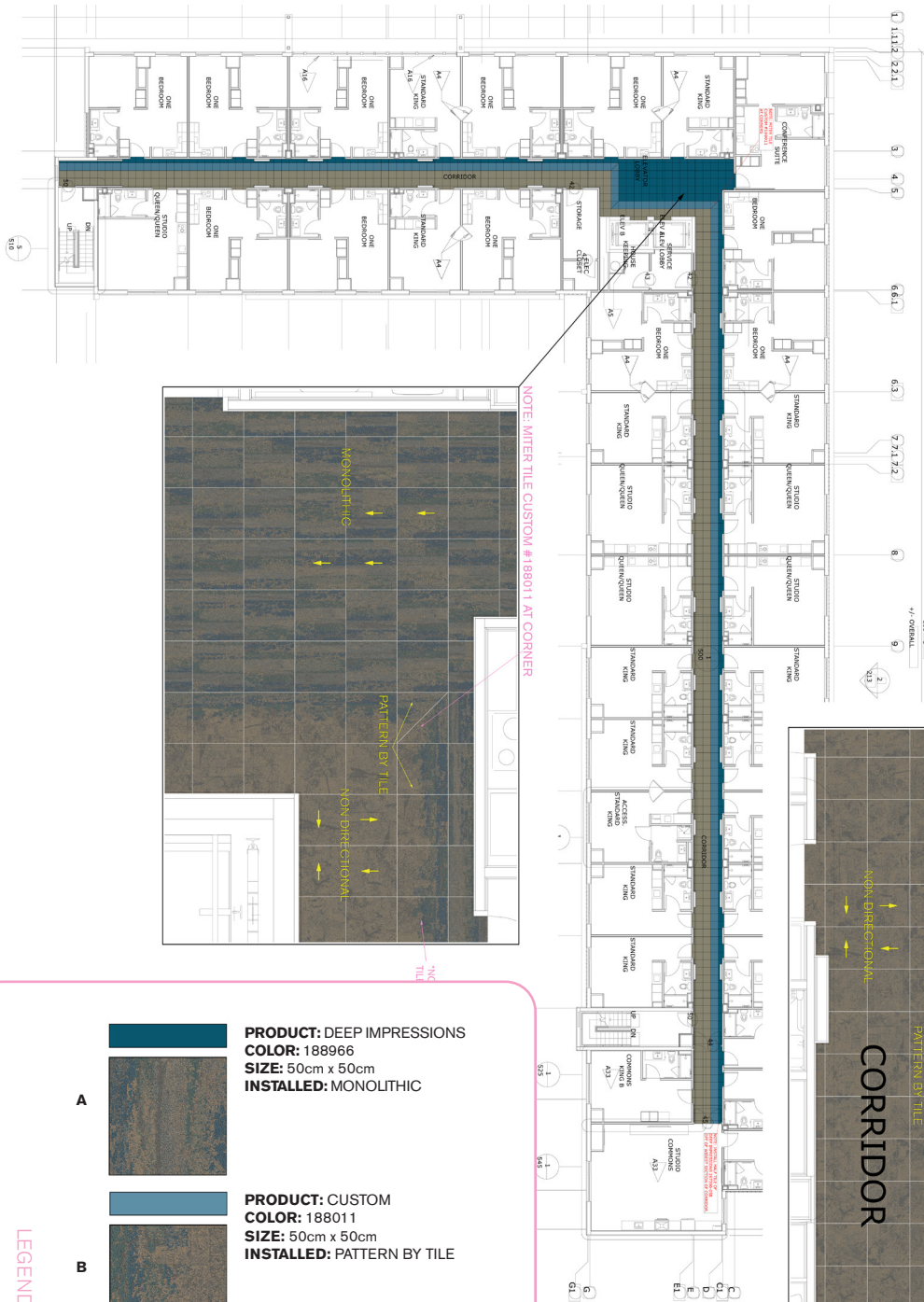
Corridor Products	Marriott Spec. #	Sample #	Color #	Size	Installation
B603 <b>A</b>	296913	267390-055	188965	50cm x 50cm	Pattern By Tile
Custom <b>B</b>	297026	267390-059	188011	50cm x 50cm	Pattern By Tile
Deep Impressions <b>C</b>	297027	267390-058	188966	50cm x 50cm	Pattern By Tile

Installation Specifications	Marriott Spec.#	Description
TacTiles for Installation (500 TacTiles/Roll)	250475	125 sq yds/ Roll Adhesive
<b>Pad / Underlayment</b>	<b>NOT REQUIRED</b>	

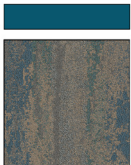
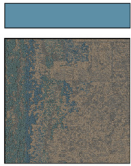

# CORRIDOR INSTALLATION PLAN

All quantities are estimates only and are based on plans provided. Site measurements and field verifications are recommended to ensure accuracy. These quantities are not intended to be used for material ordering purposes. Since waste factors may vary by installer, actual ordering quantities are the responsibility of your flooring contractor.



NOTE: INSTALL HALF TILE OF DEEP IMPRESSIONS 267290-0568 OFF OF WIDEST SECTION OF CORRIDOR

**LEGEND**

<b>A</b>		<b>PRODUCT:</b> DEEP IMPRESSIONS <b>COLOR:</b> 188966 <b>SIZE:</b> 50cm x 50cm <b>INSTALLED:</b> MONOLITHIC
<b>B</b>		<b>PRODUCT:</b> CUSTOM <b>COLOR:</b> 188011 <b>SIZE:</b> 50cm x 50cm <b>INSTALLED:</b> PATTERN BY TILE
<b>C</b>		<b>PRODUCT:</b> B603 <b>COLOR:</b> 188965 <b>SIZE:</b> 50cm x 50cm <b>INSTALLED:</b> NON DIRECTIONAL



**Enliven Lounge Prototype Order Information**

FOR PRICING CONTACT: Mike Webb [mike.webb@interface.com](mailto:mike.webb@interface.com) or your local Account Executive.

FOR ORDER ENTRY / SHIPPING CONTACT: Customer Service 1.800.634.6032



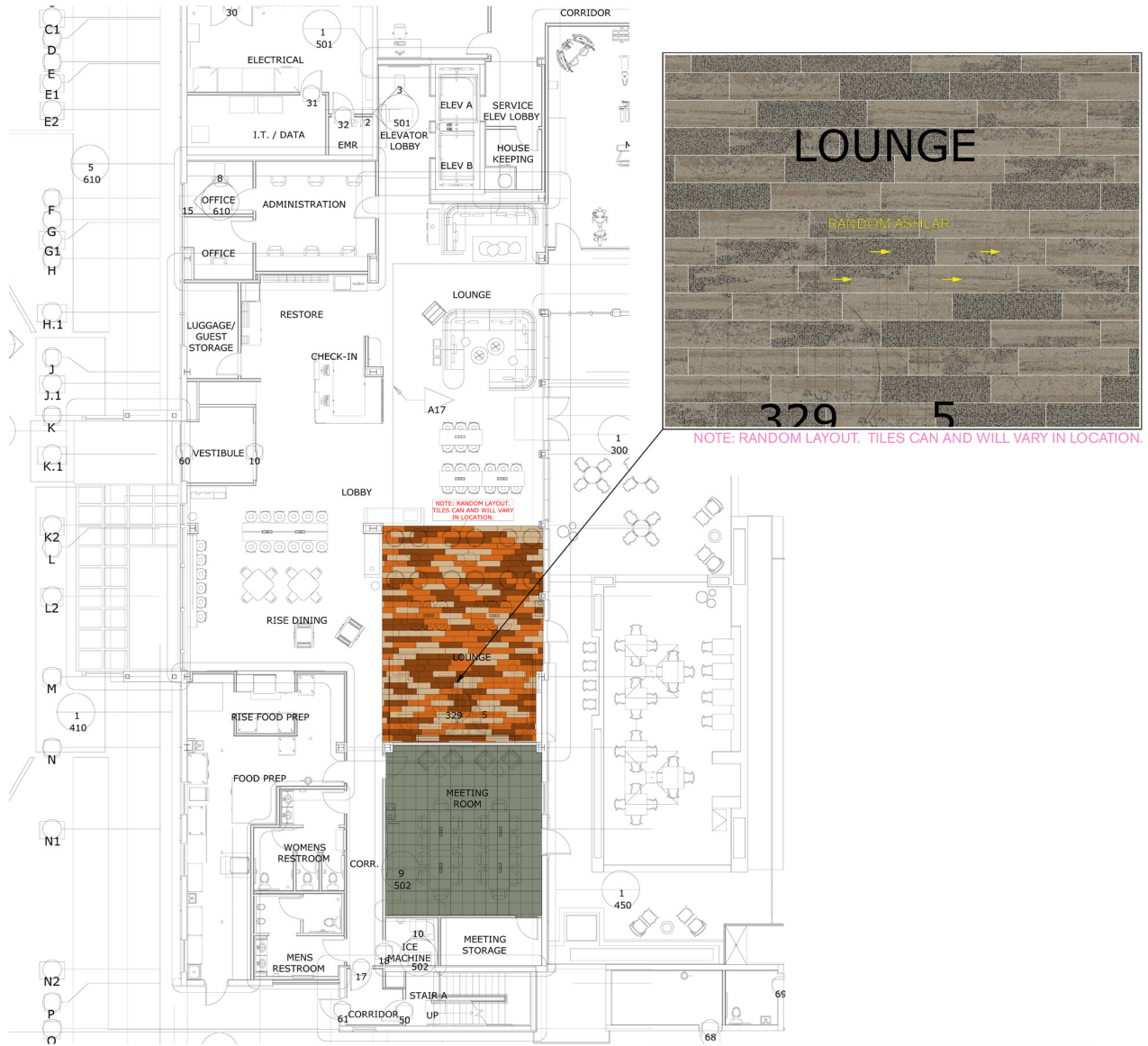
Lounge Products	Marriott Spec. #	Kit #	Color #	Size	Installation
HN840 <b>A</b>	278013		104226 Shale	25cm x 1m	Ashlar
HN850 <b>B</b>	278012		104210 Shale	25cm x 1m	Ashlar
HN810 <b>C</b>	278008		104218 Shale	25cm x 1m	Ashlar
Studio Commons (Area Rug Kit)	286295	98.1110.13	183657	*12'-6 x 8'-6	Brick

Installation Specifications	Marriott Spec.#	Description
TacTiles for Installation (500 TacTiles/Roll)	250475	60sq yds/ Roll Adhesive
<b>Pad / Underlayment</b>	<b>NOT REQUIRED</b>	

\* Rug to be cut to fit onsite

# LOUNGE INSTALLATION PLAN

All quantities are estimates only and are based on plans provided. Site measurements and field verifications are recommended to ensure accuracy. These quantities are not intended to be used for material ordering purposes. Since waste factors may vary by installer, actual ordering quantities are the responsibility of your flooring contractor.



NOTE: RANDOM LAYOUT. TILES CAN AND WILL VARY IN LOCATION.

**LEGEND**

<b>A</b>		<b>PRODUCT:</b> HN810 <b>COLOR:</b> 104218 SHALE <b>SIZE:</b> 25cm x 1m <b>INSTALLED:</b> RANDOM ASHLAR
<b>B</b>		<b>PRODUCT:</b> HN850 <b>COLOR:</b> 104210 SHALE <b>SIZE:</b> 25cm x 1m <b>INSTALLED:</b> RANDOM ASHLAR
<b>C</b>		<b>PRODUCT:</b> HN840 <b>COLOR:</b> 104226 SHALE <b>SIZE:</b> 25cm x 1m <b>INSTALLED:</b> RANDOM ASHLAR



**Enliven Meeting Room and Admin Offices Prototype Order Information**

FOR PRICING CONTACT: Mike Webb [mike.webb@interface.com](mailto:mike.webb@interface.com) or your local Account Executive.

FOR ORDER ENTRY / SHIPPING CONTACT: Customer Service 1.800.634.6032



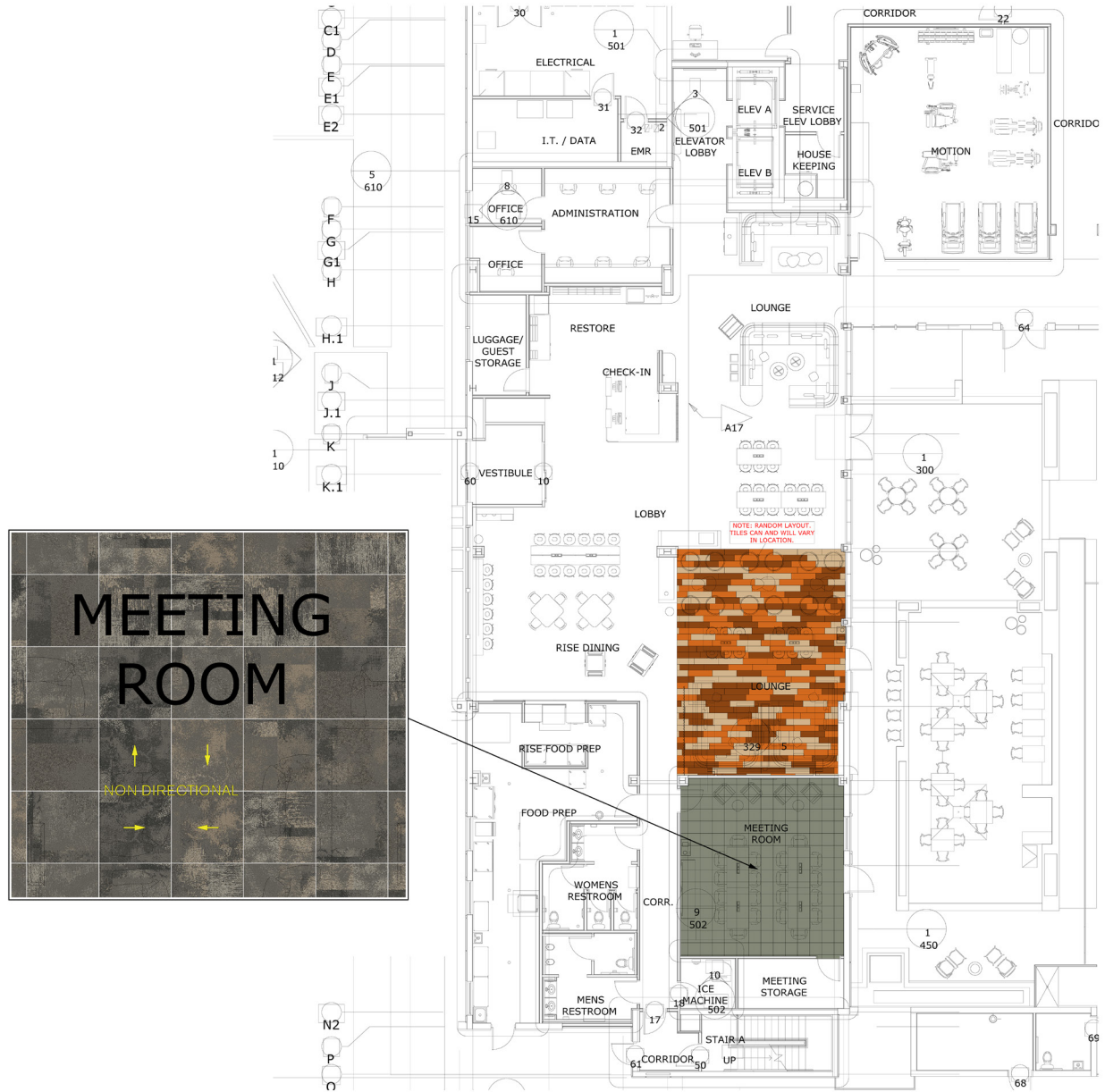
Meeting Room Product	Marriott Spec. #	Color #	Size	Installation
Raw <b>A</b>	278014	101054 Urban	50cm x 50cm	Non Directional

Installation Specifications	Marriott Spec.#	Description
TacTiles for Installation (500 TacTiles/Roll)	250475	125sq yds/ Roll Adhesive
<b>Pad / Underlayment</b>	<b>NOT REQUIRED</b>	

# MEETING ROOM INSTALLATION PLAN

All quantities are estimates only and are based on plans provided. Site measurements and field verifications are recommended to ensure accuracy. These quantities are not intended to be used for material ordering purposes. Since waste factors may vary by installer, actual ordering quantities are the responsibility of your flooring contractor.



**LEGEND**

**A**

**PRODUCT:** RAW  
**COLOR:** 101054 URBAN  
**SIZE:** 50cm  
**INSTALLED:** NON DIRECTIONAL