

Interface Hospitality

ALOFT HOTELS

Approved Prototypes

Aloft Hotels
Courtyard
Delta Hotels
Element
Fairfield Inn & Suites
Four Points
Marriott Hotels
Residence Inn
Sheraton
Towneplace Suites

Why **Interface** Hospitality?

Interface Hospitality is a **Marriott International** approved supplier of carpet and LVT. We are currently approved on the following prototypes:

- Aloft Hotels
- Courtyard
- Delta Hotels
- Element
- Fairfield Inn & Suites
- Four Points
- Marriott Hotels
- Residence Inn
- Sheraton
- Towneplace Suites



1. **6-8 WEEK LEAD TIME** for anything not already in stock.
2. **NO ROLL SIZES OR WIDTHS** to deal with. We come in boxes!
3. What about **UNIT COST?** We can compare the real cost of tile vs. broadloom for each project and show you the true savings.
4. **15 YEAR WARRANTY.** Say no more.
5. **SELECTIVE REPLACEMENT** means little to no disruptions to hotel operations.
6. **INTERSEPT®** antimicrobial protection. Keepin' it clean.
7. **PROTEKT²** stain resistant technology. Keepin' it real clean!
8. Greater **EASE OF HANDLING**, less liability related to mis-cutting of broadloom.
9. Order and installation is a breeze with our **ESTIMATES, SEAMING DIAGRAMS, AND RENDERINGS.**
10. All of our yarns are **100% SOLUTION-DYED NYLON.**
11. **VARIOUS TILE SIZES** make it easier to design/define spaces and sub-spaces.
12. Our **CARPET** and **LVT** work together in seamless integration, with no transition strips.
13. We are **SUSTAINABLE:** All of our products are **EPD** verified.
14. Interface Hospitality's **RE-ENTRY RECYCLING** program results in our products having up to 80% recycled content, from returned/used carpet.
15. All Interface Hospitality carpet is climate neutral **COOL CARPET**, meaning no greenhouse gases!

Why **Interface** Hospitality?

1. Lead Time

If not in stock, our lead times are 6-8 weeks and all products are manufactured in the USA. FOB Union City, Georgia.

2. No Roll Sizes or Widths

There are no widths and roll sizes to deal with, which can often lead to hidden costs and unused material.

3. Unit Cost

The unit cost is only part of the evaluation when comparing carpet tile to broadloom for your hotel. Waste is a big consideration with total project cost. We can develop project specific ROI's to compare total project cost for your individual property.

4. 15 Year Warranty

All Interface Hospitality products are hard wearing, provide lasting protection against excessive surface wear, edge ravel, backing separation, shrinking, stretching, permanent soiling and staining.

5. Selective Replacement

Whether you're replacing a single Guestroom, a corridor, or an entire hotel, you can do so without disruption. Interface Hospitality's selective replacement enables old flooring to be replaced quickly and efficiently any day of the week, your carpet replacement costs can be cut by up to 50%.

6. Intersept®

Mold Protection no matter what's spilled on the floor, our proprietary antimicrobial preservative, Intersept®, protects our modular carpet against the growth of odor-causing bacteria guaranteed. With proper maintenance, Intersept treated carpet safely and effectively inhibits the growth of mold and other bacteria so your floors are always fresh. All Interface carpet is standard with Intersept.

7. Protekt²

Because stain resist technology - Protekt² - is built into Interface carpet tiles, a topical stain resist treatment is not necessary. The additional polymer is included when nylon is manufactured so it permanently increases stain resistance. We conducted stain tests on our products and compared them to products with a topical treatment. The results? Our uncoated fibers performed just as well as the treated ones. Additionally, the fluorinated chemicals traditionally used in stain resist treatments, when they do wash off, persist in the environment for thousands of years. With Protekt², you get permanent stain resistance, not permanent pollution.

8. Ease of Handling

Carpet tile offers greater ease of handling, and installers have less liability related to possible mis-cutting of broadloom.

9. Installation

Order and installation is a breeze with our estimates, seaming diagrams and renderings.

10. 100% Solution-dyed Nylon

Vibrant color that does not fade. All Interface Hospitality carpet tiles are made from durable, stain resistant, 100% solution dyed nylon. Offering superior color fastness and a wide array of colors and textures, solution dyed nylon is less harmful to the environment, using no water or toxic chemicals in the manufacturing process.

11. Various Sizes

Using, 50cm, 1m, 25cm x 1m and 50cm x 1m tiles allows for optimal pattern repeats, asymmetrical or symmetrical designs and color use. It also allows design to define spaces / nesting within larger areas.

12. Integrated System

Interface modular tiles span a wide selection of designs that offer pattern, color and texture options for a myriad of flooring needs. Tiles come in a variety of shape and size modules that work seamlessly and interchangeably with each other. This compatibility allows for holistic flooring solutions with expansive design flexibility.

13. Sustainable Choice

Environmental Responsibility. Interface Hospitality was the industry's first to earn an EPD (Environmental Product Declaration), which evaluates consistent factors based on full lifecycle assessment (LCA). We now have published EPDs for 99% of our products globally. In addition, all of our products with GlasBac®, and GlasBacRE backings meet NSF/ANSI 140 Sustainable Carpet Assessment Standard (SCAS) for carpet.

14. Carpet Recycling Program: ReEntry®

Recyclable is Now a Reality. Through our ReEntry program and partnerships with our fiber suppliers and recycling centers throughout North America, separated Type 6 and 6,6 nylon are recycled into new 6 and 6,6 nylon, while separated GlasBac® and similar competitor backings are recycled into GlasBac®RE non-virgin PVC backing using our Cool Blue™ technology. The result? Products with up to 80% total recycled content, including as much as 35% post-consumer content.

15. Cool Carpet™

Our third party verified carbon offset program zeroes out all greenhouse gas (GHG) emissions associated with the entire lifecycle of your carpet. An independent testing program that identifies carpet and adhesives with very low emissions of VOCs to help improve indoor air quality.

16. Dimensional Stability

Interface GlasBac® backing has been tested and proven in the marketplace for over 30 years. Engineered to provide superior dimensional stability, GlasBac® modular carpet tiles will not stretch or shrink when exposed to heat or cold, heavy foot or rolling traffic.

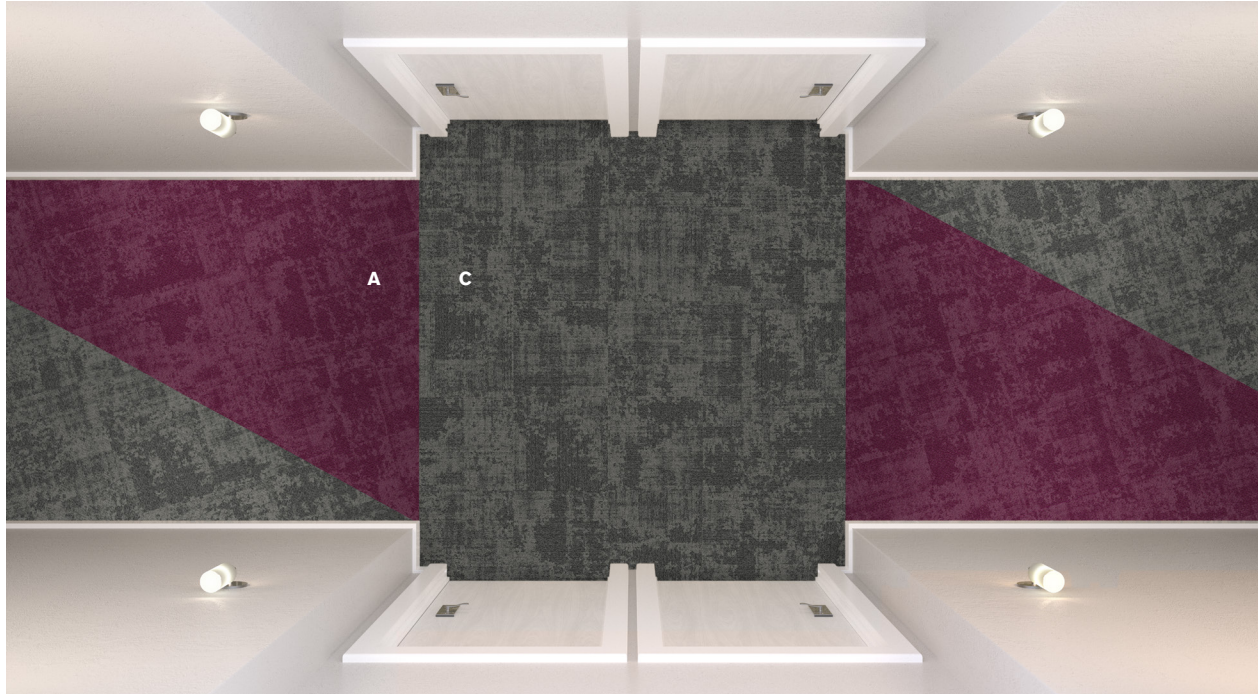
17. Sound Absorption

Quite space is essential when people need to focus and concentrate. Sound absorption is therefore critical when colleagues need to collaborate without becoming a distraction to their neighbors. Interface Hospitality carpets provide high sound absorption and insulation.

Whole Eclectic Corridor Prototype Order Information

FOR PRICING CONTACT: Mike Webb mike.webb@interface.com or your local Account Executive.

FOR ORDER ENTRY / SHIPPING CONTACT: Customer Service 1.800.634.6032



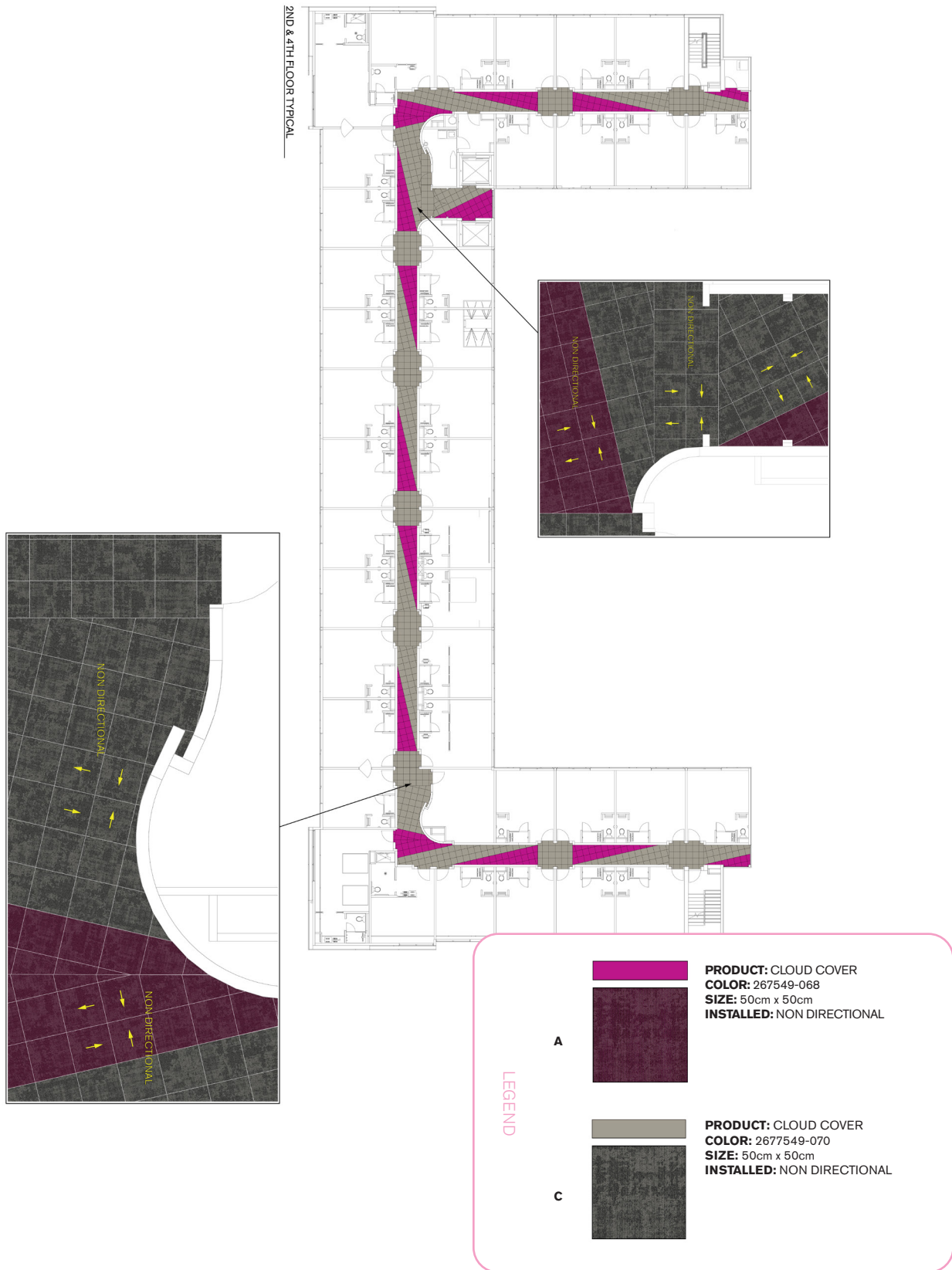
Corridor Products	Marriott Spec. #	Sample #	Color #	Size	Installation
Cloud Cover A	320568	267549-068		50cm x 50cm	Non Directional
Cloud Cover C	320572	267549-070		50cm x 50cm	Non Directional

Installation Specifications	Marriott Spec.#	Description
2000 Plus		Adhesive
Pad / Underlayment	NOT REQUIRED	

* Floors 1 and 3 receive the teal color and 2 and 4 receive the magenta color.

CORRIDOR INSTALLATION PLAN

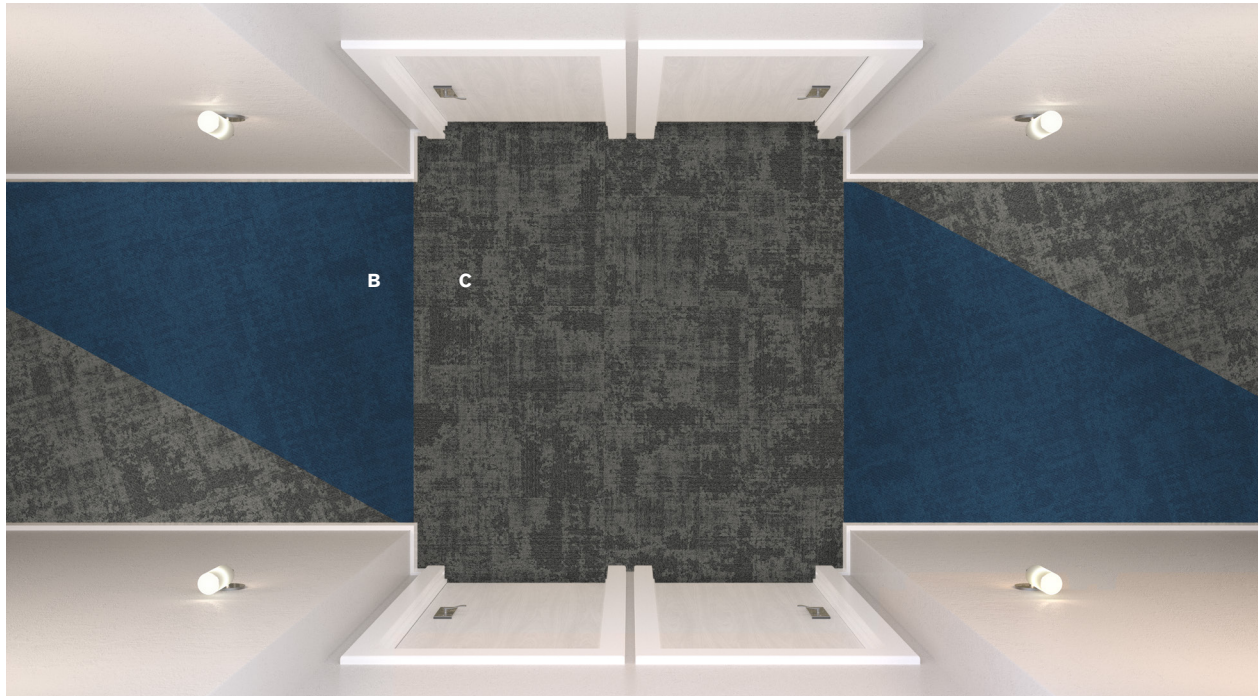
All quantities are estimates only and are based on plans provided. Site measurements and field verifications are recommended to ensure accuracy. These quantities are not intended to be used for material ordering purposes. Since waste factors may vary by installer, actual ordering quantities are the responsibility of your flooring contractor.



Whole Eclectic Corridor Prototype Order Information

FOR PRICING CONTACT: Mike Webb mike.webb@interface.com or your local Account Executive.

FOR ORDER ENTRY / SHIPPING CONTACT: Customer Service 1.800.634.6032



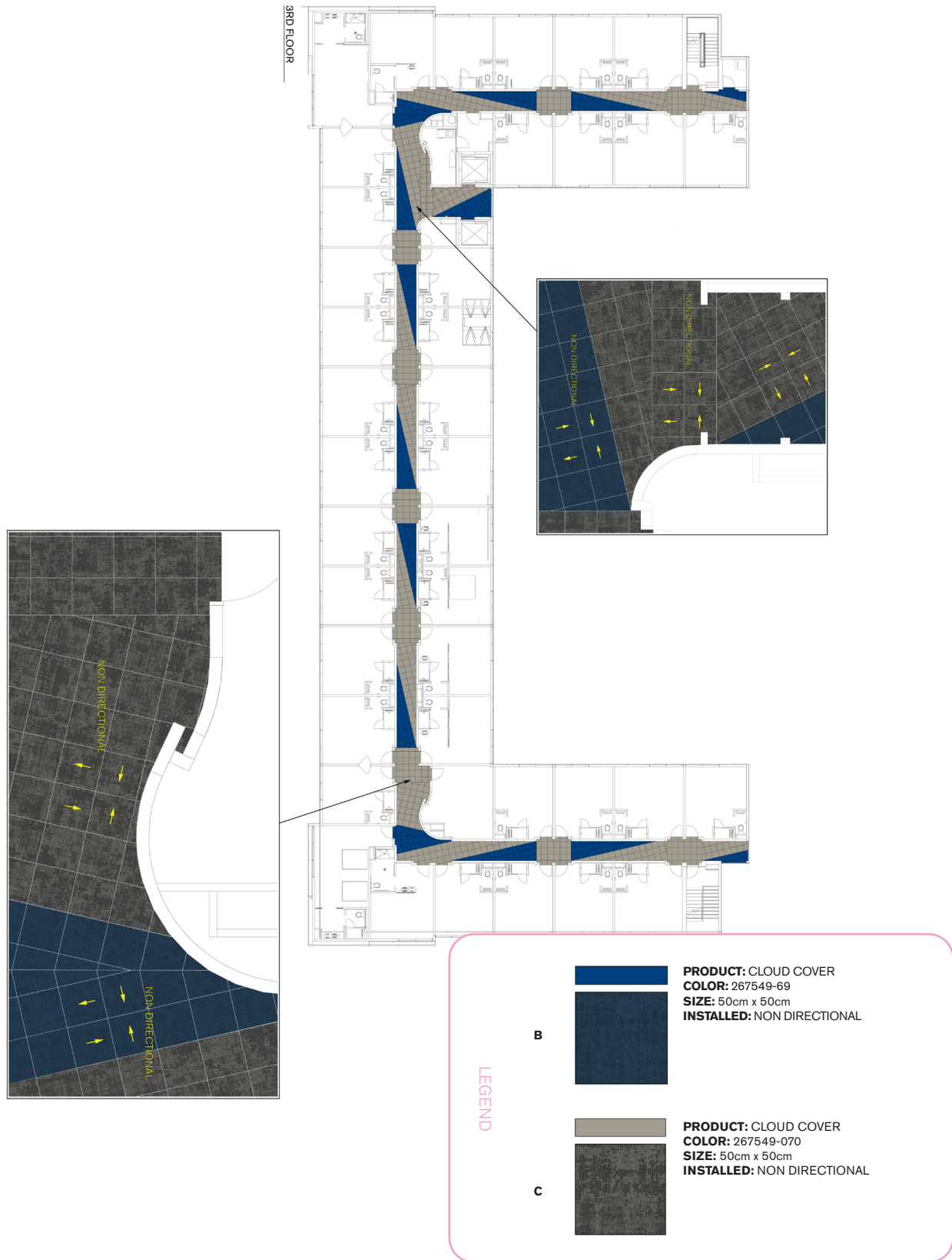
Corridor Products	Marriott Spec. #	Sample #	Color #	Size	Installation
Cloud Cover B	320569	267549-069		50cm x 50cm	Non Directional
Cloud Cover C	320572	267549-070		50cm x 50cm	Non Directional

Installation Specifications	Marriott Spec.#	Description
2000 Plus		Adhesive
Pad / Underlayment	NOT REQUIRED	

* Floors 1 and 3 receive the teal color and 2 and 4 receive the magenta color.

CORRIDOR INSTALLATION PLAN

All quantities are estimates only and are based on plans provided. Site measurements and field verifications are recommended to ensure accuracy. These quantities are not intended to be used for material ordering purposes. Since waste factors may vary by installer, actual ordering quantities are the responsibility of your flooring contractor.



Eclectic Guestroom & Generica America Rug Prototype Order Information

FOR PRICING CONTACT: Mike Webb mike.webb@interface.com or your local Account Executive.

FOR ORDER ENTRY / SHIPPING CONTACT: Customer Service 1.800.634.6032

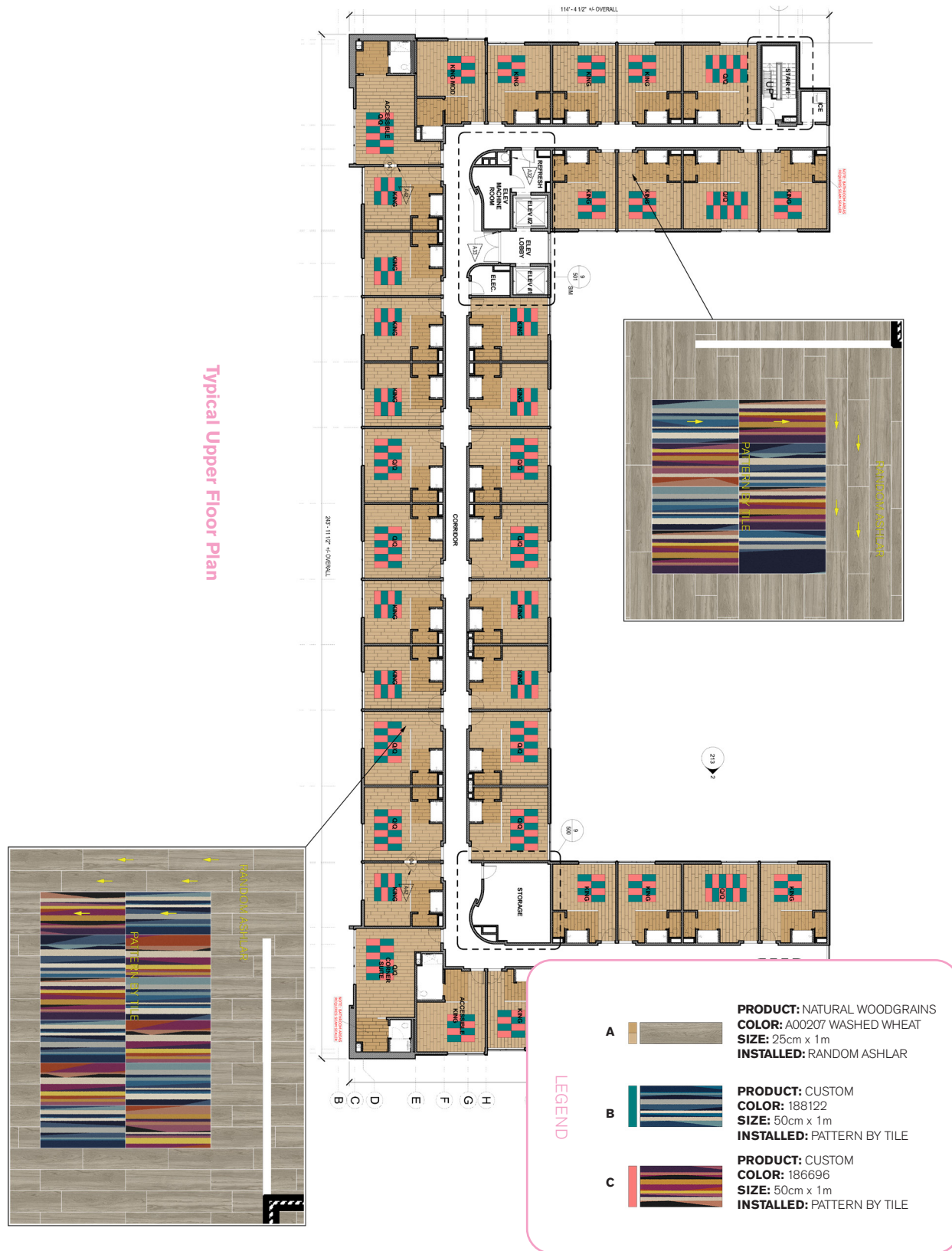


Guestroom Products	Marriott Spec. #	Kit #	Color #	Size	Installation
LVT Natural Woodgrains	276813		A00207 Washed Wheat	25cm x 1m	Random Ashlar
Area Rug Kit	299179	98-1110-25	188122 & 186696	3m x 2m Queen Room	Pattern By Tile
Area Rug Kit	299177	98-1110-24	188122 & 186696	2m x 2m King Room	Pattern By Tile
Installation Specifications	Marriott Spec.#	Description			
XL2000 PLUS Adhesive		Double stick install			
Selitbloc LVT Underlayment	276822	Underlayment for entire room with carpet and LVT system			

*Pad not required with carpet tile but acoustical underlayment is required with the LVT and carpet tile system

GUESTROOM INSTALLATION PLAN

All quantities are estimates only and are based on plans provided. Site measurements and field verifications are recommended to ensure accuracy. These quantities are not intended to be used for material ordering purposes. Since waste factors may vary by installer, actual ordering quantities are the responsibility of your flooring contractor.



Eclectic Guestroom & Big Green Rug Prototype Order Information

FOR PRICING CONTACT: Mike Webb mike.webb@interface.com or your local Account Executive.

FOR ORDER ENTRY / SHIPPING CONTACT: Customer Service 1.800.634.6032

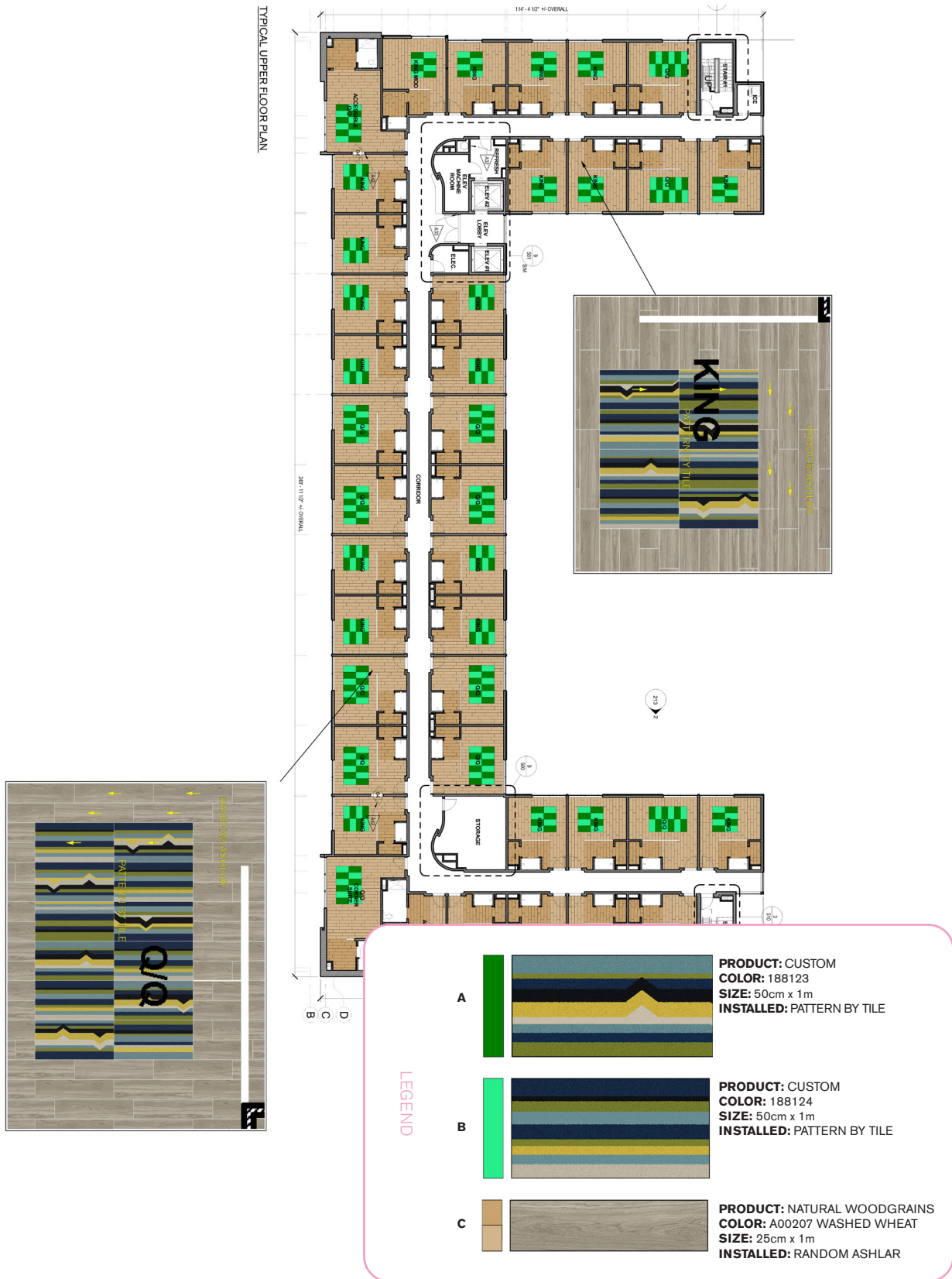


Guestroom Products	Marriott Spec. #	Kit #	Color #	Size	Installation
LVT Natural Woodgrains	276813		A00207 Washed Wheat	25cm x 1m	Random Ashlar
Area Rug Kit	299140	98-1110-23	188123 & 188124	3m x 2m Queen Room	Pattern By Tile
Area Rug Kit	299142	98-1110-22	188123 & 188124	2m x 2m King Room	Pattern By Tile
Installation Specifications	Marriott Spec.#	Description			
XL2000 PLUS Adhesive		Double stick install			
Selitbloc LVT Underlayment	276822	Underlayment for entire room with carpet and LVT system			

*Pad not required with carpet tile but acoustical underlayment is required with the LVT and carpet tile system

GUESTROOM INSTALLATION PLAN

All quantities are estimates only and are based on plans provided. Site measurements and field verifications are recommended to ensure accuracy. These quantities are not intended to be used for material ordering purposes. Since waste factors may vary by installer, actual ordering quantities are the responsibility of your flooring contractor.



Eclectic Guestroom & Electric Grid Rug Prototype Order Information

FOR PRICING CONTACT: Mike Webb mike.webb@interface.com or your local Account Executive.

FOR ORDER ENTRY / SHIPPING CONTACT: Customer Service 1.800.634.6032



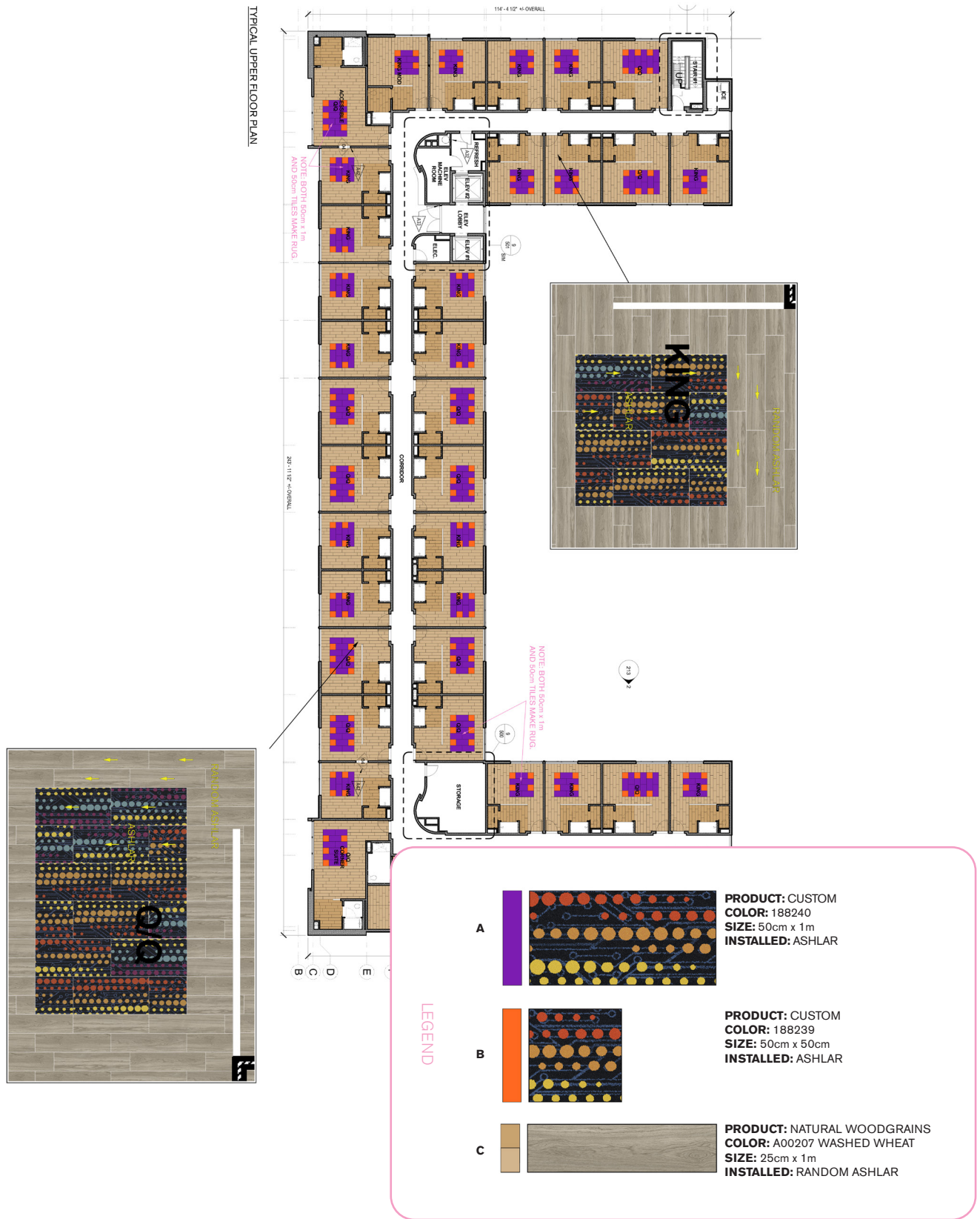
Guestroom Products	Marriott Spec. #	Kit #	Color #	Size	Installation
LVT Natural Woodgrains	276813		A00207 Washed Wheat	25cm x 1m	Random Ashlar
Area Rug Kit	300331	98.1110.33	188239 & 188240	3m x 2m Queen Room	Pattern By Tile
Area Rug Kit	300335	98.1110.32	188240 & 188239	2m x 2m King Room	Pattern By Tile

Installation Specifications	Marriott Spec.#	Description
XL2000 PLUS Adhesive		Double stick install
Selitbloc LVT Underlayment	276822	Underlayment for entire room with carpet and LVT system

*Pad not required with carpet tile but acoustical underlayment is required with the LVT and carpet tile system

GUESTROOM INSTALLATION PLAN

All quantities are estimates only and are based on plans provided. Site measurements and field verifications are recommended to ensure accuracy. These quantities are not intended to be used for material ordering purposes. Since waste factors may vary by installer, actual ordering quantities are the responsibility of your flooring contractor.



Eclectic Guestroom & Electric Grid Rug Prototype Order Information

FOR PRICING CONTACT: Mike Webb mike.webb@interface.com or your local Account Executive.

FOR ORDER ENTRY / SHIPPING CONTACT: Customer Service 1.800.634.6032



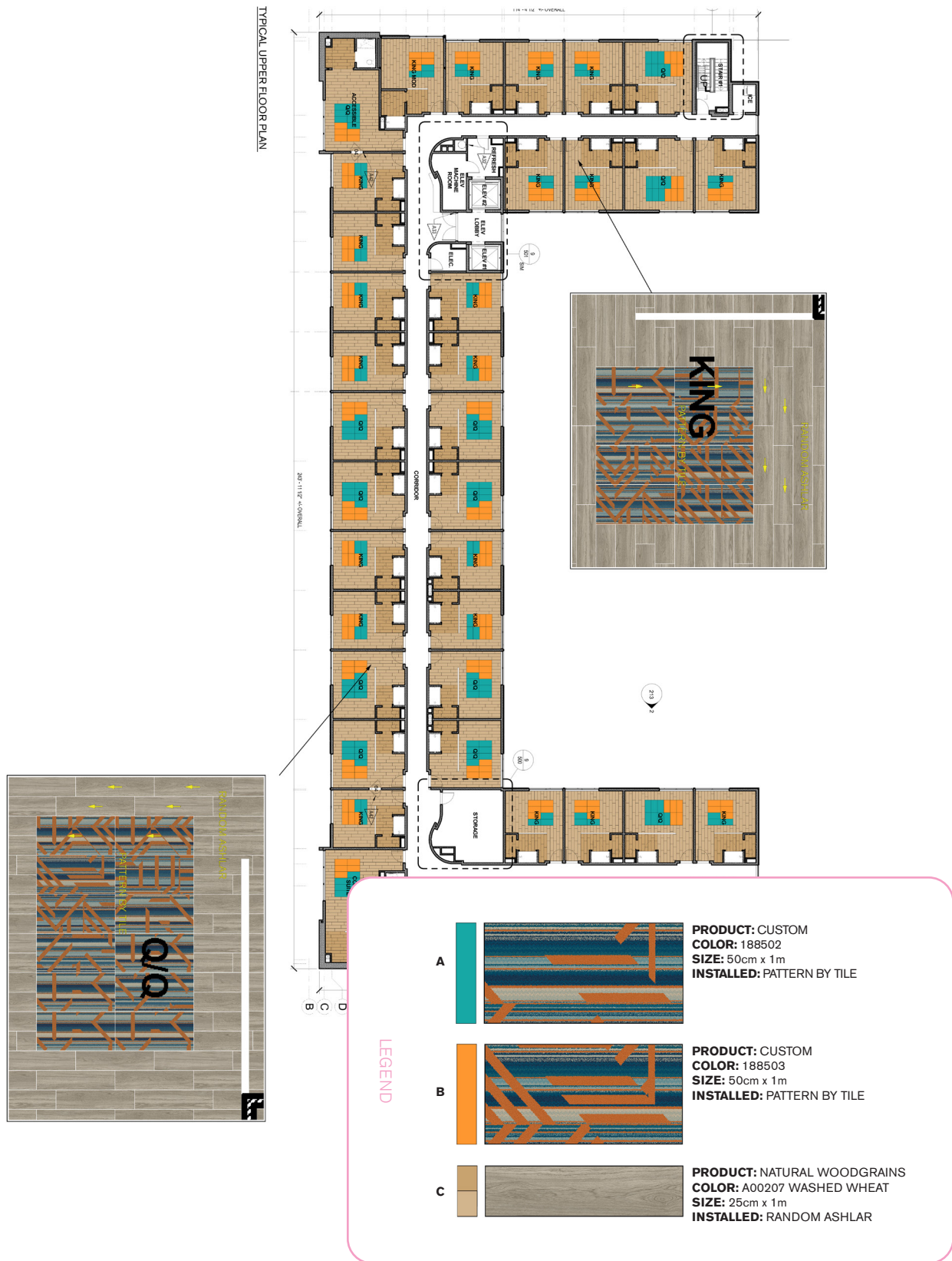
Guestroom Products	Marriott Spec. #	Kit #	Color #	Size	Installation
Area Rug Kit	304063	98.1110.36	188502 & 188503	2m x 3m	Ashlar
Area Rug Kit	304065	98.1110.37	to come	2m x 2m	Ashlar
LVT Natural Woodgrains	276813		A00207 Washed Wheat	25cm x 1m	Random Ashlar

Installation Specifications	Marriott Spec.#	Description
XL2000 PLUS Adhesive		Double stick install
Selitbloc LVT Underlayment	276822	Underlayment for entire room with carpet and LVT system

*Pad not required with carpet tile but acoustical underlayment is required with the LVT and carpet tile system

GUESTROOM INSTALLATION PLAN

All quantities are estimates only and are based on plans provided. Site measurements and field verifications are recommended to ensure accuracy. These quantities are not intended to be used for material ordering purposes. Since waste factors may vary by installer, actual ordering quantities are the responsibility of your flooring contractor.



Back Of House Prototype Order Information

FOR PRICING CONTACT: Mike Webb mike.webb@interface.com or your local Account Executive.

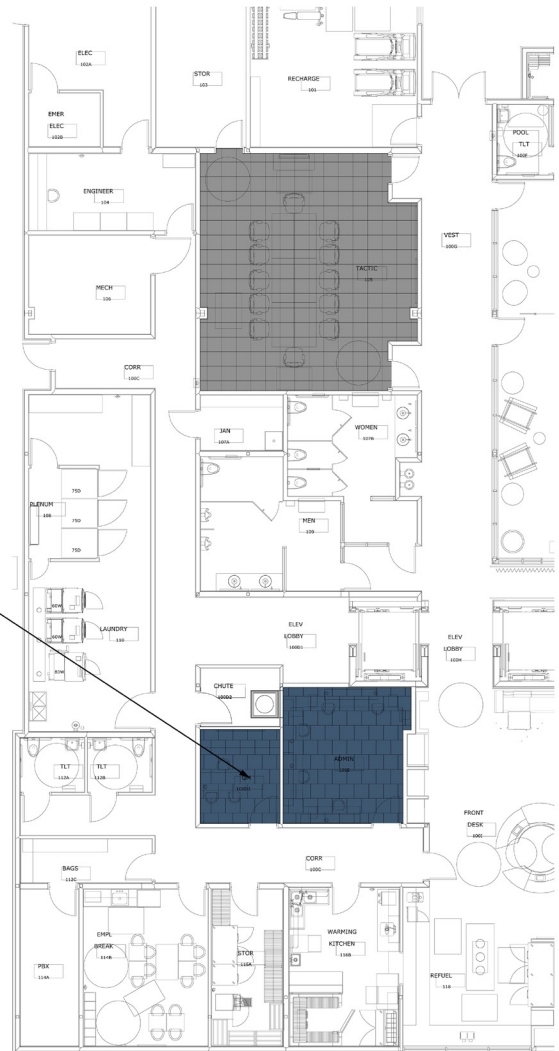
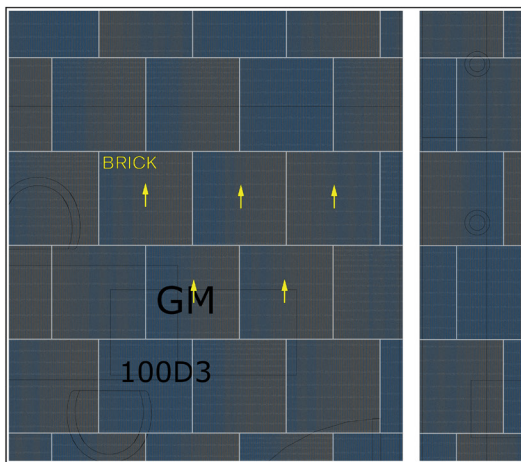
FOR ORDER ENTRY / SHIPPING CONTACT: Customer Service 1.800.634.6032



Back Of House Product	Marriott Spec. #	Sample #	Color #	Size	Installation
RMS 303 A	278898	255873-047	179710	50cm x 50cm	Brick
Installation Specifications	Marriott Spec.#	Description			
TacTiles for Installation (500 TacTiles/Roll)	250475	60sq yds/ Roll Adhesive			
Pad / Underlayment	NOT REQUIRED				

BACK OF HOUSE INSTALLATION PLAN

All quantities are estimates only and are based on plans provided. Site measurements and field verifications are recommended to ensure accuracy. These quantities are not intended to be used for material ordering purposes. Since waste factors may vary by installer, actual ordering quantities are the responsibility of your flooring contractor.



LEGEND

A



PRODUCT: RMS303
COLOR: 179710
SIZE: 50cm
INSTALLED: BRICK