

*Approved InterContinental Hotel
Group - IHG Prototypes*

Even Hotels
Holiday Inn Express

Interface Hospitality
INTERCONTINENTAL
HOTEL GROUP

Why **Interface** Hospitality?

Interface Hospitality is an **InterContinental Hotel Group - IHG** approved supplier of carpet tile and LVT. We are currently approved on the following prototypes:

- Even Hotels
- Holiday Inn Express

1. **6-8 WEEK LEAD TIME** for anything not already in stock.
2. **NO ROLL SIZES OR WIDTHS** to deal with. We come in boxes!
3. What about **UNIT COST?** We can compare the real cost of tile vs. broadloom for each project and show you the true savings.
4. **15 YEAR WARRANTY.** Say no more.
5. **SELECTIVE REPLACEMENT** means little to no disruptions to hotel operations.
6. **INTERSEPT[®]** antimicrobial protection. Keepin' it clean.
7. **PROTEKT²** stain resistant technology. Keepin' it real clean!
8. Greater **EASE OF HANDLING**, less liability related to mis-cutting of broadloom.
9. Order and installation is a breeze with our **ESTIMATES, SEAMING DIAGRAMS, AND RENDERINGS.**
10. All of our yarns are **100% SOLUTION-DYED NYLON.**
11. **VARIOUS TILE SIZES** make it easier to design/define spaces and sub-spaces.
12. Our **CARPET** and **LVT** work together in seamless integration, with no transition strips.
13. **RELEASABLE GLUE** mean an easy, no glue installation!
14. We are **SUSTAINABLE:** All of our products are **EPD** verified.
15. Interface Hospitality's **RE-ENTRY RECYCLING** program results in our products having up to 80% recycled content, from returned/used carpet.
16. All Interface Hospitality carpet is climate neutral **COOL CARPET**, meaning no greenhouse gases!

Why **Interface** Hospitality?

1. Lead Time

If not in stock, our lead times are 6-8 weeks and all products are manufactured in the USA. FOB Union City, Georgia.

2. No Roll Sizes or Widths

There are no widths and roll sizes to deal with, which can often lead to hidden costs and unused material.

3. Unit Cost

The unit cost is only part of the evaluation when comparing carpet tile to broadloom for your hotel. Waste is a big consideration with total project cost. We can develop project specific ROI's to compare total project cost for your individual property.

4. 15 Year Warranty

All Interface Hospitality products are hard wearing, provide lasting protection against excessive surface wear, edge ravel, backing separation, shrinking, stretching, permanent soiling and staining.

5. Selective Replacement

Whether you're replacing a single guest room, a corridor, or an entire hotel, you can do so without disruption. Interface Hospitality's selective replacement enables old flooring to be replaced quickly and efficiently any day of the week, your carpet replacement costs can be cut by up to 50%.

6. Intersept®

Mold Protection no matter what's spilled on the floor, our proprietary antimicrobial preservative, Intersept®, protects our modular carpet against the growth of odor-causing bacteria guaranteed. With proper maintenance, Intersept treated carpet safely and effectively inhibits the growth of mold and other bacteria so your floors are always fresh. All Interface carpet is standard with Intersept.

7. Protekt²

Because stain resist technology - Protekt² - is built into Interface carpet tiles, a topical stain resist treatment is not necessary. The additional polymer is included when nylon is manufactured so it permanently increases stain resistance. We conducted stain tests on our products and compared them to products with a topical treatment. The results? Our uncoated fibers performed just as well as the treated ones. Additionally, the fluorinated chemicals traditionally used in stain resist treatments, when they do wash off, persist in the environment for thousands of years. With Protekt², you get permanent stain resistance, not permanent pollution.

8. Ease of Handling

Carpet tile offers greater ease of handling, and installers have less liability related to possible mis-cutting of broadloom.

9. Installation

Order and installation is a breeze with our estimates, seaming diagrams and renderings.

10. 100% Solution-dyed Nylon

Vibrant color that does not fade. All Interface Hospitality carpet tiles are made from durable, stain resistant, 100% solution dyed nylon. Offering superior color fastness and a wide array of colors and textures, solution dyed nylon is less harmful to the environment, using no water or toxic chemicals in the manufacturing process.

11. Various Sizes

Using 50cm, 1m, 25cm x 1m and 50cm x 1m tiles allows for optimal pattern repeats, asymmetrical or symmetrical designs and color use. It also allows design to define spaces / nesting within larger areas.

12. Integrated System

Interface modular tiles span a wide selection of designs that offer pattern, color and texture options for a myriad of flooring needs. Tiles come in a variety of shape and size modules that work seamlessly and interchangeably with each other. This compatibility allows for holistic flooring solution with expansive design flexibility.

13. Releasable Glue

Installation is easy and flexible with releasable glue.

14. Sustainable Choice

Environmental Responsibility. Interface Hospitality was the industry's first to earn an EPD (Environmental Product Declaration), which evaluates consistent factors based on full lifecycle assessment (LCA). We now have published EPDs for 99% of our products globally. In addition, all of our products with GlasBac® and GlasBacRE backings meet NSF/ANSI 140 Sustainable Carpet Assessment Standard (SCAS) for carpet.

15. Carpet Recycling Program: ReEntry®

Recyclable is Now a Reality. Through our ReEntry program and partnerships with our fiber suppliers and recycling centers throughout North America, separated Type 6 and 6,6 nylon are recycled into new 6 and 6,6 nylon, while separated GlasBac® and similar competitor backings are recycled into GlasBac®RE non-virgin PVC backing using our Cool Blue™ technology. The result? Products with up to 80% total recycled content, including as much as 35% post-consumer content.

16. Cool Carpet™

Our third party verified carbon offset program zeroes out all greenhouse gas (GHG) emissions associated with the entire lifecycle of your carpet. An independent testing program that identifies carpet and adhesives with very low emissions of VOCs to help improve indoor air quality.

17. Dimensional Stability

Interface GlasBac® backing has been tested and proven in the marketplace for over 30 years. Engineered to provide superior dimensional stability, GlasBac® modular carpet tiles will not stretch or shrink when exposed to heat or cold, heavy foot or rolling traffic.

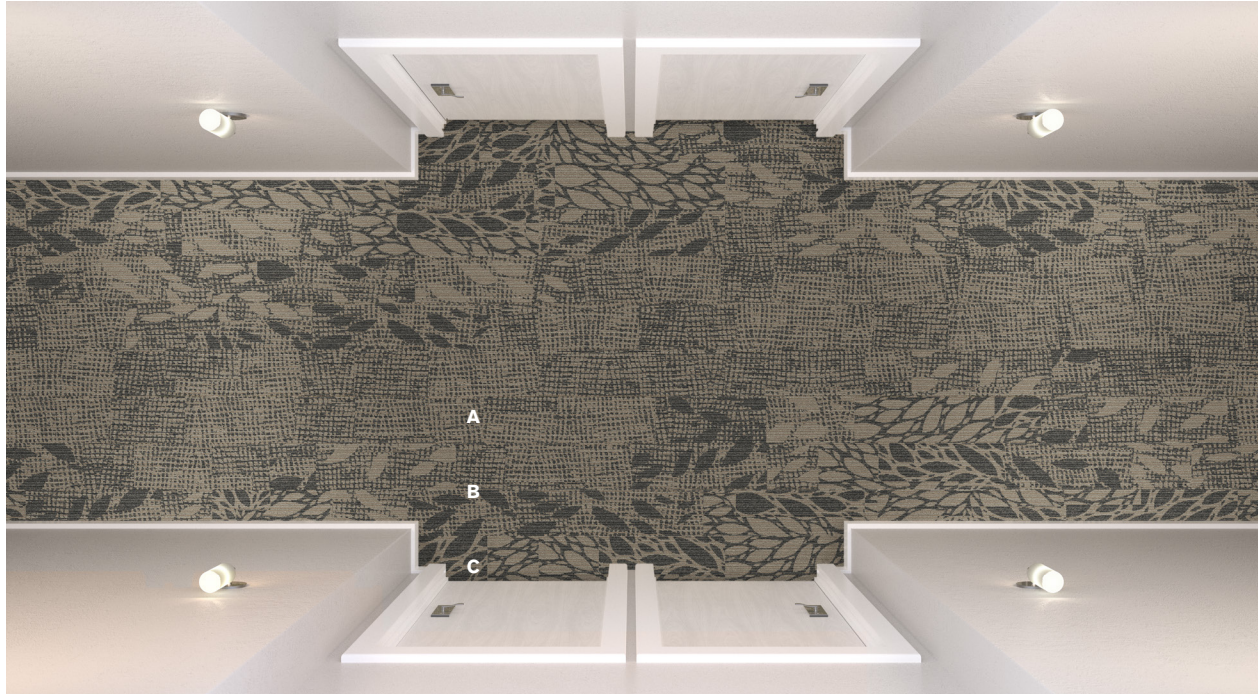
18. Sound Absorption

Quite space is essential when people need to focus and concentrate. Sound absorption is therefore critical when colleagues need to collaborate without becoming a distraction to their neighbors. Interface Hospitality carpets provide high sound absorption and insulation.

Balance Scheme Version 1.0 Corridor Prototype Order Information

FOR PRICING CONTACT: Morre McCollum morre.mccollum@interface.com

FOR ORDER ENTRY / SHIPPING CONTACT: Customer Service 1.800.634.6032 CustomerSuccess-Hospitality@interface.com

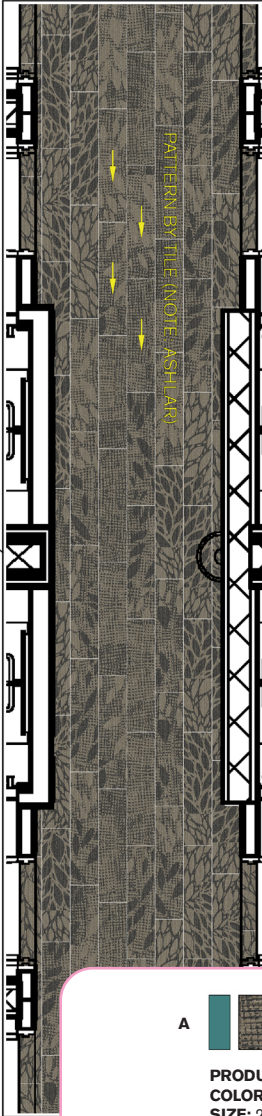
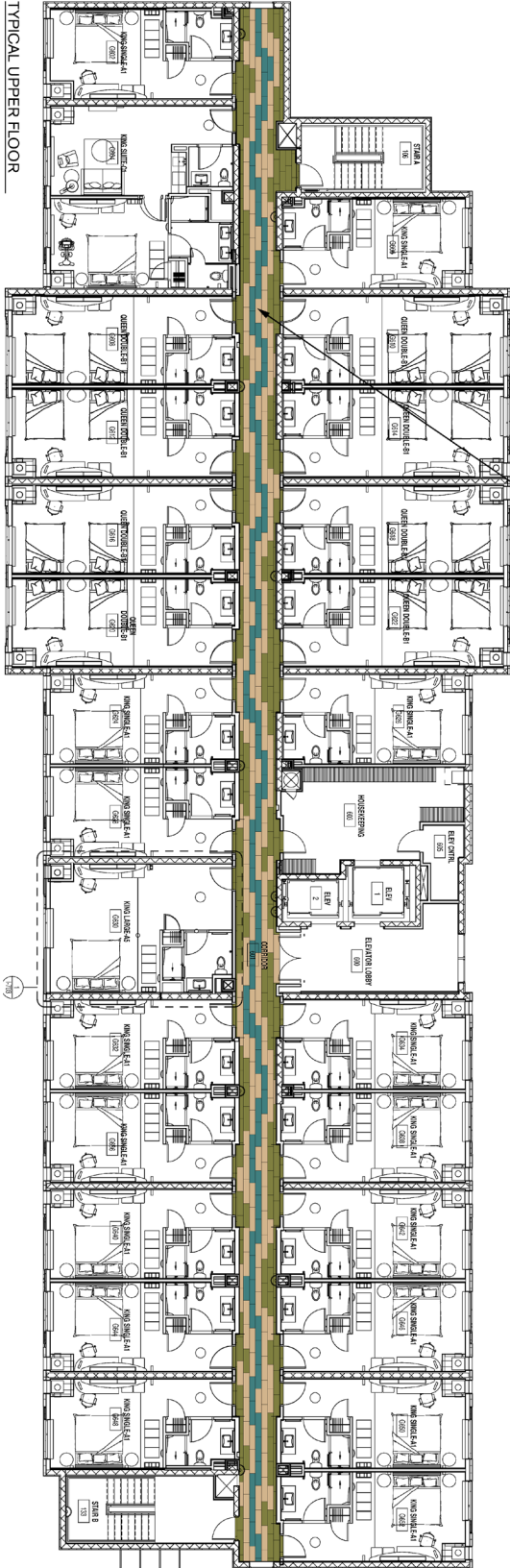


Corridor Products	IHG Spec. #	Sample #	Color #	Size	Installation
GN160 A	EP-CPT-01	266317-046	188744	25cm x 1m	Pattern By Tile
Custom B	EP-CPT-02	266317-047	188745	25cm x 1m	Pattern By Tile
GN157 C	EP-CPT-03	266317-045	188743	25cm x 1m	Pattern By Tile

Installation Specifications	Description
XL 2000 PLUS	Adhesive
GlasBac	Carpet Tile Backing

CORRIDOR INSTALLATION PLAN

All quantities are estimates only and are based on plans provided. Site measurements and field verifications are recommended to ensure accuracy. These quantities are not intended to be used for material ordering purposes. Since waste factors may vary by installer, actual ordering quantities are the responsibility of your flooring contractor.



NOTE: LAYOUT UNDUATES WITH 1 TILE OF #188744 IN MIDDLE -> TILE #188745 ON EACH SIDE -> TILE #188743 TO FILL REMAINDER OF CORRIDOR.

LEGEND

A		<p>PRODUCT: GN160 COLOR: 188744 SIZE: 25cm x 1m INSTALLED: PATTERN BY TILE</p>
B		<p>PRODUCT: CUSTOM COLOR: 188745 SIZE: 25cm x 1m INSTALLED: PATTERN BY TILE</p>
C		<p>PRODUCT: GN157 COLOR: 188743 SIZE: 25cm x 1m INSTALLED: PATTERN BY TILE</p>

Balance Scheme Version 1.0 Elevator Lobby Prototype Order Information

FOR PRICING CONTACT: Morre McCollum morre.mccollum@interface.com

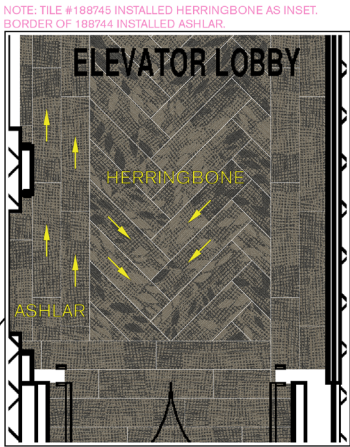
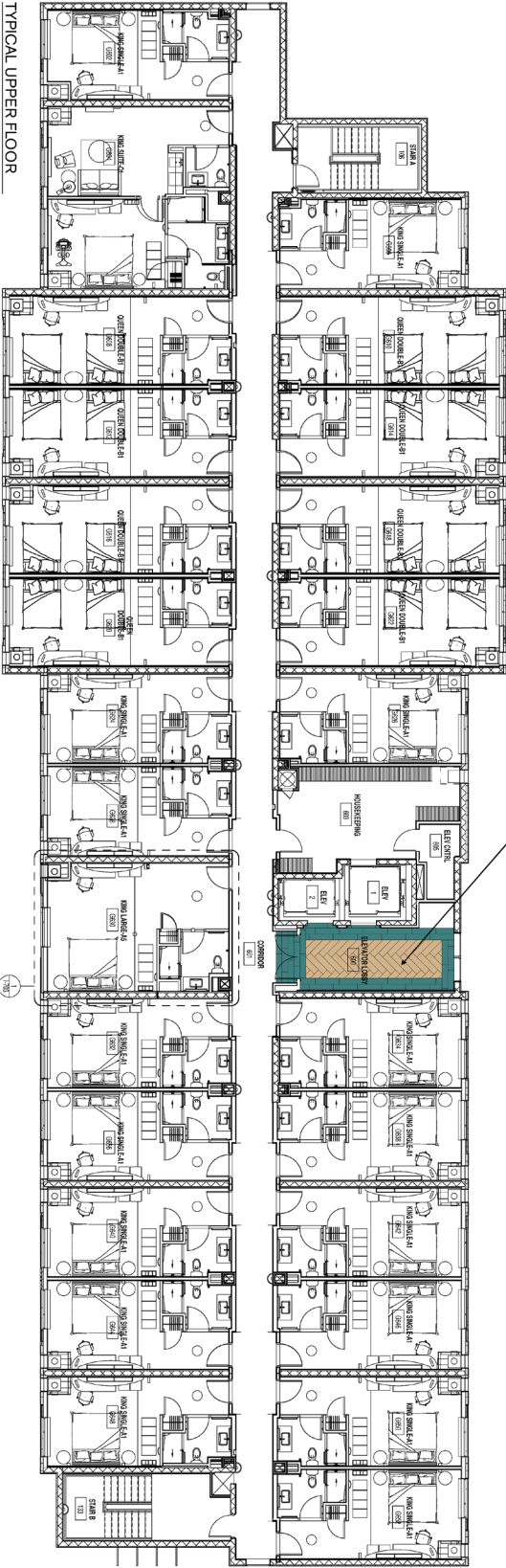
FOR ORDER ENTRY / SHIPPING CONTACT: Customer Service 1.800.634.6032 CustomerSuccess-Hospitality@interface.com



Elevator Lobby Products	IHG Spec.#	Sample #	Color #	Size	Installation
GN160 A	EP-CPT-01	266317-046	188744	25cm x 1m	Ashlar
Custom B	EP-CPT-02	266317-047	188745	25cm x 1m	Herringbone
Installation Specifications	Description				
XL2000 PLUS	Adhesive				
GlasBac	Carpet Tile Backing				

ELEVATOR LOBBY INSTALLATION PLAN

All quantities are estimates only and are based on plans provided. Site measurements and field verifications are recommended to ensure accuracy. These quantities are not intended to be used for material ordering purposes. Since waste factors may vary by installer, actual ordering quantities are the responsibility of your flooring contractor.



LEGEND

A

B

PRODUCT: GN160
COLOR: 188744
SIZE: 25cm x 1m
INSTALLED: PATTERN BY TILE

PRODUCT: CUSTOM
COLOR: 188745
SIZE: 25cm x 1m
INSTALLED: PATTERN BY TILE

Balance Scheme Version 1.0 Guestroom Prototype Order Information

FOR PRICING CONTACT: Morre McCollum morre.mccollum@interface.com

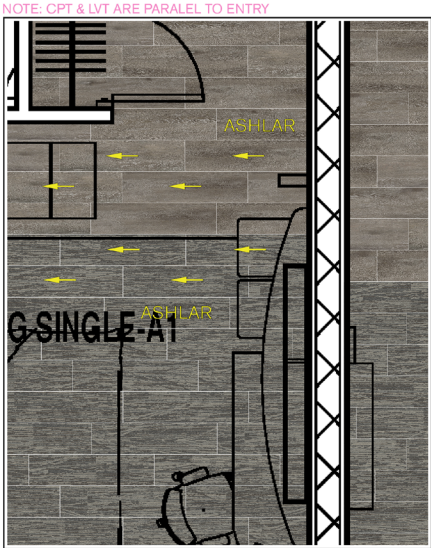
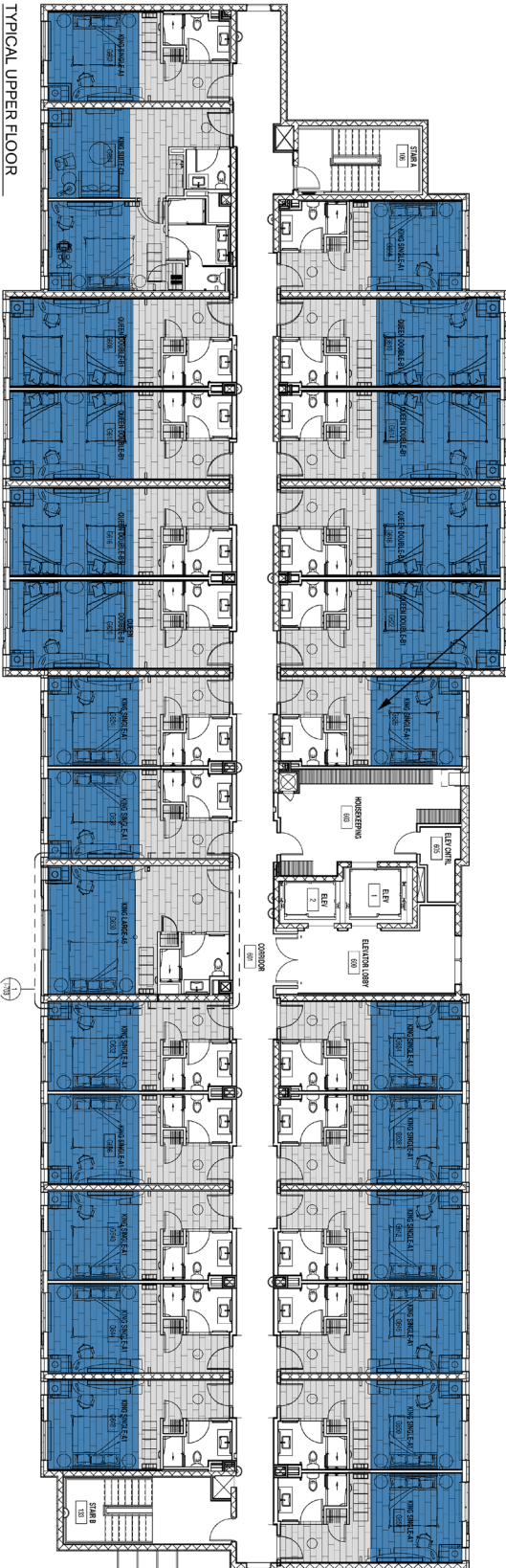
FOR ORDER ENTRY / SHIPPING CONTACT: Customer Service 1.800.634.6032 CustomerSuccess-Hospitality@interface.com



Guestroom Products	IHG Spec.#	Sample #	Color #	Size	Installation
RMS 507 A	EG-CPT-01	266317-005	187632	25cm x 1m	Ashlar
Textured Woodgrains B	EP-LVT-01		A00405 Grey Dune	25cm x 1m	Ashlar
Installation Specifications	Description				
XL2000 PLUS	Adhesive				
Selitbloc LVT Underlayment	Underlayment for entire room with carpet and LVT system				
GlasBac	Carpet Tile Backing				

GUESTROOM INSTALLATION PLAN

All quantities are estimates only and are based on plans provided. Site measurements and field verifications are recommended to ensure accuracy. These quantities are not intended to be used for material ordering purposes. Since waste factors may vary by installer, actual ordering quantities are the responsibility of your flooring contractor.



LEGEND

A	
	<p>PRODUCT: RMS 507 COLOR: 187632 SIZE: 25cm x 1m INSTALLED: ASHLAR</p>
B	
	<p>PRODUCT: TEXTURED WOODGRAINS COLOR: A00405 GREY DUNE SIZE: 25cm x 1m INSTALLED: ASHLAR</p>

Balance Scheme Version 1.0 Meeting Room Prototype Order Information

FOR PRICING CONTACT: Morre McCollum morre.mccollum@interface.com

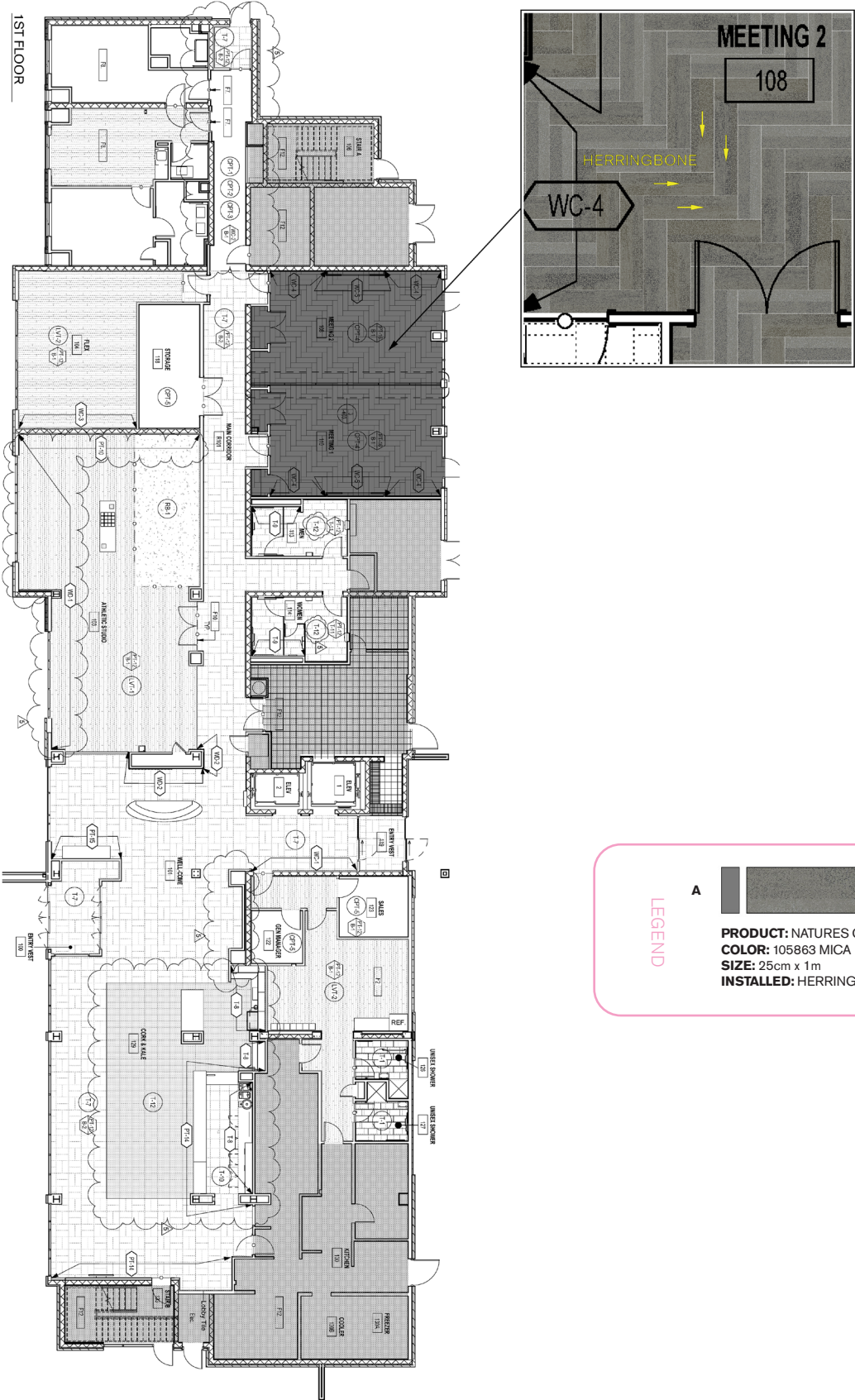
FOR ORDER ENTRY / SHIPPING CONTACT: Customer Service 1.800.634.6032 CustomerSuccess-Hospitality@interface.com



Meeting Room Products	IHG Sample #	Color #	Size	Installation
Natures Course A	EP-CPT-05	105863 Mica	25cm x 1m	Herringbone
Installation Specifications	Description			
XL2000 PLUS	Adhesive			
GlasBac	Carpet Tile Backing			

MEETING ROOM INSTALLATION PLAN

All quantities are estimates only and are based on plans provided. Site measurements and field verifications are recommended to ensure accuracy. These quantities are not intended to be used for material ordering purposes. Since waste factors may vary by installer, actual ordering quantities are the responsibility of your flooring contractor.



Balance Scheme Version 1.0 Office Prototype Order Information

FOR PRICING CONTACT: Morre McCollum morre.mccollum@interface.com

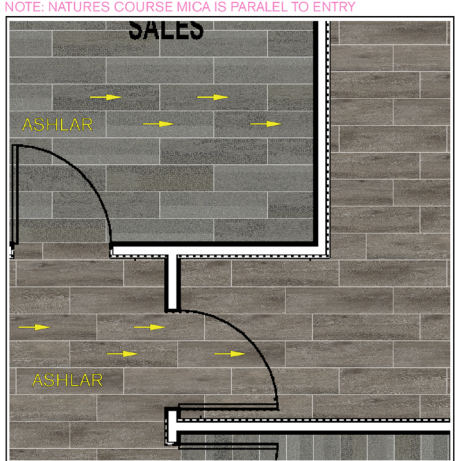
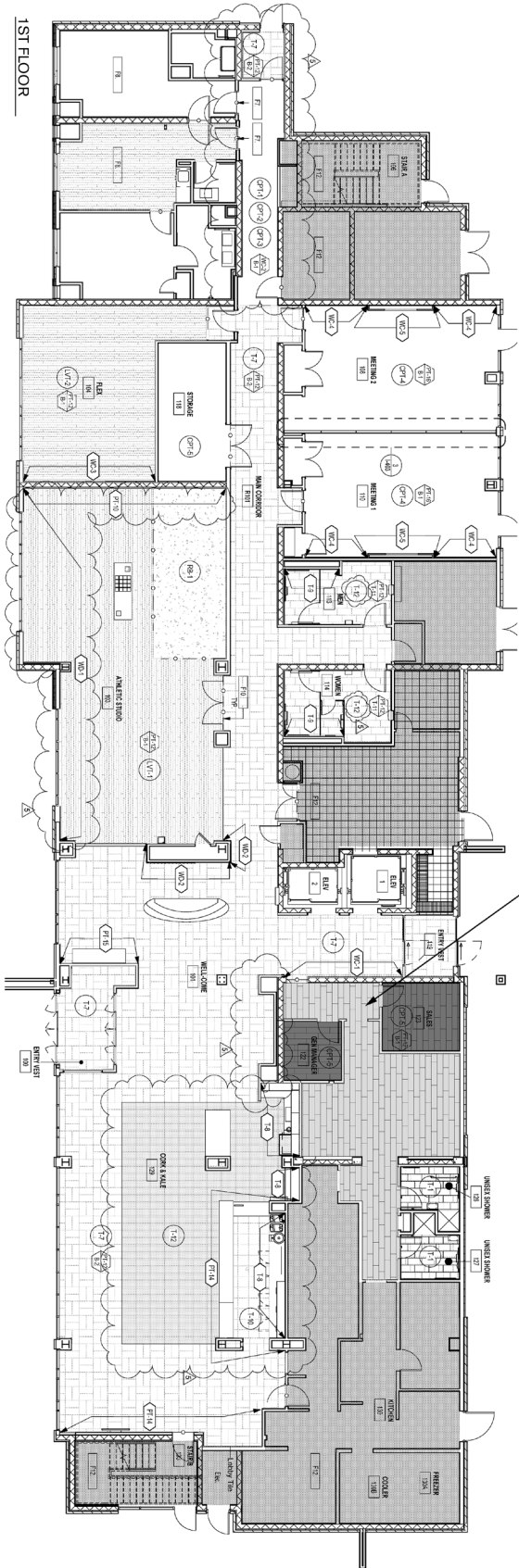
FOR ORDER ENTRY / SHIPPING CONTACT: Customer Service 1.800.634.6032 CustomerSuccess-Hospitality@interface.com



Office Product	IHG Sample #	Color #	Size	Installation
Natures Course A	EP-CPT-05	105863 Mica	25cm x 1m	Ashlar
Textured Woodgrains B	EP-LVT-01	A00405 Grey Dune	25cm x 1m	Ashlar
Installation Specifications	Description	Note		
XL2000 PLUS	Adhesive			
Selitbloc LVT Underlayment	Underlayment for LVT	No underlayment needed if the office is on the 1st Floor		
GlasBac	Carpet Tile Backing			

OFFICE INSTALLATION PLAN

All quantities are estimates only and are based on plans provided. Site measurements and field verifications are recommended to ensure accuracy. These quantities are not intended to be used for material ordering purposes. Since waste factors may vary by installer, actual ordering quantities are the responsibility of your flooring contractor.



LEGEND

A	
	PRODUCT: NATURES COURSE COLOR: 105863 MICA SIZE: 25cm x 1m INSTALLED: ASHLAR
B	
	PRODUCT: TEXTURED WOODGRAINS COLOR: A00405 GREY DUNE SIZE: 25cm x 1m INSTALLED: ASHLAR

Formula Blue Prototype Order Information

FOR PRICING CONTACT: Morre McCollum morre.mccollum@interface.com

FOR ORDER ENTRY / SHIPPING CONTACT: Customer Service 1.800.634.6032 CustomerSuccess-Hospitality@interface.com



Carpet tile saves up to approximately 33% in product waste verses broadloom, based on prototype layout.

Corridor Products	IHG Spec #	Color #	Size	Installation	Description
Custom Walk The Plank A	EXP-CPT4.1	183176	25cm x 1m	Ashlar	Field Carpet
Custom Walk The Plank B	EXP-CPT5.1	182384	25cm x 1m	Ashlar	Accent Carpet
Monochrome	EXP-B73	101837 Granite	6" Carpet Base		Corridor Carpet Base
Installation Specifications	Description				
2000 Plus	Adhesive				
CushionBac Renew	Pad				

Formula Blue Prototype Order Information

FOR PRICING CONTACT: Morre McCollum morre.mccollum@interface.com

FOR ORDER ENTRY / SHIPPING CONTACT: Customer Service 1.800.634.6032 CustomerSuccess-Hospitality@interface.com



Lobby, Reception, & Meeting Rm. Products	IHG Spec #	Color #	Size	Installation	Description
SL930 A	EXP-CPT1.6	104522 Navy Fade	25cm x 1m	Ashlar	Field Carpet
Installation Specifications	Description				
2000 Plus	Adhesive				
CushionBac Renew	Pad				

Formula Blue Prototype Order Information

FOR PRICING CONTACT: Morre McCollum morre.mccollum@interface.com

FOR ORDER ENTRY / SHIPPING CONTACT: Customer Service 1.800.634.6032 CustomerSuccess-Hospitality@interface.com



Guest Room Products	IHG Spec #	Color #	Size	Installation	Description
Contemporary and Natural Schemes					
RMS 506 A	EXG-CPT1.1	182277	25cm x 1m	Ashlar	Field Carpet
Monochrome	EXG-B2.1	101803 Malt	4" Carpet Base		Guest Room Carpet Base
Installation Specifications	Description				
2000 Plus	Adhesive				
CushionBac Renew	Pad				

Formula Blue Prototype Order Information

FOR PRICING CONTACT: Morre McCollum morre.mccollum@interface.com

FOR ORDER ENTRY / SHIPPING CONTACT: Customer Service 1.800.634.6032 CustomerSuccess-Hospitality@interface.com



Guest Room Suites Products Contemporary Scheme	IHG Spec #	Color #	Size	Installation	Description
RMS 506 A	EXG-CPT1.1	182277	25cm x 1m	Ashlar	Field Carpet
3rd Avenue B	EXG-CPT2.C1	8180 Grand	50cm x 50cm	Brick	Rugs @ Suites
Monochrome	EXG-B2.1	101803 Malt	4" Carpet Base		Guest Room Carpet Base
Installation Specifications	Description				
2000 Plus	Adhesive				
CushionBac Renew	Pad				

Formula Blue Prototype Order Information

FOR PRICING CONTACT: Morre McCollum morre.mccollum@interface.com

FOR ORDER ENTRY / SHIPPING CONTACT: Customer Service 1.800.634.6032 CustomerSuccess-Hospitality@interface.com



Guest Room Suites Products	IHG Spec #	Color #	Size	Installation	Description
Natural Scheme					
Cambria A	EXG-CPT2-1NA	102560 Marsh	50cm x 50cm	Non Directional	Rugs @ Suites
On Line B	EXG-CPT2-1NB	103800 Mustard	25cm x 1m	Pattern By Tile	Rugs @ Suites
On Line C	EXG-CPT2-1NC	103788 Pepper	25cm x 1m	Pattern By Tile	Rugs @ Suites
On Line D	EXG-CPT2-1ND	103795 Ocean	25cm x 1m	Pattern By Tile	Rugs @ Suites
RMS 506 E	EXG-CPT1.1	182277	25cm x 1m	Ashlar	Field Carpet
Monochrome	EXG-B2.1	101803 Malt	4" Carpet Base		Guest Room Carpet Base
Installation Specifications	Description				
2000 Plus	Adhesive				
CushionBac Renew	Pad				