

Why Interface?

When you think of carpet tile, think of Interface.

By definition, we're the world's largest designer and maker of carpet tile. By reputation, we're a company of ideas and courage. Ray Anderson founded Interface in 1973 because he believed in the global potential of carpet tile. From mill to management, vision has always been the rule—not the exception.

Vision demands innovation. It's as vital to us as any other raw material in our industry. When we say 'yes' to the unexpected, we explore new paths to discovery. And discovery helps us provide our customers with new technologies, fresh aesthetics, and greater product performance.

Innovation is also at the heart of our Mission Zero® goal to eliminate any negative environmental impact by 2020. We're not just changing our products. We're changing our business. And that includes everything from re-engineering our products to redesigning our supply chain and engaging our customers to ultimately create a sustainable system.

There are many reasons to choose Interface but here are a few that set us apart.



i2® Modular Carpet Tile

Reduce Waste & Save Money.

By following principles of biomimicry, we created i2, a design platform featuring carpet tiles that vary from one to the other within each style and color. The result is tiles that blend together no matter when they are purchased or installed. And, our i2 non directional styles install with less waste – 1.5% for i2 non directional styles compared to an average waste factor of 14% for traditional roll carpet – so you save time and money.

Factors	Roll Carpet	i2 Non Directional Modular Carpet
Size of Facility (sq. ft.)	40,000	40,000
Carpeted Area 70% (sq. ft.)	28,000	28,000
Installation	14%	1.5%
Waste		
Total Waste (sq. ft.)	3,920	420
Total Waste (sq. yd.)	436	47
Total Waste Cost*	\$8,720	\$940
Total Material Cost Savings of \$7,780		



ReEntry® 2.0

Recyclable is Now a Reality.

Our ReEntry 2.0 program uses innovative technology that gives us the ability to cleanly separate the face fiber and backing of nearly any carpet type. Separated Type 6 and 6,6 nylon are recycled into new 6 and 6,6 nylon, while separated GlasBac® and similar competitor backings are recycled into new non-virgin PVC backing using our Cool Blue™ technology.

The result? Products designed and manufactured with a full color spectrum of post-consumer content fiber and our post-consumer content backing - GlasBacRE. Styles with our 100% recycled content Type 6 nylon feature up to 81% total recycled content, including as much as 29% post-consumer, dramatically reducing our use of virgin resources and moving us closer every day to a closed loop system.



We've reclaimed more than 250 million pounds of carpet since 1995.



We offer styles available in a full spectrum of stunning colors never thought possible in post-consumer content carpet.



TacTiles®

No Glue Installation.
 Our revolutionary TacTiles installation system eliminates the need for glue, adhering tiles securely together to form a floor that “floats” for greater flexibility, easier replacement and long-term performance. With more than 20 million square yards installed, TacTiles connectors have proven to create less mess, less waste and offer greater savings, not to mention an environmental footprint that is over 90% lower than that of traditional glue adhesives.



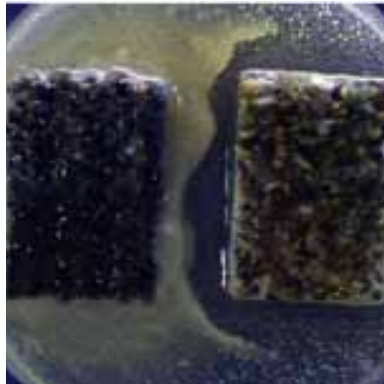
TacTiles create efficient, durable installations, while emitting virtually no VOCs so you have more flexibility.



Intersept®

Mold Protection.
 Our patented antimicrobial preservative, Intersept, protects our modular carpet against mold growth and odors – guaranteed. Intersept treated carpet shows no mold or bacterial growth when tested per the ASTM E2471 Standard Test Method.

Intersept is low in toxicity and contains no arsenic, heavy metals, phenols or formaldehyde.

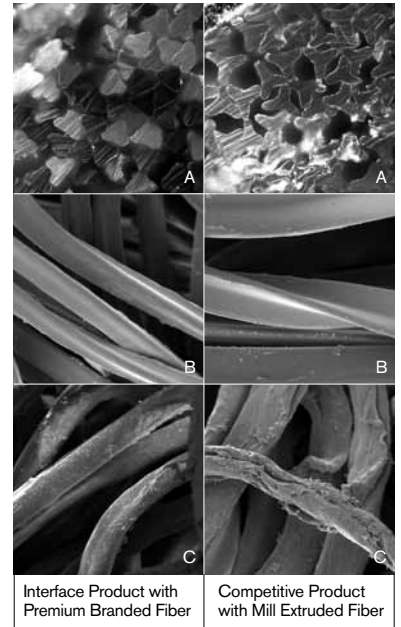


Interface carpet on the right has Intersept. Commonly used competitive carpet on the left does not. Mold growth is inhibited in the Interface sample.



ART

Long Term Appearance Retention.
 We go beyond standard wear testing with our proprietary ART – Appearance Retention Test. ART is the only appearance retention test to simulate soiling, wear and routine maintenance for 1 year, 5 years, 10 years or more. We won't launch a product that doesn't pass our rigid ART standards, so you can be assured that modular carpet purchased from Interface will look good on the floor for years to come.



A. Fiber Cross Section; B. Length of fiber in control sample viewed through an electron scanning microscope; C. Length of fiber viewed after testing with a 10 year wet and dry ART

Zeroing in on Our Goal

Our commitment to sustainability extends into all aspects of our business and evolved into our Mission Zero goal of eliminating any environmental impacts by 2020. Reducing our footprint has included everything from accelerating green building momentum to increasing use of recycled materials. Here's a snapshot of our progress so far:

*Stats show results for Interface Americas manufacturing facilities in Troup County, GA from 1996 through 2011.



Energy use per unit down
36%



Renewable energy use
44%



Greenhouse gas emissions per unit down
37%



Waste to landfill per unit down
89%



Water use per unit down
92%



Recycled/biobased raw materials use
48%

Third Party Certifications/Verifications

cool carpet™

Cool Carpet – ALL Interface modular carpet sold in North America is third party verified climate neutral Cool Carpet. Cool Carpet zeros out all greenhouse gas (GHG) emissions associated with the entire lifecycle of your carpet. And climate neutral verified Cool Carpet may be eligible for a USGBC LEED Innovation Credit.



Environmental Product Declaration (EPD) – Interface was the industry's first to earn an EPD (statement of product ingredients and environmental impacts over the entire lifecycle of a product) and we now have EPDs for four product categories covering more than 90% of our products. A comprehensive lifecycle assessment (LCA) is performed to ISO standards to develop an EPD, after which both the EPD and LCA must be third party verified.



Sustainable Carpet Assessment Standard (SCAS) – All Interface products with GlasBacRE backing meet the Platinum level of NSF/ANSI 140, the only carpet sustainability standard in North America that evaluates the environmental impact of carpet for its entire lifecycle. GlasBac or NexStep® backed products meet the Gold level and all may contribute toward a USGBC LEED Innovation Credit.



CRI Green Label Plus – All Interface carpet tile products meet CRI Green Label Plus, an independent testing program that identifies carpet and adhesives with very low emissions of VOCs to help improve indoor air quality.



RECYCLED
Paper made from
recycled material
FSC® C009723



PLEASE RECYCLE

www.interface.com

United States Headquarters

1503 Orchard Hill Road
LaGrange, GA 30240
1.800.336.0225 ext.6511

Canadian Headquarters

233 Lahr Drive
Belleville, ON K8N 5S2
1.800.267.2149 ext.2128

Latin American Headquarters

Edifício Igarassu
Rua Surubim, 577 - Conjuntos
73/74 7º Andar
04571-050 - São Paulo - SP
+ 55 11 2196 0900

CIM# IFS00402 09/2012



Mission Zero:

our promise to eliminate any
negative impact our company
may have on the environment
by the year 2020.